

Bark River at Nixon Park

Road Salt Monitoring Data Summary November 2012- July 2014¹



Photo by Jim Beecher

Volunteer: Jayne Jenks

Specific conductance summary:

- 32 measurements taken
- Minimum: 500 $\mu\text{S}/\text{cm}$ on 1/30/2013
- Maximum: 1780 $\mu\text{S}/\text{cm}$ on 2/20/2014
- Mean: 964 $\mu\text{S}/\text{cm}$

Chloride (Cl^-) summary:

- No samples collected

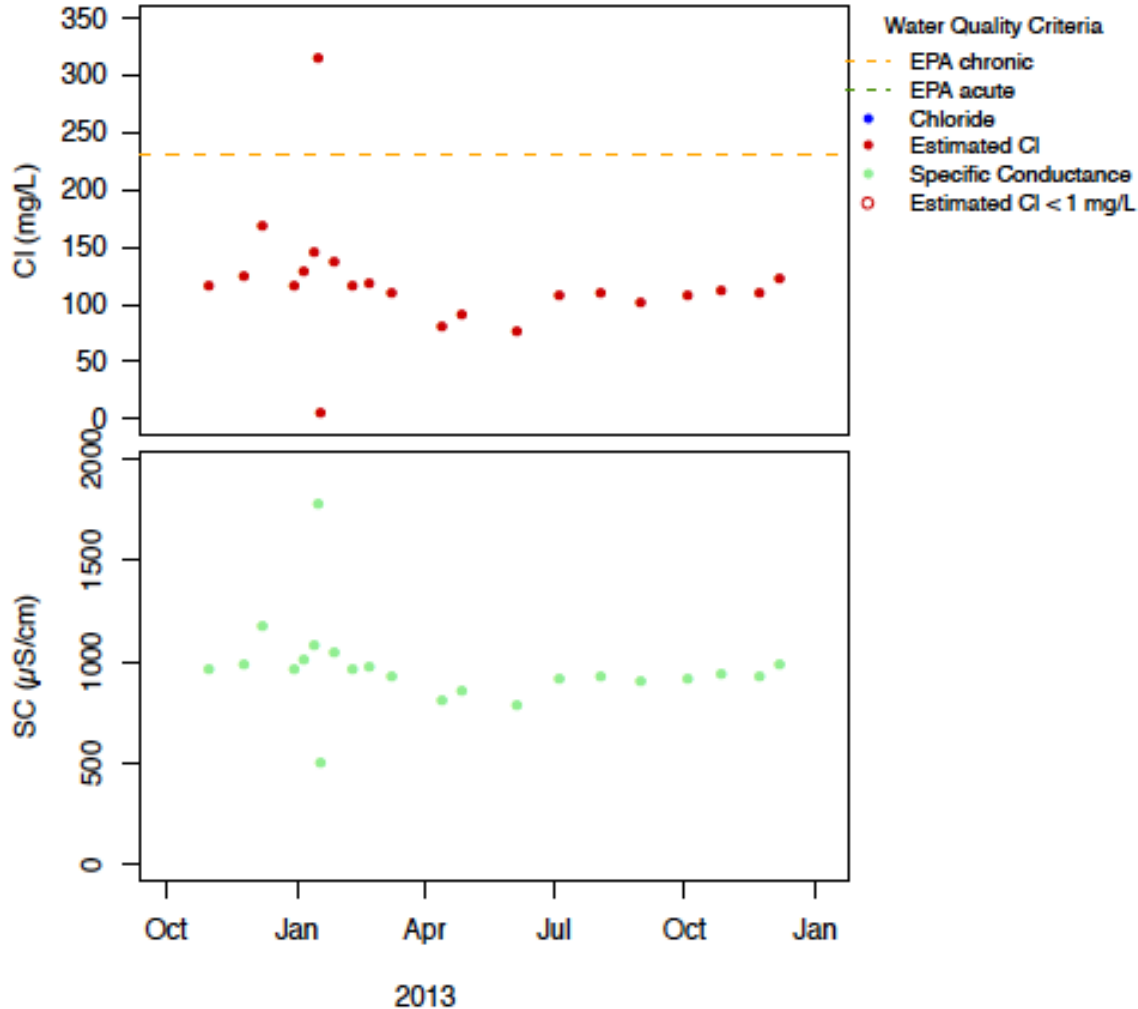
EPA Acute and Chronic Exceedences for Chloride²:

The EPA acute chloride standard of 860 mg/L was not exceeded at this site.

The EPA chronic chloride standard of 230 mg/L was exceeded once at this site.

- 316 mg/L on 1/28/2013 (calculated)

Results Through December 2013³:



¹ All data in SWIMS as of 8/26/2014 were downloaded

² Source: EPA. 1988. Ambient Water Quality Criteria for Chloride. EPA 440/6-88-001.

³ Calculated chloride: $\text{Cl} = 0.242 * \text{SC} - 115.2$, $\text{adjR}^2 = 0.8$, except when $\text{SC} > 2250$, then $\text{Cl} = 0.346 * \text{SC} - 309.8$, $\text{adjR}^2 = 0.97$