

# Pewaukee Lake Outfall

## Road Salt Monitoring Data Summary November 2012- July 2014<sup>1</sup>



Photo by Jim Beecher

**Volunteer:** Jayne Jenks

### Specific conductance summary:

- 30 measurements taken
- Minimum: 730  $\mu\text{S}/\text{cm}$  on 3/31/2014
- Maximum: 1170  $\mu\text{S}/\text{cm}$  on 2/20/2014
- Mean: 916  $\mu\text{S}/\text{cm}$

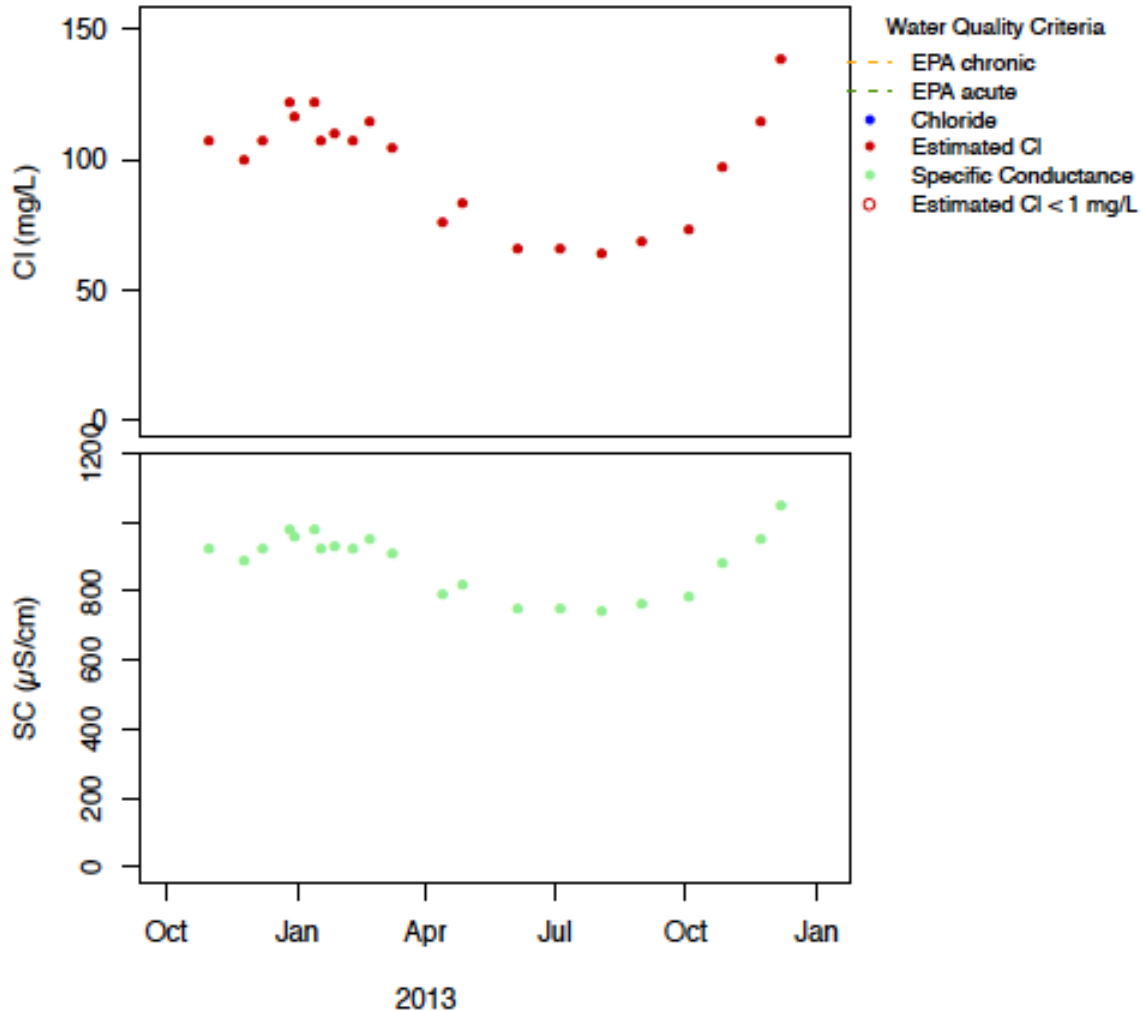
### Chloride ( $\text{Cl}^-$ ) summary:

- No samples collected

### EPA Acute and Chronic Exceedences for Chloride<sup>2</sup>:

Neither the EPA acute chloride standard of 860 mg/L nor EPA chronic chloride standard of 230 mg/L have been exceeded at this site.

### Results Through December 2013<sup>3</sup>:



<sup>1</sup> All data in SWIMS as of 8/26/2014 were downloaded

<sup>2</sup> Source: EPA. 1988. Ambient Water Quality Criteria for Chloride. EPA 440/6-88-001.

<sup>3</sup> Calculated chloride:  $\text{Cl} = 0.242 * \text{SC} - 115.2$ ,  $\text{adjR}^2 = 0.8$ , except when  $\text{SC} > 2250$ , then  $\text{Cl} = 0.346 * \text{SC} - 309.8$ ,  $\text{adjR}^2 = 0.97$