

CONSOLIDATED WATER POWER COMPANY

General Offices
P.O. Box 8050, Wisconsin Rapids, WI 54495-8050
A subsidiary of NewPage Corporation

November 11, 2011

Secretary
Federal Energy Regulatory Commission
888 1st Street, N.E.
Washington, D.C. 20426

(VIA ELECTRONIC FILING)

Stevens Point Hydroelectric Project, FERC No. 2110 – Article 405, Exotic Species Biennial Monitoring Report – 2010/2011

Dear Secretary:

In accordance with the order approving the Exotic Species Control Plan, Consolidated Water Power Company (CWPCo) is filing the monitoring report for 2010/2011.

CWPCo conducted monitoring during the summers of 2010 and 2011 on the Project. Inspections were completed by vehicle and boat (where necessary). No observances of Eurasian milfoil or curly-leaf pondweed were noted.

Purple Loosestrife was observed sporadically. Administered purple loosestrife control methods were:

1. For smaller colonies (less than 5 plants) without observed beetle activity – removed plants to best extent possible and disposed of.
2. For colonies with observed beetle activity – either
 - a. removed flower tops, leaving rest of plant for beetles to feed on and populate.
 - b. removed flower tops, leaving rest of plant for beetles to feed on and populate, plus place Wood County Conservation raised beetle pots below Stevens Point Dam spillway on river's west shoreline during 2011.

Two new purple loosestrife site locations were located in 2010 and added to the six locations referenced in the 2008/2009 monitoring report. Both new sites were small colonies of less than 5 plants, of which one was observed with no plants in 2011. Overall, the purple loosestrife plant counts were similar to the 2008/2009 counts, with many sites observed with beetle activity. The purple loosestrife levels do not demonstrate any significant negative effects to fish or wildlife populations.

Information about invasive species is provided along with the distribution of our recreational brochures which are free to the public.

CWPCo operating and maintenance personnel informally monitor for the presence of zebra mussels during the course of their normal work duties. No zebra mussel observations were reported in 2010 or 2011.

Sincerely,

CONSOLIDATED WATER POWER COMPANY

Thomas J. Witt

Thomas J. Witt
Resources Manager

cc: File (Stevens Point, LG-90-30, Article 405)

Mr. Scott Watson, Wisconsin Department of Natural Resources, Wausau, WI (paper)

Ms. Cheryl Laatsch, Wisconsin Department of Natural Resources, Madison, WI (paper)

Mr. Nick Utrup, U.S. Fish & Wildlife Service, Green Bay, WI (paper)

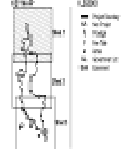
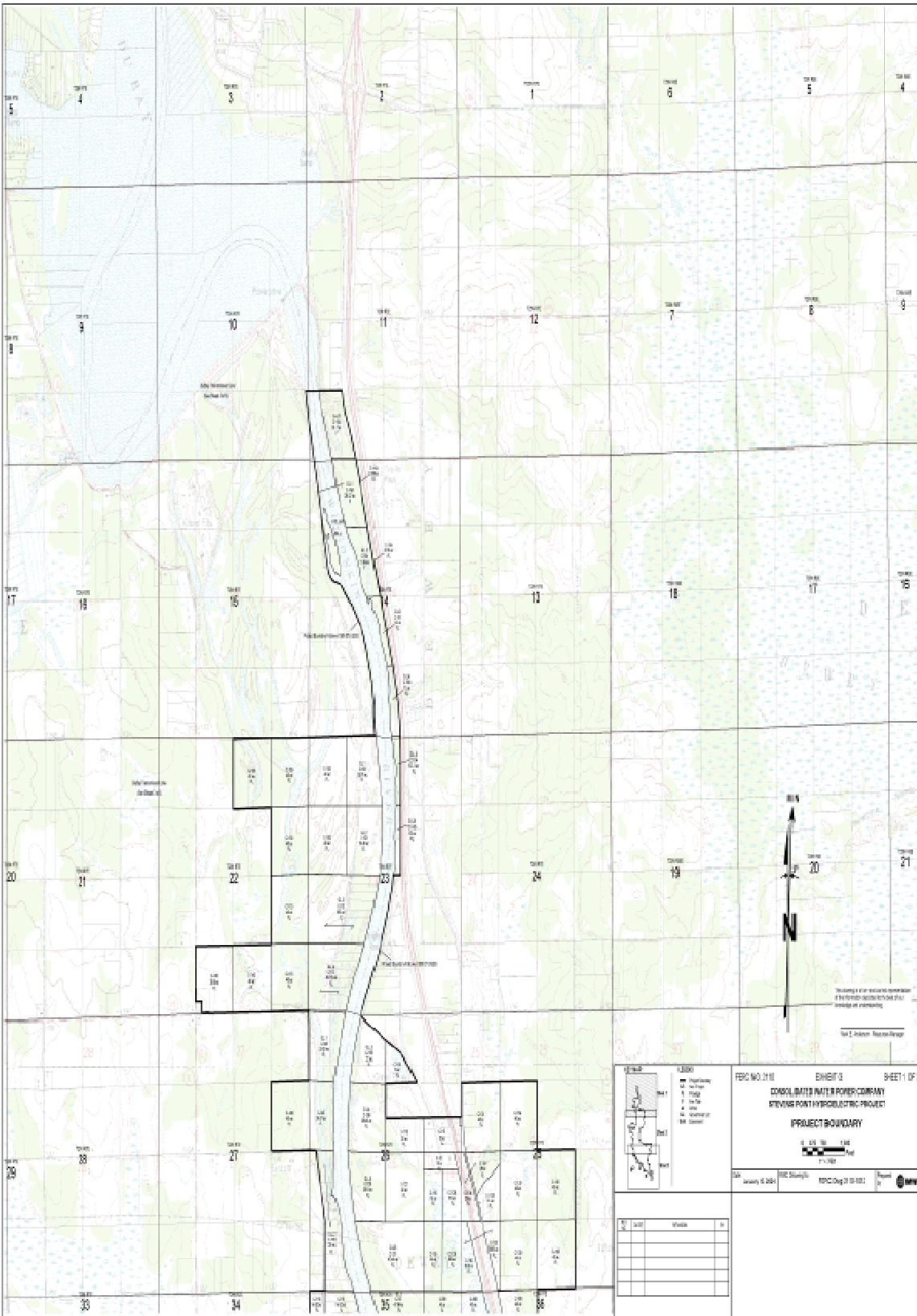
Purple Loosestrife Monitoring Data - 2010 and 2011

Table 1 – Purple Loosestrife Monitoring Site Data

Stevens Point Hydroelectric Project – Purple Loosestrife Monitoring for 2010 / 2011

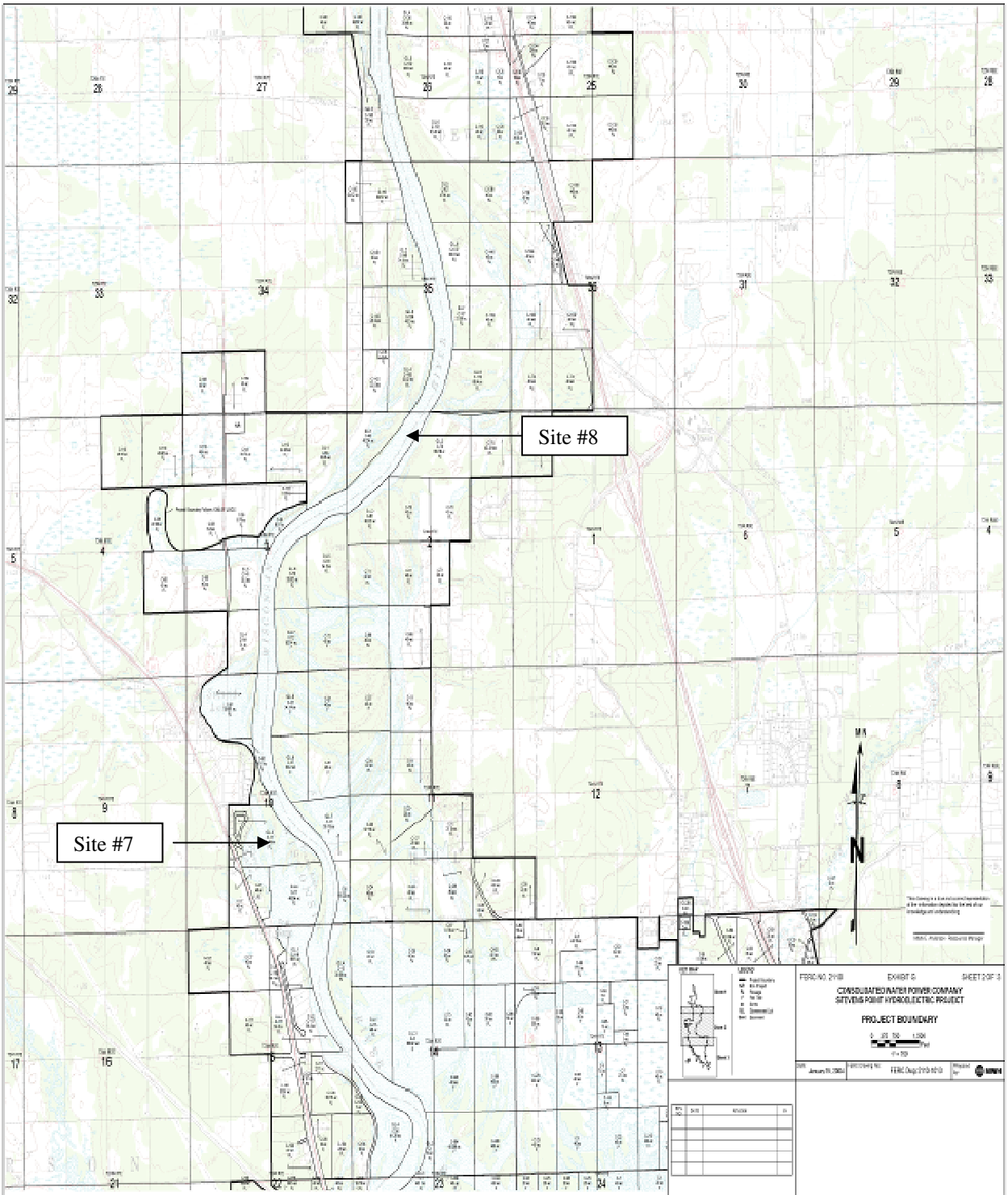
Site No	Description	GPS Coordinates	Plt Density	Beetle Activity	Chem Applied	Action Taken
1	Small island In center of main reservoir	16T 0291958 4935997	5 plts	Heavy	No	2010 – removed flower tops, rest for beetles 2011 - removed flower tops, rest for beetles
			3 plts	Heavy	No	
2	Small island NW of main reservoir near main channel	16T 0290637 4936278	15 plts	Heavy	No	2010 – removed flower tops, rest for beetles 2011 - removed flower tops, rest for beetles
			12 plts	Heavy	No	
3	Sand bar south of Site #2	16T 0290469 4935927	12 plts	Heavy	No	2010 – removed flower tops, rest for beetles 2011 - removed flower tops, rest for beetles
			9 plts	Heavy	No	
4	W. shoreline of main channel	16T 0289899 4937064	2 plts	None	No	2010 - removed plants
			None		No	2011 - no plants
5	Small island along W. shoreline & main channel	16T 0289548 4937742	30 plts	Heavy	No	2010 – removed flower tops, rest for beetles 2011 - removed flower tops, rest for beetles
			20 plts	Heavy	No	
6	Bedrock below spillway W. side	16T 0294296 4932408	30 plts	Light	No	2010 - removed flower tops, rest for beetles 2011 - removed flower tops, rest for beetles, 2 pots planted
			25 plts	Light	No	
7	Small island across from old STH 10 recreation site (CTH HH)	16T 0289053 4938540	4 plts	Medium	No	2010 – removed flower tops, rest for beetles 2011 - removed flower tops, rest for beetles
			2 plts	Medium	No	
8	E. shoreline, 0.5 miles downstream new STH 10 recreation site	16T 0289766 4941127	1 plts	None	No	2010 – removed plant
			None			2011 – no plants

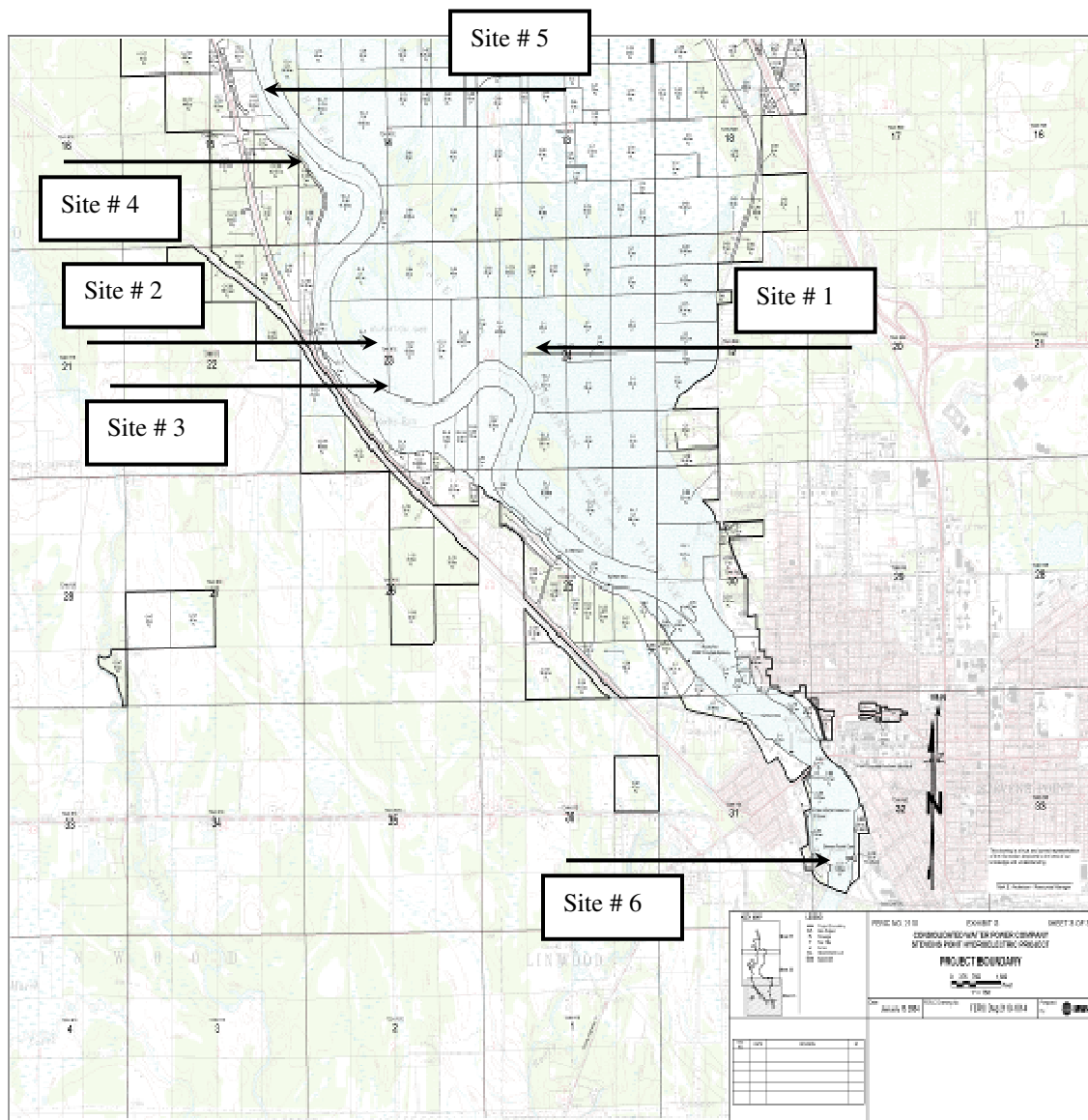
Notes: No chemical applications for 2010 or 2011. Beetle activity rating based on percentage of leaves with bee-holes from beetle feeding: light less than 15%, medium 15% to 30%, heavy greater than 30%.



FERC NO. 0116 SHEET 3 OF 3
CONSOLIDATED WATER POWER COMPANY
STEVENS POINT HYDROELECTRIC PROJECT
PROJECT BOUNDARY
 1:50,000
 Date: January 12, 2011
 Project No.: FERC Docket # 11-1021
 Prepared by:

NO.	DATE	REVISIONS	BY





Document Content(s)

StPt2011Report.PDF.....1-6