

CONSOLIDATED WATER POWER COMPANY

General Offices
P.O. Box 8050, Wisconsin Rapids, WI 54495-8050
A subsidiary of NewPage Corporation

October 23, 2013

Secretary
Federal Energy Regulatory Commission
888 1st Street, N.E.
Washington, D.C. 20426

(VIA ELECTRONIC FILING)

Stevens Point Hydroelectric Project, FERC No. 2110 – Article 405, Exotic Species Biennial Monitoring Report – 2012/2013

Dear Secretary:

In accordance with the order approving the Exotic Species Control Plan, Consolidated Water Power Company (CWPCo) is filing the biennial monitoring report for 2012/2013.

CWPCo conducted monitoring during the summers of 2012 (vehicle August 6th week and boat August 13th week) and 2013 (boat July 30th and vehicle August 5th week) on the Project. One observance for Eurasian milfoil was located in the 1st Lake area (site #10, 16T 0288814, 4938947 coordinates). No observances for curly-leaf pondweed were reported.

Purple Loosestrife was observed sporadically. Administered purple loosestrife control methods were:

1. For smaller colonies (less than 5 plants) without observed beetle activity – removed plants to best extent possible and disposed of.
2. For colonies ranging from 6 – 50 plants with observed beetle activity – either
 - a. removed flower tops, leaving rest of plant for beetles to feed on and populate.
 - b. removed flower tops, leaving rest of plant for beetles to feed on and populate, and placed Wood County Conservation raised beetle pots (3 total) below Stevens Point Dam spillway (site #6) on Wisconsin River's west shoreline during 2013.

The 2010 baseline 8 sites trended lower over the past four years, with 6 sites no longer observed with purple loosestrife. Four new purple loosestrife site locations were reported during 2012/13 biennial period, bringing to 12 the total observation sites. The new sites were observed with plant counts ranging from 3 to 40. Three of the new sites have beetle activity, with two of the sites observed with lower counts in 2013 than 2012.

Summary

Overall, the total project purple loosestrife plant counts were similar or trending lower when compared to 2010. The observed 2013 year counts generally were lower than the previous three years. A majority of the observed sites have evidence of beetle activity. The beetle activity is a positive sign in aiding the control of the exotic species. Current purple loosestrife levels do not demonstrate any significant negative effects towards fish or wildlife populations with the Project.

CWPCo continues to provide information about invasive species (PUBL-WM-250-95) with the distribution of our recreational brochures. The brochures are free to the public.

CWPCo operating and maintenance personnel informally monitor for the presence of zebra mussels during the course of their normal work duties. No zebra mussel observations were reported in 2012 or 2013.

Sincerely,

CONSOLIDATED WATER POWER COMPANY

Thomas J. Witt

Thomas J. Witt
Resources Manager

cc: File (Stevens Point, LG-90-30, Article 405)

Ms. Cheryl Laatsch, Wisconsin Department of Natural Resources, Madison, WI (paper)

Mr. Nick Utrup, U.S. Fish & Wildlife Service, Green Bay, WI (paper)

Purple Loosestrife Monitoring Data - Years 2010 to 2013

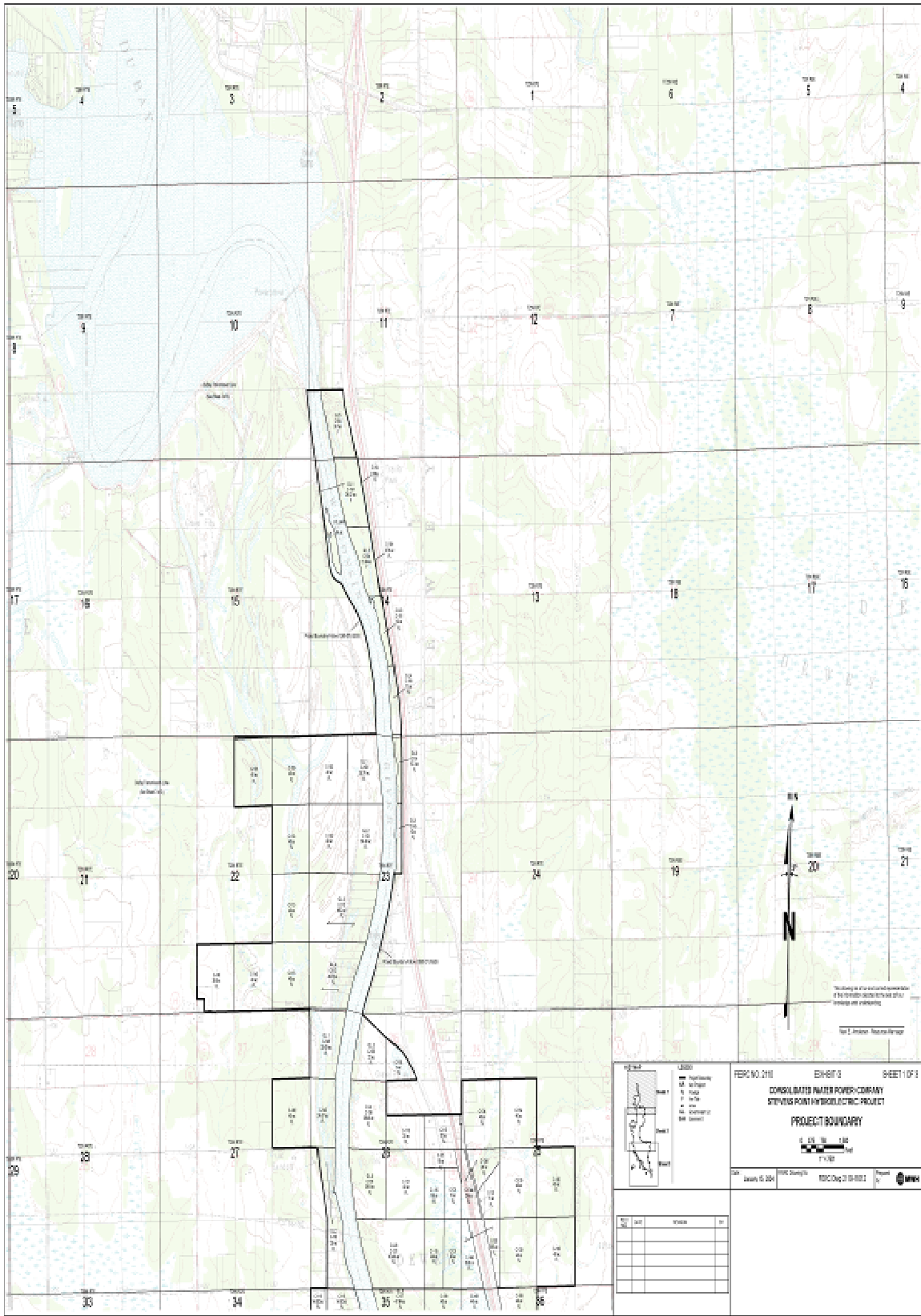
Table 1 – Purple Loosestrife Monitoring Site Data

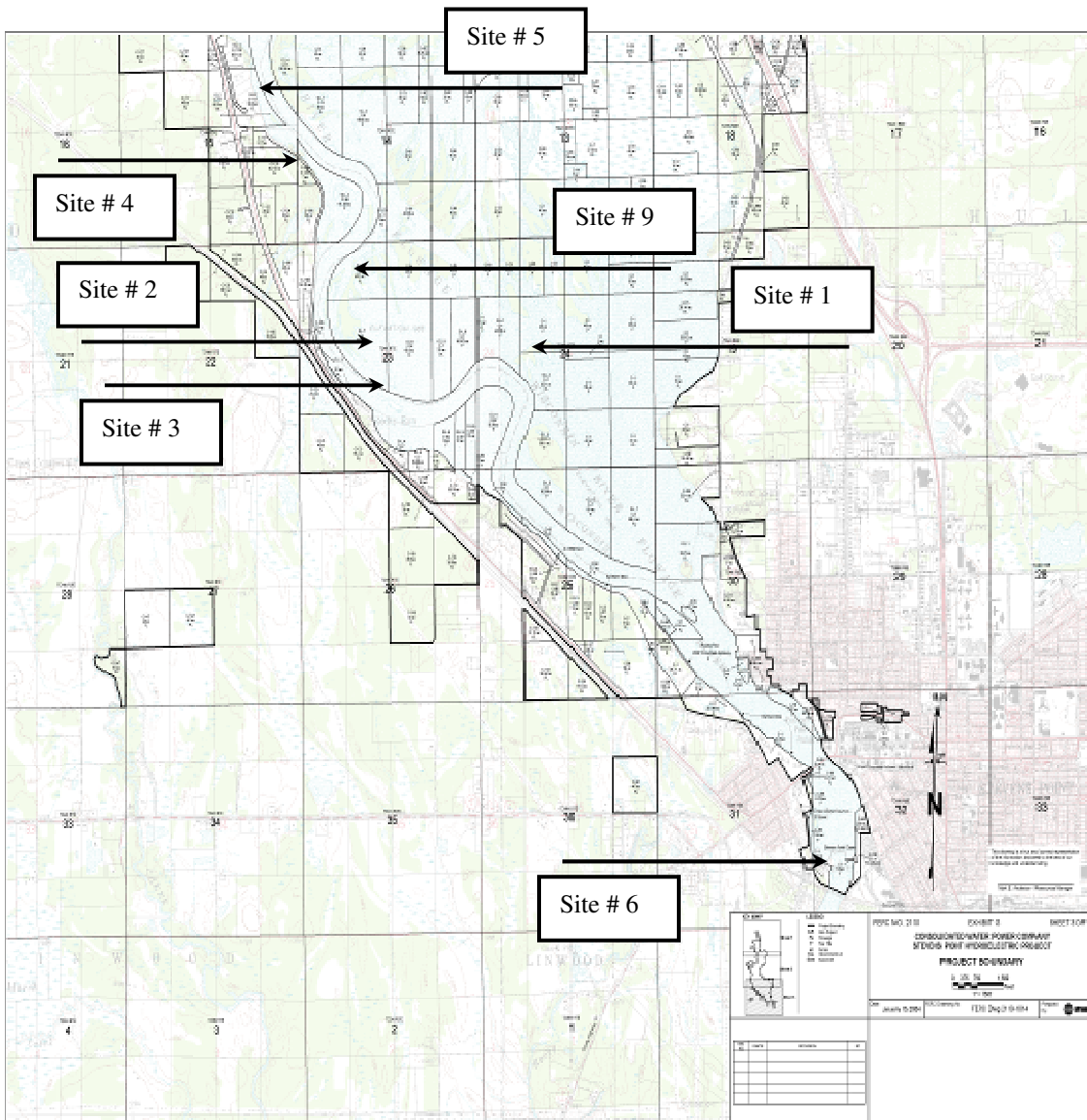
Stevens Point Hydroelectric Project – Purple Loosestrife Monitoring 2010 to 2013

Site No	Description	GPS Coordinates	Plt Density	Beetle Activity	Chem Applied	Action Taken
1	Small island In center of main reservoir	16T 0291958 4935997	5 plts	Heavy	No	2010 – removed flower tops, rest for beetles 2011 - removed flower tops, rest for beetles 2012 – no plants 2013 – no plants
			3 plts	Heavy	No	
			None			
			None			
2	Small island NW of main reservoir near main channel	16T 0290637 4936278	15 plts	Heavy	No	2010 – removed flower tops, rest for beetles 2011 - removed flower tops, rest for beetles 2012 - removed flower tops, rest for beetles 2013 – no plants
			12 plts	Heavy	No	
			8 plts	Heavy	No	
			None			
3	Sand bar south of Site #2	16T 0290469 4935927	12 plts	Heavy	No	2010 – removed flower tops, rest for beetles 2011 - removed flower tops, rest for beetles 2012 - removed flower tops, rest for beetles 2013 – no plants
			9 plts	Heavy	No	
			6 plts	Heavy	No	
			None			
4	W. shoreline of main channel	16T 0289899 4937064	2 plts	None	No	2010 - removed plants 2011 - no plants 2012 - no plants 2013 - no plants
			None		No	
			None			
			None			
5	Small island along W. shoreline & main channel	16T 0289548 4937742	30 plts	Heavy	No	2010 – removed flower tops, rest for beetles 2011 - removed flower tops, rest for beetles 2012 – removed flower tops, rest for beetles 2013 - removed flower tops, rest for beetles
			20 plts	Heavy	No	
			13 plts	Heavy	No	
			3 plts	Heavy	No	
6	Bedrock below spillway W. side	16T 0294296 4932408	30 plts	Light	No	2010 - removed flower tops, rest for beetles 2011 - removed flower tops, rest for beetles, 2 pots planted 2012 - removed flower tops, rest for beetles 2013 - removed flower tops, rest for beetles, 3 pots planted
			25 plts	Light	No	
			40 plts	Light	No	
			25 plts	Light	No	

Site No	Description	GPS Coordinates	Plt Density	Beetle Activity	Chem Applied	Action Taken
7	Small island across from old STH 10 recreation site (CTH HH)	16T 0289053 4938540	4 plts 2 plts 1 plt None	Medium Medium Medium	No No No	2010 – removed flower tops, rest for beetles 2011 - removed flower tops, rest for beetles 2012 - removed flower tops, rest for beetles 2013 – no plants
8	E. shoreline, 0.5 miles downstream new STH 10 recreation site	16T 0289766 4941127	1 plt None None None	None	No	2010 – removed plant 2011 – no plants 2012 – no plants 2013 – no plants
9	Island East of Martin Island Drive (upstream end)	16T 0289682 4936131	2 plts	None		2013 – removed plants
10	1 st Lake area West shoreline	16T 0288814 4938947	10 plts 2 plts	Light Medium	No No	2012 - removed flower tops, rest for beetles 2013 – removed plants
11	2 nd Lake east finger on side channel	16T 0288027 4938866	40 plts 6 plts	Light Light	No No	2012 - removed flower tops, rest for beetles 2013 – removed flower tops, rest for beetles
12	West shore slough above 2 nd Lake	16T 0286386 4938784	3 plts	Heavy	No	2013 – removed flower tops, rest for beetles

Notes: No chemical applications for 2010 - 2013. Beetle activity rating based on percentage of leaves with bee-bee holes from beetle feeding: light less than 15%, medium 15% to 30%, heavy greater than 30%.





Document Content(s)

StPt2013Report.PDF.....1-7