



Upper Peninsula Power Company

(a subsidiary of Integrys Energy Group)

700 North Adams Street

P.O. Box 19001

Green Bay, WI 54307-9001

October 28, 2013

FERC Project # 1864

Mr. Steve Gilbert
Wisconsin Department of Natural Resources
8770 Highway J
Woodruff, WI 54568

Dear Mr. Gilbert:

2013 Noxious Plants Monitoring Survey Results - Bond Falls Hydroelectric FERC Project # 1864

Bond Falls Reservoir, Victoria Falls Reservoir and Lake Gogebic

As per the Federal Energy Regulatory Commission (FERC) Order Approving Noxious Plants Monitoring Plan, Upper Peninsula Power Company (UPPCO) is required to submit the results of the Eurasian water milfoil (EWM) and purple loosestrife monitoring surveys completed for the Bond Falls Hydroelectric Project (FERC Project No. 1864).

On March 5, 2013, FERC approved a stay on the completion of the purple loosestrife and Eurasian Water-milfoil (EWM) survey activities in 2013, as outlined in the Victoria Falls Spillway Improvement Project Environmental Review for the Vitoria Falls Reservoir. The Victoria Falls Spillway Improvement Project involved a drawdown and made access through the reservoir very difficult and unsafe. UPPCO will again complete a purple loosestrife and EWM survey in 2014.

Purple loosestrife and EWM surveys were completed on August 8, 2013 for the Bond Falls Reservoir. Lake Gogebic was completed between July and August, 2013. Purple Loosestrife was not identified on the Bond Falls Reservoir.

Purple was once again observed at Lake Gogebic. Four colonies were identified as being located within the project boundary. Five of the colonies reported as small colonies in 2012, were not observed in 2013. One colony was identified as medium (6-50 plants) and three colonies as large 50+ purple loosestrife plants.

In consultation with the Bond Falls Implementation Team (BFIT), UPPCO provided funding to the Lake Gogebic Improvement Association (LGIA) to control purple loosestrife on the reservoir. From July through August, the LGIA released thousands of beetles at the largest colony site and completed a hand pull and/or burn control on all other large and medium colonies. Control activities were completed on all colonies identified; however at one control activity was curtailed due to the presence of bald face hornets (*Dolichovespula maculata*).

Survey results show that control efforts are being successful. UPPCO will once again consult with the BFIT concerning control methods to be implemented in 2014. Appendix A includes a figure of the purple loosestrife colony locations and data sheet.

EWM transect locations were surveyed and a meander sample for EWM was completed at the Bond Falls Reservoir on August 8, 2013 and on Lake Gogebic August 8 and 9, 2013. The surveys did not indicate the presence of EWM at the Bond Falls Reservoir. Appendix B includes the 2013 EWM survey results for each reservoir.

Cisco Chain of Lakes

As per the Notice of Proposed Changes to the Bond Falls Hydroelectric Project Approved Nuisance Plant Control Plan provided to FERC on June 7, 2011, UPPCO is providing the purple loosestrife and EWM survey results for the Cisco Chain of Lakes.

Purple loosestrife surveys on the Cisco Chain of Lakes were completed from August 13 through August 15, 2013. No purple loosestrife was observed.

18 EWM transect sample surveys and a meandering survey was also completed from August 13 through 15, 2013 on the Cisco Chain of Lakes. EWM was identified at four transect locations. These transects were located in Clearwater, Thousand Island and Big Lake. The meandering boat sample also identified EWM stands in Clearwater Lake, outside of the transect location. The EWM transect and location figure and information sheet is included as Appendix C.

In addition, all EWM and purple loosestrife boat landing signage was identified in good condition at the three reservoirs.

Should you have any questions relative to this material, please do not hesitate to call me.

Sincerely,



James Nuthals
Environmental Services-
Natural Resource Management
(920) 433-1460

Enc.

cc: Mr. Phil Wirtanen, LGIA
Ms. Cheryl Laatsch, WDNR

Mr. Greg Wenzel, CCROA

APPENDIX A

LAKE GOGEBIC PURPLE LOOSESTRIFE SURVEY RESULTS



Lake Gogebic, MI **Purple Loosestrife Survey** **2013**

0 0.5 1 Miles

Date: 10/28/2013

Imagery: Bing Maps

- Project Boundary
- Beetle Release Site
- Purple Loosestrife**
 - 0-5 Plants
 - 6-50 Plants
 - >50 Plants
 - No Plants Found



APPENDIX B

BOND FALLS AND LAKE GOGEBIC EWM SURVEY RESULTS

Eurasian Milfoil Surveys				
Bond Falls Hydroelectric Project				
8-Aug-13				
Transect #	0 - 0.5 M	0.5 - 1.5 M	1.5 - 3.0 M	> 3.0 M
1A	0	0	N/A	N/A
1B	0	0	N/A	N/A
1C	0	0	N/A	N/A
2A	0	0	N/A	N/A
2B	0	0	N/A	N/A
2C	0	0	N/A	N/A
3A	0	0	N/A	N/A
3B	0	0	0	N/A
3C	0	0	0	0

Abundance Scale: 0-Absent, 1-Present, 2-Presence Less Than Half, 3-Equal Presence Compared to Other Species, 4-Dominant Species Present, 5-Total Infestation

[illegible]

BF AEM102

BF-AEM01

Lake Gogebic Eurasian Watermilfoil Survey – August 8 and 9, 2013

White Water Associates Field Staff: Caitlin Clarke and Angie Stine
Gogebic and Ontonagon Counties, Michigan

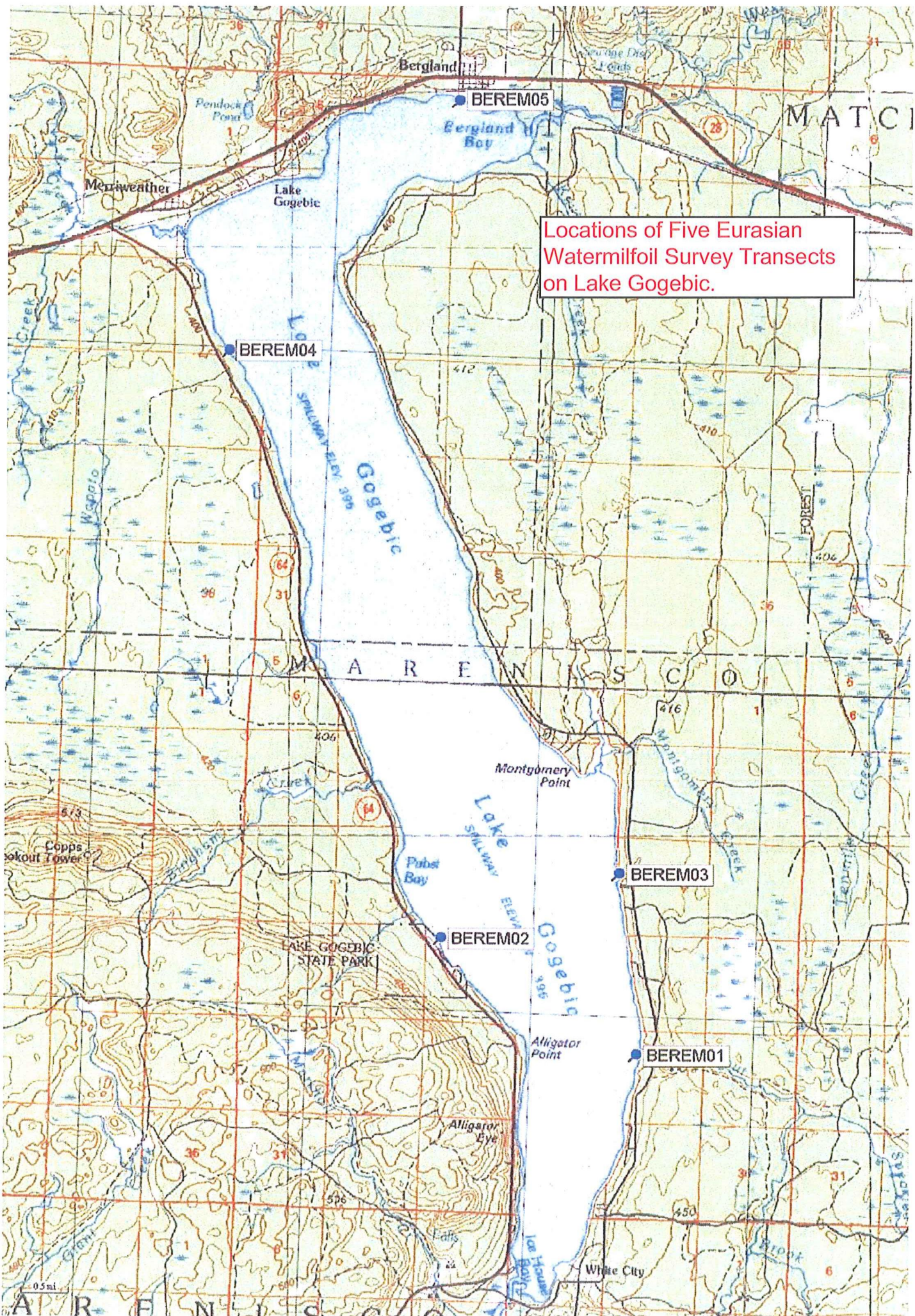


Transect #	0-0.5 m	0.5-1.5 m	1.5-3.0 m	>3.0 m	Origin	Notes
1A	0	0	NA	NA	N 46 26.642 W 89 31.587 (46.44403, -89.52645)	No aquatic plants observed. A few hundred feet south of Trout Brook. Substrate of rock and cobble.
1B	0	0	NA	NA		
1C	0	0	NA	NA		
2A	0	0	NA	NA	N 46 27.653 W 89 34.259 (46.46088, -89.57098)	No aquatic plants observed. In front of campsites. Substrate of rock and cobble.
2B	0	0	0	NA		
2C	0	0	0	0		
3A	0	0	NA	NA	N 46 28.294 W 89 31.883 46.47157, -89.53138)	No aquatic plants observed. South of boat landing a few hundred feet in small cove. Substrate of rock and cobble.
3B	0	0	0	NA		
3C	0	0	0	0		
4A	0	NA	NA	NA	N 46 32.964 W 89 37.401 (46.54940, -89.62335)	<i>Valisneria Americana</i> present. Thirty feet north of park with sand beach and boat launch. Substrate of sand and rock.
4B	0	0	NA	NA		
4C	0	0	0	0		
5A	0	NA	NA	NA	N 46 35.338 W 89 34.391 (46.58897, -89.57318)	<i>Valisneria Americana</i> and <i>Potamogeton richardsonii</i> present. Fifty feet west of Bergland boat launch on east side of large concrete pier. Substrate of sand and rock
5B	0	0	0	0		
5C	0	0	0	0		

NA: Not Applicable

Abundance Scale: 0-EWM absent, 1-EWM present, 2 –EWM presence less than half, 3-EWM equal presence compared to other species, 4-EWM dominant species present, 5-EWM total infestation.

Note: Transects are 40 ft long and proceed away from shore in a direction perpendicular to the shoreline



Locations of Five Eurasian Watermilfoil Survey Transects on Lake Gogebic.

APPENDIX C

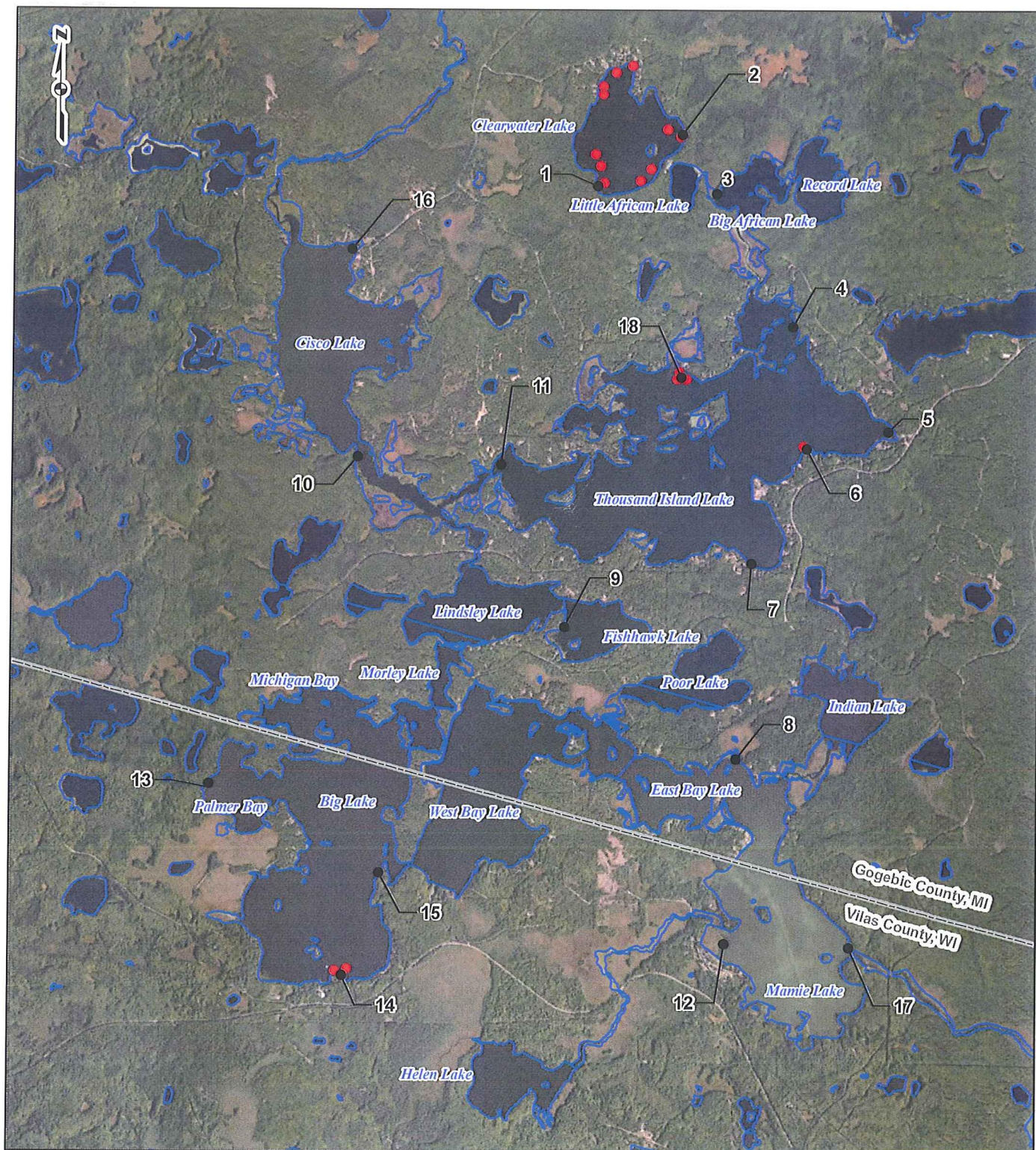
CISCO CHAIN OF LAKES EWM SURVEY RESULTS

Transect Number	Lake Name	Water Depth			
		0 to 0.5M	0.5 to 1.5 M	1.5 to 3.0M	>3.0M
1A	Clearwater	1	1	0	
1B		0	0	0	
1C		0	0	0	
2A	Clearwater	1	0	0	
2B		1	0	0	
2C		1	0	0	
3A	Little Africa	0	0	0	
3B		0	0	0	
3C		0	0	0	
4A	Thousand Island	0	0	0	
4B		0	0	0	
4C		0	0	0	
5A	Thousand Island	0	0	0	
5B		0	0	0	
5C		0	0	0	
6A	Thousand Island	0	0	1	
6B		0	0	0	
6C		0	0	0	
7A	Thousand Island	0	0	0	
7B		0	0	0	
7C		0	0	0	
8A	East Bay	0	0	0	
8B		0	0	0	
8C		0	0	0	
9A	Fishhawk	0	0	0	
9B		0	0	0	
9C		0	0	0	
10A	Cisco	0	0	0	
10B		0	0	0	
10C		0	0	0	
11A	Thousand Island	0	0	0	
11B		0	0	0	
11C		0	0	0	
12A	Mamie	0	0	0	
12B		0	0	0	
12C		0	0	0	
13A	Big	0	0	0	
13B		0	0	0	
13C		0	0	0	
14A	Big	0	0	0	
14B		0	0	1	
14C		1	0	1	
15A	Big	0	0	0	
15B		0	0	0	

15C		0	0	0
16A	Cisco	0	0	0
16B		0	0	0
16C		0	0	0
17A	Mamie	0	0	0
17B		0	0	0
17C		0	0	0
18A	Thousand Island	0	1	2
18B		0	1	3
18C		0	1	2

Note: Unless noted, transects did not have wtaer depths exceeding 3.0M

Transect #	Latitude	Longitude
sample point 1	46.252106471	-89.414724971
sample point 2	46.256196156	-89.404773238
sample point 3	46.251400006	-89.400714911
sample point 4	46.240653066	-89.391790277
sample point 5	46.232149284	-89.380641420
sample point 6	46.230804936	-89.390200492
sample point 7	46.221628911	-89.396644247
sample point 8	46.205868286	-89.398490294
sample point 9	46.216570189	-89.418580670
sample point 10	46.230340858	-89.442843391
sample point 11	46.229644946	-89.426024066
sample point 12	46.191006894	-89.399927998
sample point 13	46.204097121	-89.460250577
sample point 14	46.188634196	-89.444670732
sample point 15	46.196876891	-89.440311981
sample point 16	46.247096954	-89.443505187
sample point 17	46.190672194	-89.385270800
sample point 18	46.236631048	-89.404886087



PROJECT LOCATION



GOGEBIC COUNTY, MI &
VILAS COUNTY, WI

LEGEND

- Transect Location
- EWM Present
- Waterbody
- State Boundary

0 0.375 0.75 1.5
Miles

FIGURE 1 SURVEY LOCATION MAP

CISCO CHAIN EURASIAN
WATERMILFOIL SURVEY
INTEGRYS

DRAWN BY: TDB

DATE: 9/23/2013

CHECKED: DRB

APPROVED: DRB

WORLD IMAGERY, 2011, OBTAINED THROUGH ESRI WORLD IMAGERY, MICROSOFT CORPORATION, ACCESSED 09/2013; MCGI ROADS, MCD, HYDRO, 2010; WDNR HYDRO, 2009.