

JOHNSON CREEK

Jefferson County

September 28, 1976

Johnson Creek

Surface acres = 33.9, Length = 17.5 miles, Gradient = 5.1 feet per mile.

A long, low-gradient stream with an extensive system of ditched tributaries which originates near Watertown and joins the Rock River near Johnson Creek. Drainage is largely controlled by the pattern of north-south oriented swells (drumlins) and swales in this region, and as a result, the stream has a somewhat parallel drainage system. There are about 38 miles of unnamed tributaries, mostly ditched for drainage. Over 1,325 acres of wetland adjoin the stream.

Recommendations

From the Johnson Creek Treatment Plant discharge, and for the remainder of Johnson Creek, the classification should be continuous fish and aquatic life.

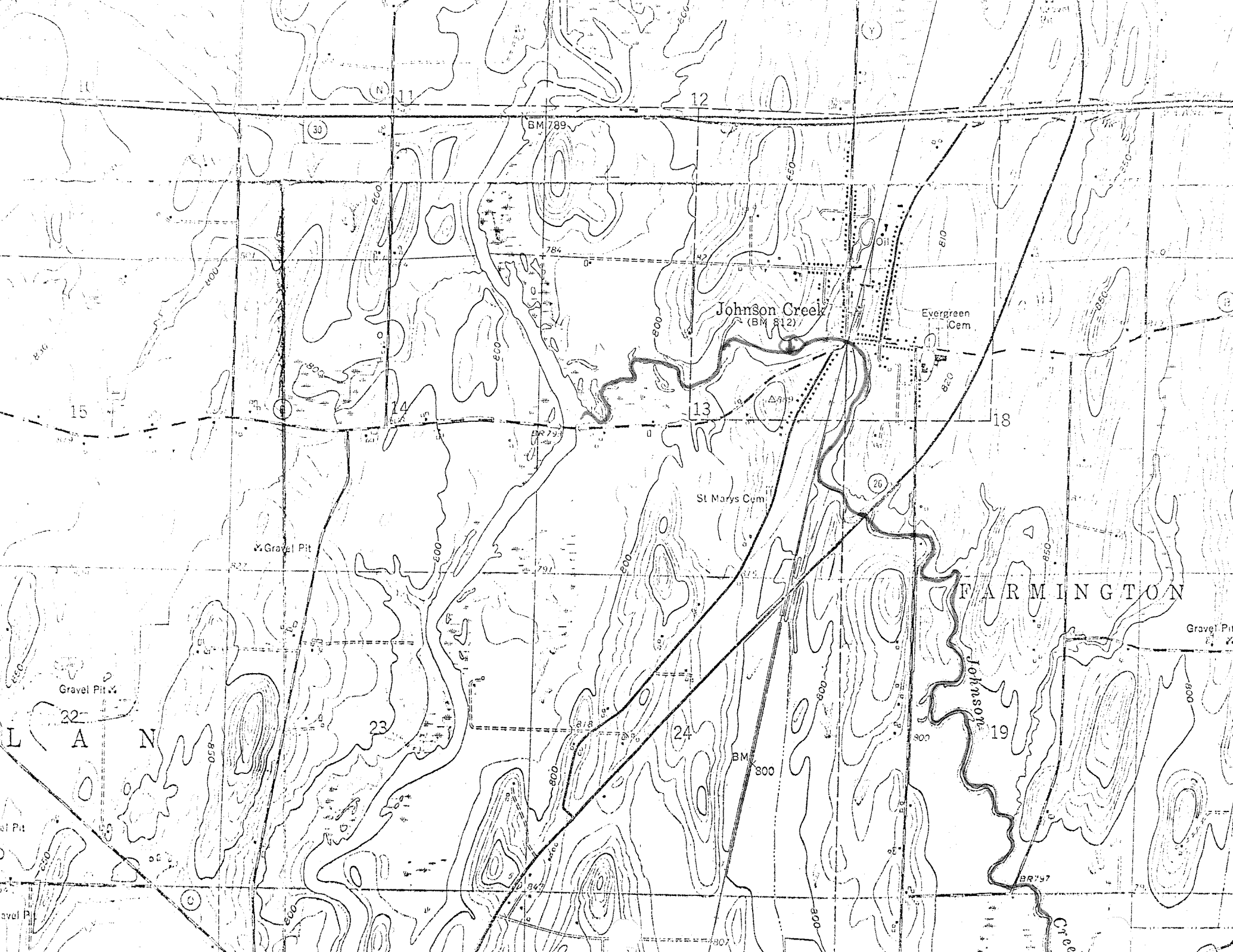
The above recommendations represent a concurrence of opinion of the stream classification team who are as follows: Roy Lembcke, District Engineer; Jim Congdon, Area Fish Manager; Tom Bainbridge, Stream Classification Coordinator; Roger Schlessler, Natural Resources Technician.

Respectfully submitted,


Thomas Bainbridge
Stream Classification Coordinator

TB:cb

27/2
45/4
10/2
6/2



Johnson Creek
(BM 812)

Evergreen
Cem.

St. Marys Cem.

FARMINGTON

Johnson
Cem.

Gravel Pit

LAN

Gravel Pit

Gravel Pit

Gravel P

Creek