

1976 100,000  
73-1, Kenosha County  
Des Plaines River Drainage Basin

The effluent from the 73-1 Wastewater Treatment Plant (Section 33, T1N, R22E) discharges to an intermittent tributary (7<sup>0</sup>/<sub>10</sub> of 0 cfs) of the Des Plaines River. The stream originates in several small intermittent channelized tributaries which drain agricultural lands and several residential developments. The surrounding land uses result in a stream having a silt substrate and turbid water. The stream is dry most of the year. The tributaries join a short distance upstream of the treatment plant and flow 0.75 mile before entering a small pond at CTH "H", which overflows into the Des Plaines River. The pond is utilized for fishing and other recreational pursuits.

Recommendations

The section of stream upstream of CTH "H" shall be classified as a noncontinuous agricultural stream. The pond shall be classified as a flowage. The Des Plaines River shall be classified as a continuous fish and aquatic life stream.

Rejustification for the Stream Classification of an Unnamed Tributary of  
the Des Plaines River (Pleasant Prairie #73-1)

Because of the physical limitations of this stream and the water quality problems associated with adjacent land uses, this stream is unable to support a full fish and aquatic life population. It is likely that an intensive investigation of the stream in Illinois will support this conclusion.

## Stream Classification Worksheet

Receiving Watercourse: Tributary to the Des Plaines River.

District: Southeast.

Location: From T1N, R22E, Section 33 to T46N, R22E, Section 2.

Drainage Basin: Des Plaines River.

Discharger: Pleasant Prairie S.D. #73-1.

Classification Recommendation: It is recommended that the tributary be classified as follows:

- 1) Noncontinuous, marginal - the section of stream upstream of STH "H".
- 2) Flowage - the pond.

### Physical Characteristics:

Land Use: Agricultural lands and several residential developments.

Bottom Type: Silt.

Hydrologic Features: Length: 0.75 mile.  
Q7,10: 0 cfs.  
Existing Service Area: 0.1 sq. mi.  
Turbid Water

Channel Alterations: The stream originates in several small intermittent channelized tributaries.

Chemical Characteristics: No information available.

Biological Characteristics: No information available.

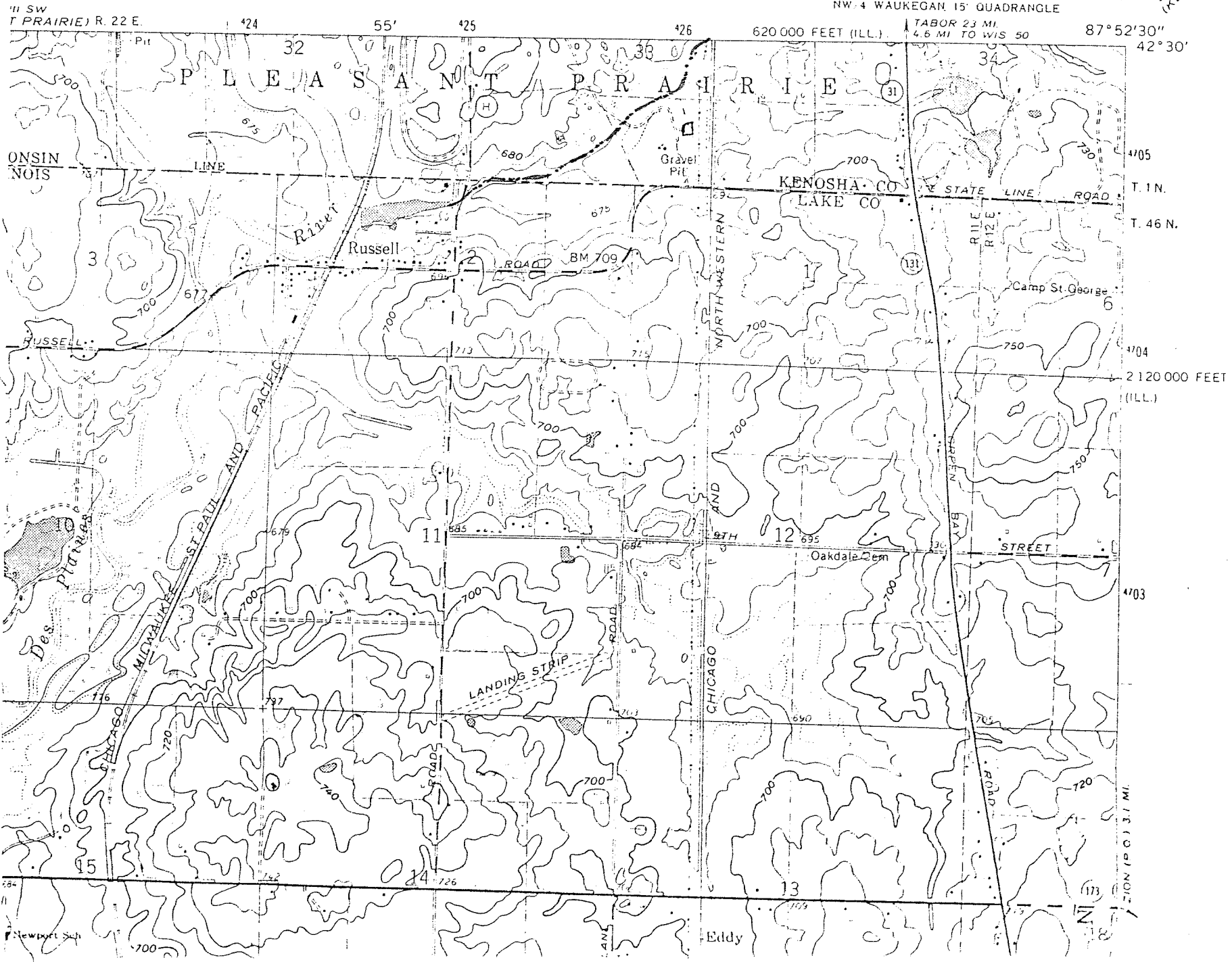
Hydrologic Features: Length: 0.75 mile.  
Q7,10: 0 cfs.  
Existing Service Area: 0.1 sq. mi.  
Turbid Water

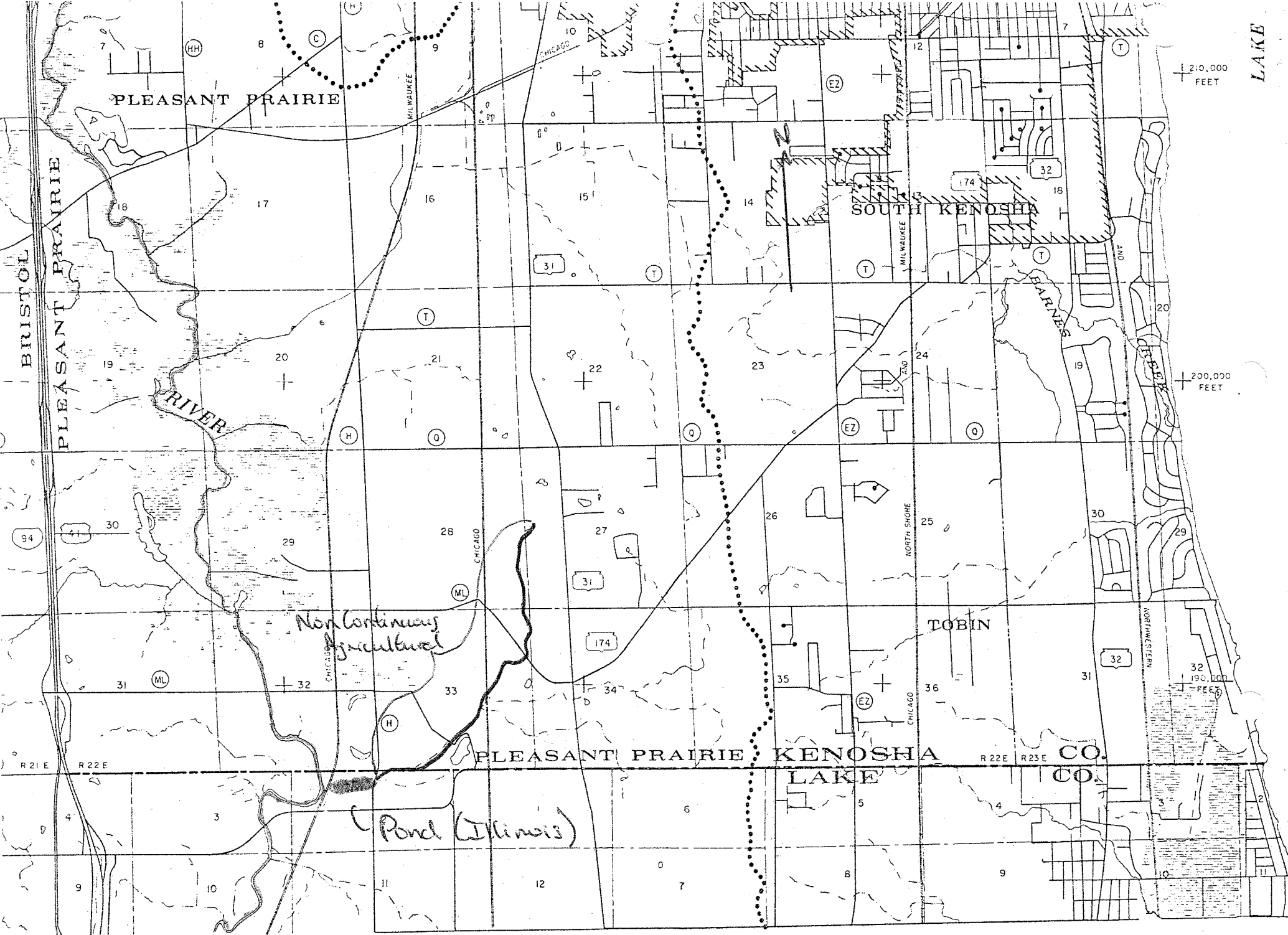
Channel Alterations: The stream originates in several small intermittent channelized tributaries.

Chemical Characteristics: No information available.

Biological Characteristics: No information available.

3469 111 SE  
(KENOSHAY)





PLEASANT PRAIRIE

BRISTOL  
PLEASANT PRAIRIE

RIVER

SOUTH KENOSHA

TOBIN

PLEASANT PRAIRIE KENOSHA  
LAKE CO. CO.

*Non Continuous  
Agricultural*

*(Pond Illinois)*

210,000  
FEET

200,000  
FEET

180,000  
FEET

LAKE

DNR OFFICE MEMO  
Form 9800-43

Joe

To Jeff Bode-SED Date \_\_\_\_\_ Time \_\_\_\_\_

From Becky Wallace of \_\_\_\_\_

Phone \_\_\_\_\_ Received by \_\_\_\_\_

- Please Call
- Returning Your Call
- Will Call Again
- Called to See You

Comment

For Your Information

See Me

Take Action

Approve

Sign

Revise

Prepare Reply For My Signature

Reply Direct

Per Your Request

Code

Route to:

Return

File

RECEIVED  
 AUG 19 9 37 AM '80