

CORRESPONDENCE/MEMORANDUM

---

DATE: November 1, 2002

FILE REF: Unnamed Wetland Trib., Mud Lake

TO: Laura Bub

FROM: Craig Helker, Water Resources Biologist

SUBJECT: Stream Classification Summary

Rainbow Lake Manor WWTP (formerly Paramski Mobile Home Park) discharges to an unnamed diffuse wetland stream (Galarneau, 1994). This diffuse stream outlets at Mud Lake, Kenosha County. Previous classifications are on file (1976, 1994) listing this diffuse wetland stream as Limited Aquatic Life. Currently, this stream is listed in NR 104 as LAL.

Follow-up field reconnaissance performed in 2000 by Department Staff failed to locate a defined channel within or exiting the wetland complex.

Based on former stream classifications and the 2000 field reconnaissance, I recommend that the Unnamed Wetland Tributary to Mud Lake continue to be classified Limited Aquatic Life.

Attachment:

Topographic Map



*Pausch Lake*

780

789

Hosmer Cem

777

770

32

*Mud Lake*  
760

Pikeville Sch

781

414

2/30/4

415

41

ailer Park  
BM. 795

KENOSHA CO

Pikevill

R. Johnson

Paramski Mobile Home Park, Kenosha County  
Des Plaines River Drainage Basin

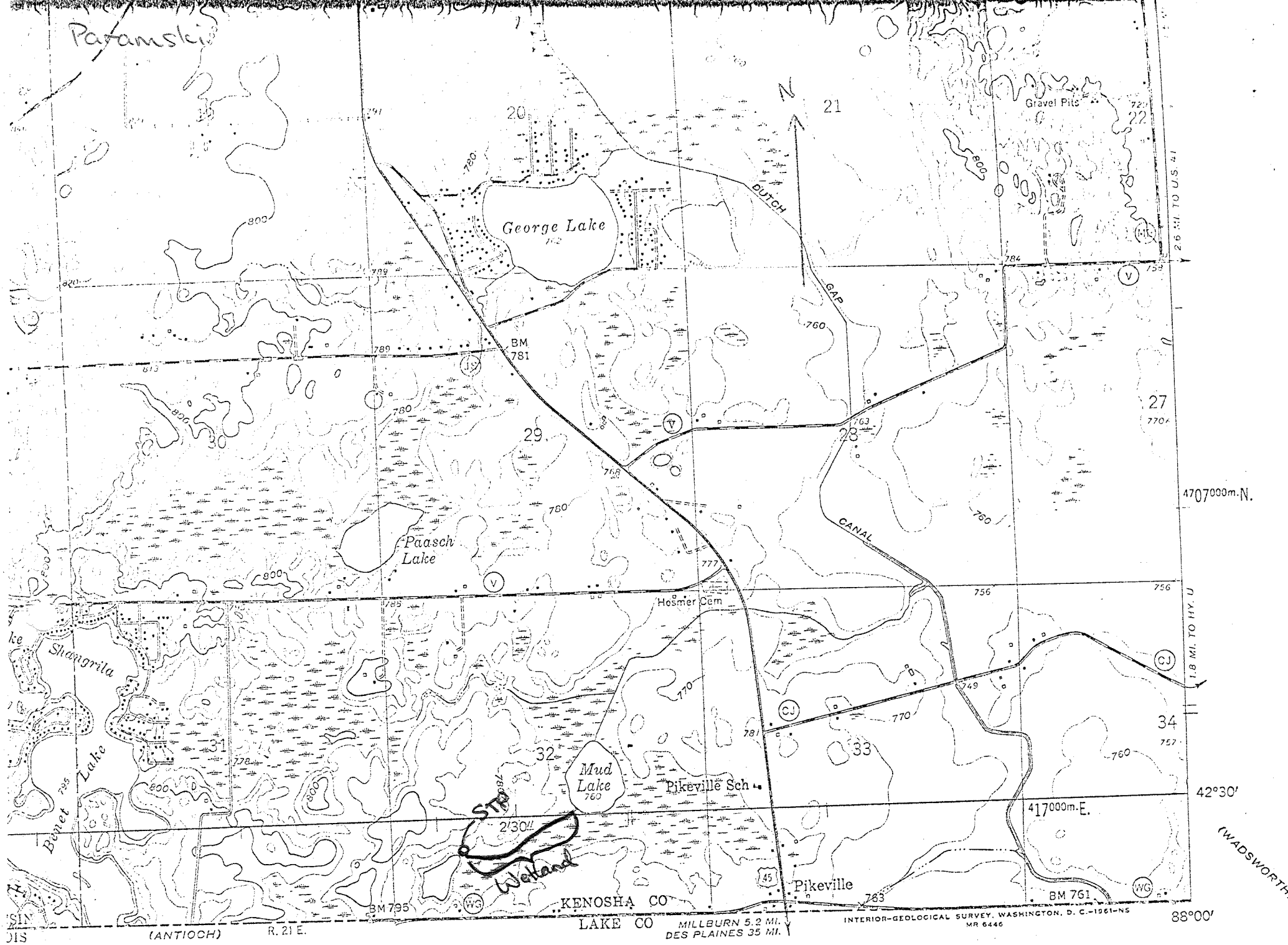
The effluent from the Paramski Mobile Home Park discharges to a tributary of Mud Lake which has a  $7Q_{10}$  of 0 cfs. The effluent is discharged to a poorly defined channel which flows through a wetland for less than 0.5 miles before entering Mud Lake. The land use within the drainage area is primarily agricultural with some residential development in the mobile home park and along the lake shore.

Recommendations

The tributary shall be classified as a wetland. Mud Lake shall be classified as a lake.

Now  
Rainbow Lake Manor

Paramski



26 MI. TO U.S. #1

4707000m.N.

1.8 MI. TO HY. U

42°30'

(WADSWORTH)

88°00'

SIN

(ANTIOCH) R. 21 E.

KENOSHA CO  
LAKE CO

MILLBURN 5.2 MI.  
DES PLAINES 35 MI.

INTERIOR-GEOLOGICAL SURVEY, WASHINGTON, D. C.-1961-NS  
MR 6446

SCALE 1:24000

1 MILE

ROAD CLASSIFICATION

Heavy-duty

Light-duty