

Du Vall Farmers Co-op
Luxemburg, Kewaunee County

The Du Vall Farmers Co-op discharges to a natural drainage ditch which joins the Red River approximately 1/2 mile west of Du Vall. Red River is an intermittent stream capable of supporting minnows, crayfish, and aquatic insects. The river bed is bedrock and rubble.

Recommendations

The Red River should be classified as non-continuous/intermediate fish and aquatic life. The ditch to which the cheese factory discharges should be classified as diffused surface water drainage ditch/agricultural.



Dan Uhl
District Engineer

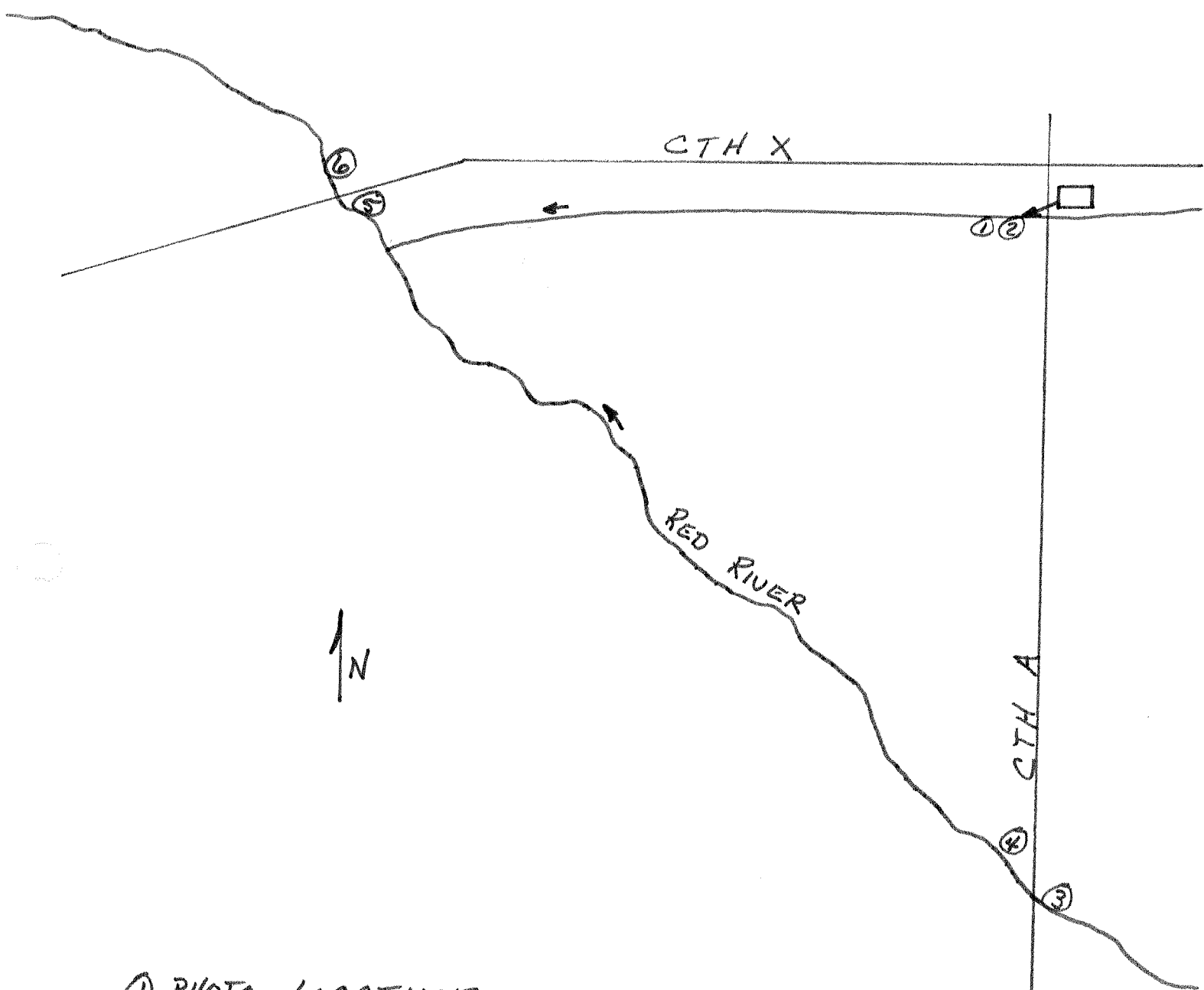


Dennis C. Weisensel
District Biologist

DU:DCW:sh

DU VALL FARMERS COOP CHEESE FACTORY

SURVEY DATE : 8-27-75



- ① PHOTO LOCATIONS
- DIFFUSED SURFACE WATER / AGRICULTURAL
- NON-CONTINUOUS / INTERMEDIATE FISH & AQUATIC LIFE

DV
9-10-75



DUVALL CHEESE FACTORY
LOOKING UPSTREAM
ON RED RIVER ABOVE
OUTFALL

#3

DUVALL CHEESE FACTORY
AT OUTFALL

#2

DUVALL CHEESE FACTORY
AT OUTFALL

#1

DUVALL CHEESE FACTORY
LOOKING DOWNSTREAM
ON RED RIVER BELOW
OUTFALL

#6

DUVALL CHEESE FACTORY
LOOKING UPSTREAM
ON RED RIVER BELOW
OUTFALL

#5

DUVALL CHEESE FACTORY
LOOKING DOWNSTREAM
ON RED RIVER ABOVE
OUTFALL

#4