

Benton Water Department
Lafayette County

January 6, 1977

(Galena) Fever River - T1N, R1E, Sections 32-16

Surface Acres = 100.8 Miles, Miles = 29.4, Gradient = 9.9 feet per mile,
Total alkalinity = 257 mg/l, Volume of flow = 22.3 cfs.

The (Galena) Fever River drains approximately 142.7 square miles which includes the flow from eleven named streams and their tributaries. It flows through the historical lead mining district which is apparent from the many mine dumps and pock marks on the landscape throughout the watershed. As a result, much of the water received by the stream drains from old or current mines and dumps. However, aside from a few streams in its watershed which are adversely affected by such drainage within the watershed the (Galena) Fever River appears to be unaffected.

The predominant bottom types are gravel and rubble in the upper two-thirds of the stream while the lower one-third has silt with some gravel. During periods of heavy runoff the stream banks are subject to heavy erosion especially in the lower extremities where enormous water volumes are not unusual. Over 90 percent of the land in the watershed is used for agricultural purposes and the remainder is in upland hardwoods.

The lower, larger portions of the stream within the county are managed for smallmouth bass, catfish and walleyes. The upper, smaller sections of the stream contain forage fishes. Game assets within the watershed include ducks and muskrats in and along the stream and pheasants, quail, Hungarian partridge, squirrels, rabbits and deer in the uplands. There is no public ownership of land; however, in 1965, 2,076 acres of land was leased by the Bureau of Game Management for public hunting and fishing grounds in the Benton area. The stream is also accessible from twelve town, two county, and two state road bridges.

Recommendations

From the Benton discharge and for the remainder of the Galena River the classification should be continuous fish and aquatic life.

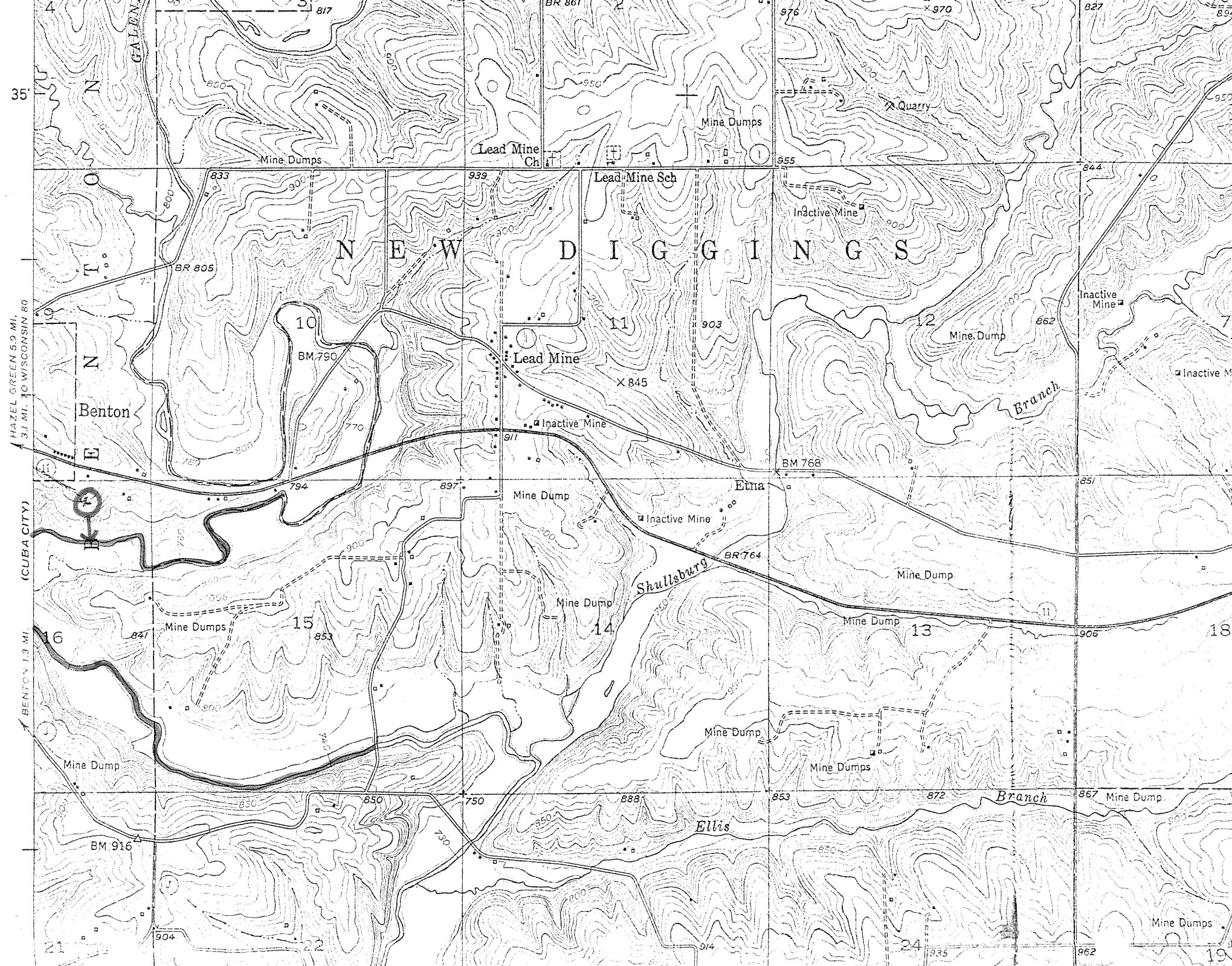
The above recommendations represent a concurrence of opinion of the stream classification team who are as follows:

Jerry Friederichs - District Engineer
Gene Van Dyck - Area Fish Manager
Tom Bainbridge - District Biologist
Roger Schlessler - Natural Resources Technician

Respectfully submitted,


Thomas Bainbridge
Stream Classification Coordinator

RS:js



HAZEL GREEN 5.9 MI.
3.1 MI. TO WISCONSIN 80

(CUBA CITY)
BENTON 1.3 MI.

35°

NEW DIGGINGS

Benton

Lead Mine Ch.

Lead Mine Sch

Lead Mine

Mine Dumps

Quarry

Inactive Mine

Inactive Mine

Inactive M

Inactive Mine

Mine Dump

Etna

Inactive Mine

Mine Dump

Mine Dump

Mine Dumps

Mine Dump

Mine Dump

Mine Dump

Mine Dumps

Branch

Mine Dump

Ellis

BM 916

Mine Dumps

35°

HAZEL GREEN 5.9 MI.
3.1 MI. TO WISCONSIN 80

(CUBA CITY)
BENTON 1.3 MI.

NEW DIGGINGS

Benton

Lead Mine Ch.

Lead Mine Sch

Lead Mine

Mine Dumps

Quarry

Inactive Mine

Inactive Mine

Inactive M

Inactive Mine

Mine Dump

Etna

Inactive Mine

Mine Dump

Mine Dump

Mine Dumps

Mine Dump

Mine Dump

Mine Dump

Mine Dumps

Branch

Mine Dump

Ellis

BM 916

Mine Dumps



BENTON

Benton
(BM 932)

PRINCIPAL MERIDIAN
FOURTH

NORTH WESTERN

COON

Branch

GALENA R.

SHULLS JRG 7.8 MI.
MONROE 44 MI.

(NEW DIGGINGS)

0.2 MI. TO HY. W.

0.5 MI. TO S.S.