

Argyle Wastewater Treatment Plant
Lafayette County

January 6, 1977

East Branch of the Pecatonica River - Surface Acres = 120.7 Miles, Miles = 19.5 (within county), Gradient = 6.2 feet per mile.

With its beginnings in Iowa County, the East Branch of the Pecatonica River drains approximately 469 square miles in Wisconsin. Within Lafayette County it drains approximately 190 square miles for 40.4 percent of its total watershed area. Most of the uplands in the watershed are tillable cropland. Much of the floodplain is covered with fresh meadow and meadow pasture with occasional shallow marsh and well drained pasture. Tributaries which enter the stream directly include eleven named and six unnamed streams. Lakes within the direct drainage area are Yellowstone Lake and six oxbow lakes which are discussed elsewhere in this report. High water levels and flooding are common occurrences for this stream during the spring thaw and after periods of heavy rainfall. Stream banks are fairly stable being well covered by perennial vegetation which restricts soil erosion. Nevertheless, signs of heavy bank erosion are common throughout its length. This is understandable since the normal volume of flow is sometimes increased 60 fold at certain times during the year. From the Iowa County line down to its junction with the West Branch, the sport fishery consists of panfish, smallmouth bass, channel and flathead catfish and walleyes. Also included in the fishery are carp, white suckers, quillback, buffalo, redhorse, and the usual forage fishes. The farm ponds within the watershed which are able to support a fishery, and are well-managed, also provide a good panfish and largemouth bass fishery. Those which have good springs may even support trout.

Wetlands within the basin are generally restricted to the lands adjoining the mainstream and particularly the floodplain. In these areas there is suitable habitat for furbearers and nesting puddle ducks. The stream itself provides food and resting spots for migrants during the spring and fall. Muskrats are common and beaver are present in the basin. Deer, fox, rabbits, squirrels, pheasants, ruffed grouse, Hungarian partridge and quail are common on the uplands of the general watershed. Public lands within the watershed include the 2,217 acre state-owned Yellowstone Lake Wildlife Area, and eight acre city park in Blanchardville; a one acre wayside, a 20 acre park, and a seven acre campground in Argyle. Almost seven miles of the river flows through the Argyle Public Hunting and Fishing Grounds which consists of 2,796 acres of land leased by the DNR.

Recommendations

From the Argyle discharge and for the remainder of the East Branch of the Pecatonica River the classification should be continuous fish and aquatic life.

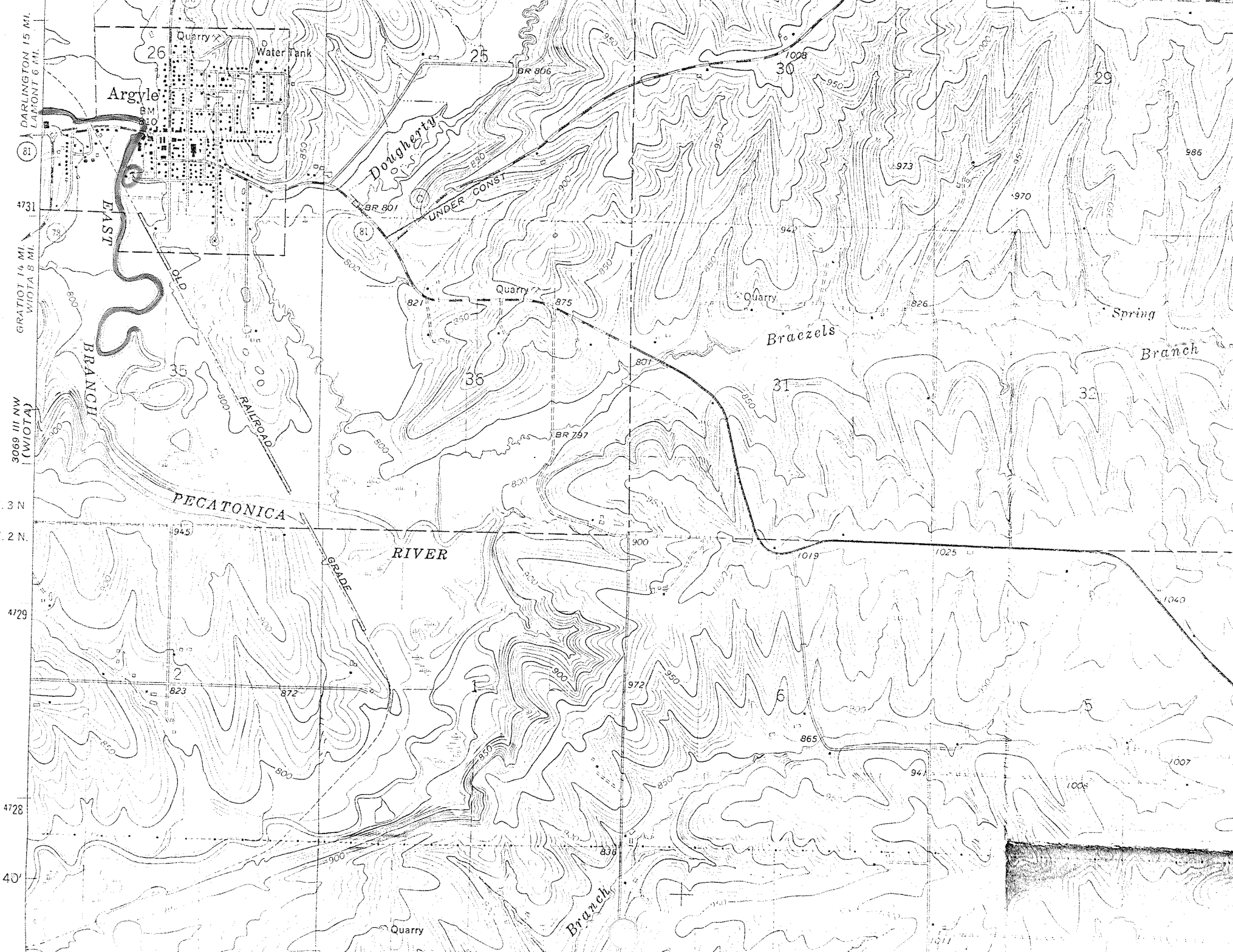
The above recommendations represent a concurrence of opinion of the stream classification team who are as follows:

Jerry Friederichs - District Engineer
Gene Van Dyck - Area Fish Manager
Tom Bainbridge - District Biologist
Roger Schlessler - Natural Resources Technician

Respectfully submitted,


Thomas Bainbridge
Stream Classification Coordinator

RS:js



DARLINGTON 15 MI.
LANTONI 6 MI.
GRATOT 14 MI.
WIOTA 8 MI.
3069 III NW
(WIOTA)

4731
4729
4728
40'

Argyle

Quarry
Water Tank

Dougherty

UNDER CONST.

Braezels

Spring

Branch

PECATONICA RIVER

Branch

Quarry

25

BR 806

30

31

32

36

26

29

T. 3 N.
T. 2 N.

4729

4728

40'

Quarry

Water Tank

Quarry

Quarry

PECATONICA

RAILROAD

Branch

Quarry

25

BR 806

30

31

32

36

26

29

T. 3 N.
T. 2 N.

4729

4728

40'

Quarry

Water Tank

Quarry

Quarry

PECATONICA

RAILROAD

Branch

Quarry

25

BR 806

30

31

32

36

26

29

T. 3 N.
T. 2 N.

4729

4728

40'

Quarry

Water Tank

Quarry

Quarry

PECATONICA

RAILROAD

Branch

Quarry

25

BR 806

30

31

32

36

26

29

T. 3 N.
T. 2 N.

4729

4728

40'

Quarry

Water Tank

Quarry

Quarry

PECATONICA

RAILROAD

Branch

Quarry

25

BR 806

30

31

32

36

26

29

T. 3 N.
T. 2 N.

4729

4728

40'

Quarry

Water Tank

Quarry

Quarry

PECATONICA

RAILROAD

Branch

Quarry

25

BR 806

30

31

32

36

26

29

T. 3 N.
T. 2 N.

4729

4728

40'

Quarry

Water Tank

Quarry

Quarry

PECATONICA

RAILROAD

Branch

Quarry

25

BR 806

30

31

32

36

26

29

T. 3 N.
T. 2 N.

4729

4728

40'

Quarry

Water Tank

Quarry

Quarry

PECATONICA

RAILROAD

Branch

Quarry

25

BR 806

30

31

32

36

26

29

T. 3 N.
T. 2 N.

4729

4728

40'

Quarry

Water Tank

Quarry

Quarry

PECATONICA

RAILROAD

Branch

Quarry

25

BR 806

30

31

32

36

26

29

T. 3 N.
T. 2 N.

4729

4728

40'

Quarry

Water Tank

Quarry

Quarry

PECATONICA

RAILROAD

Branch

Quarry

25

BR 806

30

31

32

36

26

29

T. 3 N.
T. 2 N.

4729

4728

40'

Quarry

Water Tank

Quarry

Quarry

PECATONICA

RAILROAD

Branch

Quarry

25

BR 806

30

31

32

36

26

29

T. 3 N.
T. 2 N.

4729

4728

40'

Quarry

Water Tank

Quarry

Quarry

PECATONICA

RAILROAD

Branch

Quarry

25

BR 806

30

31

32

36

26

29

T. 3 N.
T. 2 N.

4729

4728

40'

Quarry

Water Tank

Quarry

Quarry

PECATONICA

RAILROAD

Branch

Quarry

25

BR 806

30

31

32

36

26

29

T. 3 N.
T. 2 N.

4729

4728

40'

Quarry

Water Tank

Quarry

Quarry

PECATONICA

RAILROAD

Branch

Quarry

25

BR 806

30

31

32

36

26

29

T. 3 N.
T. 2 N.

4729

4728

40'

Quarry

Water Tank

Quarry

Quarry

PECATONICA

RAILROAD

Branch

Quarry

25

BR 806

30

31

32

36

26

29

T. 3 N.
T. 2 N.

4729

4728

40'

Quarry

Water Tank

Quarry

Quarry

PECATONICA

RAILROAD

Branch

Quarry

25

BR 806

30

31

32

36

26

29

T. 3 N.
T. 2 N.

4729

4728

40'

Quarry

Water Tank

Quarry

Quarry

PECATONICA

RAILROAD

Branch

Quarry

25

BR 806