

Village of Gratiot  
Lafayette County

October 14, 1976

Wolf Creek

Surface acres = 13.8, Miles = 9.7, Gradient = 21.6 feet per mile.

As a spring-fed and warm water drainage stream, Wolf Creek flows north-easterly into the West Branch of the Pecatonica River. There are four unnamed tributaries that have a perennial flow. Their combined discharges are equivalent to about 30 percent of Wolf Creek's total discharge. Trout Brook (Slawther Creek) is a principle tributary which enters just above the mouth at the Town of Gratiot. Its flow contributes about 46 percent of Wolf Creek's base flow. Most of the floodplain throughout the watershed is in firm and meadow pasture while the uplands are either cropped or heavily wooded. Rubble mixed with gravel is the most common bottom type while silt is found at the mouth. The sport fishery consists of a large population of smallmouth bass with some walleyes and channel catfish in lower reaches.

Recommendations

From the Gratiot Sewage Treatment Plant outfall and for the remainder of Wolf Creek the classification should be continuous fish and aquatic life.

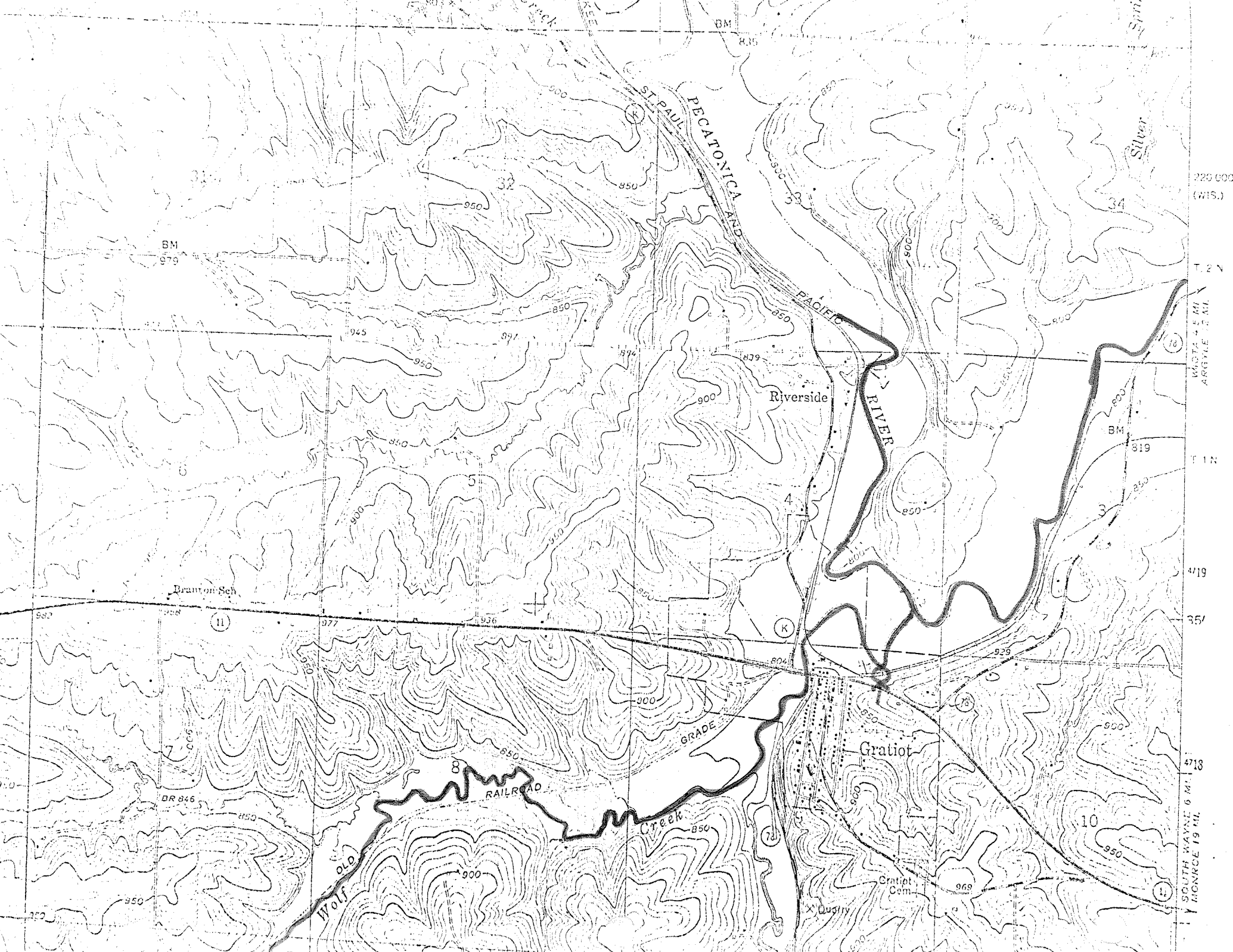
The above recommendations represent a concurrence of opinion of the stream classification team who are as follows:

Gerald Friederichs, District Engineer  
Gene Van Dyck, Area Fish Manager  
Tom Bainbridge, District Biologist  
Roger Schlessner, Natural Resources Technician

Respectfully submitted,

  
Tom Bainbridge  
Stream Classification Coordinator

TB:cb



220 000  
(WIS.)

T 2 N  
WASTON 4 MI  
ARGYLE 2 MI

T 1 N  
419  
351

478  
SOUTH WAYNE 6 MI  
MONROE 19 MI