

**Region** NOR **County** Burnett **Report Date** 9/1975 **Classification** LAL  
**Water Body:** Wetland  
**Discharger:** V. of Siren

**If stream is classified as Limited Forage Fish (LFF) or Limited Aquatic Life (LAL), check any of the following Use Attainability Analysis factors that are identified in the classification report:**

- Naturally occurring pollutant concentrations prevent the attainment of use
- Natural, ephemeral, intermittent or low flow conditions or water levels prevent the attainment of the use, unless these conditions may be compensated for by the discharge of sufficient volume of effluent discharges without violating State water conservation requirements to enable uses to be met
- Human caused conditions or sources of pollution prevent the attainment of the use and cannot be remedied or would cause more environmental damage to correct than to leave in place
- Dams, diversions or other types of hydrologic modifications preclude the attainment of the use, and it is not feasible to restore the water body to its original condition or operate such modification in a way that would result in the attainment of the use
- Physical conditions related to the natural features of the water body, such as the lack of a proper substrate, cover, flow, depth, pools, riffles, and the like, unrelated to water quality, preclude attainment of aquatic life protection uses
- Controls more stringent than those required by sections 301(b) and 306 of the Act would result in substantial and widespread economic and social impact

**Supporting Evidence in the report (include comments on how complete/thorough data is)**

- Biological Data (fish/invert)
- Chemical Data (temp, D.O., etc.)
- Physical Data (flow, depth, etc.)
- Habitat Description
- Site Description/Map
- Other: photographs

**Historical Reports in file:**

9/1975 -

**Additional Comments/How to improve report:**

- LAL class'n b/c of wetland designation  
- report states that classification is provisional b/c of potential for future changes - this should be explored since report is 25+ yrs old.

rd #1  
Card 371-021  
9-3-75  
DJR:el

SIREN, BURNETT COUNTY

Wastewater Receiving Stream Classification

A two-cell sewage stabilization pond system for the treatment of municipal wastewaters is located southwest of the Village of Siren. The outfall is situated on the southeast corner of the second cell. The discharge from this system enters a wooded wetland containing tamarack, spruce, bog plants, cattails and marsh grasses in the vicinity of the lagoon discharge.

This wetland is varied and complex and ranges from a cattail swamp adjacent to Highway 70 on the north to an acid bog surrounding two small unnamed lakes on the south. There has been no evidence to date that the effect of the Siren wastewater discharge has traveled through this wetland in either direction. However, should the population served increase or other factors change the character of the effluent, the potential for surface water contamination is quite high.

Recommendation:

The area receiving the effluent from the Siren sewage treatment ponds shall be classified as a wetland. This classification shall be considered provisional because of the potential for future changes in this system.

Good!  
2/15/75

BIG DOCTOR LAKE

CROOKED LAKE

ST. HWY 35

SIREN  
(Village of)

ST. HWY 70

Co. HWY B

Sewage  
Lagoons

ST. HWY 35

500 LINE APP

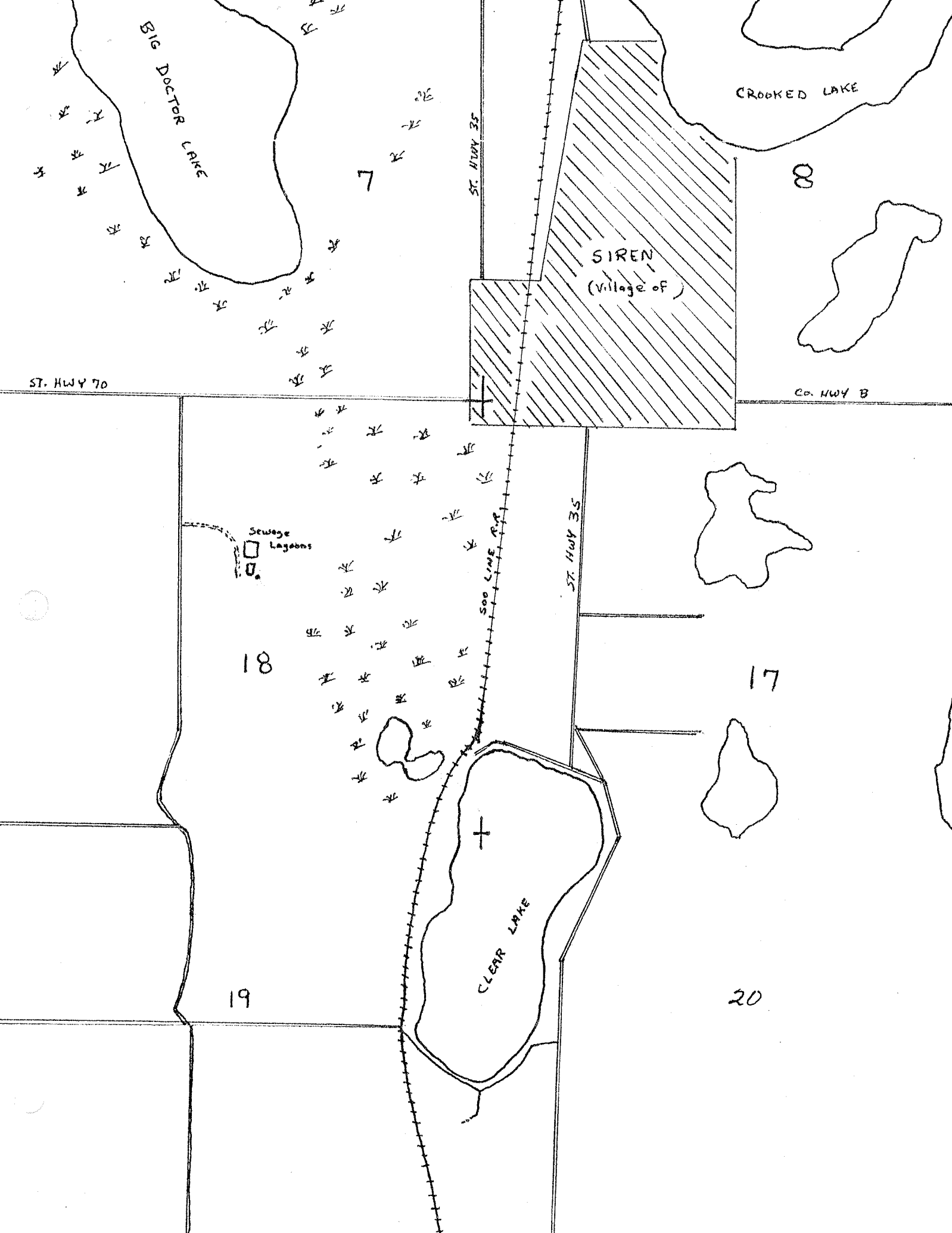
18

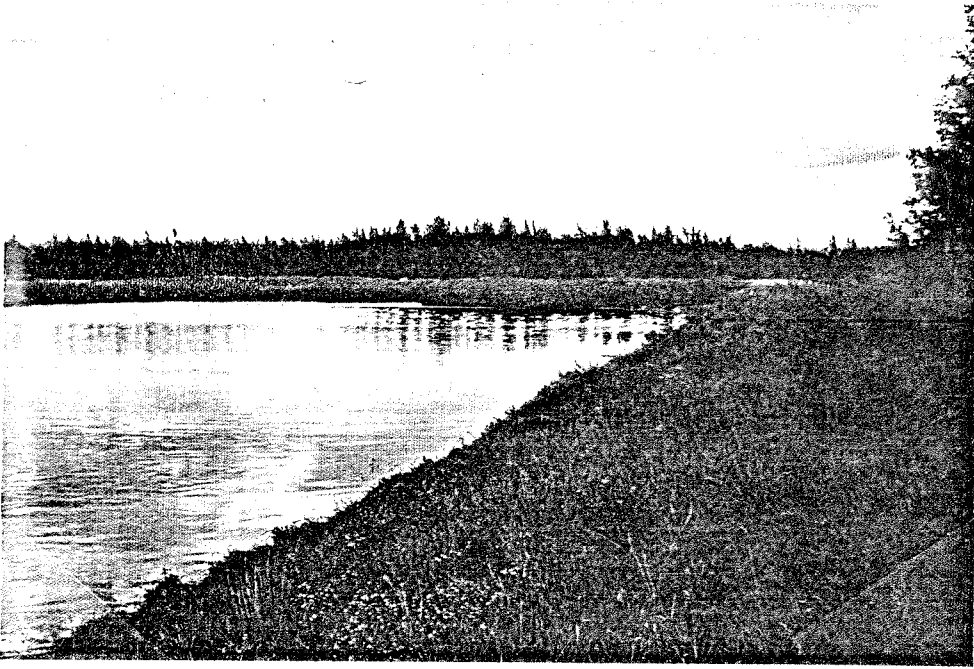
17

CLEAR LAKE

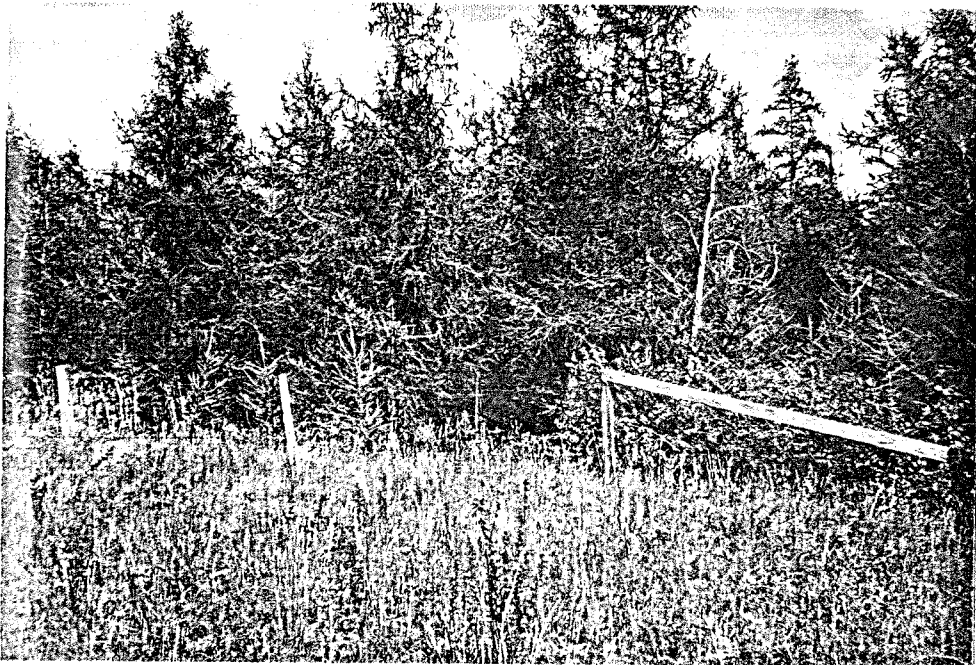
19

20





Siren sewage lagoon  
(second cell)  
Outfall is in  
right background



Siren sewage lagoon  
discharge area  
- Looking east



Siren sewage lagoons  
discharge area  
- Looking southeast



Siren sewage Lagoon  
discharge area  
- Looking south west