

Black Earth Sewage Plant
Cross Plains Water and Sewer Utility
Mazomanie Sewage Treatment Plant
Dane County

January 18, 1977

Black Earth Creek - Surface Acres = 50.9 Miles, Miles = 21.0, Gradient = 6.9 feet per mile.

A spring fed stream tributary to Blue Mounds Creek, with three major feeder streams, Garfoot, Vermont and Halfway Prairie Creeks. The stream receives treated sanitary effluent from the Villages of Cross Plains, Black Earth and Mazomanie, and receives pumped seepage from gravel mining operations near its headwaters. An excellent trout fishery is maintained in about 11 miles of stream. There are 54 acres of fresh meadow contiguous with the stream banks. The stream supports some fall jump shooting for waterfowl and some upland game hunting opportunities on the bordering 26 acres of land available for public use through easement and public ownership. An intensive stream habitat improvement program was initiated in 1949 and continues to date. All but the headwaters are considered navigable.

Recommendations

Black Earth Creek in its entirety should be classified continuous fish and aquatic life.

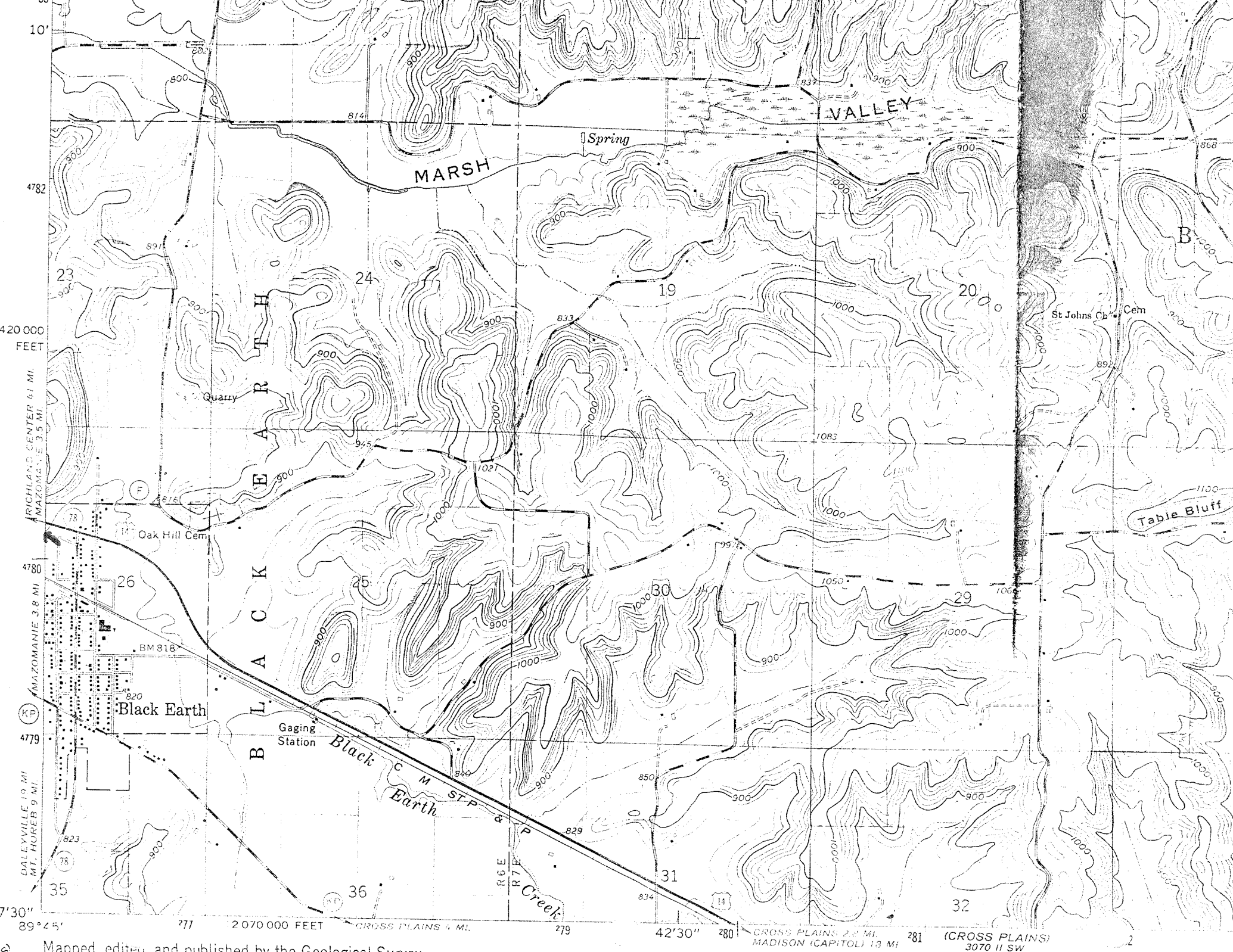
The above recommendations represent a concurrence of opinion of the stream classification team who are as follows:

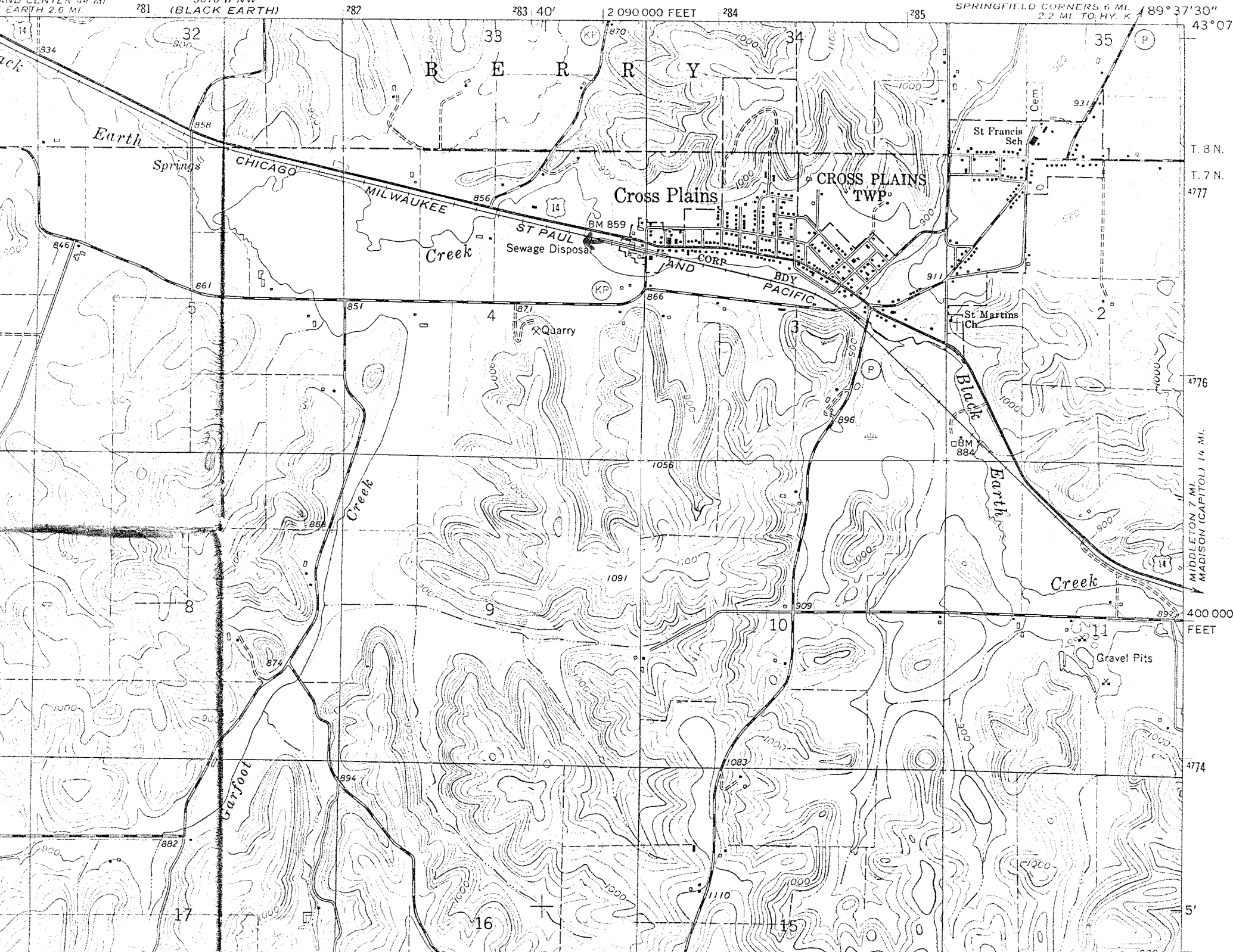
George Osipoff - District Engineer
Clifford Brynildson - Area Fish Manager
Tom Bainbridge - District Biologist
Roger Schlessler - Natural Resources Technician

Respectfully submitted,


Thomas Bainbridge
Stream Classification Coordinator

RS:js





281 (BLACK EARTH) 282 283 40' 2 090 000 FEET 284 285

14 32 33 B E R R Y 34 35 43° 07'

Earth Springs CHICAGO MILWAUKEE Cross Plains CROSS PLAINS TWP. St Francis Sch. Cem. 931

858 856 BM 859 ST PAUL Sewage Disposal LAND CORP B.D.Y. PACIFIC 911

846 861 851 4 871 Quarry 866 866 911 2

846 861 851 4 871 Quarry 866 866 911 2

846 861 851 4 871 Quarry 866 866 911 2

846 861 851 4 871 Quarry 866 866 911 2

846 861 851 4 871 Quarry 866 866 911 2

846 861 851 4 871 Quarry 866 866 911 2

846 861 851 4 871 Quarry 866 866 911 2

846 861 851 4 871 Quarry 866 866 911 2

846 861 851 4 871 Quarry 866 866 911 2

846 861 851 4 871 Quarry 866 866 911 2

846 861 851 4 871 Quarry 866 866 911 2

846 861 851 4 871 Quarry 866 866 911 2

846 861 851 4 871 Quarry 866 866 911 2

846 861 851 4 871 Quarry 866 866 911 2

846 861 851 4 871 Quarry 866 866 911 2

846 861 851 4 871 Quarry 866 866 911 2

846 861 851 4 871 Quarry 866 866 911 2

T. 8 N.
T. 7 N.
4777

4776

MIDDLETON 7 MI.
MADISON (CAPITOL) 14 MI.

400 000
FEET

4774

5'

