

Spring Creek (Dorn Creek): Length = 6 miles, Gradient = 21.6 ft/mile, Base discharge = 3.5 cfs. *Mar. 94*

Spring Creek is a tributary to Six Mile Creek and drains approximately 13 square miles of agricultural land in the Town of Westport, Dane County. The stream receives nutrient and sediment loading from row crops and barnyards, although over 325 acres of shallow marsh and sedge meadow border a significant portion of the stream. Some of the wetland is protected under State ownership. Spring Creek supports a fairly diverse forage fisheries, however northern pike, panfish and other Lake Mendota fish seasonally migrate to the stream.

Spring Creek is an important tributary influencing Lake Mendota water quality and habitat for spawning northern pike. The Lake Mendota watershed has been selected as a Priority Lake Project under Wisconsin's Nonpoint Source Water Pollution Abatement Program. Protecting and improving Spring Creek will be a high priority under this program.

**Classification:** Based on the importance of Spring Creek for the water quality and fisheries of Lake Mendota, in addition to resident aquatic communities, the classification is **WARM WATER SPORT FISH COMMUNITIES (WWSF)** the entire length of the stream.

Ditched tributaries with intermittent flow fall under the **LIMITED AQUATIC LIFE (LAL)** category. However, the **LAL** classification of many of these ditched tributaries to Spring Creek may be upgraded to **WWSF** or **WWFF** with implementation of the Nonpoint Source Water Pollution Abatement Project. Stream corridor and wetlands rehabilitation are project goals.

**Common fish species identified in Spring Creek:**

northern pike, central mudminnow, common carp, golden shiner, fathead minnow, bluntnose minnow, northern redbelly dace, pearl dace, creek chub, white sucker, black bullhead, brown bullhead, yellow bullhead, banded killifish, brook stickleback and johny darter.

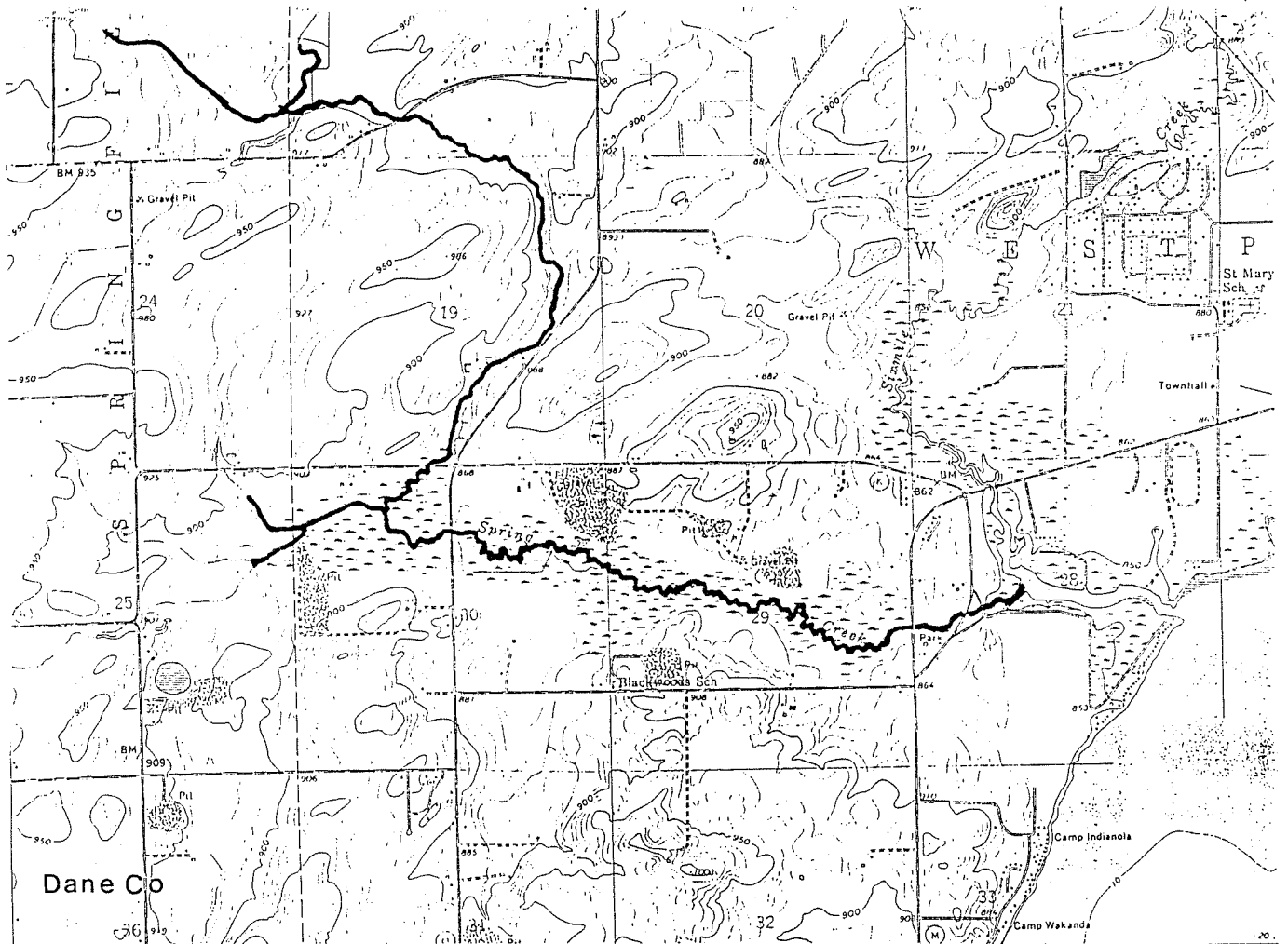
**References:**

DCRPC. 1979. DANE COUNTY WATER QUALITY PLAN. APPENDIX B: WATER QUALITY CONDITIONS. Madison, WI.

Fago, D. 1982. DISTRIBUTION AND RELATIVE ABUNDANCE OF FISHES IN WISCONSIN. WDNR Technical Bulletin No. 136.

WDNR. 1985. SURFACE WATER RESOURCES OF DANE COUNTY.

# SPRING CREEK WATER QUALITY STANDARDS ASSESSMENT



DEPARTMENT OF NATURAL RESOURCES  
SOUTHERN DISTRICT WATER RESOURCES MANAGEMENT

March, 1994

*Dave Marshall*