

Linden Sewage Department
Iowa County

October 26, 1976
East Pecatonica River Tributary

Linden sewage lagoon discharges into East Pecatonica River Tributary. It enters the East Pecatonica River approximately a mile below Linden. It is a spring and seepage-fed tributary which is affected by heavy bank erosion in some areas. The fishery is limited to forage species.

Recommendations

From the Linden outfall and for the remainder of East Pecatonica River tributary the classification should be continuous fish and aquatic life.

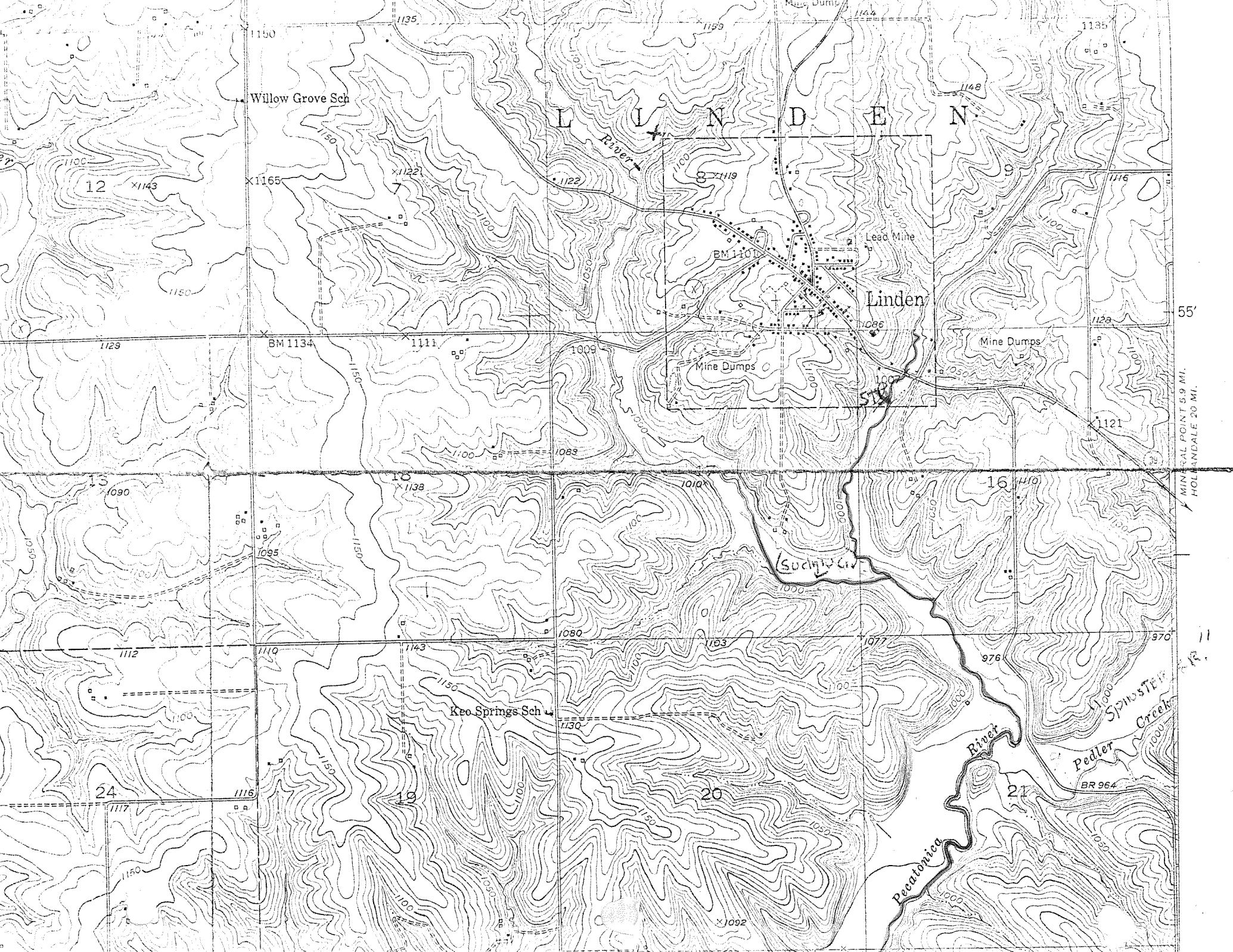
The above recommendations represent a concurrence of opinion of the stream classification team who are as follows:

Gerald Friederichs, District Engineer
Gene Van Dyck, Area Fish Manager
Tom Bainbridge, District Biologist
Roger Schlessor, Natural Resources Technician

Respectfully submitted,


Tom Bainbridge
Stream Classification Coordinator

TB:cb



Willow Grove Sch

L L N D E N

Lenoir River

Lead Mine

Linden

Mine Dumps

Mine Dumps

Suck Creek

Keo Springs Sch

Pecanawick River

Pedler Spring Creek

BR 964

55'

MINERAL POINT 5.9 MI.
HOLLANDALE 20 MI.

12

15

16

24

19

20

21