

Iowa-Grant Joint School District
Iowa County

May 12, 1977

Livingston Branch

Surface Area = 11.0 acres, Length = 8.2 miles, Gradient = 20.7 feet per mile.

Livingston Branch is classified as a warm water seepage stream. Its gradient is less than half the average for Iowa County streams and can be considered sluggish. As a major tributary of the West Branch of the Pecatonica River, in Iowa County, it contributes about one-third of its base flow. It has one tributary whose flow constitutes about 26 percent of the base flow. Ninety-eight percent of its watershed area is farmed and water levels fluctuate sharply in relation to runoff which usually reflects precipitation. Heavy bank erosion is common throughout its length. Although this stream is small, it is considered one of the best smallmouth bass streams in southwestern Wisconsin from standpoints of both reproduction and survival.

Other sport fish species present in its fishery include largemouth and rock bass, channel catfish, green sunfish, pumpkinseed and black bullhead. Forage fish species present are hogsuckers, white suckers, redhorse, bluntnose, fathead, brassy and stoneroller minnows; bigmouth, rosyface and common shiners; creek and hornyhead chubs; blacknose and redbelly dace; brook sticklebacks, barred fantail and johnny darters; and stonecats. There are no public lands on this stream now but because of its high quality smallmouth bass fishery, there should be interest in public use opportunities here. Lack of bank cover restricts the presence of water fowl and marshland furbearers.


Recommendations

From the Iowa-Grant School outfall downstream for the remainder of Livingston Branch the classification should be continuous fish and aquatic life.

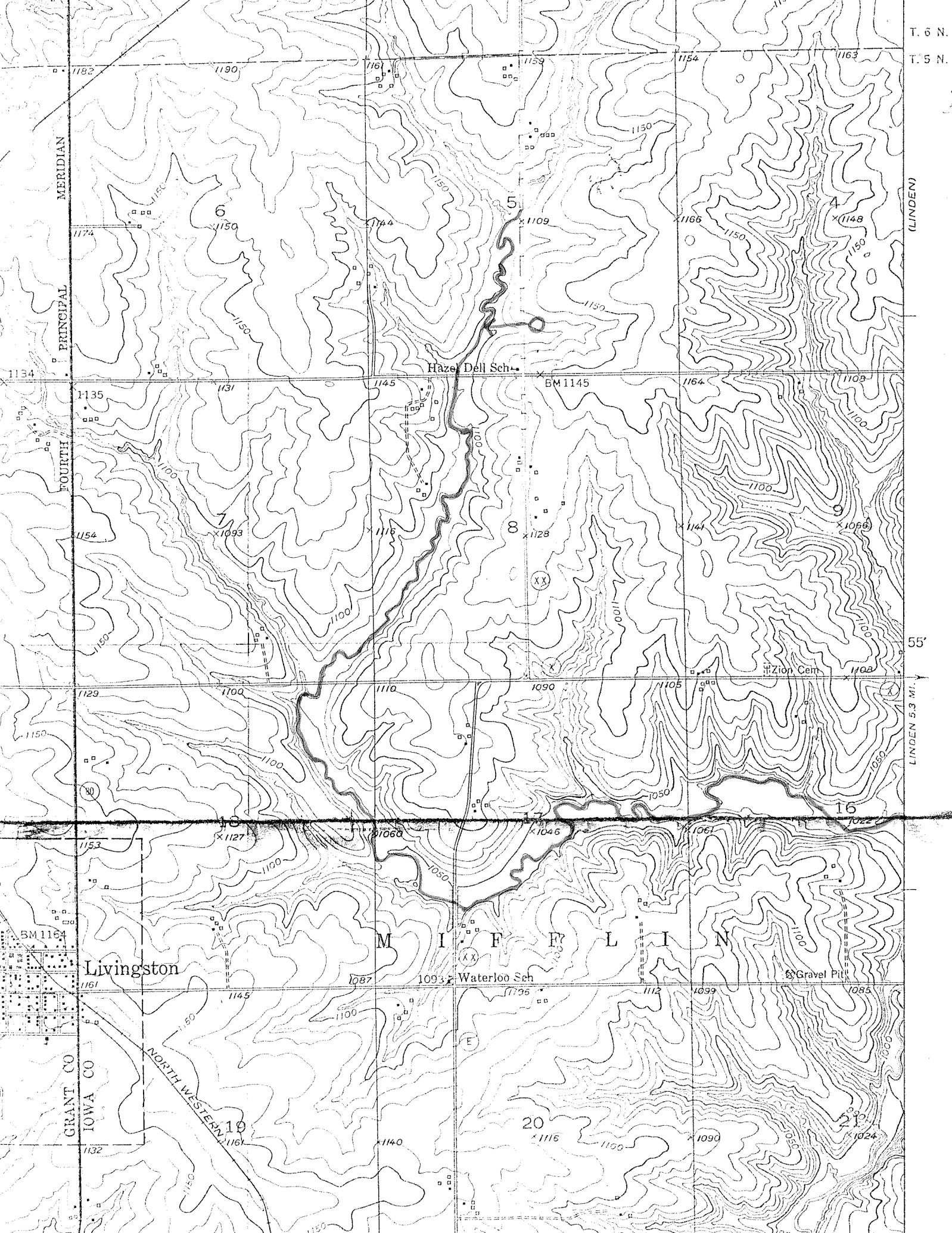
The above recommendations represent a concurrence of opinion of the stream classification team who are as follows:

Dennis Iverson, District Engineer
Gene Van Dyck, Area Fish Manager
Tom Bainbridge, District Biologist
Roger Schlessler, Natural Resources Technician

Respectfully submitted,


Tom Bainbridge
Stream Classification Coordinator

TB:mlu



T. 6 N.
T. 5 N.

(LINDEN)

55'
LINDEN 5.3 MI.

PRINCIPAL MERIDIAN

FOURTH

Livingston

M I F F L I N

GRANT CO
IOWA CO

NORTH WESTERN

Waterloo Sch

Gravel Pit

Zion Cem

Hazel Dell Sch

BM 1145

BM 1164

10

20

21

1182

1190

1176

1139

1154

1163

1174

1150

1144

1109

1166

1148

1134

1135

1131

1145

BM 1145

1164

1103

1154

1093

1116

1128

1141

1066

1129

1100

1110

1090

1105

1102

1153

1127

1060

1046

1061

1022

1161

1145

1087

1093

1135

1112

1099

1085

1132

1161

1140

1116

1090

1024