

Village of Barneveld
Iowa County
October 26, 1976

*East Branch Pecatonica River (Adamsville Branch) - Surface area = 68.9 acres, Length = 21.6 miles, Gradient = 16.6 feet per mile.

The East Branch Pecatonica River was the second largest watershed of any stream which lies wholly within the county. It is entirely navigable for nearly its whole length. Although it is considered as a warm-water stream, many of its principal tributaries are spring fed. Major tributaries entering within Iowa County are the Dodge Branch, Conley-Smith Creek (Ridgeway Branch), Williams Creek and Olson Creek. The Blue Mounds Branch enters in Lafayette County, just over the Iowa County line.

Discharge records show that it floods almost every year in early spring. The combination of hilly terrain and 85 percent of the watershed being farmed, accounts for the rapid runoff of precipitation.

The streams fishery is composed of trout and smallmouth bass, with trout living primarily in the upper and middle portions and the smallmouth bass living in the middle and lower portions of the stream.

Barneveld Tributary

The Barneveld lagoons discharge to this intermittent tributary, which at the present time is dry, except for some effluent. This tributary enters the East Branch of the Pecatonica River at NW $\frac{1}{4}$ NE $\frac{1}{4}$, Section 15, T6N, R5E.

Recommendations

From the Barneveld lagoons downstream to the juncture with the East Branch of the Pecatonica River, the classification should be noncontinuous marginal surface waters. From this point and for the remainder of the East Branch of the Pecatonica River, the classification should be continuous fish and aquatic life.

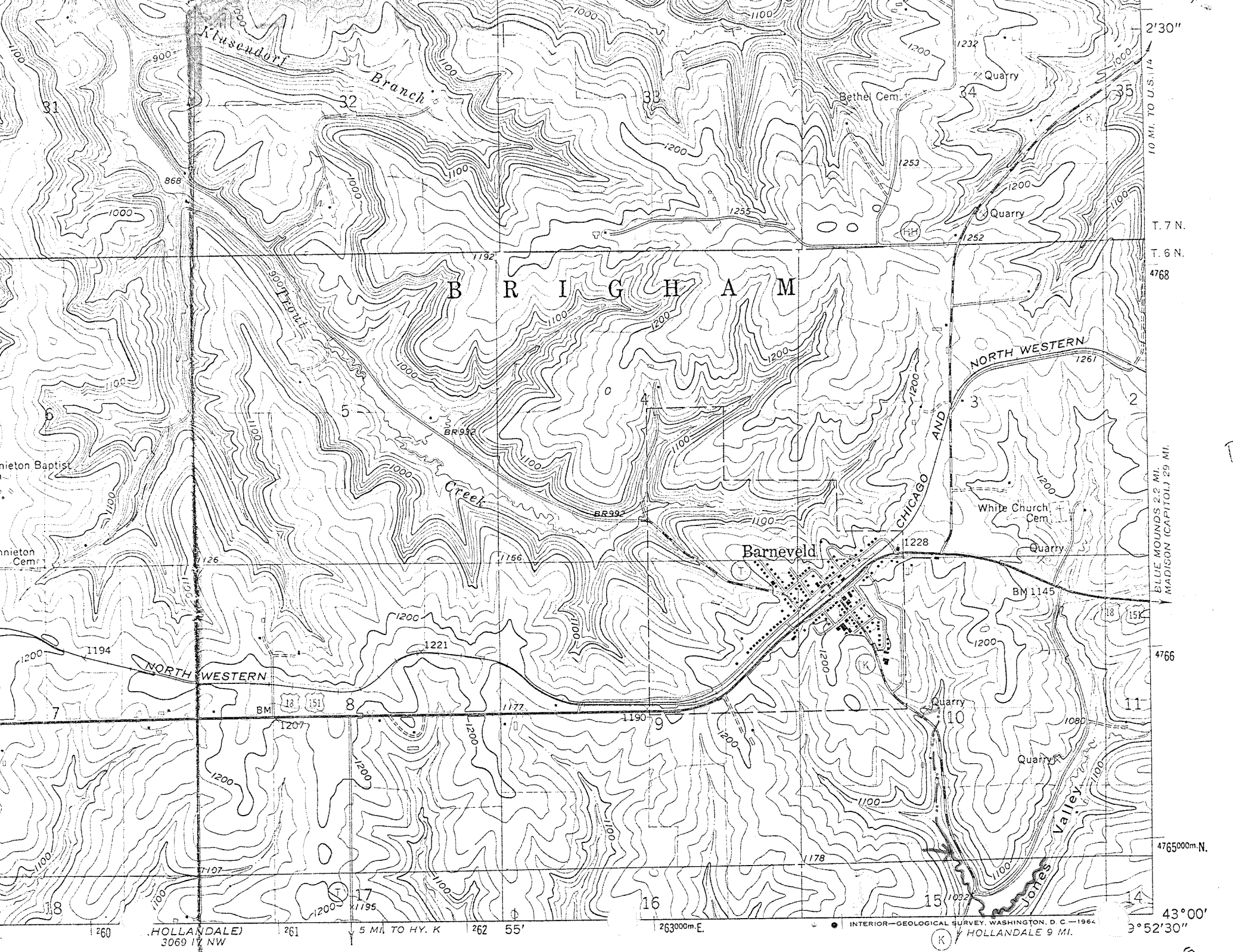
The above recommendations represent a concurrence of opinion of the stream classification team who are as follows:

Dennis Iverson	District Engineer
Gene Van Dyck	Area Fish Manager
Tom Bainbridge	District Biologist
Roger Schlessler	Natural Resources Technician

Submitted by,


Tom Bainbridge
Stream Classification Coordinator

TB:mad



Klusendorf Branch

B R I G H A M

Creek

Barneveld

NORTH WESTERN

CHICAGO AND

Valley Valley

(HOLLANDALE)
3069 1/4 NW

5 MI. TO HY. K

263000m.E.

INTERIOR- GEOLOGICAL SURVEY, WASHINGTON, D. C. - 1964
HOLLANDALE 9 MI.

43°00'
3°52'30"

2'30"
10 MI. TO U.S. 174
T. 7 N.
T. 6 N.
4768
BLUE MOUNDS 2.2 MI.
MADISON (CAPITOL) 29 MI.
4766
4765000m.N.

(BLU)

0.6 MI TO U.S. 18 262 55'

263

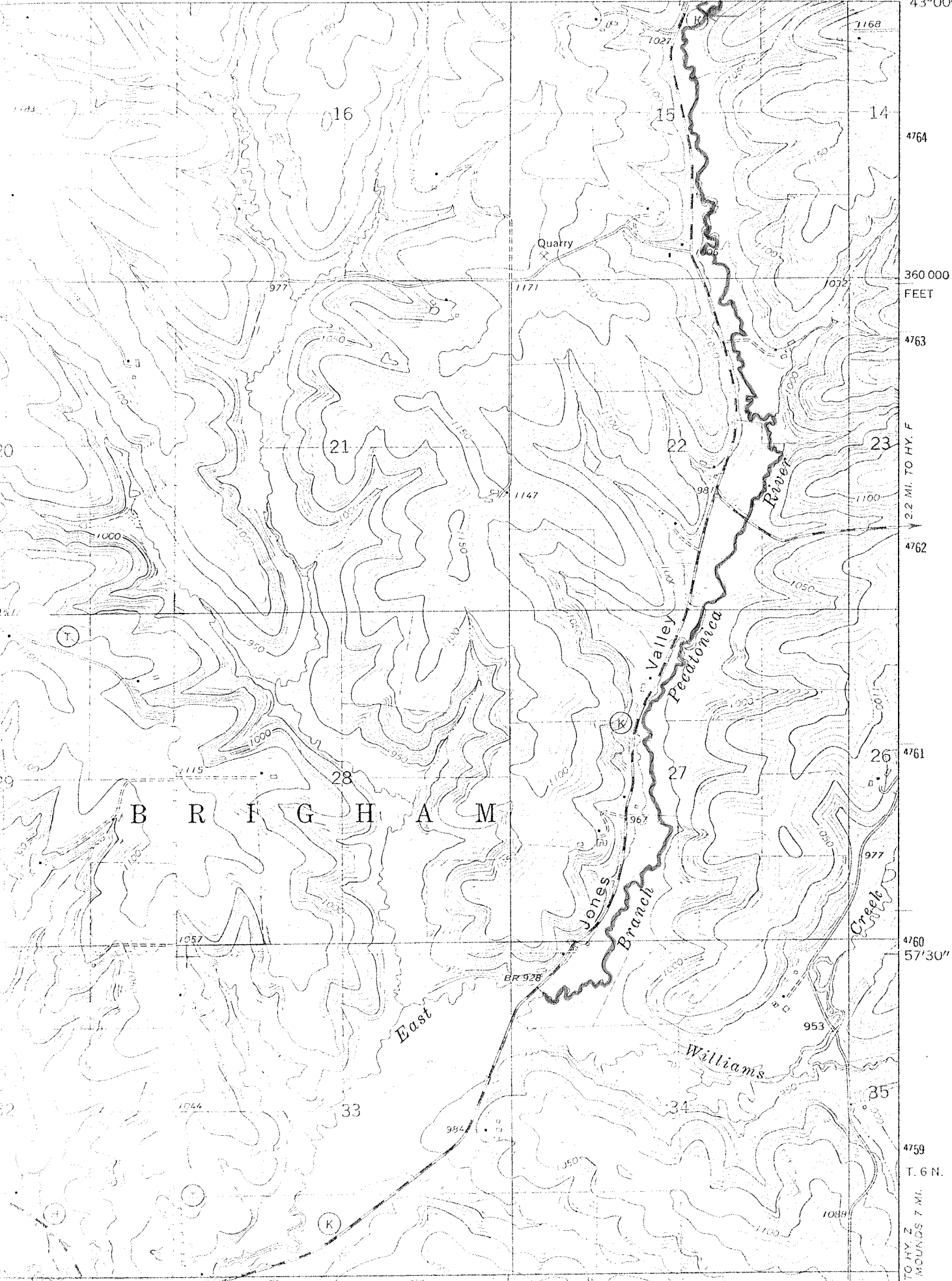
264

2030 000 FEET

BARNEVELD 1.1 MI.

89°52'30"

43°00'



4764

360 000
FEET

4763

2.2 MI. TO HY. F

4762

4761

4760
57'30"

4759

T. 6 N.

TO HY. Z

E. MOUNDS 7 MI.

B R I G H A M

16

15

14

21

22

23

28

27

26

33

34

35

Quarry

Pecos Valley
Pecos River

Jones Branch

Williams

East

Creek

BR 928

(K)

(T)

(H)

(C)