

Cobb Sewer Department
Iowa County

October 26, 1976

West Branch of the Pecatonica River (Caygill)

Surface area = 28.3 acres, Length = 20.5 miles, Gradient = 14.6 feet.

The West Branch of the Pecatonica River is a warmwater seepage stream which, although it does not have the largest base discharge, does have the largest watershed in the county. It begins on the vale of the cuesta (Military Ridge) of the Galena-Black River Uplands and flows southerly into Lafayette County where it joins the East Branch and the Pecatonica River proper is formed. Principle tributaries in Iowa County are Livingston Branch and Williams Creek. These contribute about 50 percent to its base flow in Iowa County. A stream system which begins in Iowa County but enters in Lafayette County is the Mineral Point Branch which drains about 98 square miles and has a base flow of about 8.7 cfs when it leaves the county. Heavy bank erosion is a common feature throughout its length. This is partly a result of the intensive use of the watershed lands for agricultural purposes. About 94 percent of the land is open land used mainly for crops and pasture. The principal sport fishery throughout the watershed is smallmouth bass which varies from common to abundant. Channel catfish are also found in the lower sections. Forage fishes are abundant and include the following species: bluntnose, fathead and stone-roller minnows; common, rosyface and bigmouth shiners; hornyhead and creek chubs; hog and white suckers; redbelly dace and johnny darters. Panfish that are known include orange-spotted sunfish, green sunfish and black bullheads. Aquatic game assets include muskrats throughout most of its length and some migratory waterfowl.

Recommendations

From the Cobb Sewage Treatment Plant outfall downstream to the confluence of a westerly unnamed tributary NE $\frac{1}{4}$, NW $\frac{1}{4}$, Section 2, T5N, R1E, the classification should be continuous surface waters not supporting a balanced aquatic community. From this point and for the remainder of the West Branch of the Pecatonica River the classification should be continuous fish and aquatic life.

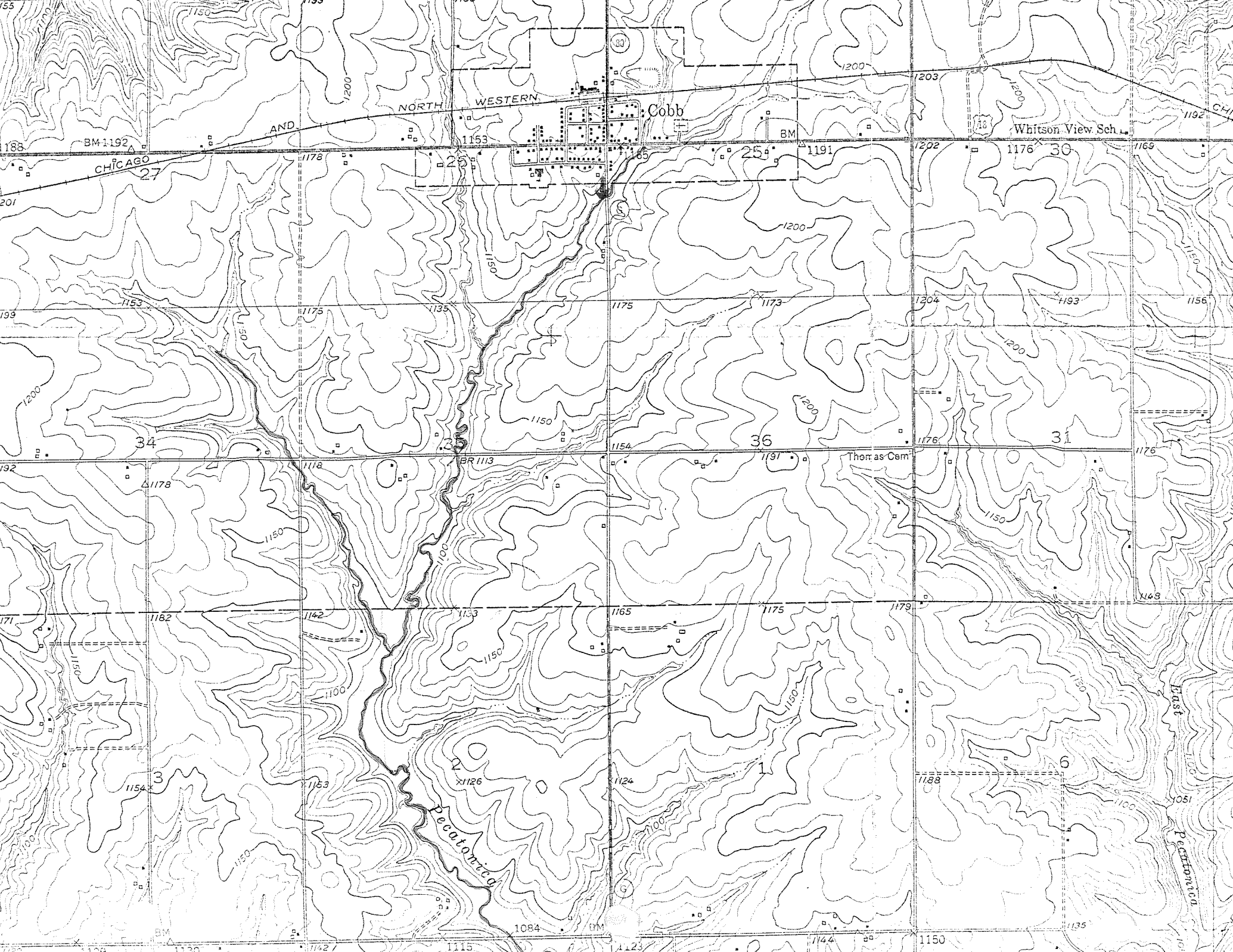
The above recommendations represent a concurrence of opinion of the stream classification team who are as follows:

Dennis Iverson, District Engineer
Gene Van Dyck, Area Fish Manager
Tom Bainbridge, District Biologist
Roger Schlessler, Natural Resources Technician

Respectfully submitted,


Tom Bainbridge
Stream Classification Coordinator

TB:cb



NORTH WESTERN

Cobb

Whitson View Sch.

Thomas Cem.

Chattahoochee

East Pecos River

CHICAGO 27

34

3

36

1

31

6

1084

1150

BM 1192

BM

BM

BM

BM

1130

1142

1150

1153

1115

1123

1144

1135

1182

1142

1133

1165

1175

1179

1154

1153

1126

1124

1150

1188

1178

1118

BR 1113

1154

1191

1176

1153

1175

1135

1175

1173

1204

BM 1192

1153

1165

1191

1176

1169

1201

1178

1153

1153

1191

1176

1169

1199

1175

1135

1175

1173

1204

1193

1156

1192

1118

BR 1113

1154

1191

1176

1176

1171

1182

1133

1165

1175

1179

1148

1154

1153

1126

1124

1150

1188

1051

1130

1142

1150

1153

1115

1123

1144

1135

BM 1192

BM

BM

BM

BM

1130

1142

1150

1153

1115

1123

1144

1135