

CORRESPONDENCE/MEMORANDUM

DATE: November 11, 2002

FILE REF:

TO: Laura Bub – WT/2, Pam Stubbe – Superior

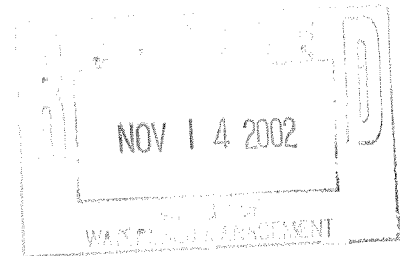
FROM: Craig Roesler - Hayward

SUBJECT: Anderson SD – Whitecap Mountain: Use Designation of Receiving Waters

A June 13th, 1996 memo and map describing the above site is attached. Effluent from the Whitecap Mountain lagoons flows a distance of about 0.25 miles through a mix of woods and wooded wetland areas before reaching Alder Creek. There is no defined channel along this path, which does not normally conduct flow except during lagoon discharges or runoff events. There is no potential for fish use and no significant use by aquatic macroinvertebrates.

Limited aquatic life (LAL) or very tolerant aquatic life (VTAL) is the appropriate use designation for this flowpath for the following reason:

- Natural, ephemeral, intermittent or low flow conditions or water levels prevent the attainment of a diverse fish and aquatic life community.



CORRESPONDENCE/MEMORANDUM

DATE: June 13, 1996

FILE REF: 3320

TO: File

FROM: Craig Roesler

SUBJECT: Anderson SD - Whitecap Mountain: Effluent Flow Path From Wastewater Treatment Lagoons

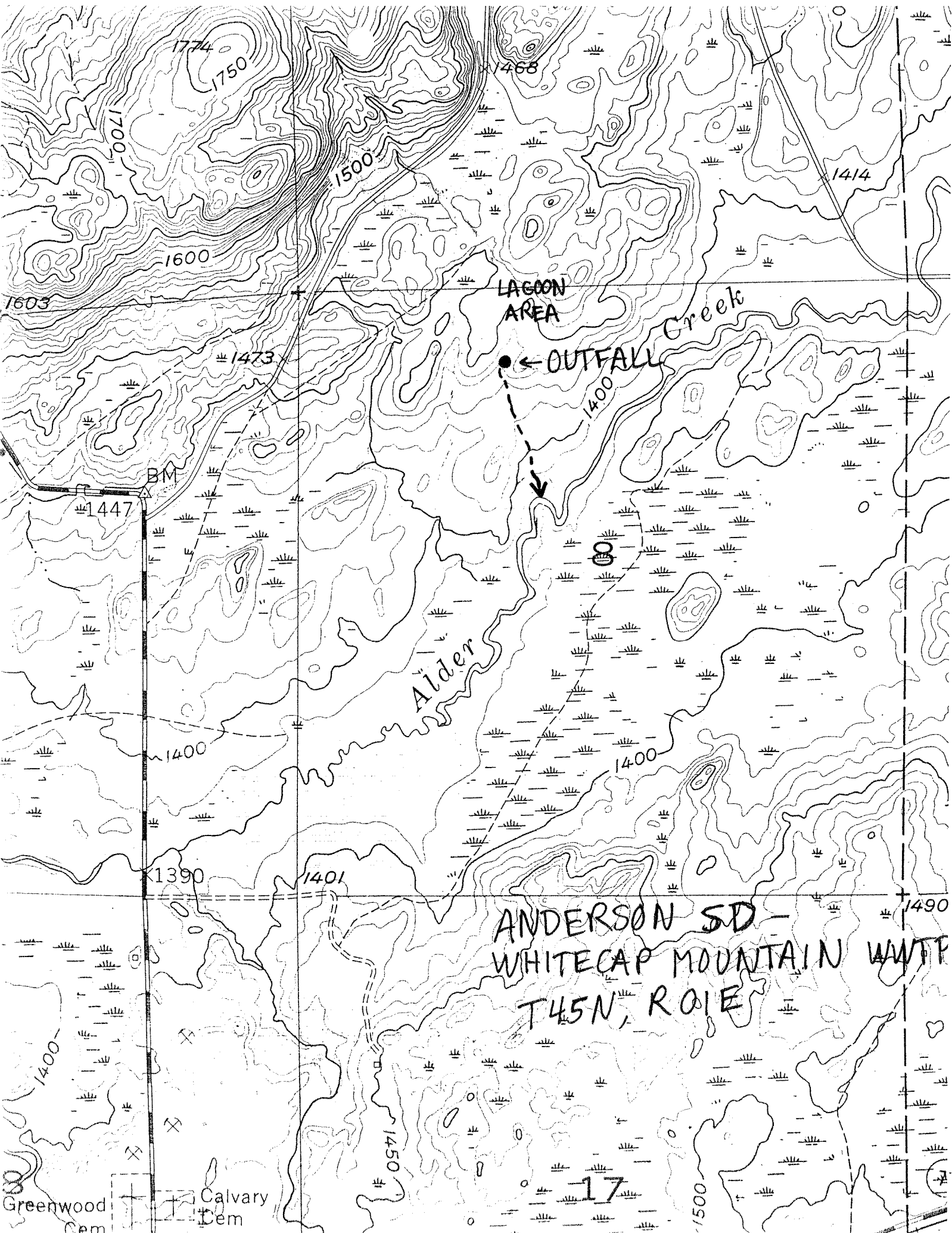
DRAFT

I visited the above facility on 5-31-96 to determine the location and characteristics of the effluent flow path. The lagoon outfall is located in the NE 1/4, NW 1/4, S08, T45N, R01E (46 23' 52"N, 90 23' 46"W). It is beneath a pile of rock about 180 ft. SW of the outlet control structures. Discharge had occurred earlier in spring. There was some slight channel scouring near the discharge point, but no further channel development along the flow path. The flow path passes through a mix of wooded and wooded wetland areas. The path was very dispersed along much of its course. Wetland becomes dominant near Alder Creek. The flow path reaches Alder Creek in the SE 1/4, NW 1/4, S08, T45N, R01E (46 23' 40"N, 90 23' 42"W). A map of the site is attached. A new road near the lagoons is not shown on the map.

There was no flow occurring along the flow path prior to Alder Creek. Effluent discharges and small amounts of runoff appear to be the extent of flows. There is no potential for fish use and no significant use by aquatic macroinvertebrates.

The recommended classification for the effluent flow path between the outfall and Alder Creek is limited aquatic life (LAL).

Alder Creek is a class III trout stream at this location and is classified as a cold water community.



1774

1750

1468

1700

1500

1414

1600

1603

LAGOON AREA

Creek

← OUTFALL

1473

1400

BM

1447

Alder

1400

1400

1400

1390

1401

1490

ANDERSON SD -
WHITECAP MOUNTAIN WATP
T45N, R01E

17

1450

1500

Greenwood Cem

Calvary Cem

CORRESPONDENCE/MEMORANDUM

DATE: June 13, 1996

FILE REF: 3320

TO: File

FROM: Craig Roesler

DRAFT

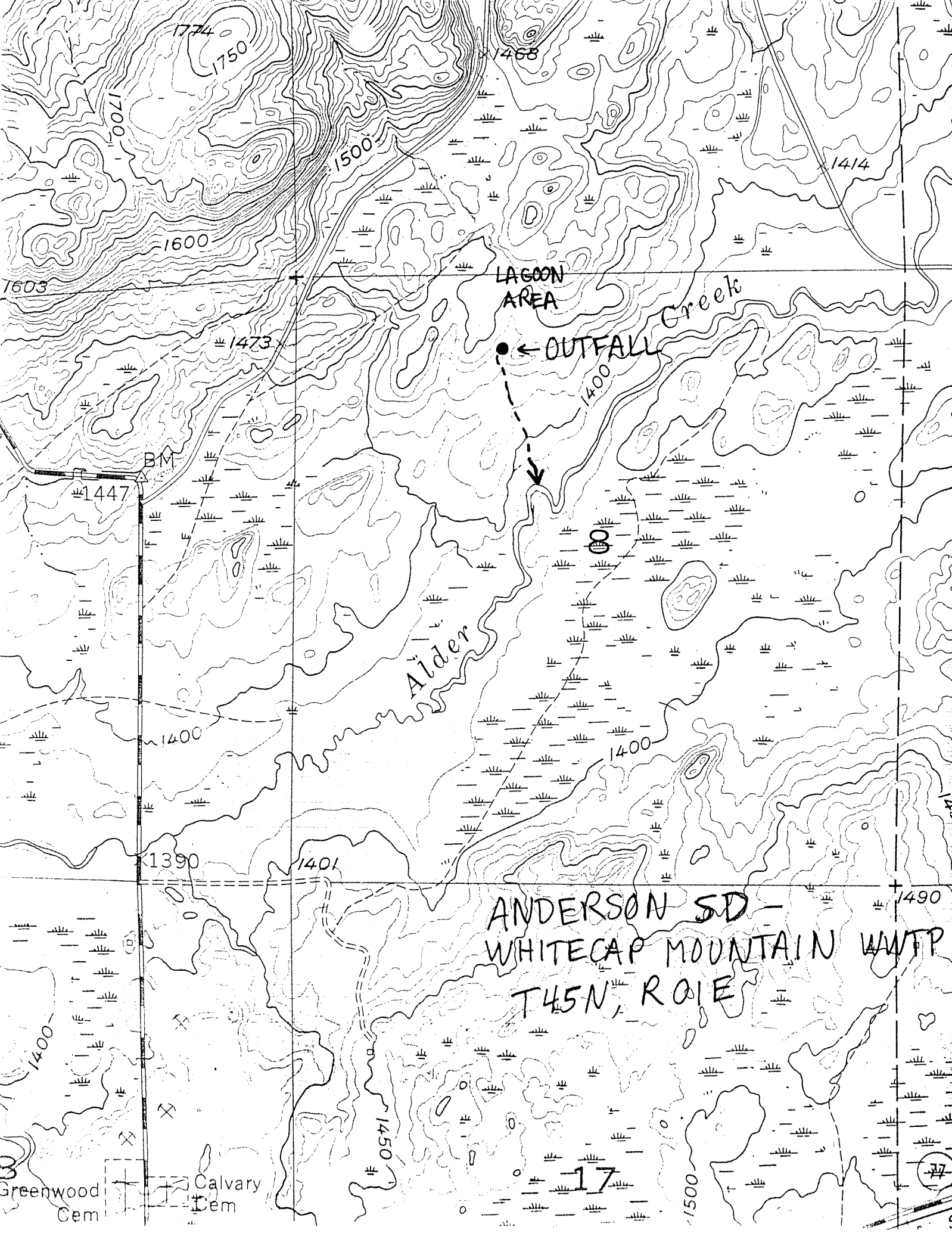
SUBJECT: Anderson SD - Whitecap Mountain: Effluent Flow Path From Wastewater Treatment Lagoons

I visited the above facility on 5-31-96 to determine the location and characteristics of the effluent flow path. The lagoon outfall is located in the NE 1/4, NW 1/4, S08, T45N, R01E (46 23' 52"N, 90 23' 46"W). It is beneath a pile of rock about 180 ft. SW of the outlet control structures. Discharge had occurred earlier in spring. There was some slight channel scouring near the discharge point, but no further channel development along the flow path. The flow path passes through a mix of wooded and wooded wetland areas. The path was very dispersed along much of its course. Wetland becomes dominant near Alder Creek. The flow path reaches Alder Creek in the SE 1/4, NW 1/4, S08, T45N, R01E (46 23' 40"N, 90 23' 42"W). A map of the site is attached. A new road near the lagoons is not shown on the map.

There was no flow occurring along the flow path prior to Alder Creek. Effluent discharges and small amounts of runoff appear to be the extent of flows. There is no potential for fish use and no significant use by aquatic macroinvertebrates.

The recommended classification for the effluent flow path between the outfall and Alder Creek is limited aquatic life (LAL).

Alder Creek is a class III trout stream at this location and is classified as a cold water community.



1774
1750

1468

1414

1700

1500

1600

1603

LAGOON
AREA

Creek

1473

← OUTFALL

BM

1447

Alder

1400

1400

1390

1401

ANDERSON SD -
WHITECAP MOUNTAIN WWTP
T45N, R01E

1490

Greenwood
Cem

Calvary
Cem

17

1450

1500