

Menasha Corporation

Neenah Container Division, Winnebago County

Wastewater Receiving Stream Classification

Survey Date: 8-8-75

The Menasha Corporation discharges from their treatment plant into a ditch constructed to convey the effluent and storm runoff to the Neenah slough. The effluent channel travels about 1,000 feet before discharging to the Neenah slough. The slough immediately above the effluent discharges is about 20 feet wide and with a water depth of about 2-4 inches. It appears that most of the water is backwater from the effluent discharge. The stream bed is very mucky and has many cattails growing in it. The flow at this point is normally less than .1 CFS. Below the effluent discharge there is a definite stream channel and flowing water but this is caused by the Menasha Corporation discharge. The stream width is about 2 feet and water depth 2 to 3 inches. The stream varies greatly in width and depth until it travels approximately 500 feet below the Highway 41 bridge. At this location the stream becomes very wide (150 feet) and 1/2 to 2 feet deep. From this point on down to Little Lake Butte des Morts the slough has a fair amount of water in it year round and appears to be affected by the level Little Lake Butte des Morts. In this stretch of stream there is algae or many rocks and Sagittaria species along the banks. The slough receives significant cooling water discharges from numerous industries in the last mile and a half down to Little Lake Butte des Morts. The slough is a valuable spawning area for northern pike, perch and white bass in the Spring.

Recommendations

The effluent channel below the Menasha Corporation treatment plant should be classified as an effluent ditch. The slough from the effluent ditch down to 500 feet below the Highway 41 bridge should be classified as non-continuous, intermediate fish and aquatic life. From 500 feet below the 41 bridge down to Little Lake Butte des Morts the slough should be classified continuous, fish and aquatic life use.

Based on a waste assimilation survey conducted in the fall of 1974, I feel that the discharge from the Menasha Corporation will not have a significant affect on the slough below the Highway 41 bridge. (Photo 5, 6, 7, 8 and 9)

David A. Hildreth

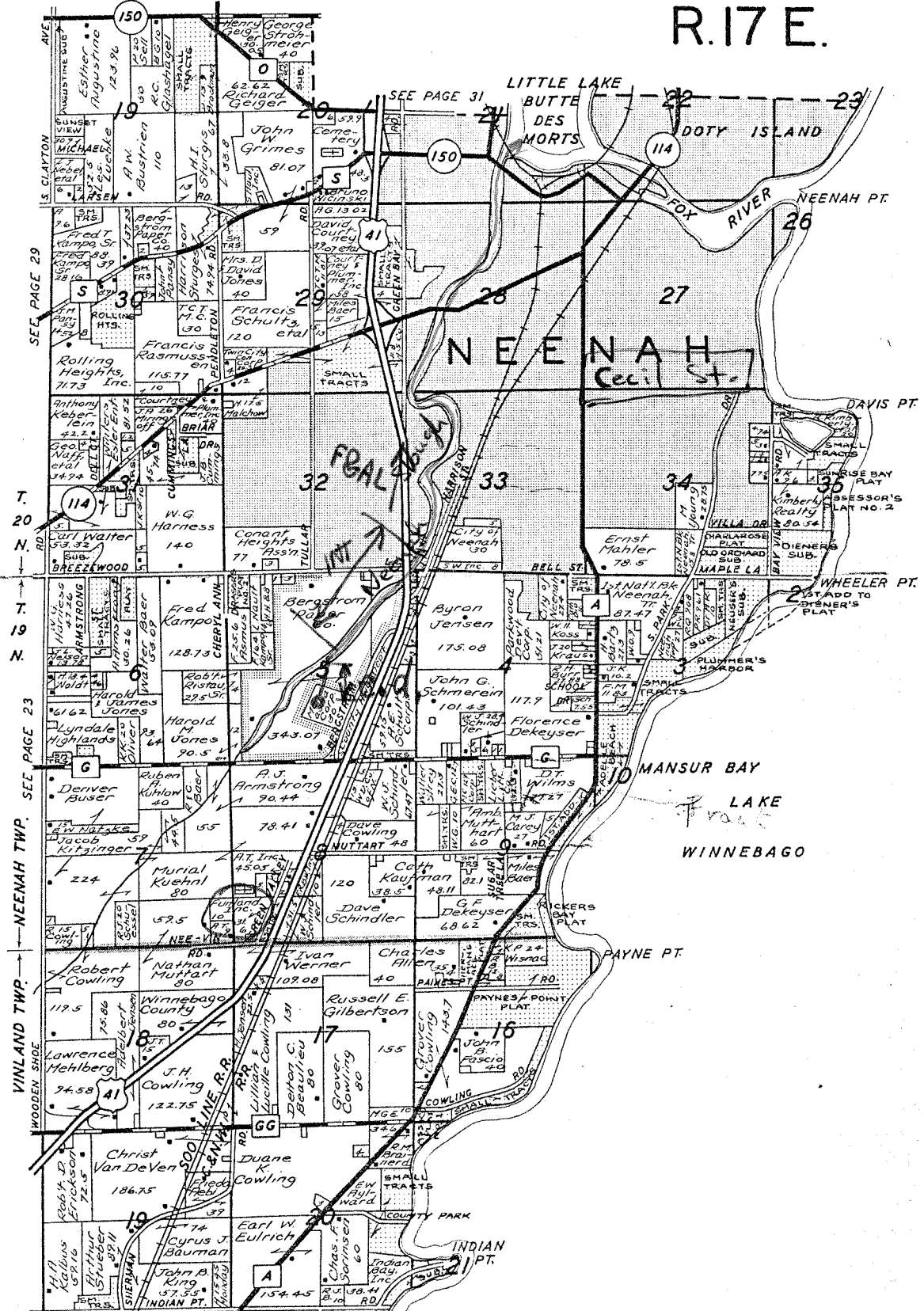
David A. Hildreth
District Engineer

Dennis C. Weisensel

Dennis C. Weisensel
District Biologist

NEENAH EAST PART VINLAND

T. 19-20 N. R. 17 E.



Menasha Corporation



Neenah Slough looking upstream with effluent ditch on the left.



Neenah Slough looking downstream from about 10 feet below the effluent ditch discharge.

Menasha Corporation



Neenah Slough about 600 feet below Hwy 41 bridge. Picture taken looking upstream.



Neenah Slough looking downstream from Cecil Street bridge in Neenah.