

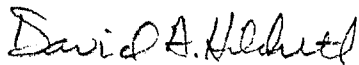
STREAM CLASSIFICATION

Survey Date: May 11, 1976

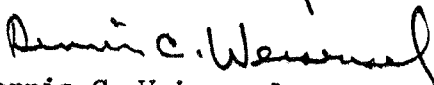
Winchester S. D. - Winnebago County

The S. D. does not have a WWTP at this time, but if one is built it might discharge to a tributary to the Rat River which flows northwest of Winchester to the Rat River about 1½ miles away. The tributary is an agricultural drainage ditch which has a USGS estimated Q7,10 of 0.0 cfs.

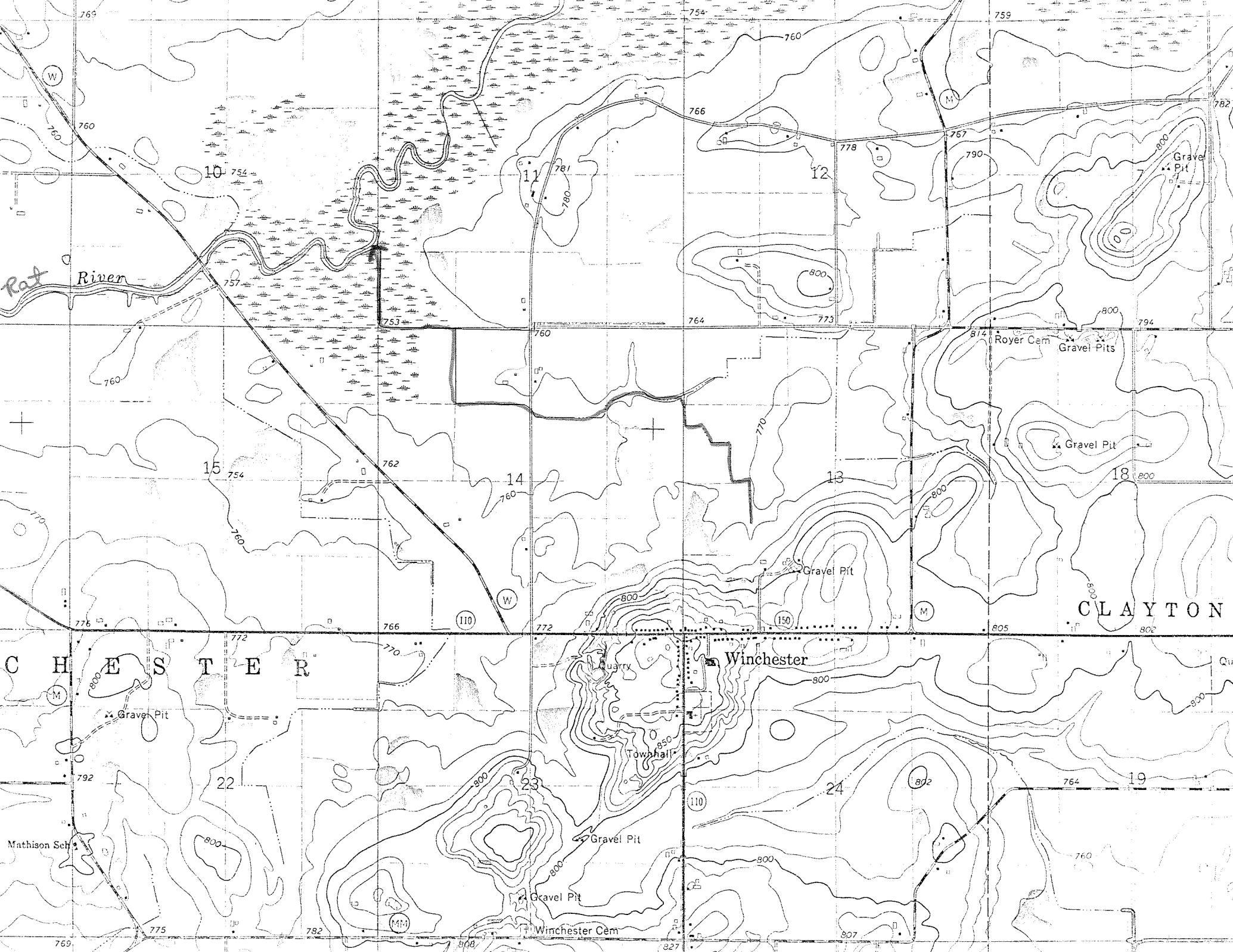
Recommendations: The tributary to the Rat River should be classified as non-continuous, marginal use from Winchester down to the Rat River. The Rat River is continuous, fish and aquatic life classification.



David A. Hildreth  
District Engineer



Dennis C. Weisensel  
District Biologist



Rat River

10

11

12

15

14

13

18

CHESTER

CLAYTON

Winchester

Quarry

Townhall

Gravel Pit

Gravel Pit

Winchester Cem

Royer Cem

Gravel Pits

Gravel Pit

Gravel Pit

Gravel Pit

Mathison Sch

792

22

23

24

19

769

775

782

808

827

807

760

760

757

753

760

764

773

790

800

794

754

762

760

770

800

800

776

772

766

772

150

805

802

792

22

23

24

19

769

775

782

808

827

807

760

760

757

753

760

764

773

790

800

794

754

762

760

770

800

800

776

772

766

772

150

805

802

792

22

23

24

19

769

775

782

808

827

807

760

760

757

753

760

764

773

790

800

794

754

762

760

770

800

800

776

772

766

772

150

805

802

792

22

23

24

19

769

775

782

808

827

807

760

760

757

753

760

764

773

790

800

794

754

762

760

770

800

800

776

772

766

772

150

805

802

792

22

23

24

19

769

775

782

808

827

807

760

760

757

753

760

764

773

790

800

794

754

762

760

770

800

800

776

772

766

772

150

805

802

792

22

23

24

19

769

775

782

808

827

807

760

760

757

753

760

764

773

790

800

794

754

762

760

770

800

800

776

772

766

772

150

805

802

792

22

23

24

19

769

775

782

808

827

807

760

760

757

753

760

764

773

790

800

794

754

762

760

770

800

800

776

772

766

772

150

805

802

792

22

23

24

19

769

775

782

808

827

807

760

760

757

753

760

764

773

790

800

794

754

762

760

770

800

800

776

772

766

772

150

805

802

792

22

23

24

19

769

775

782

808

827

807

760

760

757

753

760

764

773

790

800

794

754

762

760

770

800

800

776

772

766

772

150

805

802

792

22

23

24

19

769

775

782

808

827

807

760

760