

DATE: February 7, 2005

FILE REF: [Click [here](#) and type file ref.]

TO: File

FROM: Laura Bub

SUBJECT: Mill Creek Trib & Milladore STP

A Mill Creek tributary from the Milladore STP was previously recommended for designation as LAL in NR 104. Mark Hazuga (WCR/Wausau) has indicated that there is not adequate data to support this recommendation. Because of this, the Mill Creek tributary designation should NOT be added to NR 104 at this time. West Central Region will plan to conduct additional field work at this site in the future.

Region WCR County Wood Report Date 9/1977 Classification LAL

Water Body: Mill Creek, Trib to

Discharger: Miladore STP

If stream is classified as Limited Forage Fish (LFF) or Limited Aquatic Life (LAL), check any of the following Use Attainability Analysis factors that are identified in the classification report:

Naturally occurring pollutant concentrations prevent the attainment of use

Natural, ephemeral, intermittent or low flow conditions or water levels prevent the attainment of the use, unless these conditions may be compensated for by the discharge of sufficient volume of effluent discharges without violating State water conservation requirements to enable uses to be met

Human caused conditions or sources of pollution prevent the attainment of the use and cannot be remedied or would cause more environmental damage to correct than to leave in place

Dams, diversions or other types of hydrologic modifications preclude the attainment of the use, and it is not feasible to restore the water body to its original condition or operate such modification in a way that would result in the attainment of the use

Physical conditions related to the natural features of the water body, such as the lack of a proper substrate, cover, flow, depth, pools, riffles, and the like, unrelated to water quality, preclude attainment of aquatic life protection uses

Controls more stringent than those required by sections 301(b) and 306 of the Act would result in substantial and widespread economic and social impact

Supporting Evidence in the report (include comments on how complete/thorough data is)

Biological Data (fish/invert)

Chemical Data (temp, D.O., etc.)

Physical Data (flow, depth, etc.)

Habitat Description

Site Description (Map)

Other: photos

Historical Reports in file:

9/77 - Bill Jaeger

10/70 - Ken Schreiber

Additional Comments/How to improve report:

- what is limiting factor of this stream?

- need data to support class'n.

- check w/ region on this class'n.

Milladore - Wood County

Wastewater Receiving Stream Classification

The Milladore sewage treatment plant consists of a two-cell lagoon that discharges through a 3/4-mile long pipe to an unnamed tributary to Mill Creek. Above the outfall, the Milladore tributary has a drainage area of 2.7 miles and a $Q_{7,10}$ of zero. Below the outfall, the tributary flows about 1 1/4 miles before it meets Mill Creek. In this distance it picks up an additional square mile of drainage area. This stream is dry throughout much of the year, even with the STP discharge. The watershed is mostly agricultural land with some woodland along the streambank and in the lowlands. Part of the streambank is pasture.

Inspection of the stream during September found some minnows, snails and midges present. That was a period of considerable rainfall, and I believe the minnows that were found had moved in from Mill Creek during high water and are not found there during most of the year. I think the snails and midges are more indicative of the normal aquatic community and indicate that it is of low quality.

Recommendation: The Milladore tributary should have the noncontinuous hydrologic classification and the marginal water quality classification for its entire length.

Survey dates: 9/13/77, 9/22/77

Surveyed by: Jack Zimmermann - Area Fish Manager
Joe Keena - Fish Management Technician
Robert Derksen - District Engineer
Bill Jaeger - Water Pollution Biologist

Report Prepared by: Bill Jaeger

Department of Natural Resources

INTRA-DEPARTMENT

MEMORANDUM

Wisconsin Rapids...
Station

Date..... October 8, 1976

IN REPLY REFER TO: 3410

TO: File

FROM: Kenneth W. Schreiber

SUBJECT: Unnamed Tributary Of Mill Creek With Outfall Of Milladore
Sewage Treatment Facility At Source

On September 21, 1976 the writer conducted a survey of the subject area.

At bridge on County Trunk "N" the streambed was completely dry. Small pools of standing water were noted at bridge upstream from "N" and at County "S" bridge. No flowing water was present at any of the sites examined.

Algae growths and minnows were noted in some of the pools.

Kenneth Schreiber
Kenneth W. Schreiber

KWS:dls

NOTED:

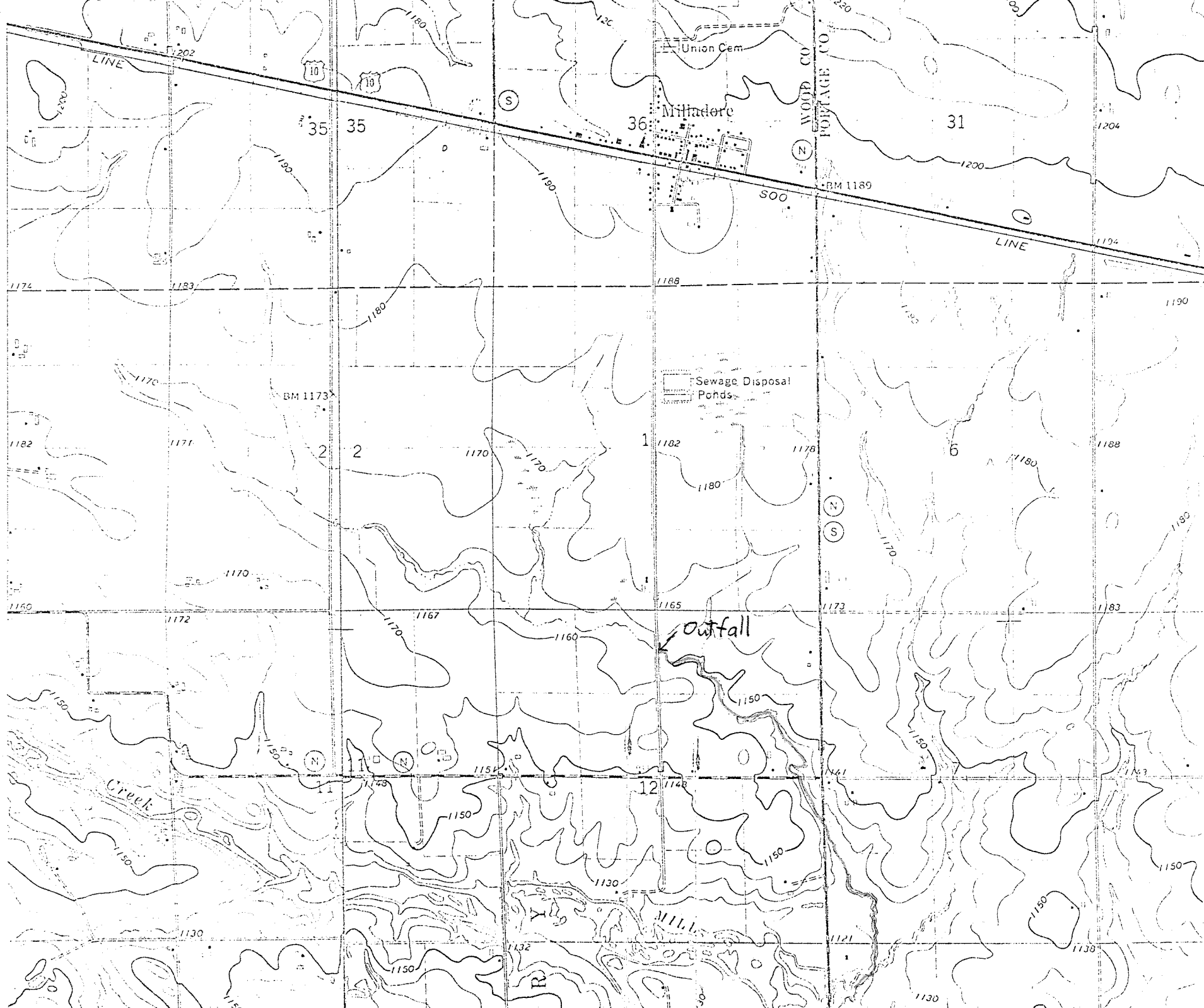
Date



Milladore tributary just above lagoon outfall.



Milladore tributary just above CTH "S".



Union Cem

Milladore

Sewage Disposal Ponds

LINE

LINE

outfall

Creek

WOOD CO
PORTAGE CO

35 35

36

31

2 2

1

6

11

12

1202

1204

BM 1173

BM 1189

1182

1171

1170

1170

1182

1178

1188

1150

1172

1170

1167

1160

1165

1172

1183

1150

1150

1150

1130

1150

1150

1130

1150

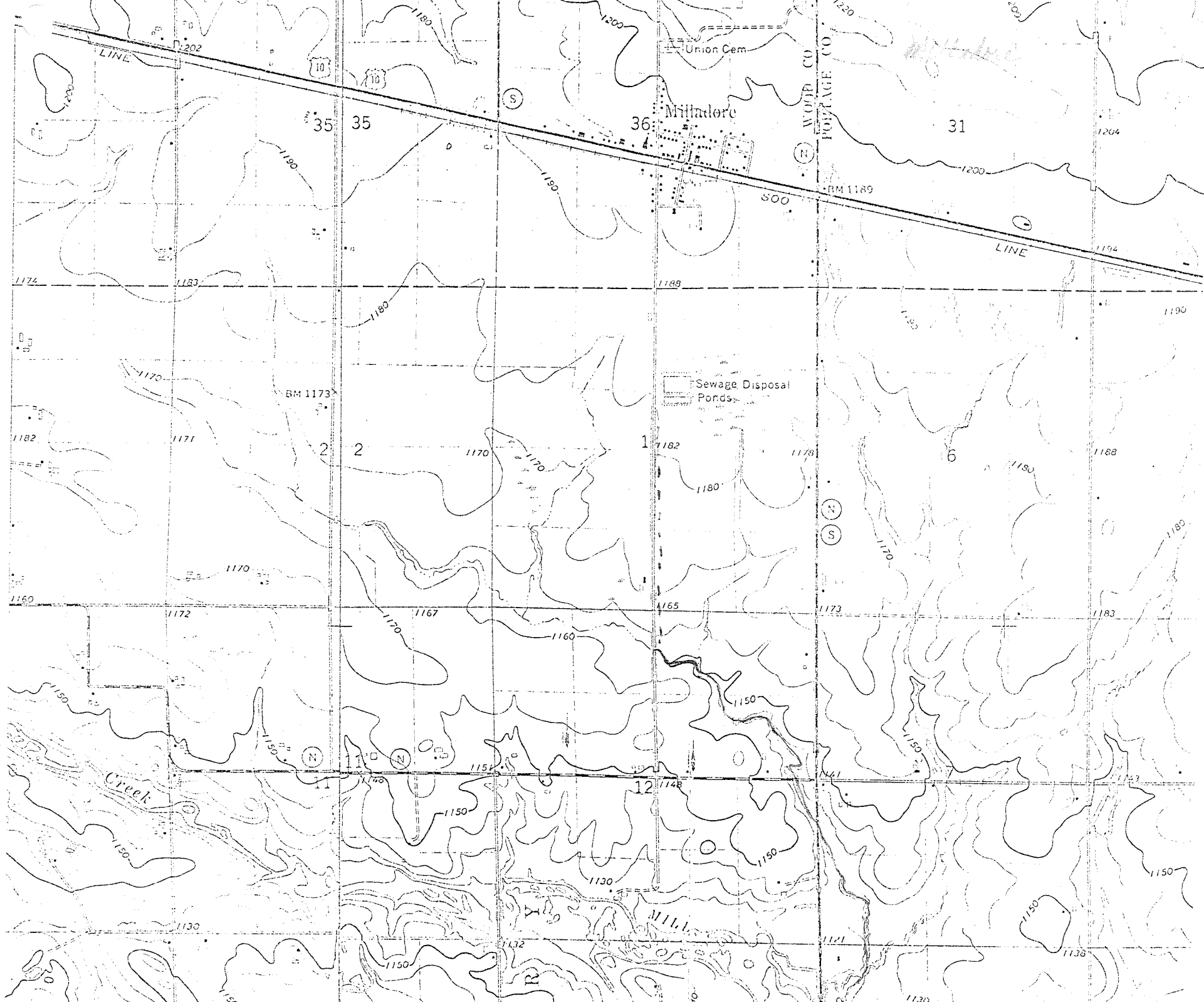
1132

1121

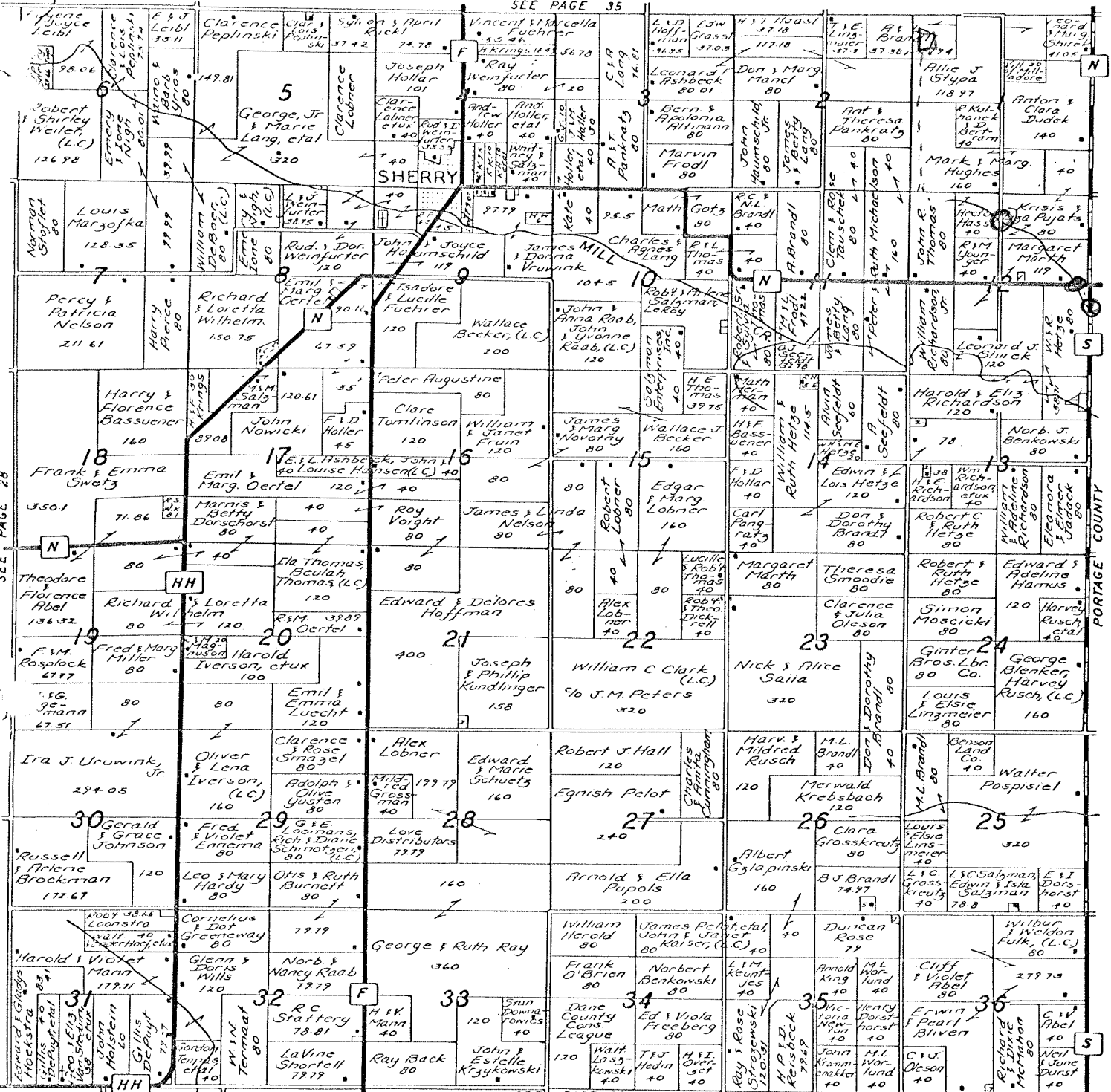
1150

1138

1130



SEE PAGE 35



SEE PAGE 28

SEE PAGE 23