

Department of Natural Resources

INTRA-DEPARTMENT

MEMORANDUM

DNR NOV 22 1976

..... Spooner

Station

Date..... November 17, 1976

IN REPLY REFER TO: 3200

TO: Anthony S. Earl
FROM: L. G. Hansen
SUBJECT: Surface Water Classification
(NR 104) - Radisson, Sawyer County

The Village of Radisson, located in south central Sawyer County, discharges treated wastewater to an alder swamp. The treatment facility consists of a wet well containing a comminuter and bar screens, an aeration tank, a settling tank, and a seepage pond. The seepage pond has apparently sealed, because of the introduction of sludge, and is effectively a polishing pond. There is a continuous discharge to the alder swamp adjacent to the facility.

A southerly drainage pattern through the alder swamp terminates in a landlocked marsh south of Radisson and east of the Couderay River. There is no apparent surface flow, from this marsh, to either the Couderay or Chippewa Rivers.

A map and photographs are attached.

RECOMMENDATION

The "wetlands" (NR 104.02(1)(c)), receiving treated effluent from Radisson, shall be classified as "marginal surface waters" (NR 104.02(3)(b)).

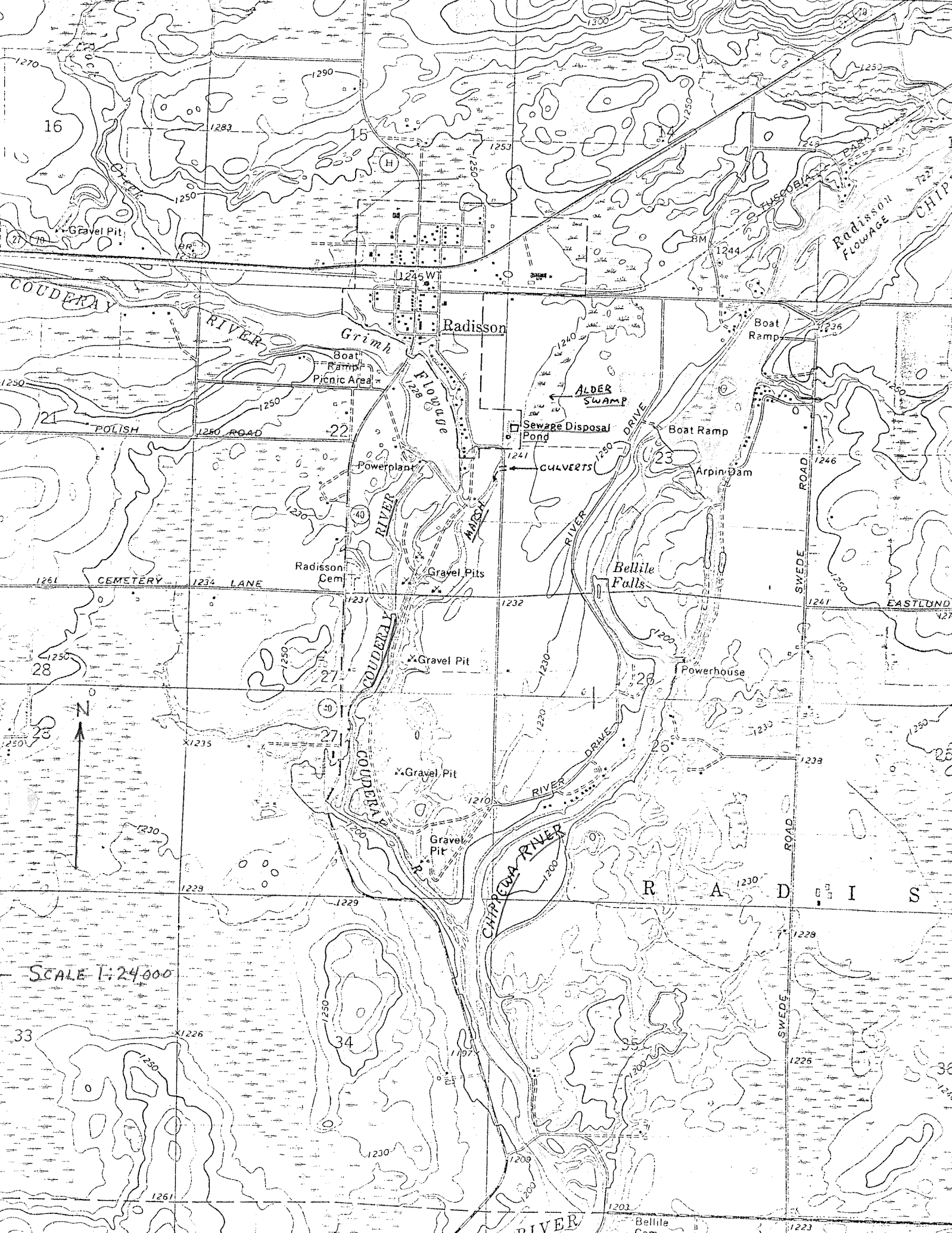
By Ted R. Smith
Ted R. Smith

TRS:mm

Attachments

NOTED:

Date



16

15

Gravel Pit

Radisson

Grimh

Boat Ramp
Picnic Area

ALDER SWAMP

Sewage Disposal Pond

Boat Ramp

Powerplant

Arpin Dam

POLISH ROAD

COUDERAY RIVER

COUDERAY RIVER

Bellile Falls

Radisson Cem

Gravel Pits

Gravel Pit

Powerhouse

Gravel Pit

Gravel Pit

CHIPWEYAN RIVER

R A D I S S

SCALE 1:24,000

33

34

36

COUDERAY RIVER

Bellile Cem

RADISSON



RADISSON STP



EFFLUENT FLOW TO WETLANDS