



State of Wisconsin \ DEPARTMENT OF NATURAL RESOURCES

Scott Walker, Governor
Cathy Step, Secretary

101 S. Webster St.
Box 7921
Madison, Wisconsin 53707-7921
Telephone 608-266-2621
FAX 608-267-3579
TTY Access via relay - 711

December 22, 2011

DNR File No. BD-0003

Mr. Michael J. Laue
MSA Professional Services
201 Corporate Drive
Beaver Dam, WI 53916-3071

SUBJECT: Amendment to the City of Beaver Dam
Sanitary Sewer Service Area Plan

Dear Mr. Laue:

We have completed our review of the subject amendment request which was originally submitted to the Wisconsin Department of Natural Resources (WDNR) on October 28, 2011, by Michael J. Laue, P.E., on behalf of the City of Beaver Dam Operations Committee. The submittal steps are consistent with the plan amendment procedures as outlined in the Sanitary Sewer Service Area Plan for the City of Beaver Dam, Dodge County, Wisconsin (July 18, 2001) and approved on August 8, 2001. The WDNR hereby approves this amendment.

The proposed amendment area consists of approximately 196 acres located along the west side of USH 151 north of the CTH B interchange and Kellom Road. The property is contained within the NE ¼ of Section 21 and the NW ¼ and NE ¼ of Section 22, Town 12 North, Range 14 East, currently in the Town of Beaver Dam.

Since November 9, 2011, when the draft request was conditionally approved by the WDNR, no changes have been made to the amendment and the Township of Beaver Dam and the Dodge County Planning and Development Committee had no comments after a 30-day comment period. The Operations Committee held a public hearing on October 24, 2011 and then forwarded the amendment to the City of Beaver Dam. The amendment was approved by the Beaver Dam City Council on December 19, 2011 by Resolution No. 186-2011.

If you believe that you have a right to challenge this decision, you should know that the Wisconsin statutes, administrative rules and case law establish time periods within which requests to review Department decisions must be filed. To request a contested case hearing pursuant to section 227.42, Wis. Stats., you have 30 days after the decision is mailed, or otherwise served by the Department, to serve a petition for hearing on the Secretary of the Department of Natural Resources. All requests for contested case hearings must be made in accordance with section NR 2.05(5), Wis. Adm. Code, and served on the Secretary in accordance with section NR 2.03, Wis. Adm. Code. The filing of a request for a contested case hearing is not a prerequisite for judicial review and does not extend the time period for filing a petition for judicial review.

For judicial review of a decision pursuant to sections 227.52 and 227.53, Wis. Stats., you must file your petition with the appropriate circuit court and serve the petition on the Department within the prescribed time period. A petition for judicial review must name the Department of Natural Resources as the respondent.

Sincerely,



Thomas J. Muga, P.E., Chief
Wastewater Section
Bureau of Water Quality

cc:

Don Quarford, Director of Utilities, City of Beaver Dam, 205 S. Lincoln Ave,
Beaver Dam, WI 53916
Mr. Ritchie Piltz, Operations Committee/Engineering Coordinator, City of Beaver Dam,
205 S. Lincoln Avenue, Beaver Dam, WI 53916
Thomas Kennedy, Mayor, City of Beaver Dam, 205 S. Lincoln Ave, Beaver Dam,
WI 53916
Laura Bub – DNR – SCR – Fitchburg
Doris Thiele – DNR – SCR - Horicon
Fran Keally – DNR - WQ/3

LEGEND

- - - CORPORATE LIMITS (AFTER ANNEXATION)
- CURRENT LIMITS OF SEWER SERVICE AREA PLAN
- SEWER SERVICE PLAN AMENDMENT AREA

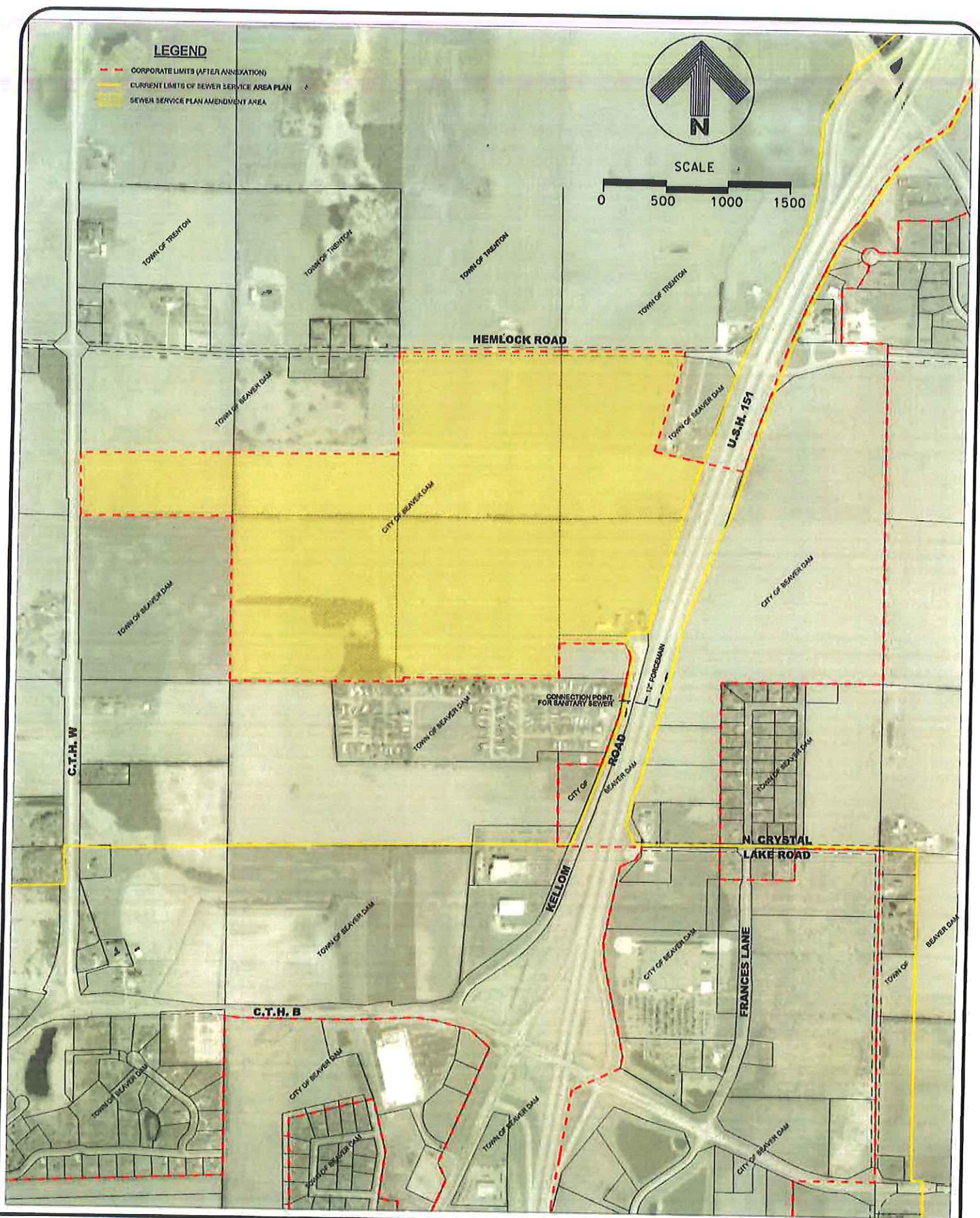
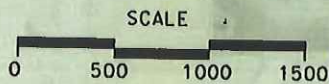


FIGURE 1
AREAWIDE AMENDMENT MAP - SEWER SERVICE AREA PLAN
 Showing Parts of the City & Town of Beaver Dam,
 Plus a Part of the Town of Trenton, Dodge County, WI

FILE NO.
 00218048

SHEET
 1 of 1



TRANSPORTATION • MUNICIPAL DEVELOPMENT • ENVIRONMENTAL
 201 Corporate Drive • Beaver Dam, WI 53916
 920-887-4242 1-800-552-4330 Fax: 920-887-4250
 © MSA PROFESSIONAL SERVICES

LEGEND

- - - CORPORATE LIMITS (AFTER ANNEXATION)
- CURRENT LIMITS OF SEWER SERVICE AREA PLAN
- SEWER SERVICE PLAN AMENDMENT AREA



SCALE

0 800 1600 2400

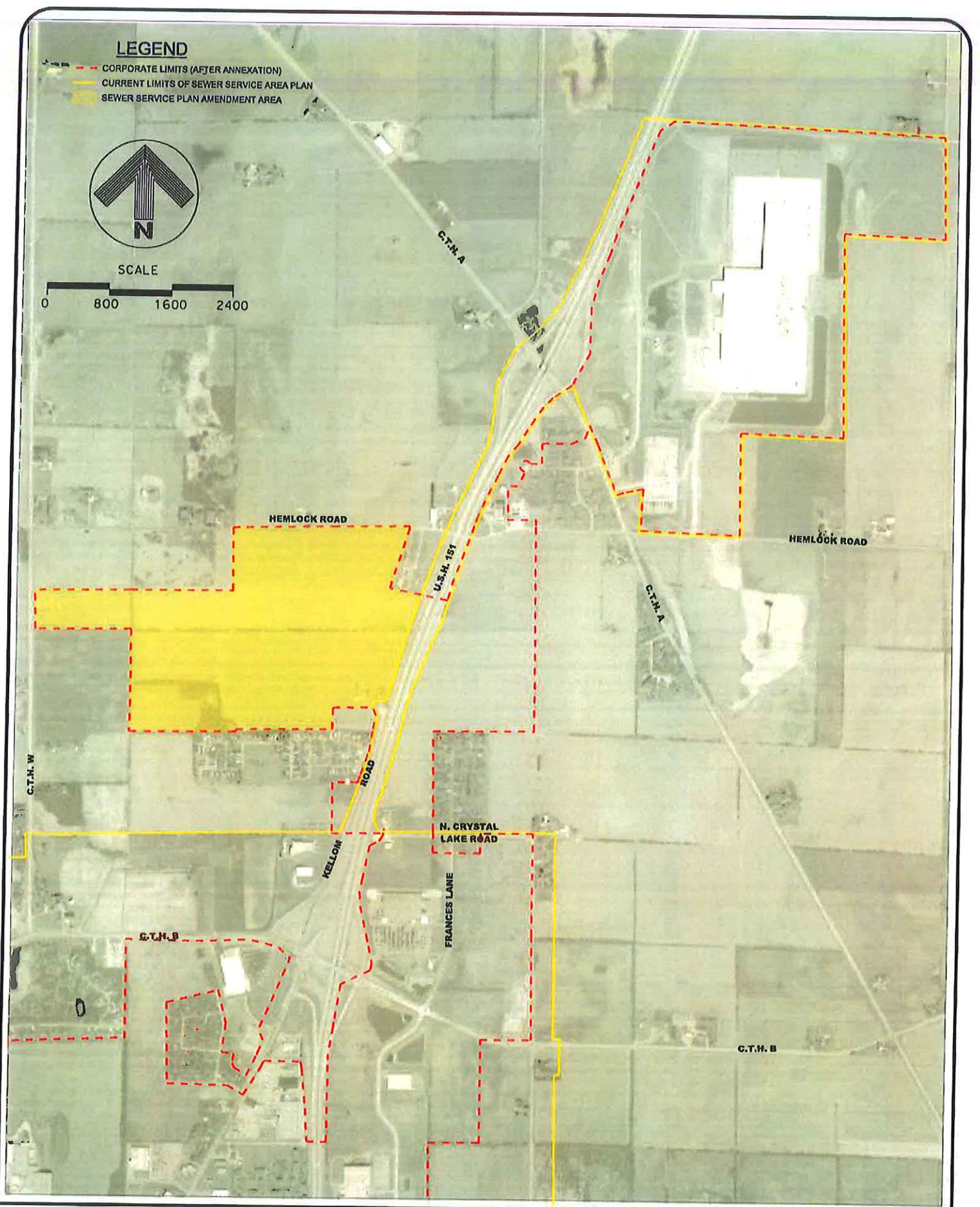


FIGURE 2
SEWER SERVICE AREA BOUNDARY - DISTRIBUTION CENTER SITE
Showing Parts of the City & Town of Beaver Dam,
Plus a Part of the Town of Trenton, Dodge County, WI

FILE NO.
00218048

SHEET
1 of 1



TRANSPORTATION • MUNICIPAL
DEVELOPMENT • ENVIRONMENTAL
201 Corporate Drive Beaver Dam, WI 53916
920-887-4242 1-800-552-6330 Fax: 920-887-4250
© MSA PROFESSIONAL SERVICES



Legend	
	Culverts
	Wetland Boundary
	Soil Plots
	Wetland Indicator Soils
	Project Area

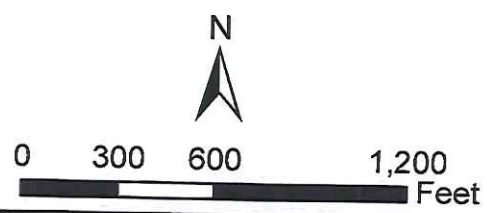


FIGURE 4 - Wetland Boundary Map	
North Side Business Park-USH 151 & Kellom Road Project	
Beaver Dam, Wisconsin	
DRAWN BY: MEG	DATE: August 8th, 2011
CHECKED BY: MG	SCALE: As Shown
JOB NO: 216008	P: 216008



Site Drawn: August 8th, 2011
 Revised By: MEG
 Station: 216008