



Wisconsin Public Service Corporation

700 North Adams Street

P.O. Box 19001

Green Bay, WI 54307-9001

December 13, 2010

FERC Project No's. 1999 & 2476

Ms. Kimberly D. Bose, Secretary
The Federal Energy Regulatory Commission
888 First St NE
Washington, DC 20426

Dear Secretary Bose:

2010 Noxious Plants Monitoring Reports, Wausau and Jersey Hydroelectric Project (FERC Project #1999 and Project #2476)

Per the Order Amending Purple Loosestrife Monitoring Plan issued October 23, 2008, Wisconsin Public Service Corporation (WPS) is to provide annual updates on the *Galerucella sp.* beetles (beetles) release sites and purple loosestrife populations for a period of six years, beginning in 2009 to the Wisconsin Department of Natural Resources (WDNR) and U.S. Fish & Wildlife Service (FWS) no later than October 31st of each year for the Wausau and Jersey Hydroelectric Projects and to the Federal Energy Regulatory Commission (FERC) with agency comments no later than December 15th of each year.

Jersey Hydroelectric Project

In 2010, WPS released beetles that were reared on potted purple loosestrife plants. A total of 2000 beetles were released on July 12, 2010.

A purple loosestrife survey was conducted at the Jersey Hydroelectric Project on July 28, 2010. The results of the survey indicated a total of 35 purple loosestrife colonies within the project boundary. Beetle feeding was reported at 28 colonies. Heavy feeding (colonies with 75% - 100% of plants with active beetle feeding) was noted at 13 of those colonies. The purple loosestrife survey figure and datasheet provide the location of the purple loosestrife, location of beetle feeding and the beetle release location. The figure and datasheet are located in Appendix A.

Wausau Hydroelectric Project

In 2010, WPS released beetles that were reared on potted purple loosestrife plants. Approximately 2000 beetles were released at the Wausau Hydroelectric Project on July 12, 2010.

WPS completed a purple loosestrife survey on July 28, 2010. The results of the survey indicated a total of 13 purple loosestrife colonies in the project boundary. Eleven of the colonies identified were small, comprising of five or less plants. Only two of the colonies consisted of greater than five plants. Beetle feeding was observed at five colonies. Beetle releases are planned to be completed on the northern end of the project in 2011 to target the newly identified loosestrife colonies.

Ms. Kimberly D. Bose, Secretary
December 13, 2010
Page 2 of 2

The purple loosestrife survey figure and datasheet provide the location of the purple loosestrife, location of beetle feeding and the beetle release location. The figure and datasheet are located in Appendix B.

Documentation of submittal of these results to the resource agencies is located in Appendix C. No comments were received from the resource agencies.

If you have any questions, please do not hesitate to call Darrin Johnson at (715) 345-7509.

Sincerely,

A handwritten signature in black ink, appearing to read "T. Jensky". The signature is stylized and cursive.

Terry P. Jensky,
Vice President-Energy Supply Operations

Enc.

cc: Ms. Carlisa Linton, FERC-DC
Mr. Gil Snyder, WPS
Mr. Bill Bloczynski, WPS
Mr. Shawn Puzen, IBS
Mr. Howard Giesler, WPS
Mr. Bruce Crocker, WPS
Ms. Joan Johaneck, WPS

APPENDIX A

2010 JERSEY HYDROELECTRIC PROJECT PURPLE LOOSESTRIFE SURVEY RESULTS

APPENDIX B

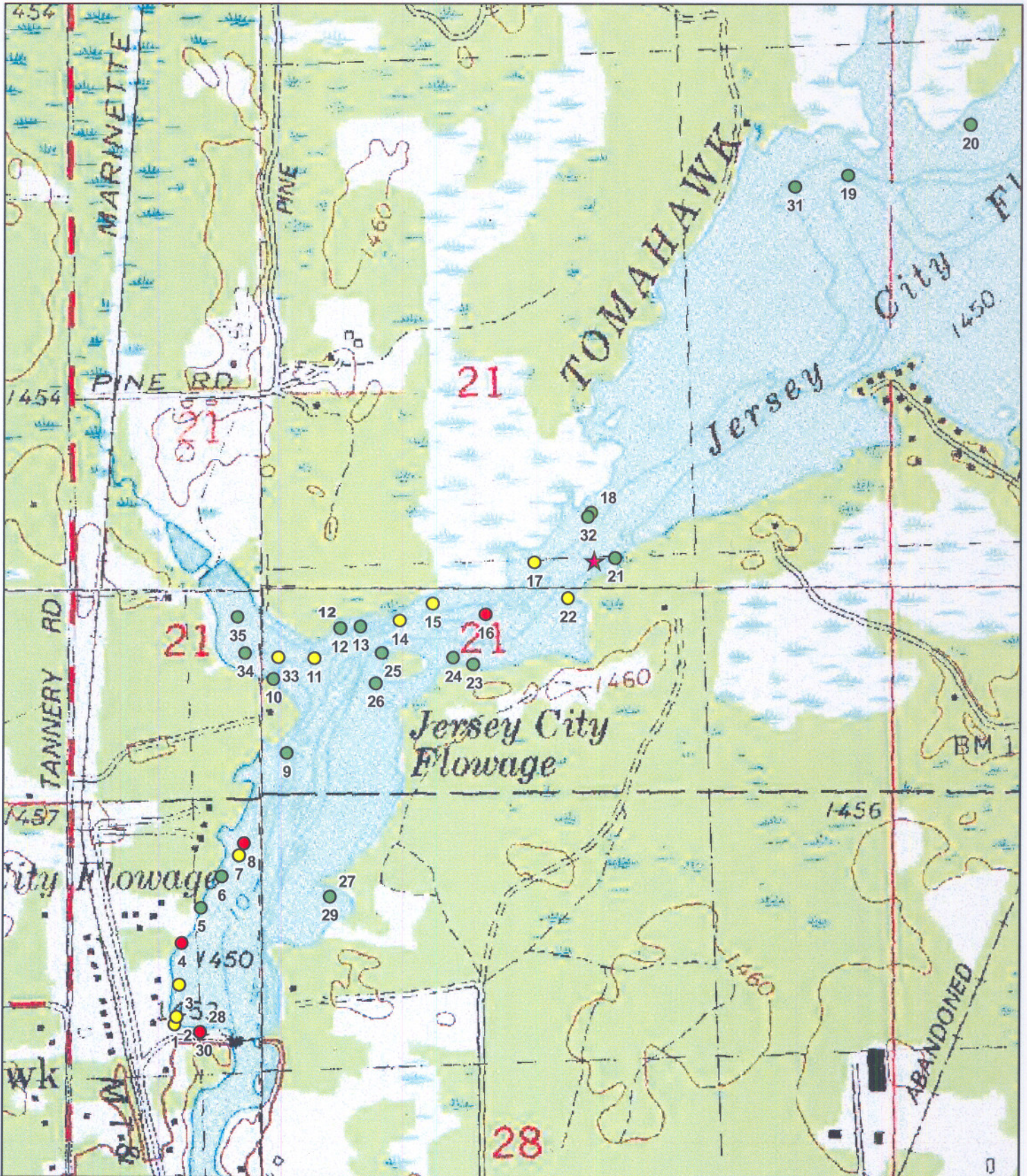
2010 WAUSAU HYDROELECTRIC PROJECT PURPLE LOOSESTRIFE SURVEY RESULTS

APPENDIX C

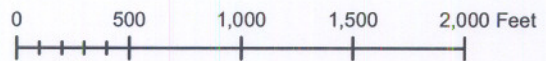
DOCUMENTATION OF CONSULTATION

APPENDIX A

2010 JERSEY HYDROELECTRIC PROJECT PURPLE LOOSESTRIFE SURVEY RESULTS



2010 Jersey Flowage Purple Loosestrife Survey



- ★ Beetle Release Site
- Purple Loosestrife**
- 0-5 Plants
- 6-50 Plants
- >50 Plants

Purple Loosestrife Survey Form

Hydroelectric Project

JERSEY 2010

Inspection Date

28-Jul-10

General Plant Vigor

Colony Number	Colony Size S 0-5 M 6-50 L >50	Plant Height 4=>4ft 3=2-4ft 2=1-2 ft 1= <1 ft	Plant Flowering 4=100% of plants 3=51-99% of plants 2=26-50% of plants 1= <25% of plants	Beetle Feeding 4=0-25% feeding 3=26-50% feeding 2=51-75% feeding 1=76-100% feeding	Total Plant Vigor 10-12=good 7-9=fair 4-6=poor 0-3=very poor	Notes
1	M	2	1	1	4	
2	M	3	1	1	5	
3	M	3	1	1	5	
4	L	3	1	1	5	
5	S	4	4	3	11	
6	S	3	4	3	10	
7	M	3	1	1	5	
8	L	3	1	1	5	
9	S	3	4	3	10	
10	S	3	2	1	6	
11	M	4	2	2	8	

Purple Loosestrife Survey Form

Hydroelectric Project JERSEY 2010

Inspection Date 28-Jul-10

General Plant Vigor

Colony Number	Colony Size S 0-5 M 6-50 L >50	Plant Height 4=>4ft 3=2-4ft 2=1-2 ft 1= <1 ft	Plant Flowering 4=100% of plants 3=51-99% of plants 2=26-50% of plants 1= <25% of plants	Beetle Feeding 4=0-25% feeding 3=26-50% feeding 2=51-75% feeding 1=76-100% feeding	Total Plant Vigor 10-12=good 7-9=fair 4-6=poor 0-3=very poor	Notes
12	S	3	3	2	8	
13	S	3	3	2	8	
14	M	3	3	1	7	
15	M	3	3	1	7	
16	L	3	4	2	9	
17	M	3	4	2	9	
18	S	4	4	3	11	
19	S	4	4	4 No feeding	12	
20	S	3	4	4	11	
21	S	4	4	3	11	
22	M	4	4	3	11	

Purple Loosestrife Survey Form

Hydroelectric Project JERSEY 2010

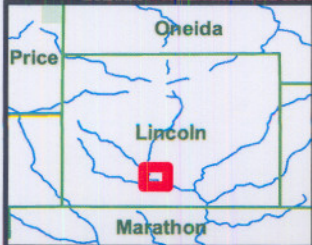
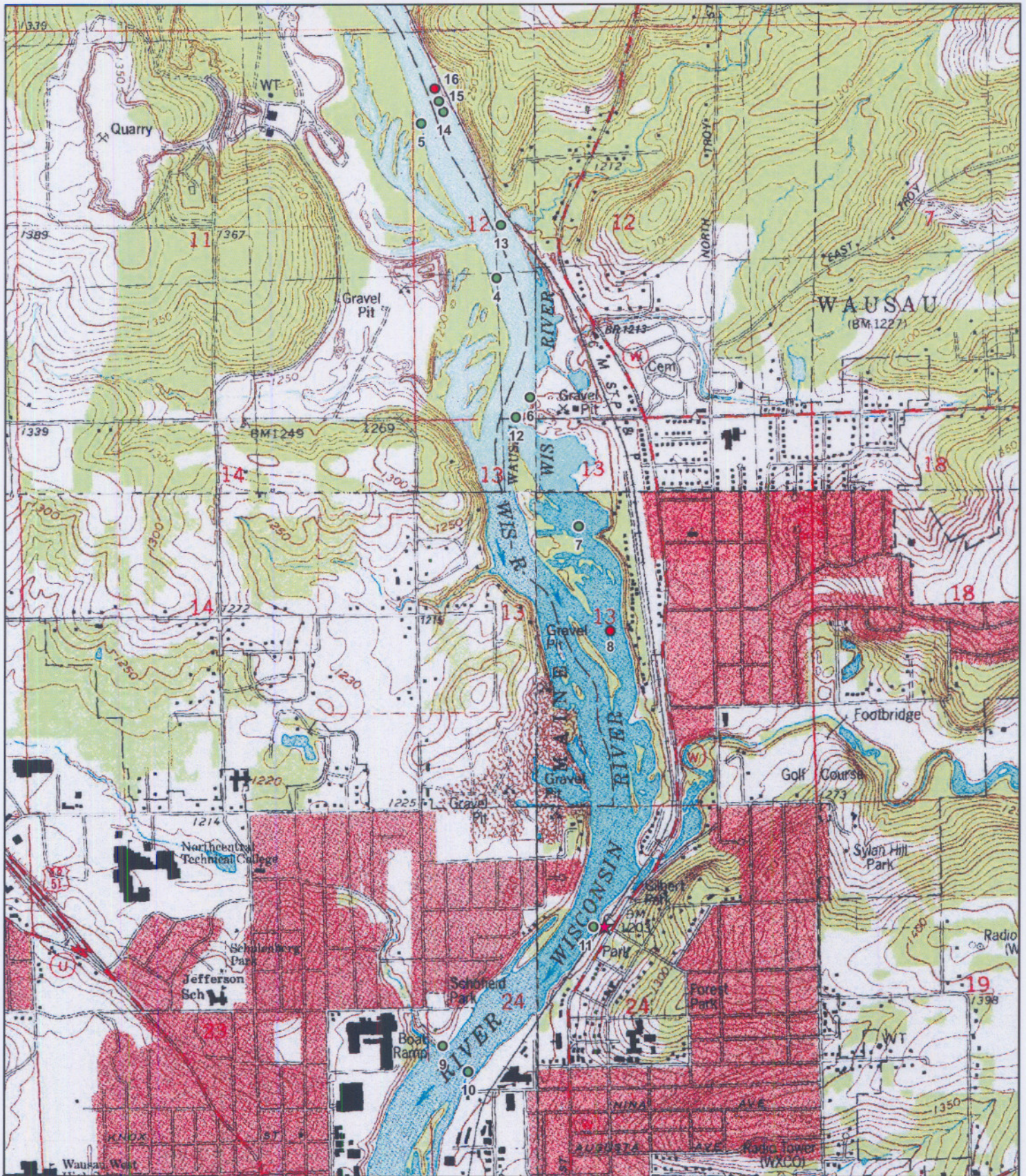
Inspection Date 28-Jul-10

General Plant Vigor

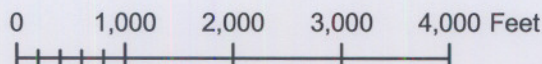
Colony Number	Colony Size S 0-5 M 6-50 L >50	Plant Height	Plant Flowering	Beetle Feeding	Total Plant Vigor	Notes
		4=>4ft 3=2-4ft 2=1-2 ft 1= <1 ft	4=100% of plants 3=51-99% of plants 2=26-50% of plants 1= <25% of plants	4=0-25% feeding 3=26-50% feeding 2=51-75% feeding 1=76-100% feeding	10-12=good 7-9=fair 4-6=poor 0-3=very poor	
25	S	4	4	4 No feeding	12	
26	S	4	3	2	9	
27	S	4	1	1	6	
28	L	1	1	1	3	
29	S	3	4	1	8	
30	L	3	1	1	4	
31	S	4	4	4 No feeding	12	New
32	S	4	4	4 No feeding	12	New
33	M	4	4	2	10	New
34	S	4	3	2	9	New
35	S	4	3	2	9	New

APPENDIX B

2010 WAUSAU HYDROELECTRIC PROJECT PURPLE LOOSESTRIFE SURVEY RESULTS



2010 Wausau Purple Loosestrife Survey



10/08/10

- ★ Beetle Release Site
- Purple Loosestrife**
- 0-5 Plants
- 6-50 Plants
- >50 Plants

Purple Loosestrife Survey FormHydroelectric Project
Inspection Date

Wausau 2010

28-Jul-10

General Plant Vigor

Colony Number	Colony Size S 0-5 M 6-50 L >50	Plant Height 4=>4ft 3=2-4ft 2=1-2 ft 1= <1 ft	General Plant Vigor		Total Plant Vigor 10-12=good 7-9=fair 4-6=poor 0-3=very poor	Notes
			Plant Flowering 4=100% of plants 3=51-99% of plants 2=26-50% of plants 1= <25% of plants	Beetle Feeding 4=0-25% feeding 3=26-50% feeding 2=51-75% feeding 1=76-100% feeding		
1						No PL-Removed From Map
2						No PL-Removed From Map
3						No PL-Removed From Map
4	S	4	4	4 No feeding	12	
5	S	4	4	4 No feeding	12	
6	S	4	4	1	9	
7	S	4	4	3	11	
8	L	3	1	1	5	
9	S	4	3	1	8	New Location
10	S	4	3	1	8	New Location
11	S	4	4	4 No feeding	12	New Location

**APPENDIX C
DOCUMENTATION OF CONSULTATION**



Wisconsin Public Service Corporation
2001 Plover Road
P.O. Box 637
Plover, WI 54467-0637
www.wisconsinpublicservice.com

October 8, 2010

FERC Project No. 1999 & 2476

Mr. Dan Houston
Wisconsin Department of Natural Resources
5291 N State House Circle
Mercer, WI 54547

Dear Mr. Houston:

2010 Noxious Plants Monitoring Reports, Wausau and Jersey Hydroelectric Project (FERC Project # 1999 and Project #2476)

On December 7, 2007, Wisconsin Public Service Corporation (WPS) submitted amendments to the Federal Energy Regulatory Commission (FERC) Approved Purple Loosestrife Monitoring Plan for the Wausau and Jersey Hydroelectric Projects (FERC project # 1999 and #2476) dated July 14, 1997.

Per the Order Amending Purple Loosestrife Monitoring Plan issued October 23, 2008, WPS is to provide annual updates on the *Galerucella sp.* beetles (beetles) release sites and purple loosestrife populations for a period of six years, beginning in 2009 to the Wisconsin Department of Natural Resources (WDNR), U.S. Fish & Wildlife Service (FWS) and FERC no later than October 31st of each year for the Wausau and Jersey Hydroelectric Projects.

Jersey Hydroelectric Project

In 2010, WPS released beetles that were reared on potted purple loosestrife plants. A total of 2000 beetles were released on July 12, 2010.

A purple loosestrife survey was conducted at the Jersey Hydroelectric Project on July 28, 2010. The results of the survey indicated a total of 35 purple loosestrife colonies within the project boundary. Beetle feeding was reported at 28 colonies. Heavy feeding (colonies with 75% - 100% of plants with active beetle feeding)

was noted at 13 of those colonies. The purple loosestrife survey figure and datasheet provide the location of the purple loosestrife, location of beetle feeding and the beetle release location. The figure and datasheet are located in Appendix A.

Wausau Hydroelectric Project

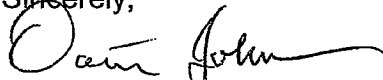
In 2010, WPS released beetles that were reared on potted purple loosestrife plants. Approximately 2000 beetles were released at the Wausau Hydroelectric Project on July 12, 2010.

WPS completed a purple loosestrife survey on July 28, 2010. The results of the survey indicated a total of 13 purple loosestrife colonies in the project boundary. Eleven of the colonies identified were small, comprising of five or less plants. Only two of the colonies consisted of greater than five plants. Beetle feeding was observed at five colonies. Beetle releases are planned to be completed on the northern end of the project in 2011 to target the newly identified loosestrife colonies.

The purple loosestrife survey figure and datasheet provide the location of the purple loosestrife, location of beetle feeding and the beetle release location. The figure and datasheet are located in Appendix B.

If you have any questions, please do not hesitate to call me at (715) 345-7509.

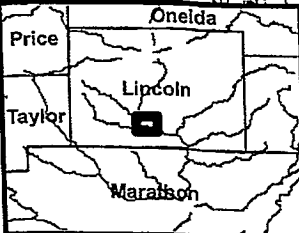
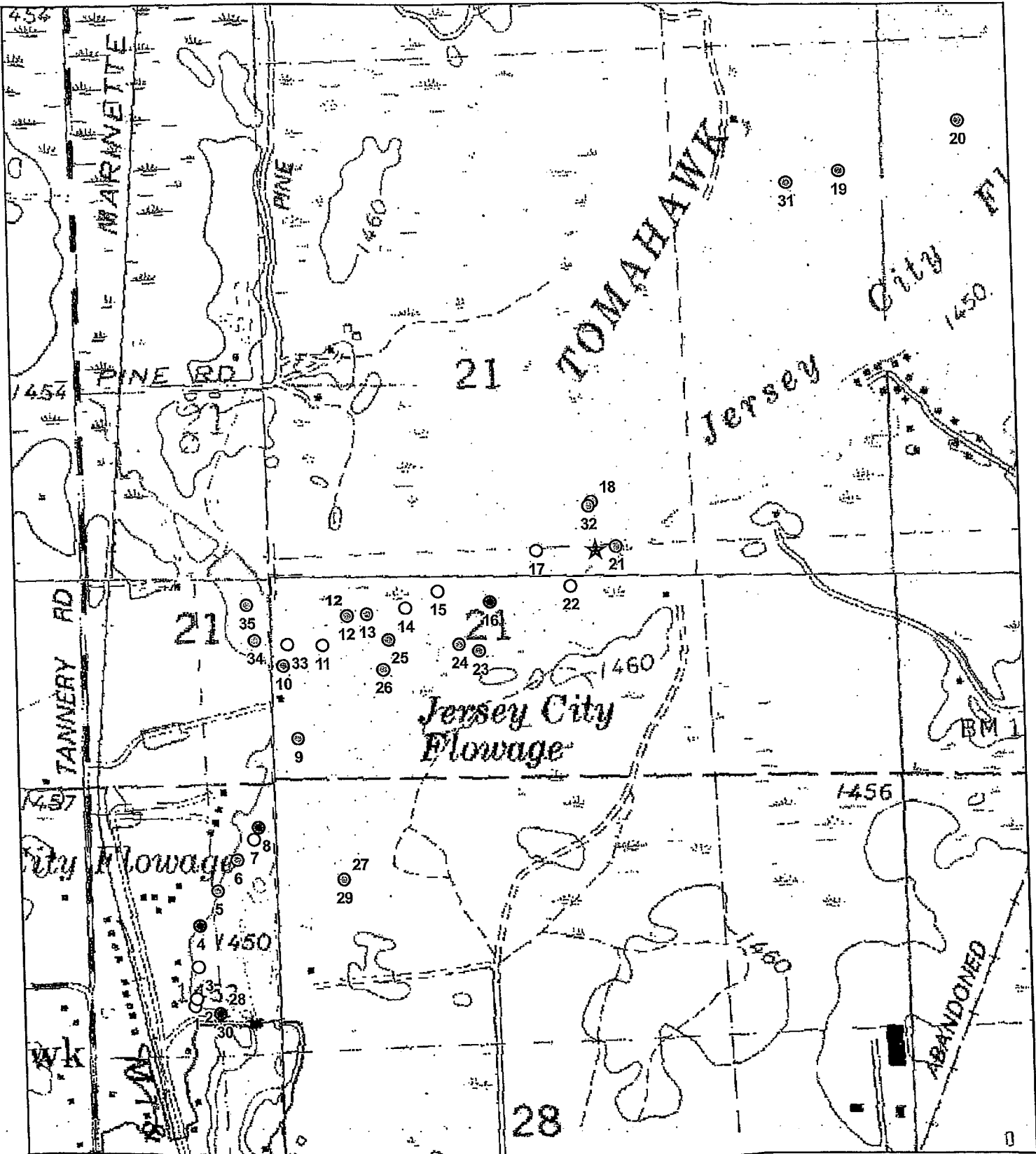
Sincerely,



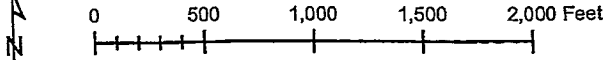
Darrin Johnson
Environmental Consultant

Enc.

cc: Ms. Joan Johaneck, WPS
Mr. Bill Bloczynski, WPS – MERH
Mr. Bruce Crocker, WPS



2010 Jersey Flowage Purple Loosestrife Survey



- ★ Beetle Release Site
- Purple Loosestrife
- ⊙ 0-5 Plants
- 6-50 Plants
- >50 Plants

09/23/10

Purple Loosestrife Survey Form

Hydroelectric Project

JERSEY 2010

Inspection Date

28-Jul-10

General Plant Vigor						
Colony Number	Colony Size S 0-5 M 6-50 L >50	Plant Height 4=>4ft 3=2-4ft 2=1-2 ft 1= <1 ft	Plant Flowering 4=100% of plants 3=51-99% of plants 2=26-50% of plants 1= <25% of plants	Beetle Feeding 4=0-25% feeding 3=26-50% feeding 2=51-75% feeding 1=76-100% feeding	Total Plant Vigor 10-12=good 7-9=fair 4-6=poor 0-3=very poor	Notes
1	M	2	1	1	4	
2	M	3	1	1	5	
3	M	3	1	1	5	
4	L	3	1	1	5	
5	S	4	4	3	11	
6	S	3	4	3	10	
7	M	3	1	1	5	
8	L	3	1	1	5	
9	S	3	4	3	10	
10	S	3	2	1	6	
11	M	4	2	2	8	

Purple Loosestrife Survey Form

Hydroelectric Project JERSEY 2010

Inspection Date 28-Jul-10

Colony Number	Colony Size S 0-5 M 6-50 L >50	General Plant Vigor			Total Plant Vigor 10-12=good 7-9=fair 4-6=poor 0-3=very poor	Notes
		Plant Height 4=>4ft 3=2-4ft 2=1-2 ft 1= <1 ft	Plant Flowering 4=100% of plants 3=51-99% of plants 2=26-50% of plants 1= <25% of plants	Beetle Feeding 4=0-25% feeding 3=26-50% feeding 2=51-75% feeding 1=76-100% feeding		
12	S	3	3	2	8	
13	S	3	3	2	8	
14	M	3	3	1	7	
15	M	3	3	1	7	
16	L	3	4	2	9	
17	M	3	4	2	9	
18	S	4	4	3	11	
19	S	4	4	4 No feeding	12	
20	S	3	4	4	11	
21	S	4	4	3	11	
22	M	4	4	3	11	

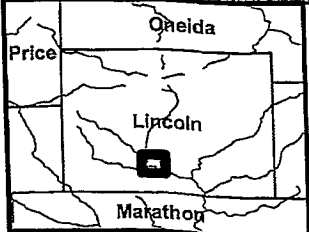
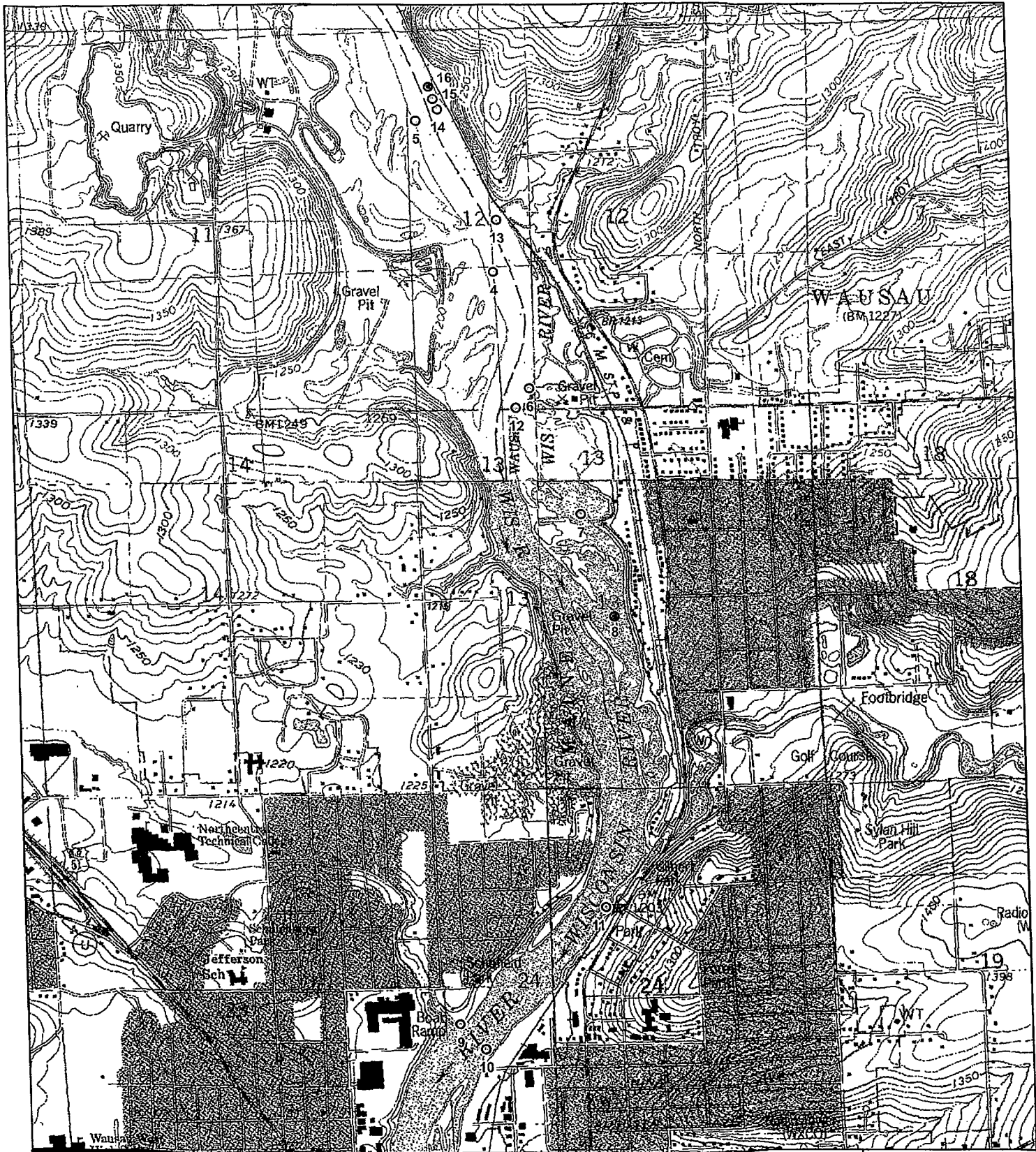
Purple Loosestrife Survey Form

Hydroelectric Project JERSEY 2010Inspection Date 28-Jul-10

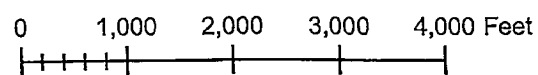
Colony Number	Colony Size S 0-5 M 6-50 L >50	General Plant Vigor			Total Plant Vigor 10-12=good 7-9=fair 4-6=poor 0-3=very poor	Notes
		Plant Height 4=>4ft 3=2-4ft 2=1-2 ft 1= <1 ft	Plant Flowering 4=100% of plants 3=51-99% of plants 2=26-50% of plants 1= <25% of plants	Beetle Feeding 4=0-25% feeding 3=26-50% feeding 2=51-75% feeding 1=76-100% feeding		
25	S	4	4	4 No feeding	12	
26	S	4	3	2	9	
27	S	4	1	1	6	
28	L	1	1	1	3	
29	S	3	4	1	8	
30	L	3	1	1	4	
31	S	4	4	4 No feeding	12	New
32	S	4	4	4 No feeding	12	New
33	M	4	4	2	10	New
34	S	4	3	2	9	New
35	S	4	3	2	9	New

APPENDIX B

**2010 WAUSAU HYDROELECTRIC PROJECT PURPLE
LOOSESTRIFE SURVEY RESULTS**



2010 Wausau Purple Loosestrife Survey



10/08/10

- ★ Beetle Release Site
- Purple Loosestrife
- 0-5 Plants
- 6-50 Plants
- >50 Plants

Purple Loosestrife Survey Form

Hydroelectric Project
Inspection Date

Wausau 2010
28-Jul-10

General Plant Vigor

Colony Number	Colony Size S 0-5 M 6-50 L >50	Plant Height 4=>4ft 3=2-4ft 2=1-2 ft 1= <1 ft	Plant Flowering 4=100% of plants 3=51-99% of plants 2=26-50% of plants 1= <25% of plants	Beetle Feeding 4=0-25% feeding 3=26-50% feeding 2=51-75% feeding 1=76-100% feeding	Total Plant Vigor 10-12=good 7-9=fair 4-6=poor 0-3=very poor	Notes
1						No PL-Removed From Map
2						No PL-Removed From Map
3						No PL-Removed From Map
4	S	4	4	4 No feeding	12	
5	S	4	4	4 No feeding	12	
6	S	4	4	1	9	
7	S	4	4	3	11	
8	L	3	1	1	5	
9	S	4	3	1	8	New Location
10	S	4	3	1	8	New Location
11	S	4	4	4 No feeding	12	New Location

THE WDNR DID NOT PROVIDE ANY COMMENTS



Wisconsin Public Service Corporation

2001 Plover Road

P.O. Box 637

Plover, WI 54467-0637

www.wisconsinpublicservice.com

October 8, 2010

FERC Project No. 1999 & 2476

Mr. Nicholas Utrup
U.S. Fish & Wildlife Service
Department of the Interior
2661 Scott Tower Drive
New Franken, WI 54229-9565

Dear Mr. Utrup:

2010 Noxious Plants Monitoring Reports, Wausau and Jersey Hydroelectric Project (FERC Project # 1999 and Project #2476)

On December 7, 2007, Wisconsin Public Service Corporation (WPS) submitted amendments to the Federal Energy Regulatory Commission (FERC) Approved Purple Loosestrife Monitoring Plan for the Wausau and Jersey Hydroelectric Projects (FERC project # 1999 and #2476) dated July 14, 1997.

Per the Order Amending Purple Loosestrife Monitoring Plan issued October 23, 2008, WPS is to provide annual updates on the *Galerucella sp.* beetles (beetles) release sites and purple loosestrife populations for a period of six years, beginning in 2009 to the Wisconsin Department of Natural Resources (WDNR), U.S. Fish & Wildlife Service (FWS) and FERC no later than October 31st of each year for the Wausau and Jersey Hydroelectric Projects.

Jersey Hydroelectric Project

In 2010, WPS released beetles that were reared on potted purple loosestrife plants. A total of 2000 beetles were released on July 12, 2010.

A purple loosestrife survey was conducted at the Jersey Hydroelectric Project on July 28, 2010. The results of the survey indicated a total of 35 purple loosestrife colonies within the project boundary. Beetle feeding was reported at 28 colonies. Heavy feeding (colonies with 75% - 100% of plants with active beetle feeding)

was noted at 13 of those colonies. The purple loosestrife survey figure and datasheet provide the location of the purple loosestrife, location of beetle feeding and the beetle release location. The figure and datasheet are located in Appendix A.

Wausau Hydroelectric Project

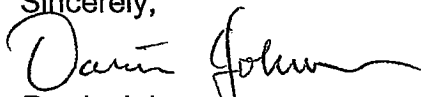
In 2010, WPS released beetles that were reared on potted purple loosestrife plants. Approximately 2000 beetles were released at the Wausau Hydroelectric Project on July 12, 2010.

WPS completed a purple loosestrife survey on July 28, 2010. The results of the survey indicated a total of 13 purple loosestrife colonies in the project boundary. Eleven of the colonies identified were small, comprising of five or less plants. Only two of the colonies consisted of greater than five plants. Beetle feeding was observed at five colonies. Beetle releases are planned to be completed on the northern end of the project in 2011 to target the newly identified loosestrife colonies.

The purple loosestrife survey figure and datasheet provide the location of the purple loosestrife, location of beetle feeding and the beetle release location. The figure and datasheet are located in Appendix B.

If you have any questions, please do not hesitate to call me at (715) 345-7509.

Sincerely,



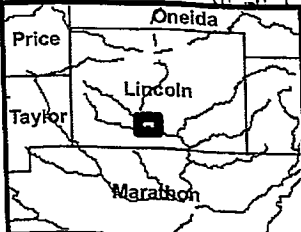
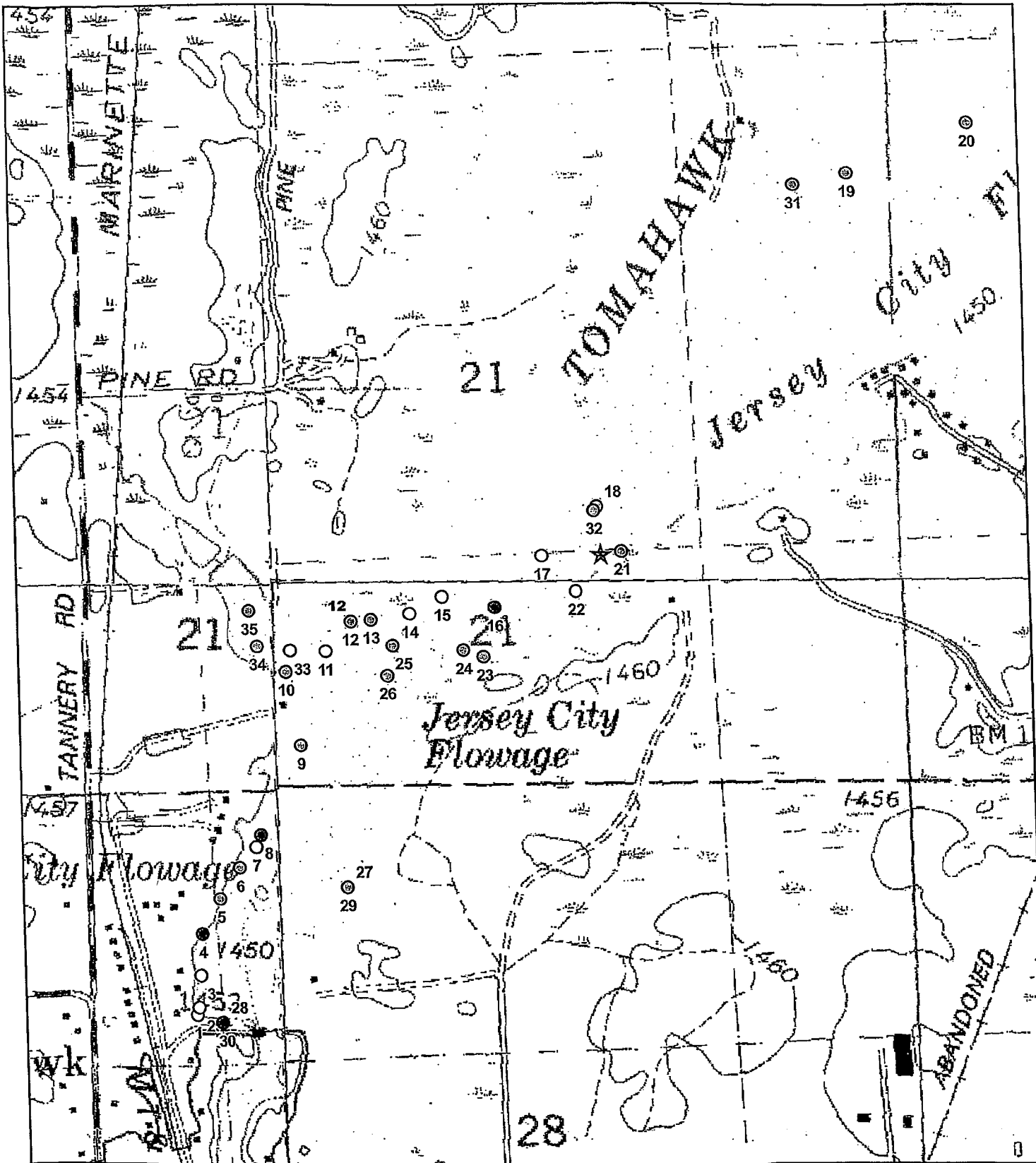
Darrin Johnson
Environmental Consultant

Enc.

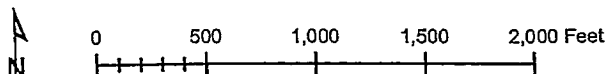
cc: Ms. Joan Johaneck, WPS
Mr. Bill Bloczynski, WPS – MERH
Mr. Bruce Crocker, WPS

APPENDIX A

**2010 JERSEY HYDROELECTRIC PROJECT PURPLE
LOOSESTRIFE SURVEY RESULTS**



2010 Jersey Flowage Purple Loosestrife Survey



- ★ Beetle Release Site
- Purple Loosestrife
- ⊙ 0-5 Plants
- 6-50 Plants
- >50 Plants

09/23/10

Purple Loosestrife Survey Form

Hydroelectric Project

JERSEY 2010

Inspection Date

28-Jul-10

General Plant Vigor						
Colony Number	Colony Size S 0-5 M 6-50 L >50	Plant Height 4=>4ft 3=2-4ft 2=1-2 ft 1= <1 ft	Plant Flowering 4=100% of plants 3=51-99% of plants 2=26-50% of plants 1= <25% of plants	Beetle Feeding 4=0-25% feeding 3=26-50% feeding 2=51-75% feeding 1=76-100% feeding	Total Plant Vigor 10-12=good 7-9=fair 4-6=poor 0-3=very poor	Notes
1	M	2	1	1	4	
2	M	3	1	1	5	
3	M	3	1	1	5	
4	L	3	1	1	5	
5	S	4	4	3	11	
6	S	3	4	3	10	
7	M	3	1	1	5	
8	L	3	1	1	5	
9	S	3	4	3	10	
10	S	3	2	1	6	
11	M	4	2	2	8	

Purple Loosestrife Survey Form

Hydroelectric Project JERSEY 2010Inspection Date 28-Jul-10

General Plant Vigor						
Colony Number	Colony Size S 0-5 M 6-50 L >50	Plant Height 4=>4ft 3=2-4ft 2=1-2 ft 1= <1 ft	Plant Flowering 4=100% of plants 3=51-99% of plants 2=26-50% of plants 1= <25% of plants	Beetle Feeding 4=0-25% feeding 3=26-50% feeding 2=51-75% feeding 1=76-100% feeding	Total Plant Vigor 10-12=good 7-9=fair 4-6=poor 0-3=very poor	Notes
12	S	3	3	2	8	
13	S	3	3	2	8	
14	M	3	3	1	7	
15	M	3	3	1	7	
16	L	3	4	2	9	
17	M	3	4	2	9	
18	S	4	4	3	11	
19	S	4	4	4 No feeding	12	
20	S	3	4	4	11	
21	S	4	4	3	11	
22	M	4	4	3	11	

Purple Loosestrife Survey Form

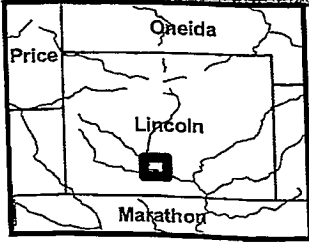
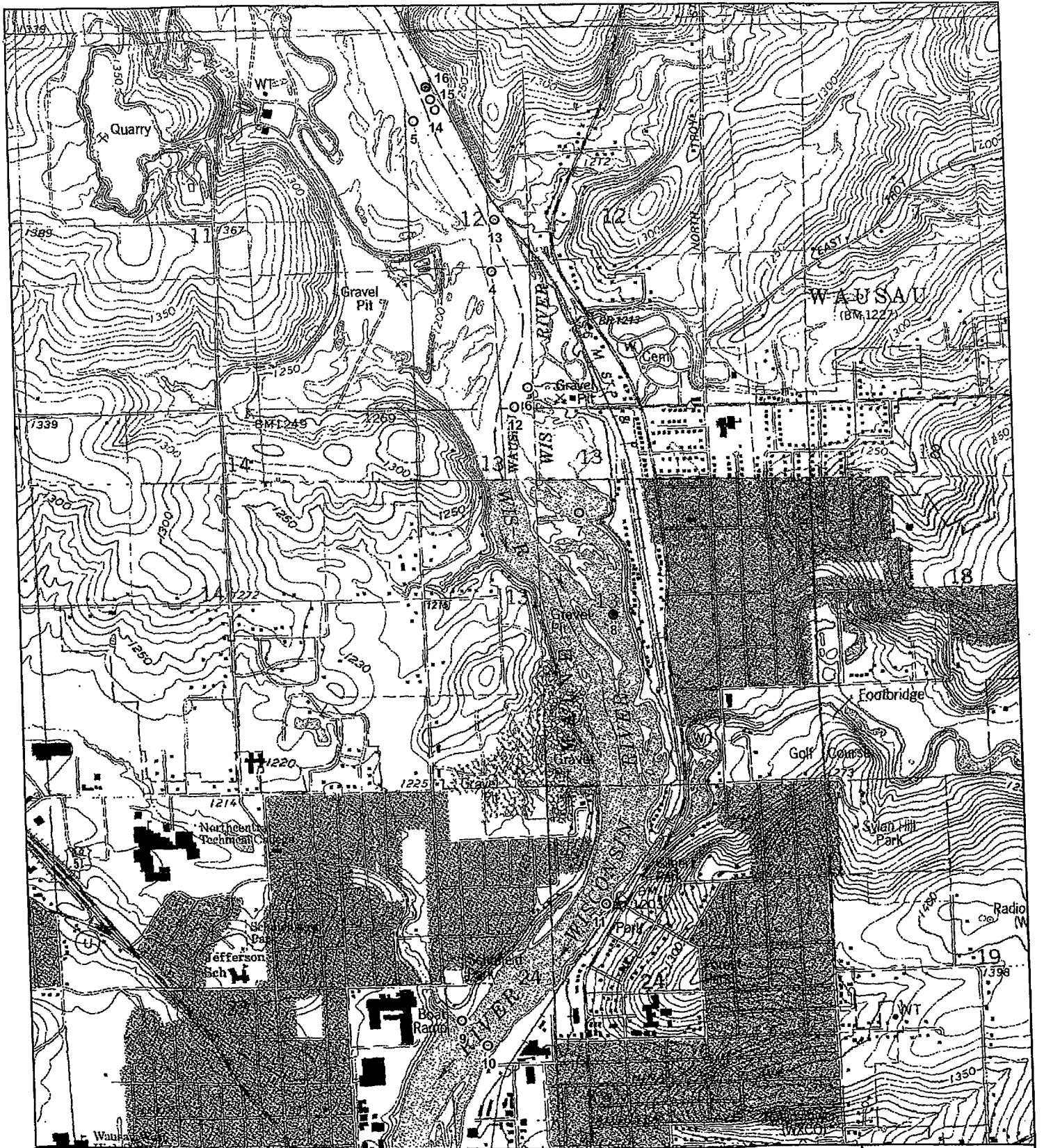
Hydroelectric Project JERSEY 2010

Inspection Date 28-Jul-10

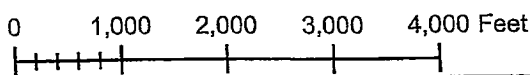
General Plant Vigor						
Colony Number	Colony Size S 0-5 M 6-50 L >50	Plant Height 4=>4ft 3=2-4ft 2=1-2 ft 1= <1 ft	Plant Flowering 4=100% of plants 3=51-99% of plants 2=26-50% of plants 1= <25% of plants	Beetle Feeding 4=0-25% feeding 3=26-50% feeding 2=51-75% feeding 1=76-100% feeding	Total Plant Vigor 10-12=good 7-9=fair 4-6=poor 0-3=very poor	Notes
25	S	4	4	4 No feeding	12	
26	S	4	3	2	9	
27	S	4	1	1	6	
28	L	1	1	1	3	
29	S	3	4	1	8	
30	L	3	1	1	4	
31	S	4	4	4 No feeding	12	New
32	S	4	4	4 No feeding	12	New
33	M	4	4	2	10	New
34	S	4	3	2	9	New
35	S	4	3	2	9	New

APPENDIX B

**2010 WAUSAU HYDROELECTRIC PROJECT PURPLE
LOOSESTRIFE SURVEY RESULTS**



2010 Wausau Purple Loosestrife Survey



- ★ Beetle Release Site
- Purple Loosestrife
- 0-5 Plants
- 6-50 Plants
- >50 Plants

10/08/10

Purple Loosestrife Survey Form

Hydroelectric Project Wausau 2010Inspection Date 28-Jul-10

General Plant Vigor						
Colony Number	Colony Size S 0-5 M 6-50 L >50	Plant Height 4=>4ft 3=2-4ft 2=1-2 ft 1= <1 ft	Plant Flowering 4=100% of plants 3=51-99% of plants 2=26-50% of plants 1= <25% of plants	Beetle Feeding 4=0-25% feeding 3=26-50% feeding 2=51-75% feeding 1=76-100% feeding	Total Plant Vigor 10-12=good 7-9=fair 4-6=poor 0-3=very poor	Notes
1						No PL-Removed From Map
2						No PL-Removed From Map
3						No PL-Removed From Map
4	S	4	4	4 No feeding	12	
5	S	4	4	4 No feeding	12	
6	S	4	4	1	9	
7	S	4	4	3	11	
8	L	3	1	1	5	
9	S	4	3	1	8	New Location
10	S	4	3	1	8	New Location
11	S	4	4	4 No feeding	12	New Location

THE US FISH AND WILDLIFE SERVICE DID NOT PROVIDE ANY COMMENTS

Document Content(s)

20101213 FERC LTR WAUSAU JERSEYfiling.PDF.....	1-5
Wausau Jersey Appendix A.PDF.....	6-10
Wausau Jersey Appendix B.PDF.....	11-14
Wausau Jersey Appendix C.PDF.....	15-37