



Wisconsin Public Service Corporation

700 North Adams Street
P.O. Box 19001
Green Bay, WI 54307-9001

www.wisconsinpublicservice.com

November 26, 2012

FERC Project Nos. 1999 and 2476

Ms. Kimberly D. Bose, Secretary
Federal Energy Regulatory Commission
888 First Street, NE
Washington, DC 20426

Dear Secretary Bose:

RE: 2012 Noxious Plants Monitoring Reports, Wausau and Jersey Hydroelectric Projects

Per the order a Amending Purple Loosestrife Monitoring Plan issued October 23, 2008, Wisconsin Public Service Corporation (WPS) is to provide annual updates on the *Galerucella sp.* beetles (beetles) release sites and purple loosestrife populations for a period of six years, beginning in 2009 to the Wisconsin Department of Natural Resources (WDNR) and the U.S. Fish and Wildlife Service (FWS) no later than October 31st of each year and to the Federal Energy Regulatory Commission (FERC) with agency comments no later than December 15 of each year.

Jersey Hydroelectric Project

In 2012, WPS released beetles that were reared on potted purple loosestrife plants. Approximately 2000 beetles were released on July 5, 2012.

A purple loosestrife survey was conducted at the Jersey Hydroelectric Project on July 31, 2012. The results of the survey indicated a total of twenty-one (21) purple loosestrife colonies within the project boundary. Beetle feeding was noted at nineteen (19) colonies. Heavy feeding (colonies with 75% to 100% of plants with active beetle feeding) was noted at fourteen (14) of those colonies. For comparison purposes, 2011 survey results noted a total of sixteen (16) purple loosestrife colonies. Beetle feeding was noted at fifteen (15) colonies with heavy feeding noted at eight (8) colonies. The purple loosestrife figure and data sheet provide the location of the purple loosestrife, location of beetle feeding and the beetle release location. The figure and datasheet are located in Appendix A.

Wausau Hydroelectric Project

In 2012, WPS released beetles that were reared on potted purple loosestrife plants. Approximately 4000 beetles were released at the Wausau Hydroelectric Project on July 6, 2012.

WPS completed a purple loosestrife survey on August 3, 2012. The results of the survey indicated a total of fifteen (15) purple loosestrife colonies in the project boundary. Beetle feeding was noted at ten (10) colonies. For comparison, the 2011 survey noted a total of eight (8) colonies. Beetle feeding was noted at six (6) colonies.

Ms. Kimberly D. Bose, Secretary
November 26, 2012
Page 2 of 2

The purple loosestrife survey figure and datasheet provide the location of the purple loosestrife, location of beetle feeding and beetle release locations. The figure and data sheet are located in Appendix B.

Documentation of submittal of these results to the Wisconsin Department of Natural Resources and the United States Fish and Wildlife Service has been included in Appendix C. No comments were received from the resource agencies.

If you have any questions regarding this report, please do not hesitate to contact Darrin Johnson at (715) 345-7509.

Sincerely,

A handwritten signature in black ink, appearing to read "T. Jensky". The signature is written in a cursive, flowing style.

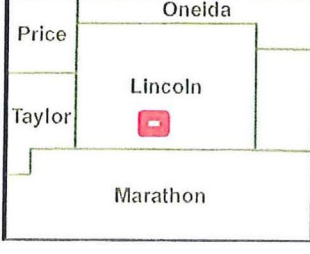
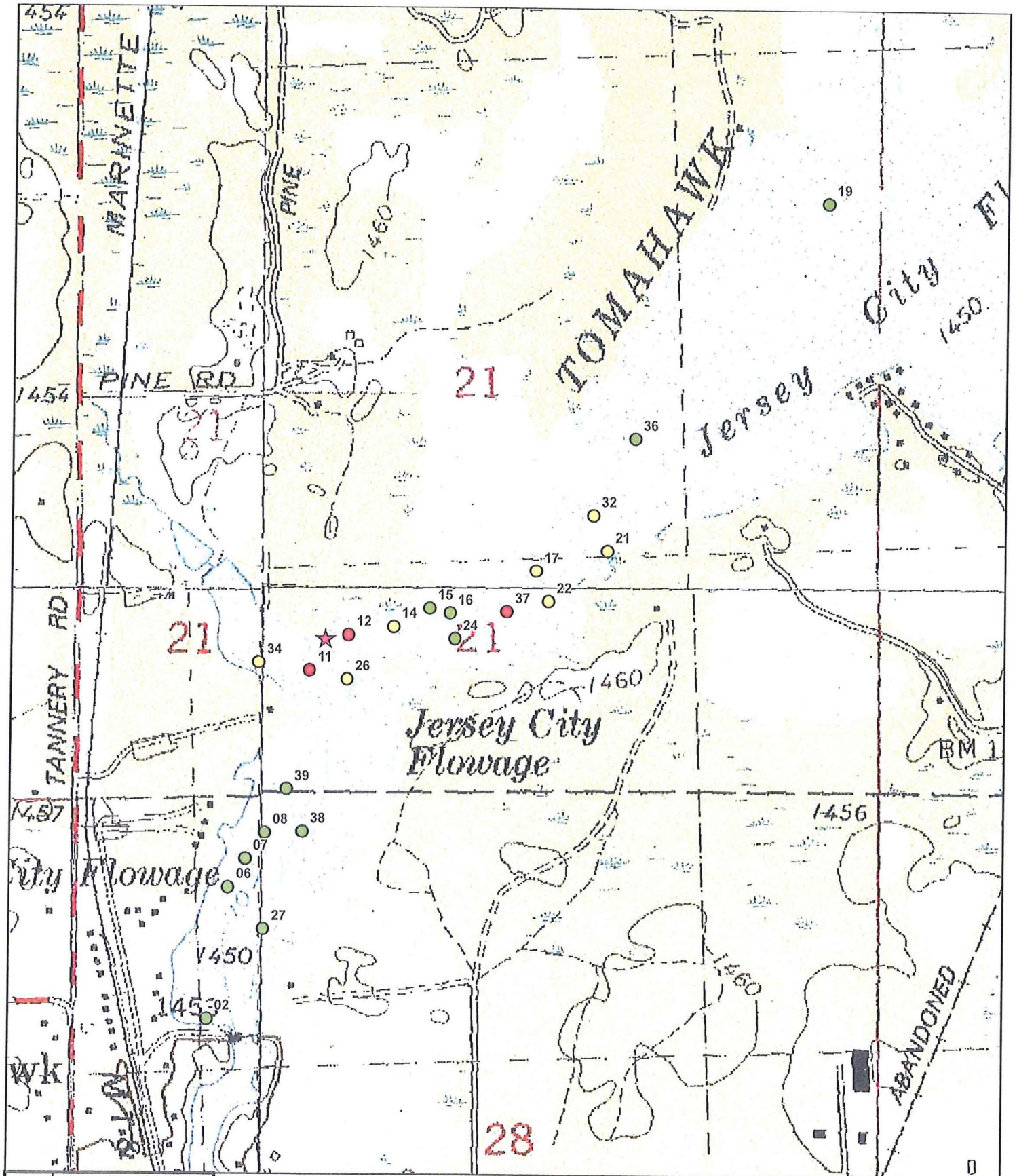
Terry P. Jensky
Vice President - Generation Assets

Enc.

cc: Mr. Gil Snyder, WPS
Mr. Bill Bloczynski, WPS
Mr. Shawn Puzen, IBS
Mr. William Bosacki, WPS
Ms. Joan Johaneck, WPS
Ms. Pat Grant, FERC-Chicago

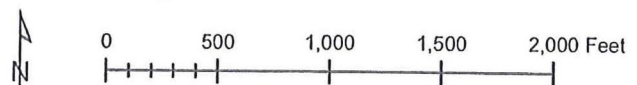
APPENDIX A

Jersey Flowage Purple Loosestrife Survey Results



2012 Jersey Flowage Purple Loosestrife Survey

- ★ Beetle Release Site
- Purple Loosestrife**
- 0-5 Plants
- 6-50 Plants
- >50 Plants



Date: 10/15/2012

Purple Loosestrife Survey Form

Hydroelectric Project

Inspection Date

JRSPV

7/21/12

General Plant Vigor

Colony Number	Colony Size S 0-5 M 6-50 L >50	Plant Height 4=>4ft 3=2-4ft 2=1-2 ft 1= <1 ft	Plant Flowering 4=100% of plants 3=51-99% of plants 2=26-50% of plants 1= <25% of plants	Beetle Feeding 4=0-25% feeding 3=26-50% feeding 2=51-75% feeding 1=76-100% feeding	Total Plant Vigor 10-12=good 7-9=fair 4-6=poor 0-3=very poor	Notes	GPS Point
12	L	3	3	1	7	Heavy fed	JPL14
13	NO	PLANTS		NOTED			
14	M	4	3	1	8	Heavy Feeding	JPL15
15	S	4	3	1	8	Heavy feeding	JPL16
16	S	4	3	1	8	Heavy feeding	JPL17
17	M	4	2	1	7	Heavy feeding	JPL19
18	NO	PLANTS		NOTED			
19	S	4	4	4	12	No Feeding	JPL22
20	NO	PLANTS		NOTED			
21	M	3	4	2	9		JPL1
22	M	3	4	1	8	Heavy Feeding	JPL2

Purple Loosestrife Survey Form

Hydroelectric Project

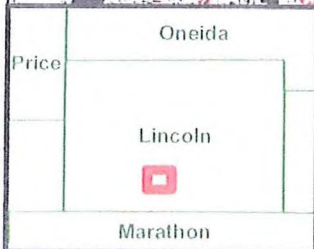
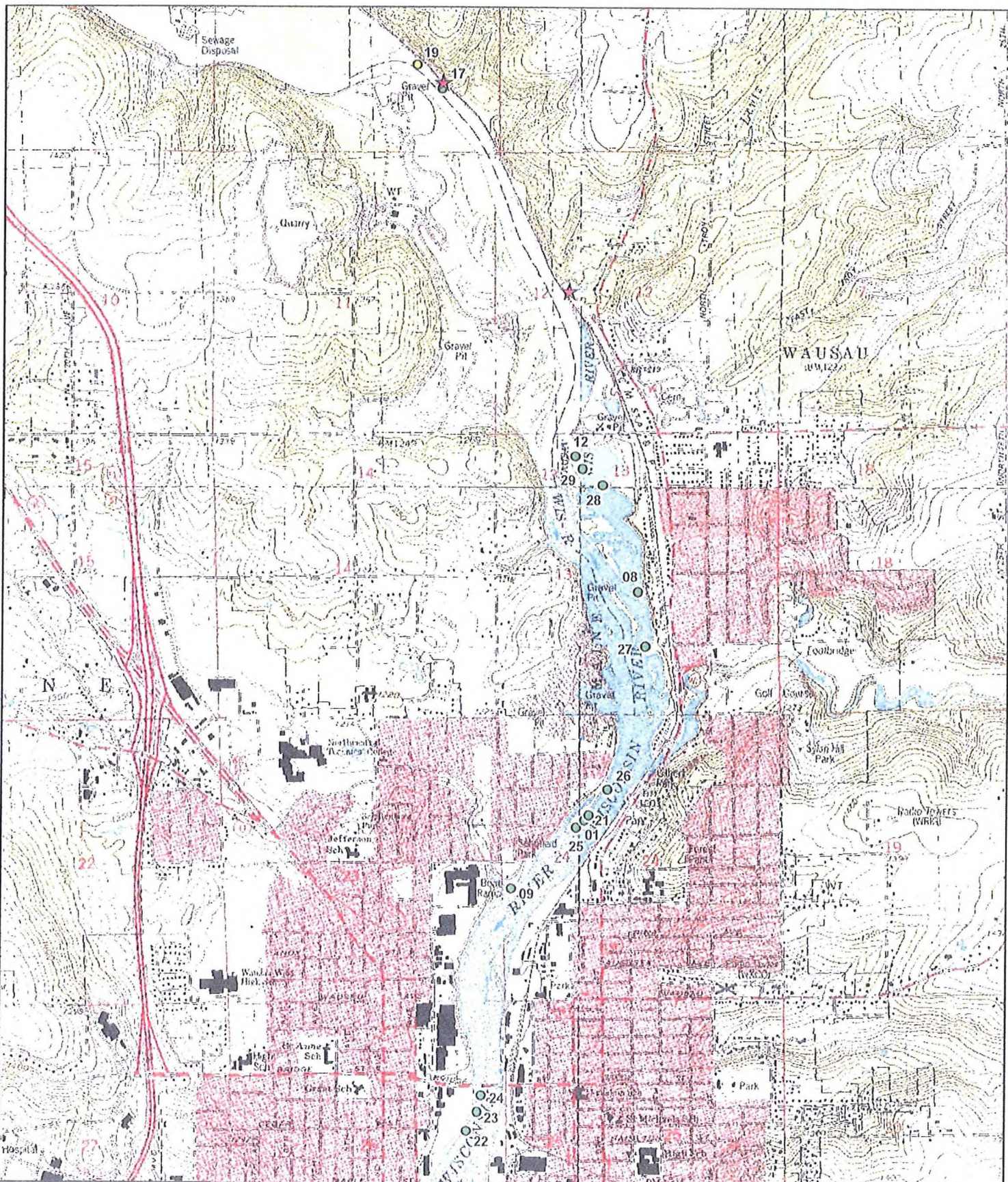
Inspection Date

Jerry
7/31/12

Colony Number	Colony Size S 0-5 M 6-50 L >50	General Plant Vigor			Total Plant Vigor 10-12=good 7-9=fair 4-6=poor 0-3=very poor	Notes	GPS Point
		Plant Height 4=>4ft 3=2-4ft 2=1-2 ft 1=<1 ft	Plant Flowering 4=100% of plants 3=51-99% of plants 2=26-50% of plants 1=<25% of plants	Beetle Feeding 4=0-25% feeding 3=26-50% feeding 2=51-75% feeding 1=76-100% feeding			
23	NO	PLANTS		Noted			
24	S	3	4	2	9		JPL3
25	NO	PLANTS		NOTED			
26	M	4	3	1	8	Heavy Feed-up	JPL4
27	S	3	4	4	11	NO Feed-up	JPL6
28	NO	PLANTS		Noted			
29	NO	PLANTS		NOTED			
30	NO	PLANTS		Noted			
31	NO	PLANTS		Noted			
32	M	4	2	1	7	Heavy feeding	JPL20
33	NO	PLANTS		NOTED			

APPENDIX B

Wausau Flowage Purple Loosestrife Survey Results



**2012 Wausau
Purple Loosestrife Survey**

0 1,000 2,000 3,000 4,000 Feet

Date: 10/10/2012

- ★ Beetle Release Site
- Purple Loosestrife**
- 0-5 Plants
- 6-50 Plants
- >50 Plants

Purple Loosestrife Survey Form

Hydroelectric Project

Inspection Date

Wausau

8/2/12

Colony Number	Colony Size S 0-5 M 6-50 L >50	General Plant Vigor			Total Plant Vigor 10-12=good 7-9=fair 4-6=poor 0-3=very poor	Notes	GPS Point
		Plant Height 4=>4ft 3=2-4ft 2=1-2 ft 1= <1 ft	Plant Flowering 4=100% of plants 3=51-99% of plants 2=26-50% of plants 1= <25% of plants	Beetle Feeding 4=0-25% feeding 3=26-50% feeding 2=51-75% feeding 1=76-100% feeding			
1	S	4	4	4	12	No Feed	348
2	No	Plants Noted					
3	No	Plants Noted					
4	No	Plants Noted					
5	No	Plants Noted					
6	No	Plants Noted					
7	No	Plants Noted					
8	S	2	2	1	5		355
9	S	4	4	2	10		357
10	No	Plants Noted					
11	No	Plants Noted					

Purple Loosestrife Survey Form

Hydroelectric Project
Inspection Date

Wau Sika
8/3/12

Colony Number	Colony Size S 0-5 M 6-50 L >50	General Plant Vigor			Total Plant Vigor 10-12=good 7-9=fair 4-6=poor 0-3=very poor	Notes	GPS Point
		Plant Height 4=>4ft 3=2-4ft 2=1-2 ft 1=<1 ft	Plant Flowering 4=100% of plants 3=51-99% of plants 2=26-50% of plants 1=<25% of plants	Beetle Feeding 4=0-25% feeding 3=26-50% feeding 2=51-75% feeding 1=76-100% feeding			
12	S	4	3	2	9		357
13	NO	Plants Noted					
14	NO	Plants Noted					
15	NO	Plants Noted					
16	NO	Plants Noted					
17	S	3	4	2	9		194
18	NO	Plants Noted					
19	M	3	4	2	9		195
20	NO	PLANTS		Noted			
21	S	4	4	4	12	No Feeding	349
22	S	4	4	4	12	No Feeding	344

APPENDIX C

Documentation of Consultation With Resource Agencies



Wisconsin Public Service Corporation

700 North Adams Street
P.O. Box 19001
Green Bay, WI 54307-9001

www.wisconsinpublicservice.com

October 18, 2012

Cheryl Laatsch
WDNR
101 South Webster Street OE/7
Madison, WI 53703

Nicholas Utrup
US Fish and Wildlife Service
2661 Tower Drive
New Franken, WI 54229

Dear Ms. Laatsch and Mr. Utrup:

RE: 2012 Noxious plants Monitoring Reports, Wausau and Jersey Hydroelectric Projects (FERC Project No. 1999 and FERC Project No. 2476)

Per the order a Amending Purple Loosestrife Monitoring Plan issued October 23, 2008, Wisconsin Public Service Corporation (WPS) is to provide annual updates on the *Galerucella sp.* beetles (beetles) release sites and purple loosestrife populations for a period of six years, beginning in 2009 to the Wisconsin Department of Natural Resources (WDNR) and the U.S. Fish and Wildlife Service (FWS) no later than October 31st of each year and to the Federal Energy Regulatory Commission (FERC) with agency comments no later than December 15th of each year.

Jersey Hydroelectric Project

In 2012, WPS released beetles that were reared on potted purple loosestrife plants. Approximately 2000 beetles were released on July 5, 2012.

A purple loosestrife survey was conducted at the Jersey Hydroelectric Project on July 31, 2012. The results of the survey indicated a total of twenty-one (21) purple loosestrife colonies within the project boundary. Beetle feeding was noted at nineteen (19) colonies. Heavy feeding (colonies with 75% to 100% of plants with active beetle feeding) was noted at fourteen (14) of those colonies. For comparison purposes, 2011 survey results noted a total of sixteen (16) purple loosestrife colonies. Beetle feeding was noted at fifteen (15) colonies with heavy feeding noted at eight (8) colonies.

The purple loosestrife figure and data sheet provide the location of the purple loosestrife, location of beetle feeding and the beetle release location. The figure and datasheet are located in Appendix A.

Wausau Hydroelectric Project

In 2012, WPS released beetles that were reared on potted purple loosestrife plants. Approximately 4000 beetles were released at the Wausau Hydroelectric Project on July 6, 2012.

WPS completed a purple loosestrife survey on August 3, 2012. The results of the survey indicated a total of fifteen (15) purple loosestrife colonies in the project boundary. Beetle feeding was noted at

ten (10) colonies. For comparison, the 2011 survey noted a total of eight (8) colonies. Beetle feeding was noted at six (6) colonies.

The purple loosestrife survey figure and datasheet provide the location of the purple loosestrife, location of beetle feeding and beetle release locations. The figure and data sheet are located in Appendix B.

If you have any comments regarding this report, please submit them within 30 days. If you have any questions feel free to contact me at 715-345-7509.

Sincerely,

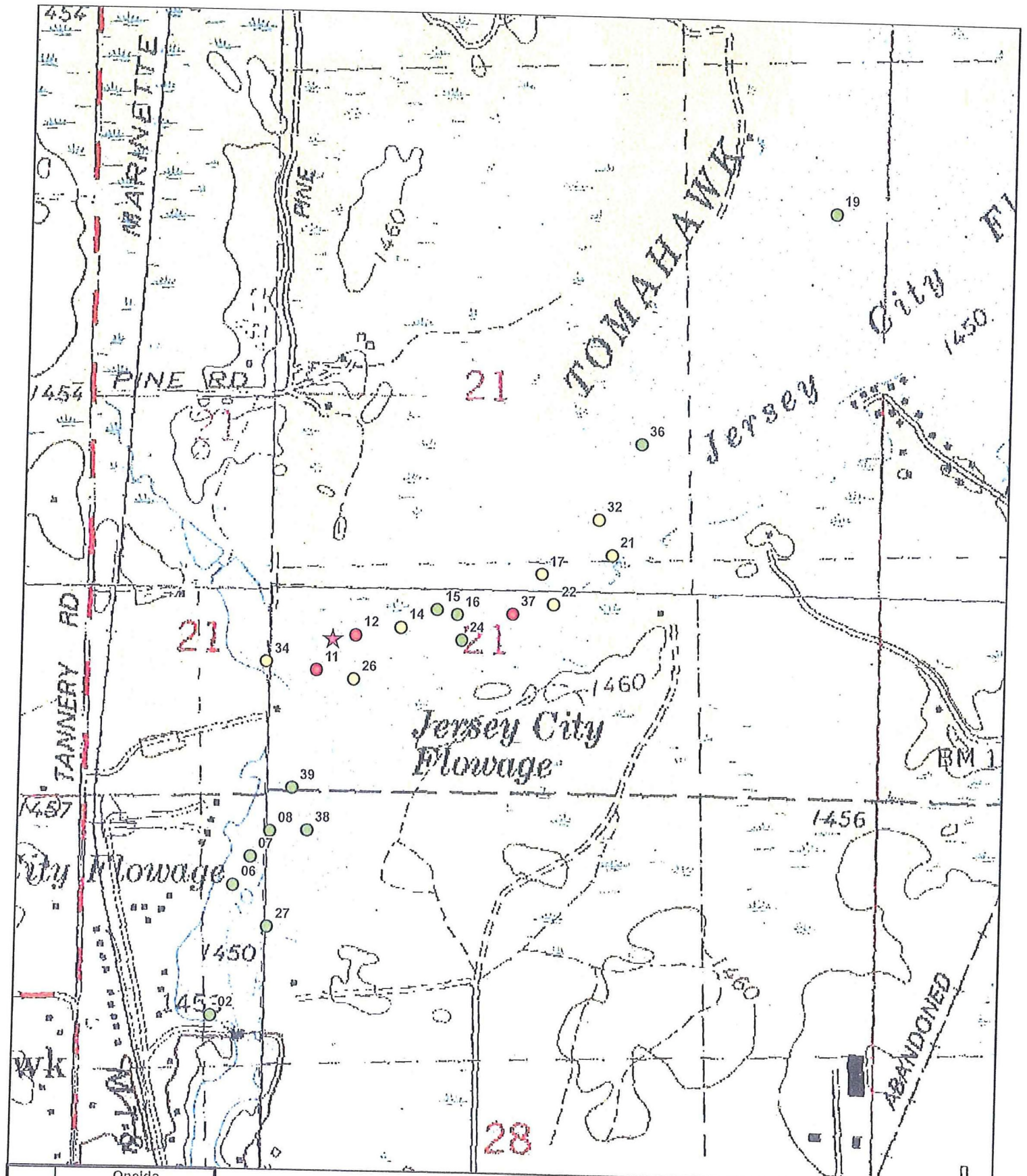
A handwritten signature in cursive script that reads "Darrin Johnson". The signature is written in black ink and is positioned above the printed name and title.

Darrin Johnson
Environmental Consultant-Shoreline Management

Enc.

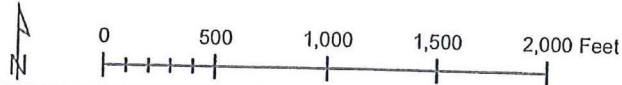
APPENDIX A

Jersey Flowage Purple Loosestrife Survey Results



Price	Onelda
Taylor	Lincoln
	Marathon

2012 Jersey Flowage Purple Loosestrife Survey



- ★ Beetle Release Site
- Purple Loosestrife**
- 0-5 Plants
- 6-50 Plants
- >50 Plants

Date: 10/15/2012

Purple Loosestrife Survey Form

Hydroelectric Project
 Inspection Date

J. R. Spivey
7/21/12

Colony Number	Colony Size S 0-5 M 6-50 L >50	General Plant Vigor			Total Plant Vigor 10-12=good 7-9=fair 4-6=poor 0-3=very poor	Notes	GPS Point
		Plant Height 4=>4ft 3=2-4ft 2=1-2 ft 1=<1 ft	Plant Flowering 4=100% of plants 3=51-99% of plants 2=26-50% of plants 1=<25% of plants	Beetle Feeding 4=0-25% feeding 3=26-50% feeding 2=51-75% feeding 1=76-100% feeding			
12	L	3	3	1	7	Heavy feed	JPL14
13	NO	PLANTS		NOTED			
14	M	4	3	1	8	Heavy Feeding	JPL15
15	S	4	3	1	8	Heavy feeding	JPL16
16	S	4	3	1	8	Heavy feeding	JPL17
17	M	4	2	1	7	Heavy feeding	JPL19
18	NO	PLANTS		Noted			
19	S	4	4	4	12	No feeding	JPL22
20	NO	PLANTS		NOTED			
21	M	3	4	2	9		JPL1
22	M	3	4	1	8	Heavy Feeding	JPL2

Purple Loosestrife Survey Form

Hydroelectric Project

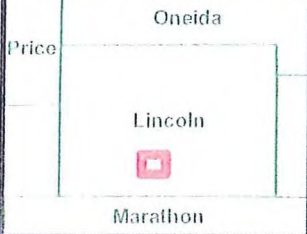
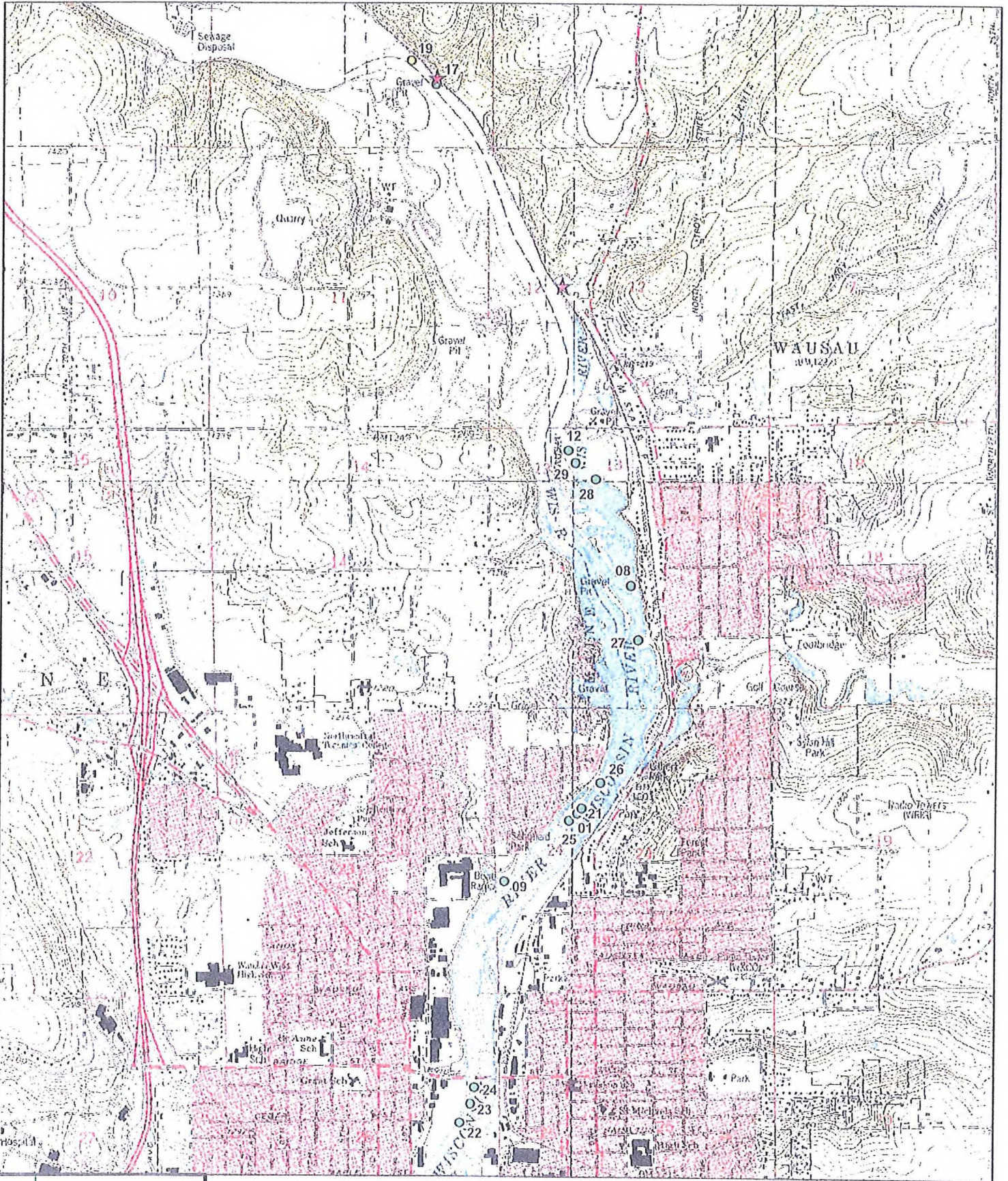
Inspection Date

Jervey
7/31/12

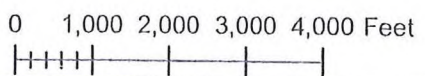
Colony Number	Colony Size S 0-5 M 6-50 L >50	General Plant Vigor			Total Plant Vigor 10-12=good 7-9=fair 4-6=poor 0-3=very poor	Notes	GPS Point
		Plant Height 4=>4ft 3=2-4ft 2=1-2 ft 1=<1 ft	Plant Flowering 4=100% of plants 3=51-99% of plants 2=26-50% of plants 1=<25% of plants	Beetle Feeding 4=0-25% feeding 3=26-50% feeding 2=51-75% feeding 1=76-100% feeding			
23	NO	PLANTS	Noted				
24	S	3	4	2	9	JPL3	
25	NO	PLANTS	NOTED				
26	M	4	3	1	8	Heavy Feeding JPL4	
27	S	3	4	4	11	NO Feeding JPL6	
28	NO	PLANTS	Noted				
29	NO	PLANTS	NOTED				
30	NO	PLANTS	Noted				
31	NO	PLANTS	Noted				
32	M	4	2	1	7	Heavy Feeding JPL20	
33	NO	PLANTS	NOTED				

APPENDIX B

Wausau Flowage Purple Loosestrife Survey Results



2012 Wausau Purple Loosestrife Survey



Date: 10/10/2012

- ★ Beetle Release Site
- Purple Loosestrife
- 0-5 Plants
- 6-50 Plants
- >50 Plants

Purple Loosestrife Survey Form

Hydroelectric Project Wauveilla
 Inspection Date 8/2/12

General Plant Vigor							
Colony Number	Colony Size S 0-5 M 6-50 L >50	Plant Height 4=>4ft 3=2-4ft 2=1-2 ft 1= <1 ft	Plant Flowering 4=100% of plants 3=51-99% of plants 2=26-50% of plants 1= <25% of plants	Beetle Feeding 4=0-25% feeding 3=26-50% feeding 2=51-75% feeding 1=76-100% feeding	Total Plant Vigor 10-12=good 7-9=fair 4-6=poor 0-3=very poor	Notes	GPS Point
1	S	4	4	4	12	No Feed	348
2	No	Plants	Noted				
3	No	Plants	Noted				
4	No	Plants	Noted				
5	No	Plants	Noted				
6	No	Plants	Noted				
7	No	Plants	Noted				
8	S	2	2	1	5		355
9	S	4	4	2	10		357
10	No	Plants	Noted				
11	No	Plants	Noted				

Purple Loosestrife Survey Form

Hydroelectric Project

Inspection Date

Wau Siku

8/3/12

Colony Number	Colony Size S 0-5 M 6-50 L >50	General Plant Vigor			Total Plant Vigor 10-12=good 7-9=fair 4-6=poor 0-3=very poor	Notes	GPS Point
		Plant Height 4=>4ft 3=2-4ft 2=1-2 ft 1= <1 ft	Plant Flowering 4=100% of plants 3=51-99% of plants 2=26-50% of plants 1= <25% of plants	Beetle Feeding 4=0-25% feeding 3=26-50% feeding 2=51-75% feeding 1=76-100% feeding			
12	S	4	3	2	9		357
13	NO	Plants	Noted				
14	NO	Plants	Noted				
15	NO	Plants	Noted				
16	NO	Plants	Noted				
17	S	3	4	2	9		194
18	NO	Plants	Noted				
19	M	3	4	2	9		195
20	NO	PLANTS	Noted				
21	S	4	4	4	12	No Feeding	349
22	S	4	4	4	12	No Feeding	344

No Comments Received from FWS

No Comments Received From WDNR

Document Content(s)

20121126 Wausau Jersey FERC Invasives letter.PDF.....	1-2
20121126 Wausau-Jersey Appendix A.PDF.....	3-8
20121126 Wausau-Jersey Appendix B.PDF.....	9-13
20121126 Wausau-Jersey Appendix C.PDF.....	14-29