

ORIGINAL

Domtar Industries Inc.
Nekoosa and Port Edwards Mills
100 Wisconsin River Drive
Port Edwards, WI 54469
Tel: (715) 887-5111

FILED
OFFICE OF THE
SECRETARY

2005 SEP 20 P 1:50

FEDERAL ENERGY
REGULATORY COMMISSION



September 12, 2005

Mr. Larry Thompson
U.S. Fish & Wildlife Service
Green Bay Field Office
2661 Scott Tower Drive
New Franken, WI 54229

Ms. Julia Stephenson
Wisconsin Department of Natural Resources
473 Griffith Avenue
Wisconsin Rapids, WI 54494

Dear Mr. Thompson and Ms. Stephenson:

Subject: Domtar Wisconsin Dam Corp.
FERC Projects 2255, 2291 and 2292
Centralia, Port Edwards, and Nekoosa Projects
Purple Loosetrife Monitoring

Attached is a report for purple loosetrife monitoring as required by Article 408 for projects 2255 and 2291, and by Article 407 for project 2292. A single report for the three projects has been prepared.

The survey was performed substantially as described in the plan submitted to the FERC Secretary on January 13, 1997, and as approved by FERC on July 16, 1997. The 2005 survey was performed during July and August as described in the report.

If there are any questions, please feel free to contact me at (715) 887-5155.

Sincerely,

Daniel O. Cummins, P.G.
Environmental Engineer

cc: Ms. Peggy A. Harding, Regional Engineer, Federal Energy Regulatory Commission,
Chicago Regional Office, 230 South Dearborn Street, Chicago, IL 60604

Mr. Magalie Salas, Secretary, Federal Energy Regulatory Commission, 888 First Street,
N.E., Washington, D.C. 20426

PURPLE LOOSESTRIFE MONITORING SURVEY FOR 2005

**DOMTAR WISCONSIN DAM CORP.
100 Wisconsin River Drive
Port Edwards, Wisconsin 54469**

By

**Dan Cummins, Environmental Engineer
Domtar Wisconsin Dam Corp.**

**FERC Projects
Centralia Dam – No. 2252
Port Edwards Dam – No. 2291
Nekoosa Dam – No. 2292**

BACKGROUND

During July and August 2005, Domtar conducted the annual purple loosestrife survey of project lands. Utilizing past survey maps and maps of the area, Domtar personnel conducted a survey for the presence of purple loosestrife plants. Observations were made along the Wisconsin River throughout Domtar's FERC permitted property.

Surveys have been conducted annually since 1997. As part of this report, a comparison will be made to the presence of purple loosestrife in 2005 to that seen in 2004.

Where practical, purple loosestrife plants were removed by hand.

DESCRIPTION OF THE PURPLE LOOSESTRIFE POPULATIONS IN 2005

Downstream of the Nekoosa Dam, loosestrife populations appear to have remained the same or increased slightly (Figure No. 1). There were a couple of locations along the left bank that appear to have increased with the loosestrife spreading over a larger area. The populations that have appeared on the non-project island immediately downstream of the Nekoosa Dam have decreased in their numbers and numbers of locations. One plant was found on the right bank downstream of the dam, at the Point Basse Park area. This plant was small and poorly developed. It was pulled.

Upstream of the Nekoosa Dam (Figure Nos. 1 and 2), purple loosestrife populations have remained essentially the same. Wherever there is an opening in the brush and shading vegetation along the shoreline, there is often one to several plants growing. These areas were not accessible and the plants could not be pulled. The island immediately upstream of the Nekoosa Dam had several healthy plants growing on the downstream point of the island. The bank along the mill, downstream of the Highway 73 bridge contained scattered populations of plants. The far bank is heavily forested to the water's edge and there were no purple loosestrife plants observed as in the past. This situation continues all the way through Port Edwards.

At Riverside Park in Nekoosa, the purple loosestrife population continues to thrive. Clusters of 5 and 6 plants are common. There was one cluster of plants extending for many feet along the bank at the park, with greater than 12 total plants. Several of the plants were pulled.

On the village side of the reservoir at Port Edwards (Figure 3) there were several clusters of plants as well as scattered single plants. There was one plant on the left bank of the reservoir. No plants were present on the island at the river channel. No plants were observed on the left bank of the river downstream of the Port Edwards Dam, except at the dam. On the left bank immediately downstream of the Port Dam there was a new cluster of 8 or more plants. On the island immediately downstream of the Port Edwards Dam there continued to be healthy clusters of plants.

Upstream of the Port Edwards Dam (Figure No. 3) purple loosestrife seems to thin considerably continuing the trend from past surveys. Only a few plants were noted here and there, with one 5 plant cluster on a small island. This heavily vegetated portion of the river does not appear to be conducive to purple loosestrife and is similar to past survey results.

At the Centralia Dam (Figure 4), purple loosestrife exists on both the upstream and downstream portions of the dam approaches. These cleared areas are very conducive to purple loosestrife and it continues to thrive here. Upstream of the Centralia Dam on the right bank there were occasional plants with only one cluster of several plants present at Boles Creek. This is similar to what has been seen over the last several years. At the mouth of the creek across from Garrison Island, there were fewer plants than last time. A cluster of 4 plants could be observed.

Continuing upstream at Hansen Park (the right bank of the Wisconsin River) there were several small clusters of plants and many single plants. Several of these were removed. There appeared to be fewer overall plants this year compared with what was observed last year. This may very well be due to the hand removal effort from last year.

Continuing upstream into the City of Wisconsin Rapids (Figure No. 5) there were several locations of single and double plants. However, there were fewer overall plants on the islands and rocky shoreline.

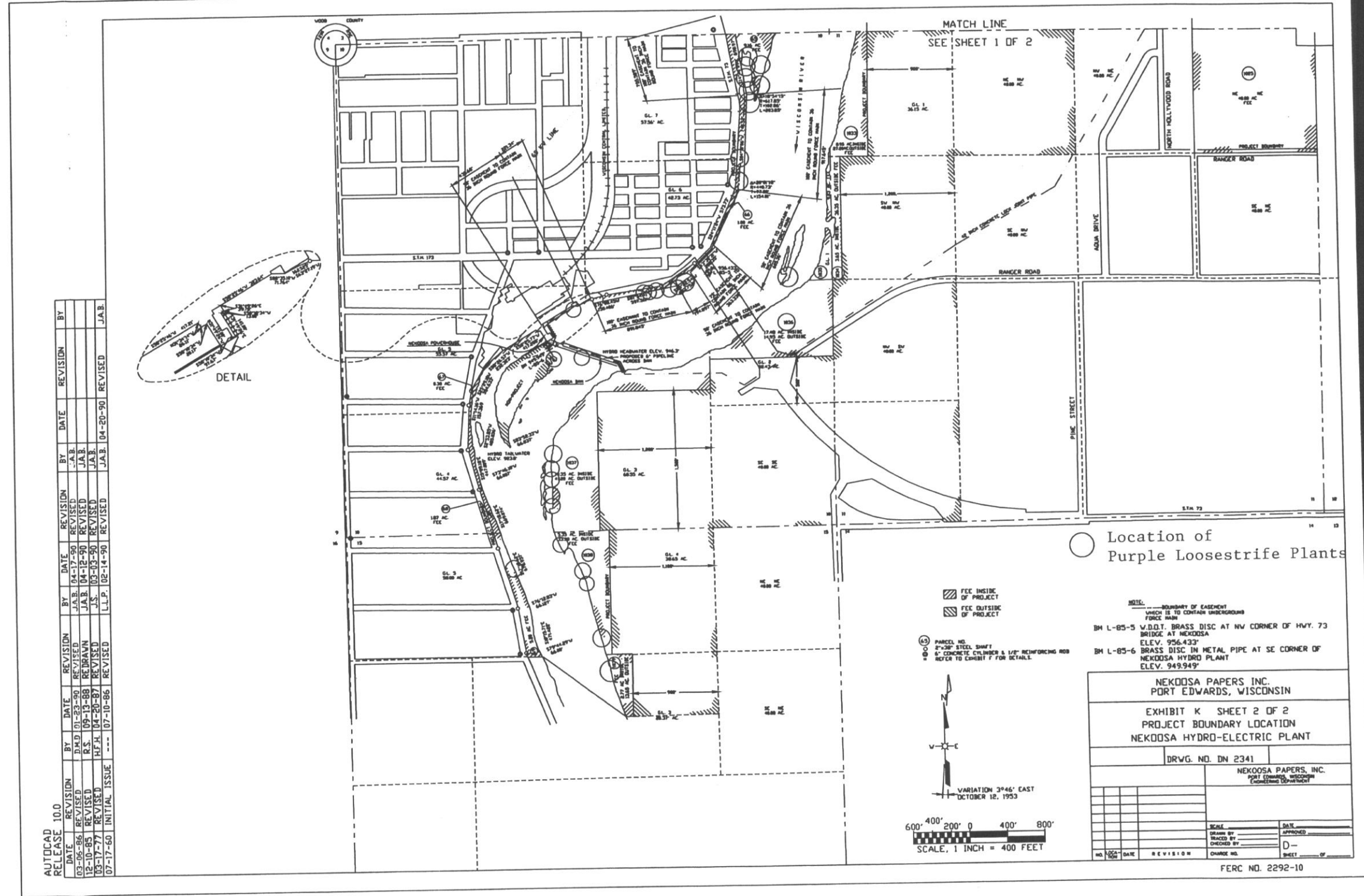
The property for the electrical transmission lines (Figure No. 6) continues to be free of purple loosestrife plants.

CONCLUSIONS

As with previous reports, the net presence of purple loosestrife has remained the same or increased only slightly over the past year on Domtar's FERC permitted property. Where some areas have experienced an increase in the numbers of plants present, other locations have seen a decrease. Downstream of the Nekoosa Dam there may have been a net increase in the presence of purple loosestrife. Whereas upstream of the Centralia Dam and into the City of Wisconsin Rapids, there were fewer overall plants and the clusters of plants were fewer.

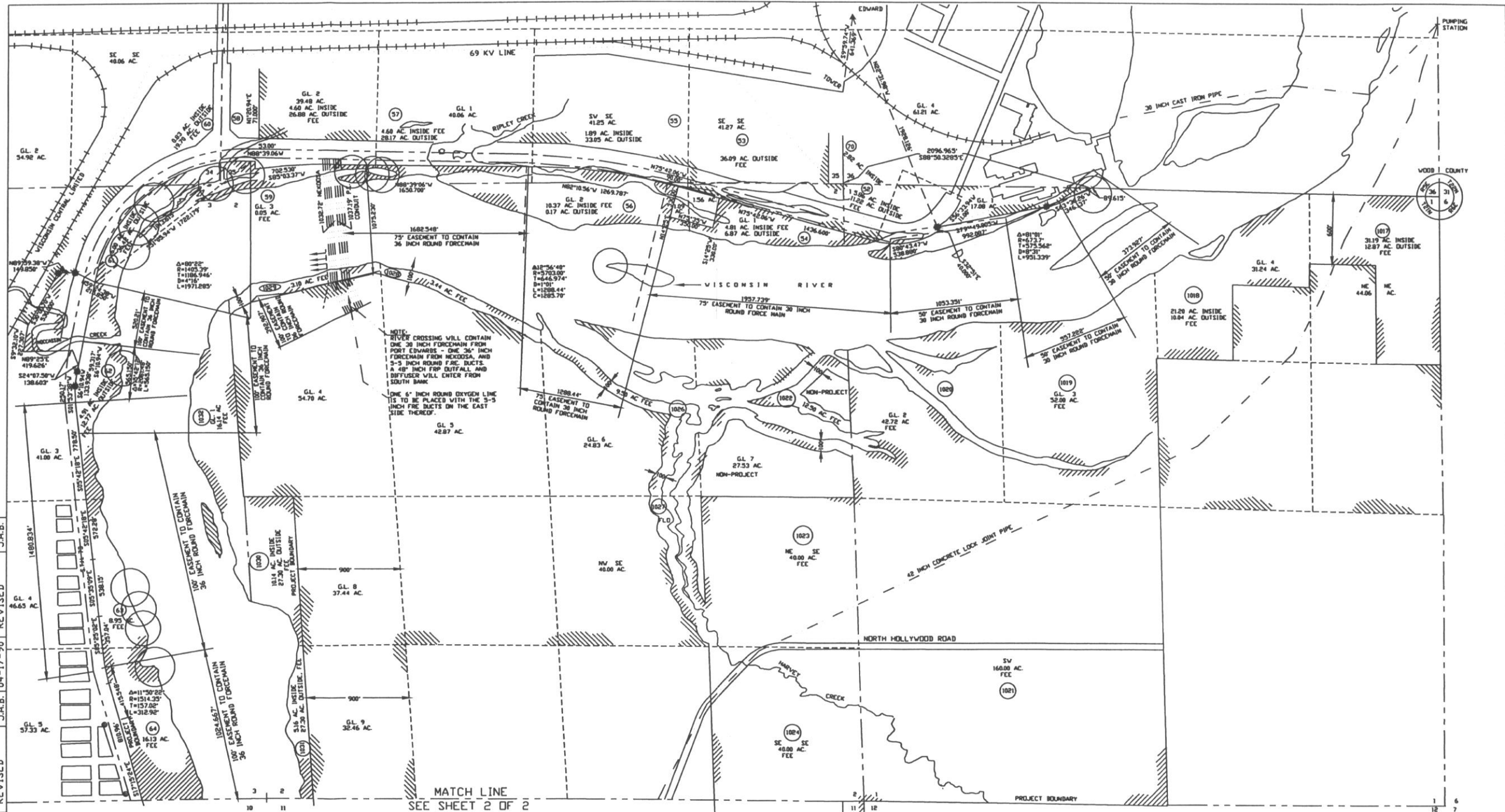
FILED
OFFICE OF THE
SECRETARY
2005 SEP 20 P 1:50
FEDERAL ENERGY
REGULATORY COMMISSION

FIGURE 1



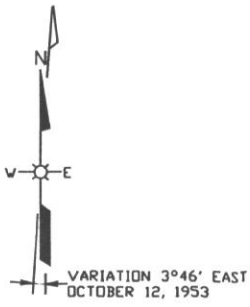
Public
0509210109-001

FIGURE 2



AUTOCAD RELEASE 10.0

DATE	REVISION	BY	DATE	REVISION	BY
02-14-90	REVISED	J.A.B.	04-12-90	REVISED	J.A.B.
09-13-88	REDRAWN	J.A.B.	03-03-90	REVISED	J.A.B.
03-01-80	INITIAL ISSUE	---	01-23-90	REVISED	J.A.B.

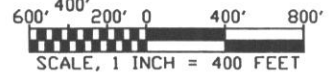


MATCH LINE
SEE SHEET 2 OF 2

2" x 30" STEEL SHAFT
6" CONCRETE CYLINDER & 1/2" REINFORCING ROD
REFER TO EXHIBIT F FOR DETAILS

○ Location of Purple Loosestrife Plants

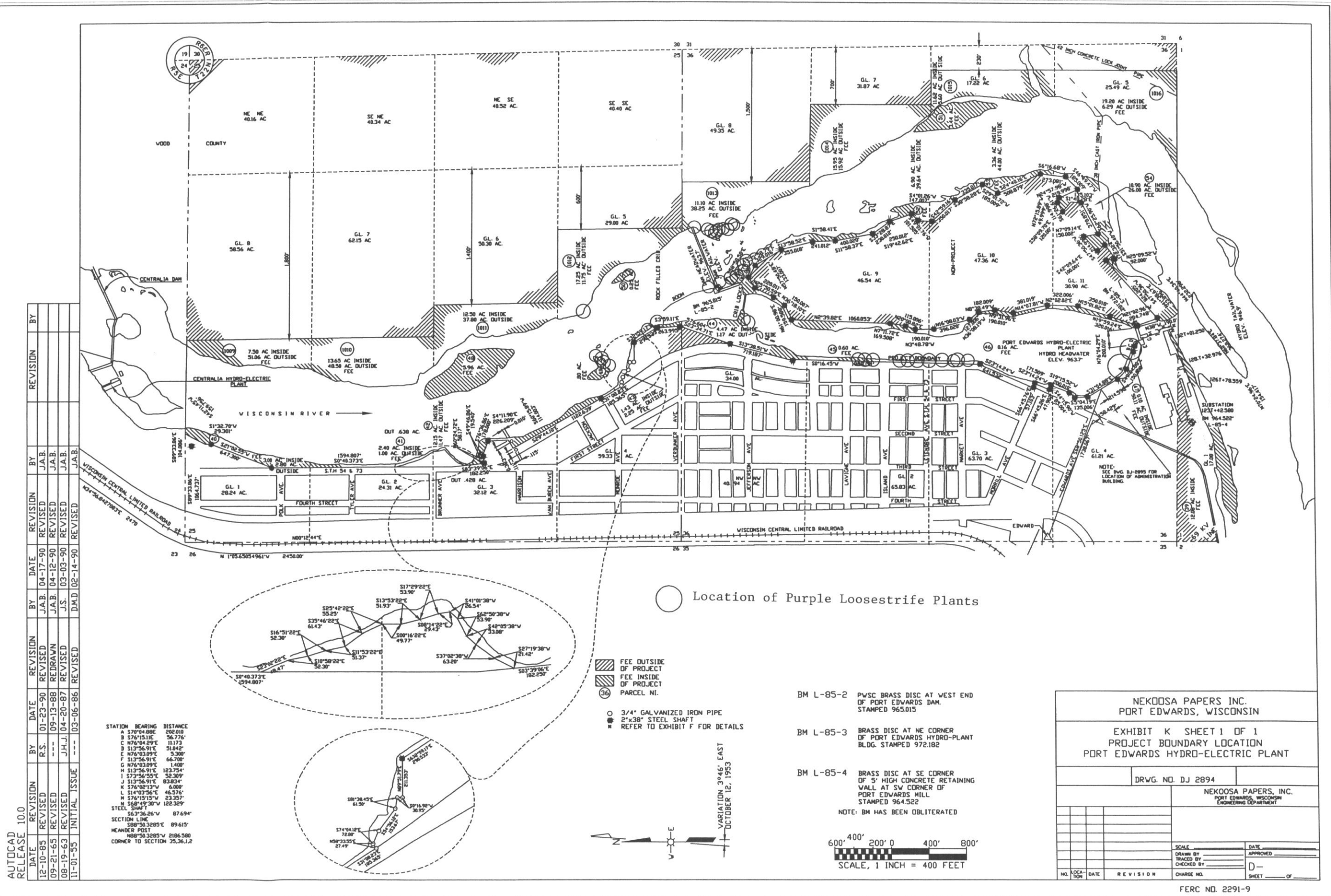
▨ FEE INSIDE OF PROJECT
▩ FEE OUTSIDE OF PROJECT
○ PARCEL NO.



NEKOOSA PAPERS INC. PORT EDWARDS, WISCONSIN	
EXHIBIT K SHEET 1 OF 2 PROJECT BOUNDARY LOCATION NEKOOSA HYDRO-ELECTRIC PLANT	
DRWG. NO. DN-2740	NEKOOSA PAPERS, INC. PORT EDWARDS, WISCONSIN ENGINEERING DEPARTMENT
SCALE _____	DATE _____
DRAWN BY _____	APPROVED _____
TRACED BY _____	CHECKED BY _____
NO. _____	DATE _____
REVISION _____	CHARGE NO. _____
SHEET _____ OF _____	

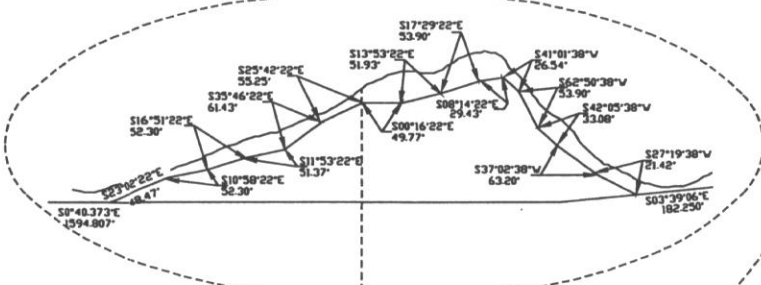
0509210109-002

FIGURE 3



DATE	REVISION	BY	DATE	REVISION	BY
12-10-85	REVISED	R.S.	01-23-90	REVISED	J.A.B.
09-21-85	REVISED	---	09-13-88	REVISED	J.A.B.
08-19-63	REVISED	J.H.J.	04-20-87	REVISED	J.A.B.
11-01-55	INITIAL ISSUE	---	03-06-86	REVISED	J.A.B.

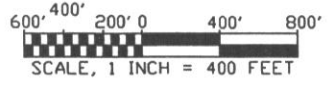
STATION	BEARING	DISTANCE
A	S78°04'08"E	202.018
B	S78°15'11"E	56.776
C	N76°04'29"E	11.173
D	S17°36'91"E	51.842
E	N76°03'09"E	5.300
F	S17°36'91"E	66.700
G	N76°03'09"E	1.400
H	S17°36'91"E	123.754
I	S73°36'55"E	52.309
J	S17°36'91"E	83.834
K	S74°02'12"E	6.000
L	S14°03'36"E	46.576
M	S74°15'15"E	23.357
N	S68°45'30"E	152.329
STEEL SHAFT	S63°36'26"E	87.694
SECTION LINE	S88°50'32"E	89.615
HEADER POST	N08°50'32"E	2186.500
CORNER TO SECTION 35.36.12		



- FEE OUTSIDE OF PROJECT
- FEE INSIDE OF PROJECT
- PARCEL NO.
- 3/4" GALVANIZED IRON PIPE
- 2"x38" STEEL SHAFT
- REFER TO EXHIBIT F FOR DETAILS

○ Location of Purple Loosestrife Plants

- BM L-85-2 PVSC BRASS DISC AT WEST END OF PORT EDWARDS DAM. STAMPED 965.015
 - BM L-85-3 BRASS DISC AT NE CORNER OF PORT EDWARDS HYDRO-PLANT BLDG. STAMPED 972.182
 - BM L-85-4 BRASS DISC AT SE CORNER OF 5' HIGH CONCRETE RETAINING WALL AT SW CORNER OF PORT EDWARDS MILL STAMPED 964.522
- NOTE: BM HAS BEEN OBLITERATED



NEKOOSA PAPERS INC. PORT EDWARDS, WISCONSIN	
EXHIBIT K SHEET 1 OF 1 PROJECT BOUNDARY LOCATION PORT EDWARDS HYDRO-ELECTRIC PLANT	
DRWG. NO. DJ 2894	
NEKOOSA PAPERS, INC. PORT EDWARDS, WISCONSIN ENGINEERING DEPARTMENT	
SCALE	DATE
DRAWN BY	APPROVED
TRACED BY	CHECKED BY
NO. LOCATION	DATE
REVISION	CHARGE NO.
	SHEET
	OF

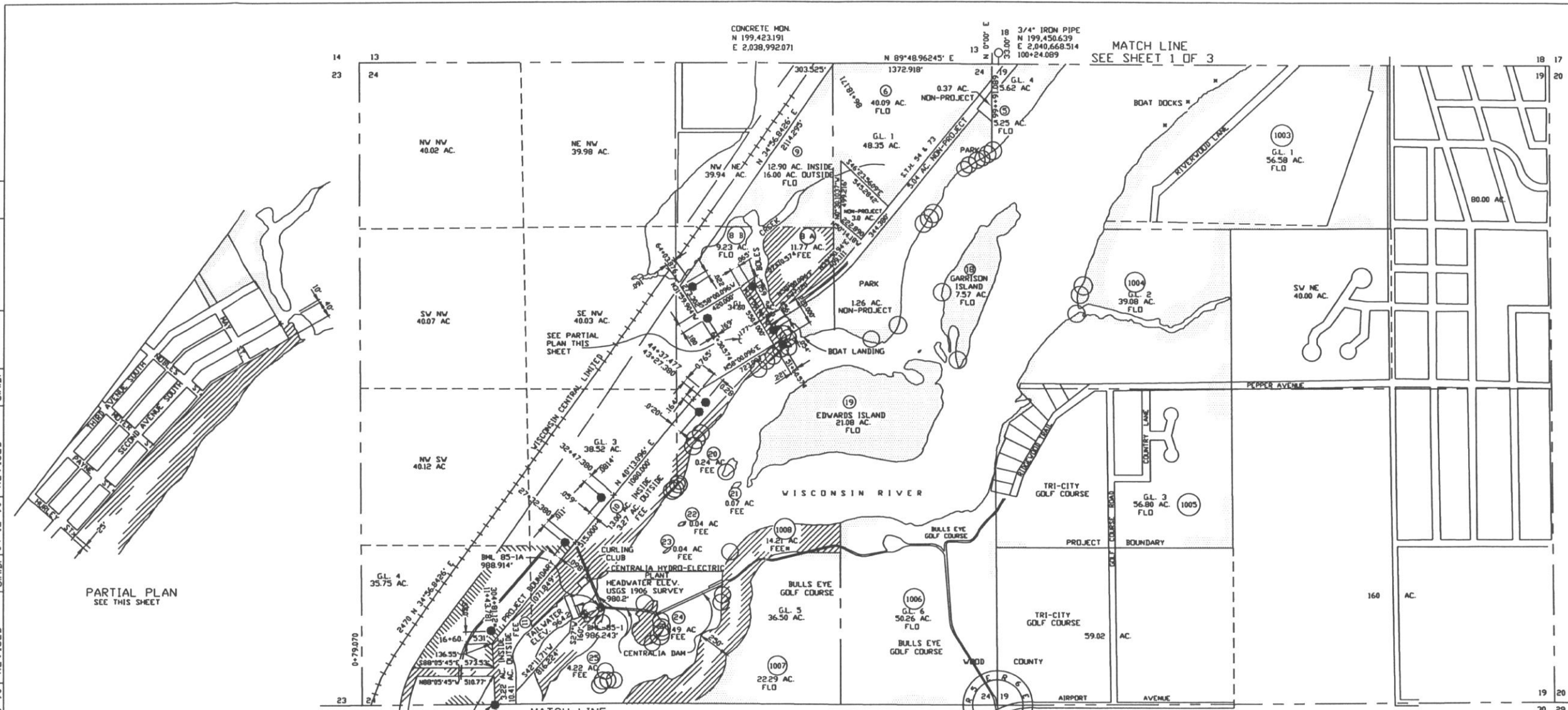
FERC NO. 2291-9

0509210109-003

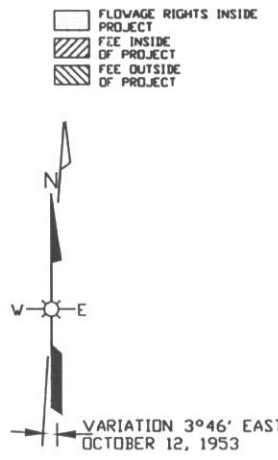
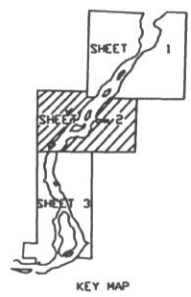
FIGURE 4

DATE	REVISION	BY	DATE	REVISION	BY
03-06-86	REVISED	DMD	09-13-88	REDAWN	J.A.B.
12-10-85	REVISED	R.S.	04-20-87	REVISED	J.S.
01-30-87	INITIAL ISSUE	---	07-10-86	REDAWN	L.L.P.
			01-23-90	REVISED	J.A.B.
			04-12-90	REVISED	J.A.B.
			04-17-90	REVISED	J.A.B.
			04-20-90	REVISED	J.A.B.

AUTOCAD
RELEASE 10.0



PARTIAL PLAN
SEE THIS SHEET



○ Location of Purple Loosestrife Plants

BM-L-85-1
RAILROAD SPIKE IN N. SIDE OF
36" MAPLE TREE, 50' NORTH OF
NE CORNER OF POWER PLANT BLDG.
ELEV. 986.243
BM-L-85-1A
2" BRASS DISC ON WEST WINGWALL
AT SOUTH SIDE OF BRIDGE TO
HYDRO-PLANT
ELEV. 988.914
20 PARCEL NO.
2" x 30" STEEL SHAFT ON RANDOM TRAVERSE
IRON PIPE
CONCRETE MONUMENT

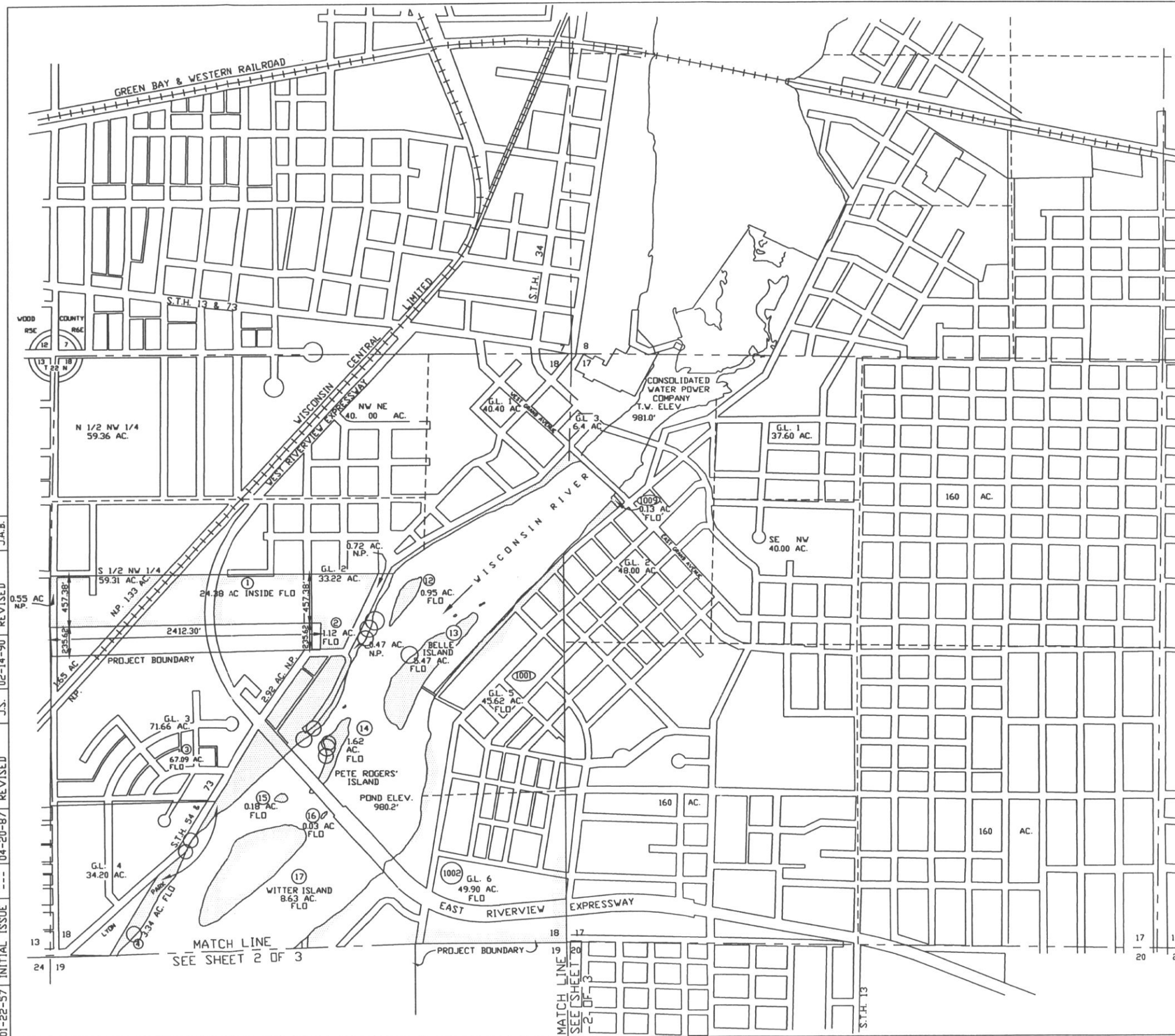
600' 400' 200' 0 400' 800'
SCALE, 1 INCH = 400 FEET

NEKOOSA PAPERS INC. PORT EDWARDS, WISCONSIN	
EXHIBIT K SHEET 2 OF 3 PROJECT BOUNDARY LOCATION CENTRALIA HYDRO-ELECTRIC PLANT	
DRWG. NO. DC-306	
NEKOOSA PAPERS, INC. PORT EDWARDS, WISCONSIN ENGINEERING DEPARTMENT	
SCALE	DATE
DRAWN BY	APPROVED
TRACED BY	D-
CHECKED BY	
NO.	DATE
REVISION	CHARGE NO.
SHEET _____ OF _____	

FERC NO. 2255-10

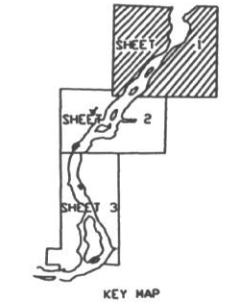
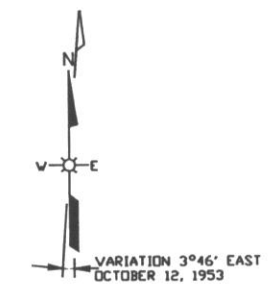
0509210109-001

FIGURE 5



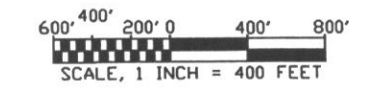
AUTOCAD RELEASE 10.0

DATE	REVISION	BY	DATE	REVISION	BY
07-10-86	REVISED	L.L.P.	01-23-90	REVISED	J.A.B.
12-10-85	REVISED	R.S.	09-13-88	REDRAWN	J.A.B.
01-22-57	INITIAL ISSUE	---	04-20-87	REVISED	J.S.



○ Location of Purple Loosestrife Plants

▭ FLOWAGE RIGHTS
 27 PARCEL NO.
 * REFER TO EXHIBIT F FOR DETAILS



NEKOOSA PAPERS INC. PORT EDWARDS, WISCONSIN	
EXHIBIT K SHEET 1 OF 3 PROJECT BOUNDARY LOCATION CENTRALIA HYDRO-ELECTRIC PLANT	
DRWG. NO. DC-305	
NEKOOSA PAPERS, INC. PORT EDWARDS, WISCONSIN ENGINEERING DEPARTMENT	
SCALE _____	DATE _____
DRAWN BY _____	APPROVED _____
TRACED BY _____	D- _____
CHECKED BY _____	SHEET _____ OF _____
NO. _____	CHARGE NO. _____
DATE _____	REVISION _____

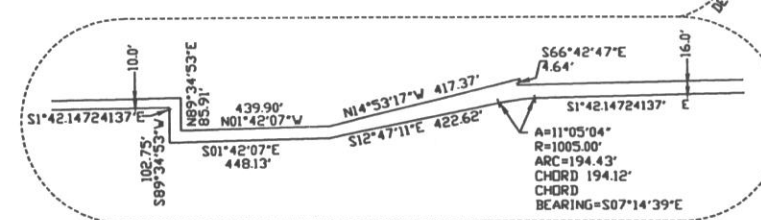
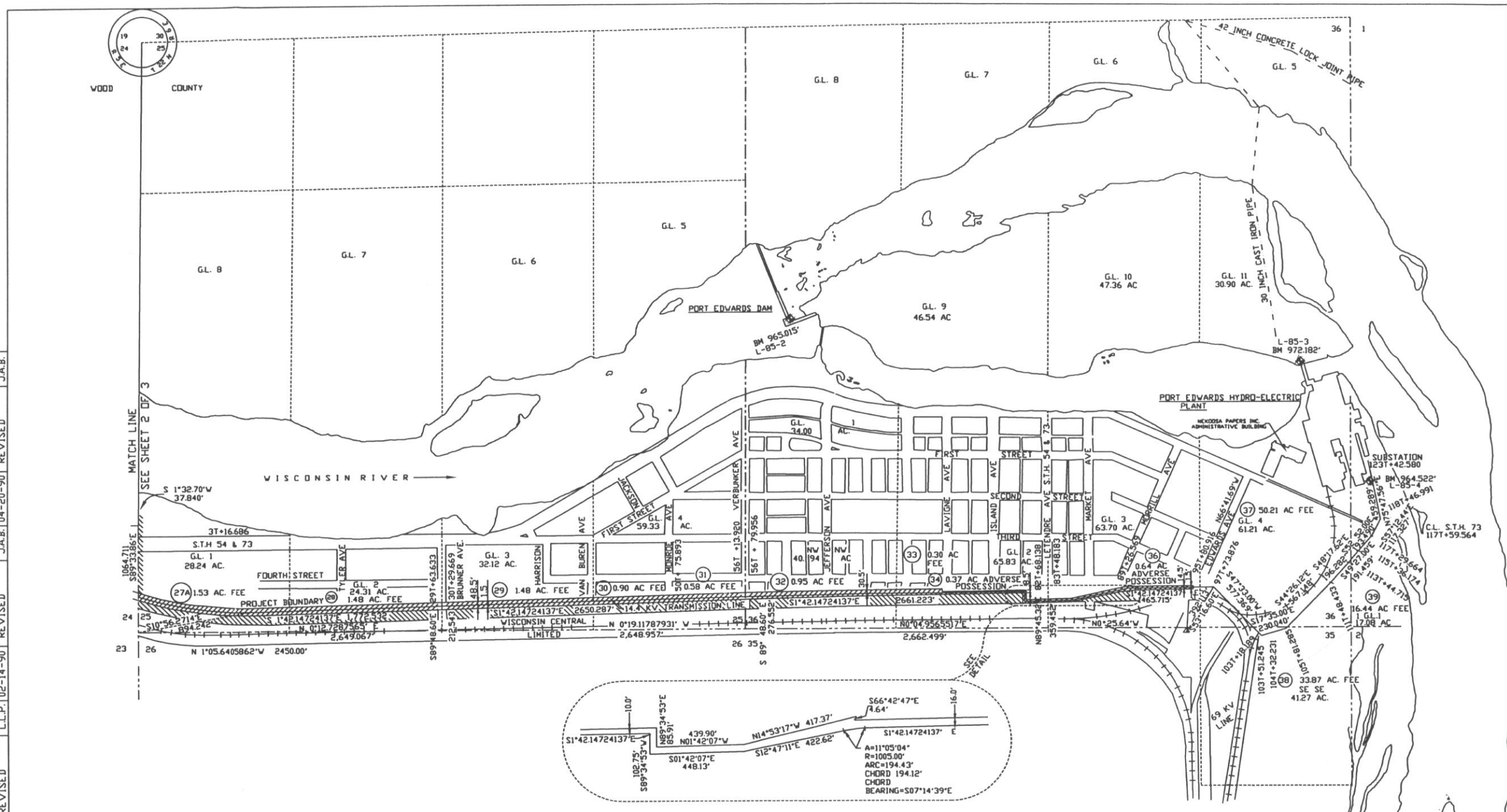
FERC NO. 2255-9

0509210109-005

FIGURE 6

DATE	REVISION	BY	DATE	REVISION	BY	DATE	REVISION	BY
03-06-86	REVISED	D.M.D.	01-23-90	REVISED	J.A.B.	04-17-90	REVISED	J.A.B.
12-10-85	REVISED	R.S.	09-13-88	REDAWN	J.A.B.	04-12-90	REVISED	J.A.B.
07-63	REVISED	R.R.J.	04-20-87	REVISED	J.S.	03-03-90	REVISED	J.A.B.
02-12-57	INITIAL ISSUE	---	07-10-86	REVISED	L.L.P.	02-14-90	REVISED	J.A.B.

AUTOCAD RELEASE 10.0



36 PARCEL NO.
2"x30" STEEL SHAFT
REFER TO EXHIBIT F FOR DETAILS
NOTE: TRANSMISSION LINE IS 3 FEET LEFT OF
TRANSIT LINE SHOWN

▨ FEE INSIDE OF PROJECT
▨ FEE OUTSIDE OF PROJECT

- BM L-85-2 PVSC BRASS DISC AT WEST END OF PORT EDWARDS DAM. STAMPED 965.015
- BM L-85-3 BRASS DISC AT NE CORNER OF PORT EDWARDS HYDRO-PLANT BLDG. STAMPED 972.182
- BM L-85-4 BRASS DISC AT SE CORNER OF 5' HIGH CONCRETE RETAINING WALL AT SW CORNER OF PORT EDWARDS MILL. STAMPED 964.522

NOTE: BM HAS BEEN OBLITERATED
SCALE, 1 INCH = 400 FEET

NEKOOSA PAPERS INC.
PORT EDWARDS, WISCONSIN

EXHIBIT K SHEET 3 OF 3
PROJECT BOUNDARY LOCATION
CENTRALIA HYDRO-ELECTRIC PLANT

DRWG. NO. DC-307

NEKOOSA PAPERS, INC.
PORT EDWARDS, WISCONSIN
ENGINEERING DEPARTMENT

NO.	LOCATION	DATE	REVISION	CHARGE NO.	SCALE	DATE

DRAWN BY: _____
TRACED BY: _____
CHECKED BY: _____
DATE: _____
APPROVED: _____
SHEET _____ OF _____

FERC NO. 2255-11

0509210109-006