

Domtar Industries Inc
Nekoosa and Port Edwards Mills
100 Wisconsin River Drive
Port Edwards, WI 54469
Tel: (715) 887-5111



FILED
OFFICE OF THE
SECRETARY

2007 SEP 19 P 2: 35

FEDERAL ENERGY
REGULATORY COMMISSION

September 14, 2007

Mr. Tyler Yasenak
U.S. Fish & Wildlife Service
Green Bay Field Office
2661 Scott Tower Drive
New Franken, WI 54229

Ms. Julia Stephenson
Wisconsin Department of Natural Resources
473 Griffith Avenue
Wisconsin Rapids, WI 54494

P-2255-083
P-2291-120
P-2292-085

Dear Mr. Yasenak and Ms. Stephenson:

Subject: Domtar Wisconsin Dam Corp.
FERC Projects 2255, 2291 and 2292
Centralia, Port Edwards, and Nekoosa Projects
Purple Loosestrife Monitoring

Attached is a report for purple loosestrife monitoring as required by Article 408 for projects 2255 and 2291, and by Article 407 for project 2292. A single report for the three projects has been prepared.

The survey was performed substantially as described in the plan submitted to the FERC Secretary on January 13, 1997, and as approved by FERC on July 16, 1997. The 2007 survey was performed during July and August as described in the report.

If there are any questions, please feel free to contact me at (715) 887-5155.

Sincerely,

Daniel O. Cummins, P.G.
Environmental Engineer

cc: Ms. Peggy A. Harding, Regional Engineer, Federal Energy Regulatory Commission,
Chicago Regional Office, 230 South Dearborn Street, Chicago, IL 60604

Mr. Magalie Salas, Secretary, Federal Energy Regulatory Commission, 888 First Street,
N.E., Washington, D.C. 20426

PURPLE LOOSESTRIFE MONITORING SURVEY FOR 2007

**DOMTAR WISCONSIN DAM CORP.
100 Wisconsin River Drive
Port Edwards, Wisconsin 54469**

By

**Dan Cummins, Environmental Engineer
Domtar Wisconsin Dam Corp.**

**FERC Projects
Centralia Dam – No. 2252
Port Edwards Dam – No. 2291
Nekoosa Dam – No. 2292**

BACKGROUND

During July and August 2007, Domtar conducted the annual purple loosestrife survey of project lands. Utilizing past survey maps and maps of the area, Domtar personnel conducted a survey for the presence of purple loosestrife plants. Observations were made along the Wisconsin River throughout Domtar's FERC permitted property.

Surveys have been conducted annually since 1997. As part of this report, a comparison will be made to the presence of purple loosestrife in 2007 to that seen in 2006.

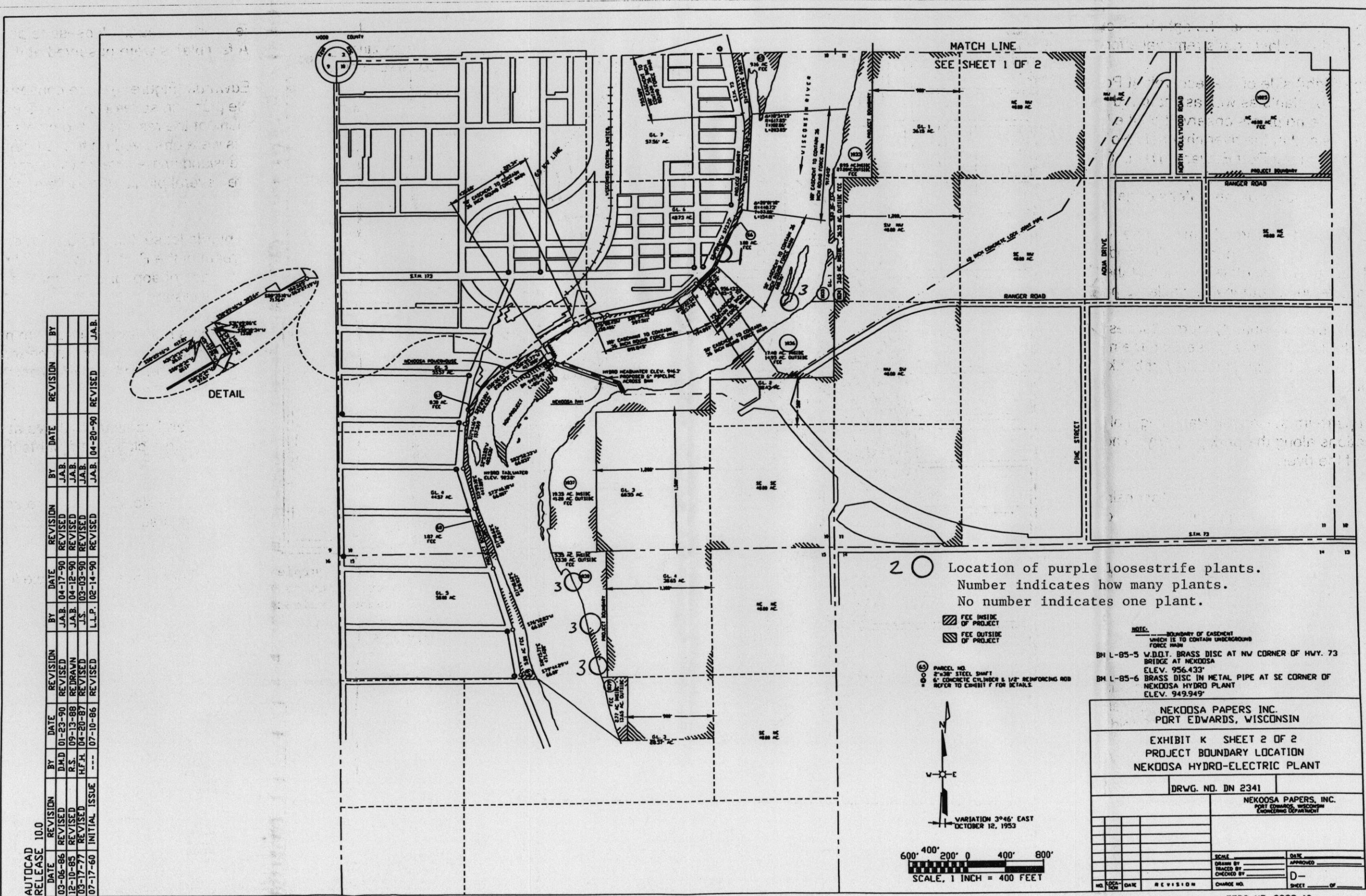
Where practical, purple loosestrife plants were removed by hand. In a cooperative effort with the Village of Port Edwards to control invasive species, Domtar removed a significant number of plants from project lands at our Port Edwards facilities in 2006. Estimates range to over 350 plants removed and hauled away for landfill disposal.

DESCRIPTION OF THE PURPLE LOOSESTRIFE POPULATIONS IN 2007

Downstream of the Nekoosa Dam, loosestrife populations appear to have decreased slightly from last year (Figure No. 1). The purple loosestrife population along the left bank appears to have stabilized to some degree and the only larger accumulations of plants did not develop this year possibly due to some water level fluctuations and wave action. The populations that have appeared on the non-project island immediately downstream of the Nekoosa Dam have remained approximately the same. There were no purple loosestrife plants observed on the dam this year. There were no plants observed on the right bank of the river, at and near the Point Basse Park.

Upstream of the Nekoosa Dam (Figure Nos. 1 and 2), purple loosestrife populations have decreased dramatically due to last year's removal effort. The island immediately upstream of the Nekoosa Dam continued to have several healthy plants growing on the downstream point

FIGURE 1
2007 PURPLE LOOSESTRIPE SURVEY

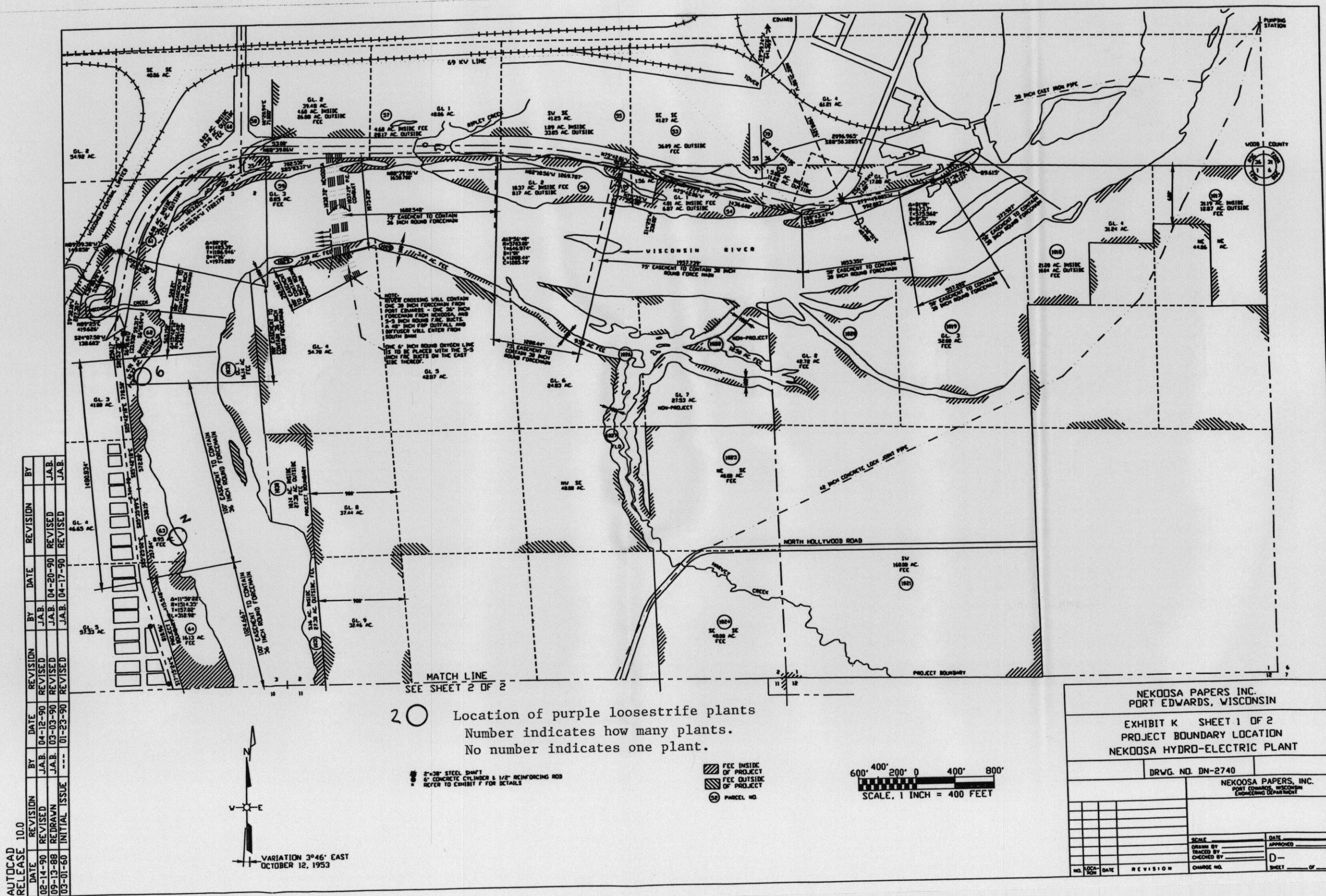


AUTOCAD RELEASE 10.0

DATE	REVISION	BY	DATE	REVISION	BY	DATE	REVISION	BY
03-06-86	REVISED	D.H.D.	01-23-90	REVISED	J.A.B.	04-17-90	REVISED	J.A.B.
12-10-85	REVISED	R.S.	09-13-88	RE-DRAWN	J.A.B.	04-12-90	REVISED	J.A.B.
03-17-77	REVISED	H.F.H.	04-20-87	REVISED	J.S.	03-03-90	REVISED	J.A.B.
07-17-60	INITIAL ISSUE	---	07-10-86	REVISED	L.L.P.	02-14-90	REVISED	J.A.B.
					J.A.B.	04-20-90	REVISED	J.A.B.

Public
20070926.0136.001

FIGURE 2
2007 PURPLE LOOSESTRIPE SURVEY



AUTOCAD RELEASE 10.0

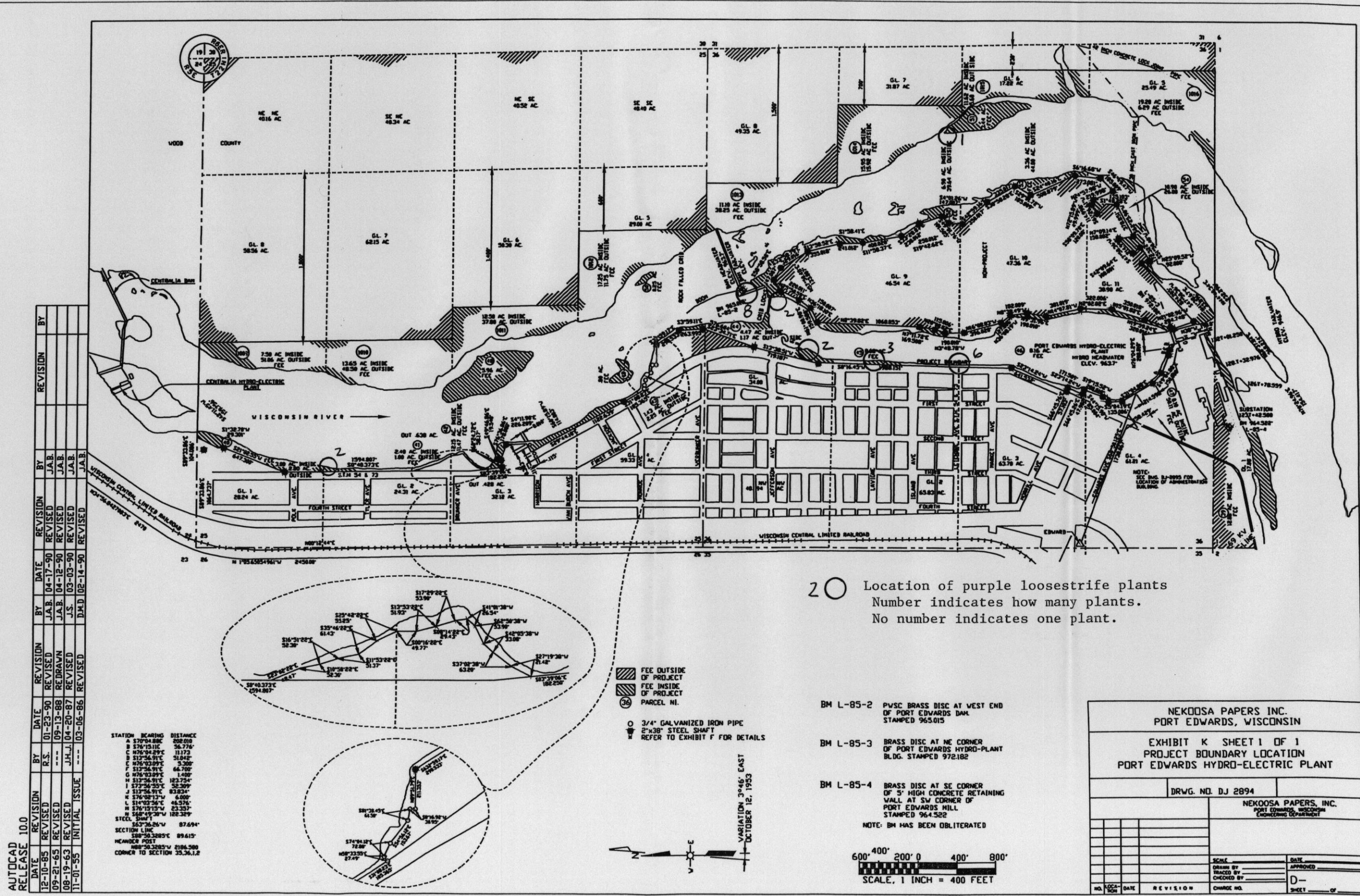
DATE	REVISION	BY	DATE	REVISION	BY
02-14-90	REVISED	J.A.B.	04-12-90	REVISED	J.A.B.
09-13-88	REDRAWN	J.A.B.	03-03-90	REVISED	J.A.B.
03-01-60	INITIAL ISSUE	---	01-23-90	REVISED	J.A.B.

20 Location of purple loosestrife plants
Number indicates how many plants.
No number indicates one plant.

NEKOOSA PAPERS INC. PORT EDWARDS, WISCONSIN	
EXHIBIT K SHEET 1 OF 2 PROJECT BOUNDARY LOCATION NEKOOSA HYDRO-ELECTRIC PLANT	
DRWG. NO. DN-2740	NEKOOSA PAPERS, INC. PORT EDWARDS, WISCONSIN <small>(continued on next sheet)</small>
SCALE	DATE
DRAWN BY	APPROVED
TRACED BY	D-
CHECKED BY	
NO.	DATE
REVISION	CHARGE NO.
	SHEET

20070926-0136-002

FIGURE 3
2007 PURPLE LOOSESTRIPE SURVEY



AUTOCAD RELEASE 10.0

DATE	REVISION	BY	DATE	REVISION	BY
12-10-85	REVISED	J.A.B.	01-23-90	REVISED	J.A.B.
09-21-85	REVISED	J.A.B.	04-17-90	REVISED	J.A.B.
08-19-83	REVISED	J.H.J.	04-12-90	REVISED	J.A.B.
11-01-85	INITIAL ISSUE	D.H.D.	02-14-90	REVISED	J.A.B.

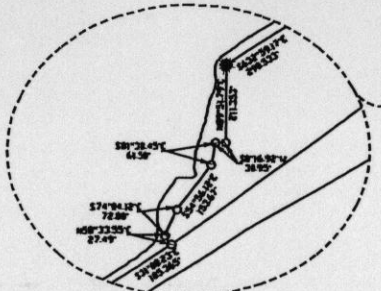
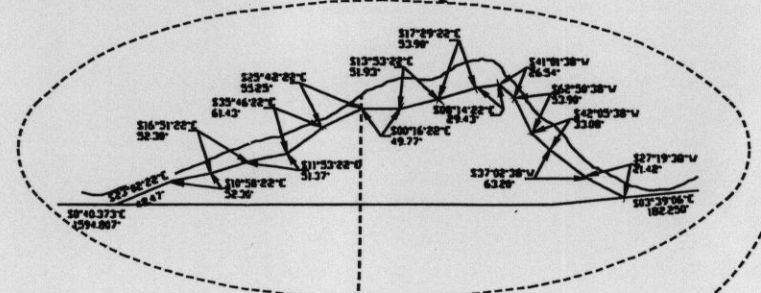
STATION	BEARING	DISTANCE
A	S79°04'00"E	200.010
B	S78°15'11"E	56.776
C	N76°04'29"E	11.173
D	S73°56'31"E	51.042
E	N76°02'59"E	5.200
F	S73°56'31"E	64.700
G	N76°02'59"E	1.400
H	S73°56'31"E	182.754
I	S73°56'31"E	52.309
J	S73°56'31"E	63.824
K	S76°02'12"E	6.000
L	S74°02'36"E	46.576
M	S76°15'17"E	23.357
N	S68°07'39"E	182.329

STEEL SHAF
S63°36'26"W 87.694'

SECTION LINK
S80°50'32"E 89.615'

MEASUR POST
N88°50'32"E 2186.580'

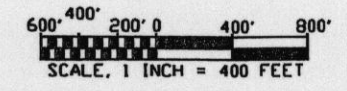
CORNER TO SECTION 35.36.12



- FEE OUTSIDE OF PROJECT
- FEE INSIDE OF PROJECT
- PARCEL NO.
- 3/4" GALVANIZED IRON PIPE
- 2"x38" STEEL SHAFT
- REFER TO EXHIBIT F FOR DETAILS

20 Location of purple loosestrife plants
Number indicates how many plants.
No number indicates one plant.

- BM L-85-2 PVC BRASS DISC AT WEST END OF PORT EDWARDS DAM. STAMPED 965.015
 - BM L-85-3 BRASS DISC AT NE CORNER OF PORT EDWARDS HYDRO-PLANT BLDG. STAMPED 972.182
 - BM L-85-4 BRASS DISC AT SE CORNER OF 5' HIGH CONCRETE RETAINING WALL AT SW CORNER OF PORT EDWARDS HILL. STAMPED 964.522
- NOTE: BM HAS BEEN OBLITERATED



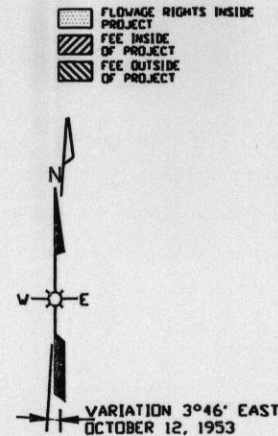
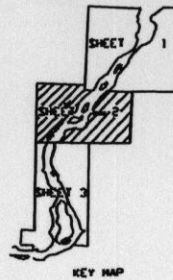
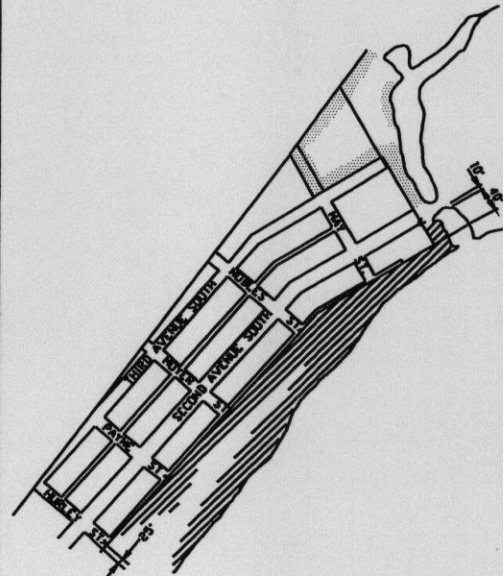
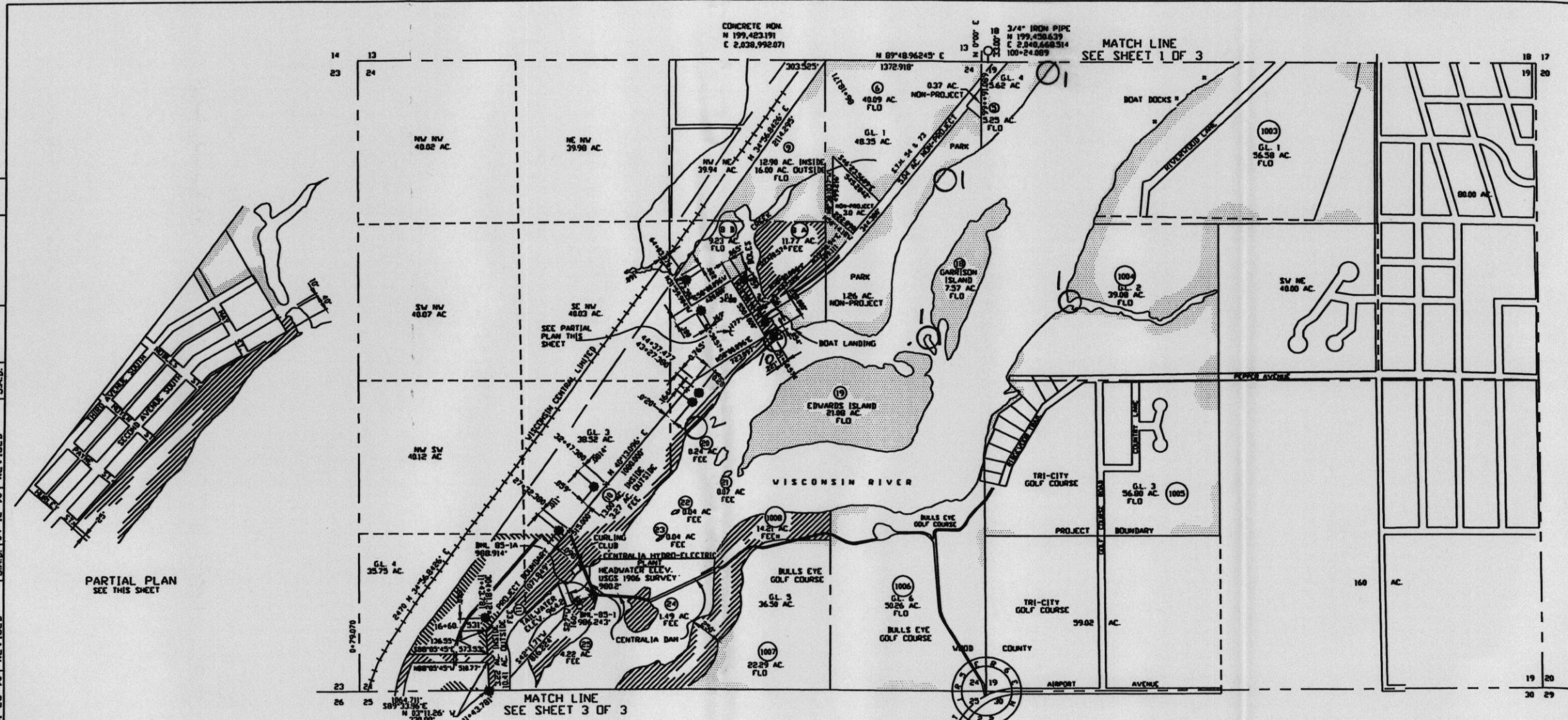
NEKOOSA PAPERS INC. PORT EDWARDS, WISCONSIN	
EXHIBIT K SHEET 1 OF 1 PROJECT BOUNDARY HYDRO-PLANT PORT EDWARDS HYDRO-ELECTRIC PLANT	
DRWG. NO. DJ 2894	
NEKOOSA PAPERS, INC. PORT EDWARDS, WISCONSIN CADD/ENGINEERING DEPARTMENT	
SCALE	DATE
DRAWN BY	APPROVED
TRACED BY	
CHECKED BY	D-
NO. LOCATION	DATE
REVISION	CHANGE NO.
SHEET OF	

20070926-0136-003

FIGURE 4
2007 PURPLE LOOSESTRIPE SURVEY

AUTOCAD RELEASE 10.0

DATE	REVISION	BY	DATE	REVISION	BY
03-06-86	REVISED	D.M.D.	09-13-88	REDRAWN	J.A.B.
12-10-85	REVISED	R.S.	04-20-87	REVISED	J.A.B.
01-30-57	INITIAL ISSUE	---	07-10-86	REDRAWN	J.A.B.



BM-L-85-1
RAILROAD SPIKE IN N. SIDE OF
36" MAPLE TREE, 50' NORTH OF
NE CORNER OF POWER PLANT BLDG.
ELEV. 986.243

BM-L-85-1A
2" BRASS DISC ON WEST WINGWALL
AT SOUTH SIDE OF BRIDGE TO
HYDRO-PLANT
ELEV. 988.914

20 PARCEL NO.
2" x 28" STEEL SHAFT ON RANDOM TRAVERSE
○ IRON PIPE
□ CONCRETE MONUMENT

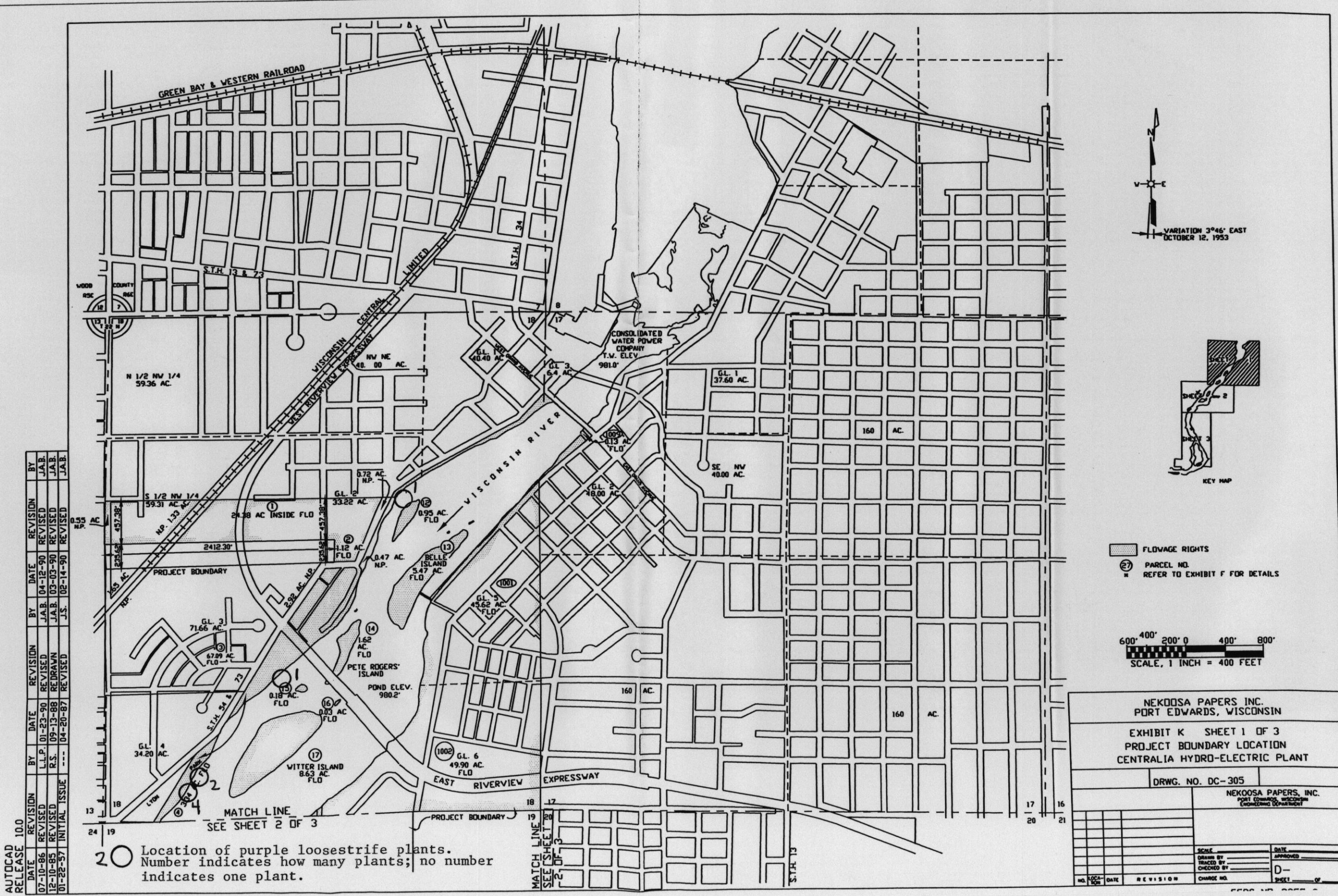
600' 400' 200' 0 400' 800'
SCALE, 1 INCH = 400 FEET

○ Location of purple loosestrife plants
Number indicates how many plants.
No number indicates one plant.

NEKOOSA PAPERS INC. PORT EDWARDS, WISCONSIN	
EXHIBIT K SHEET 2 OF 3 PROJECT BOUNDARY LOCATION CENTRALIA HYDRO-ELECTRIC PLANT	
DRWG. NO. DC-306	
NEKOOSA PAPERS, INC. PORT EDWARDS, WISCONSIN ENGINEERING DEPARTMENT	
SCALE	DATE
DRAWN BY	APPROVED
TRACED BY	
CHECKED BY	D-
NO. LOCAL	SHEET OF

20070926-036-004

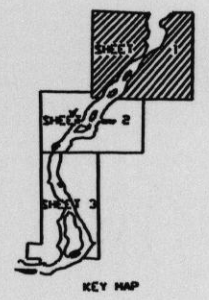
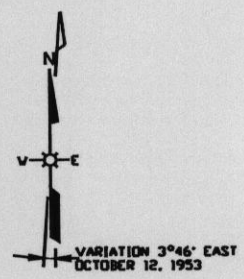
FIGURE 5
2007 PURPLE LOOSESTRIPE SURVEY



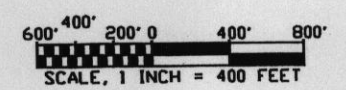
AUTOCAD RELEASE 10.0

DATE	REVISION	BY	DATE	REVISION	BY
07-10-86	REVISED	L.L.P.	01-23-90	REVISED	J.A.B.
12-10-85	REVISED	R.S.	09-13-88	REDRAWN	J.A.B.
01-22-87	INITIAL ISSUE	---	04-20-87	REVISED	J.S.
					J.A.B.

20 Location of purple loosestrife plants. Number indicates how many plants; no number indicates one plant.



- FLOWAGE RIGHTS
- PARCEL NO. REFER TO EXHIBIT F FOR DETAILS



NEKOOSA PAPERS INC.
PORT EDWARDS, WISCONSIN

EXHIBIT K SHEET 1 OF 3
PROJECT BOUNDARY LOCATION
CENTRALIA HYDRO-ELECTRIC PLANT

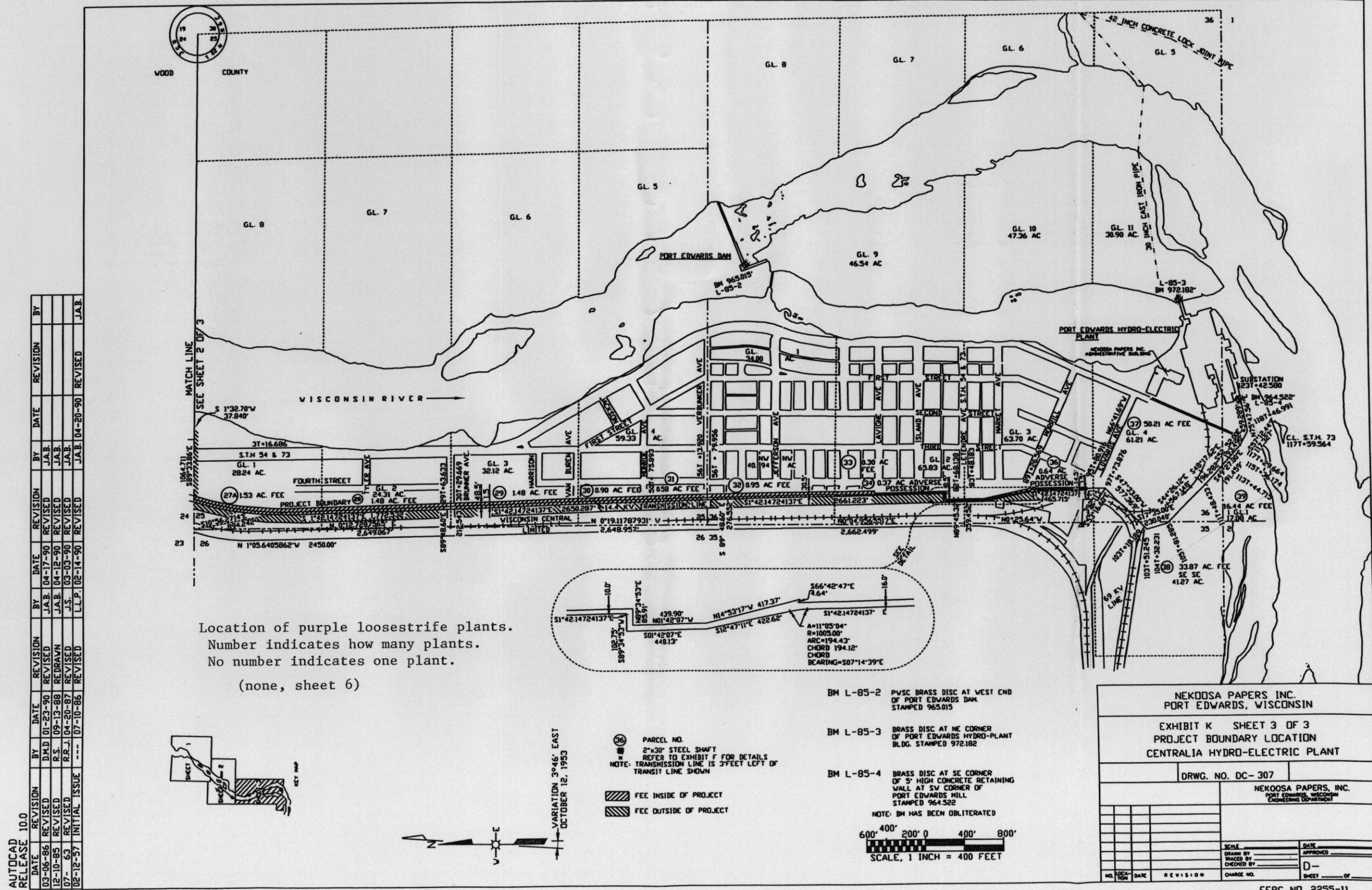
DRWG. NO. DC-305

NEKOOSA PAPERS, INC.
PORT EDWARDS, WISCONSIN
ENGINEERING DEPARTMENT

NO.	DATE	REVISION	CHARGE NO.	SCALE	DATE

20070926-0136-005

FIGURE 6
2007 PURPLE LOOSESTRIPE SURVEY



Location of purple loosestrife plants.
Number indicates how many plants.
No number indicates one plant.
(none, sheet 6)

DATE	REVISION	BY	DATE	REVISION	BY
03-06-86	REVISED	D.M.D.	01-23-90	REVISED	J.A.B.
12-10-85	REVISED	R.S.	09-13-88	REDRAWN	J.A.B.
07-1-83	REVISED	R.R.J.	04-20-87	REVISED	J.A.B.
02-12-57	INITIAL ISSUE	---	07-10-86	REVISED	J.A.B.

20070926.0B6.006