

Ten - October 80's  
 Partly Sunny  
 10:30 AM

Lake Name <i>Thunder</i>	County <i>Oreida</i>	WBIC <i>1118102</i>	Date(s) <i>8/25/14</i>	Start time (~ 15 min) <i>10:30</i>	End time (~ 15 min) <i>11:00 PM</i>	Total collector time (hrs x # collectors) <i>7 hrs. paid / 3.5 volunteer</i>
Data collectors <i>Ryan M. Peterson</i>	<i>Darrell</i>	Lead Monitor phone and email <i>Ryan.200-6316 Ryan.M.Peterson@oreida.gov</i>	Start time (~ 15 min) <i>10:30</i>	End time (~ 15 min) <i>11:00 PM</i>	Conductivity (ZM tow if >= 99 umhos/cm) <i>60</i>	

Look for the following species: Purple loosestrife, Phragmites, flowering rush, Japanese knotweed, Yellow iris, Eurasian water-milfoil, curly-leaf pondweed, Hydrilla, Brazilian waterweed, yellow floating heart, European frog-bit, yellow floating heart, water chestnut, Brazilian waterweed, fanwort, parrot feather, water hyacinth, water lettuce, zebra mussel, quagga mussel, water flea, Chinese mystery snail, banded mystery snail, faucet snail, New Zealand mud snail, Asian clam, red swarf p crayfish, rusty crayfish, didymo, and any other AIS found.

STEP 1: Record locations of sampling sites (in decimal degrees). Sampling sites include all public boat landings (BL), 5 target sites (TS) and the meander survey sites (MS). List AIS found at each site or record none. Collect a sample of any new AIS found. Collect five new invasive plant specimens, 20 Dreissenids, and 3 of each snail species and include internal and external labels with WBIC, lake name, county, sample date, sample type (snails, spiny water flea or zebra mussel) and collector. Legibility is appreciated. If needed, preserve with adequate ethanol.

Site	Latitude	Longitude	Snorkel (Y or N*)	If N snorkel, indicate why†	Species, density 1-5‡
<i>BL1</i>	<i>45.77280</i>	<i>-89.82020</i>	<i>N</i>	<i>Tannic water</i>	<i>BMS-1, CMS-1</i>
<i>TS1</i>	<i>45.77491</i>	<i>-89.22459</i>	<i>N</i>	<i>Tannic water</i>	<i>BMS-1, CMS-1</i>
<i>TS2</i>	<i>45.78239</i>	<i>-89.23306</i>	<i>N</i>	<i>N</i>	<i>100 AIS</i>
<i>BL2</i>	<i>45.80344</i>	<i>-89.21169</i>	<i>N</i>	<i>N</i>	<i>BMS-1, EBM-1</i>
<i>TS3</i>	<i>45.80359</i>	<i>-89.21000</i>	<i>N</i>	<i>N</i>	<i>100 AIS</i>
<i>TS4</i>	<i>45.78393</i>	<i>-89.20787</i>	<i>N</i>	<i>N</i>	<i>BMS-1</i>
<i>TS5</i>	<i>45.79259</i>	<i>-89.21540</i>	<i>N</i>	<i>N</i>	<i>BMS-1</i>

**\*For lakes/sites not snorkeled, substitute:**

Boat landing site - 15 rake throws and 15 D-net samples OR 30 minutes, whichever comes first  
 Targeted site - 5 rake throws and 5 D-net samples OR 10 minutes, whichever comes first  
 50 meander sites - 10 rake throws and 10 D-net samples during meander survey between sampling sites for a total of 50 meander survey sites

† If lake/site was not snorkeled, indicate why: **stained water, turbid water, blue-green bloom, chemical treatment, other (please describe).**

**† Density Ratings**

- 1 - A few plants or invertebrates
- 2 - One or a few plant beds or colonies of invertebrates
- 3 - Many small beds or scattered plants or colonies of invertebrates
- 4 - Dense plant, snail or mussel growth in a whole bay or portion of the lake
- 5 - Dense plant, snail or mussel growth covering most shallow areas

**Step 2:** Collect Waterflea Tows from the deep hole (DH). Decant s water and preserve the sample. Submit sample and datasheet to Science Services.

Site	Net ring depth	Method (Hor, Obliq, vert)	Net diameter (30 or 50 cm)	Ethanol added (Y or N)	Samples combined (Y or N)	Sample sent to, date
1	3m	↓	↓	↓	↓	↓
1		↓	↓	↓	↓	↓
1		↓	↓	↓	↓	↓

**Step 3:** Collect Veiliger Tows from 3 sites; the deep hole (DH), water depth of about 4 meters (if possible). Submit sample and Mussel Veiliger Tow Monitoring Report form to Science Service.

Site	Net ring depth	Net diameter (30-or-50 cm)	Ethanol added (Y or N)	Samples combined (Y or N)	Sample sent to, date

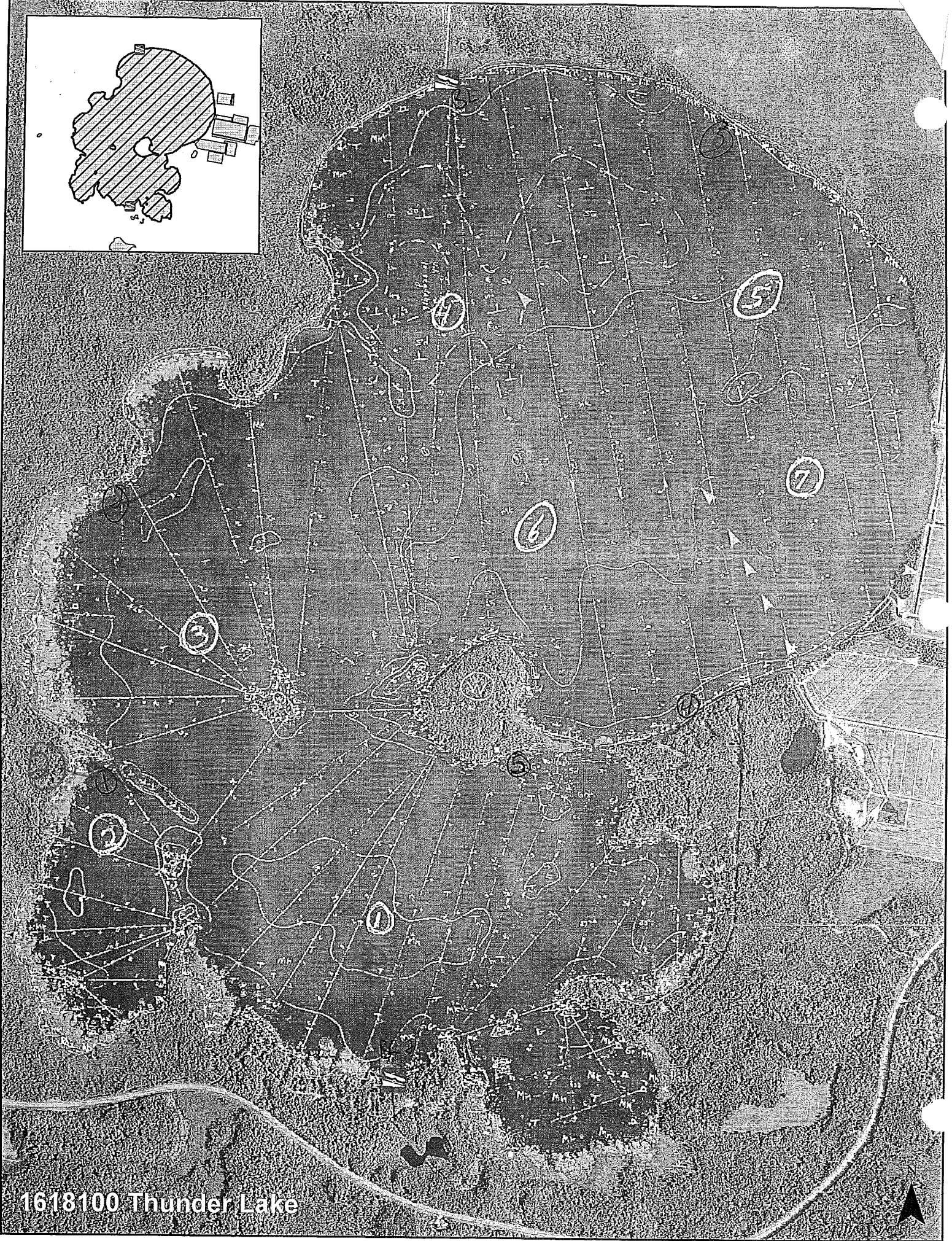
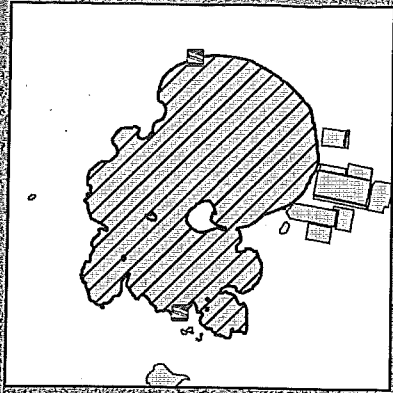
**Step 4:** Were plant voucher specimens submitted? Yes No (circle) If yes, where? (circle) Freckmann Herbarium, Other \_\_\_\_\_

**Step 5:** Were snail voucher specimens submitted (separate into Chinese, banded, all others)? Yes No (circle) If yes, where? (circle) UW La Crosse, or Other \_\_\_\_\_

**Step 6:** Data was entered into SWIMS on 8/29/14 by JASON COOPER

**Step 7:** Data was proofed on 8/29/14 by Ryan Motiff

**Notes:**



1618100 Thunder Lake

