

* For lakes/sites not snorkeled, substitute:

Boat landing site - 15 rake throws and 15 D-net samples OR 30 minutes, whichever comes first

Targeted site - 5 rake throws and 5 D-net samples OR 10 minutes, whichever comes first

50 meander sites - 10 rake throws and 10 D-net samples during meander survey between sampling sites for a total of 50 meander survey sites

† If lake/site was not snorkeled, indicate why: stained water, turbid water, blue-green bloom, chemical treatment, other (please describe).

‡ Density Ratings

1 – A few plants or invertebrates

2 – One or a few plant beds or colonies of invertebrates

3 – Many small beds or scattered plants or colonies of invertebrates

4 – Dense plant, snail or mussel growth in a whole bay or portion of the lake

5 – Dense plant, snail or mussel growth covering most shallow areas

Step 2: Collect Waterflea Tows from 3 sites: the deep hole (DH) and 2 other sites in water deeper than 15 feet (if possible). Submit sample and Water Flea To Monitoring Reprt form to Science Services.

Site	Depth sampled	Method (hor, obliq, vert)	Net diameter (30 or 50 cm)	Ethanol added (Y or N)	Samples combined (Y or N)	Sample sent to, date
1	3 ft	hor	50	Y	Y	Gina L. on 8/2/13
2	6 ft	hor	50	Y	Y	↓
3	5 ft	hor	50	Y	Y	↓

Step 3: Collect Veliger Tows from 3 sites; the deep hole (DH), outlet site (OS), and or downwind site (DS) in water depth of about 4 meters (if possible). Submit sample and Mussel Veliger Tow Monitoring Report form to Science Service.

Not suitable

Site	Depth sampled	Net diameter (30 or 50 cm)	Ethanol added (Y or N)	Samples combined (Y or N)	Sample sent to, date

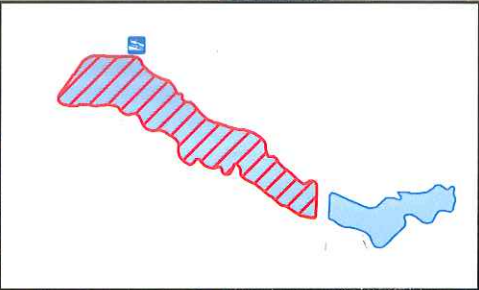
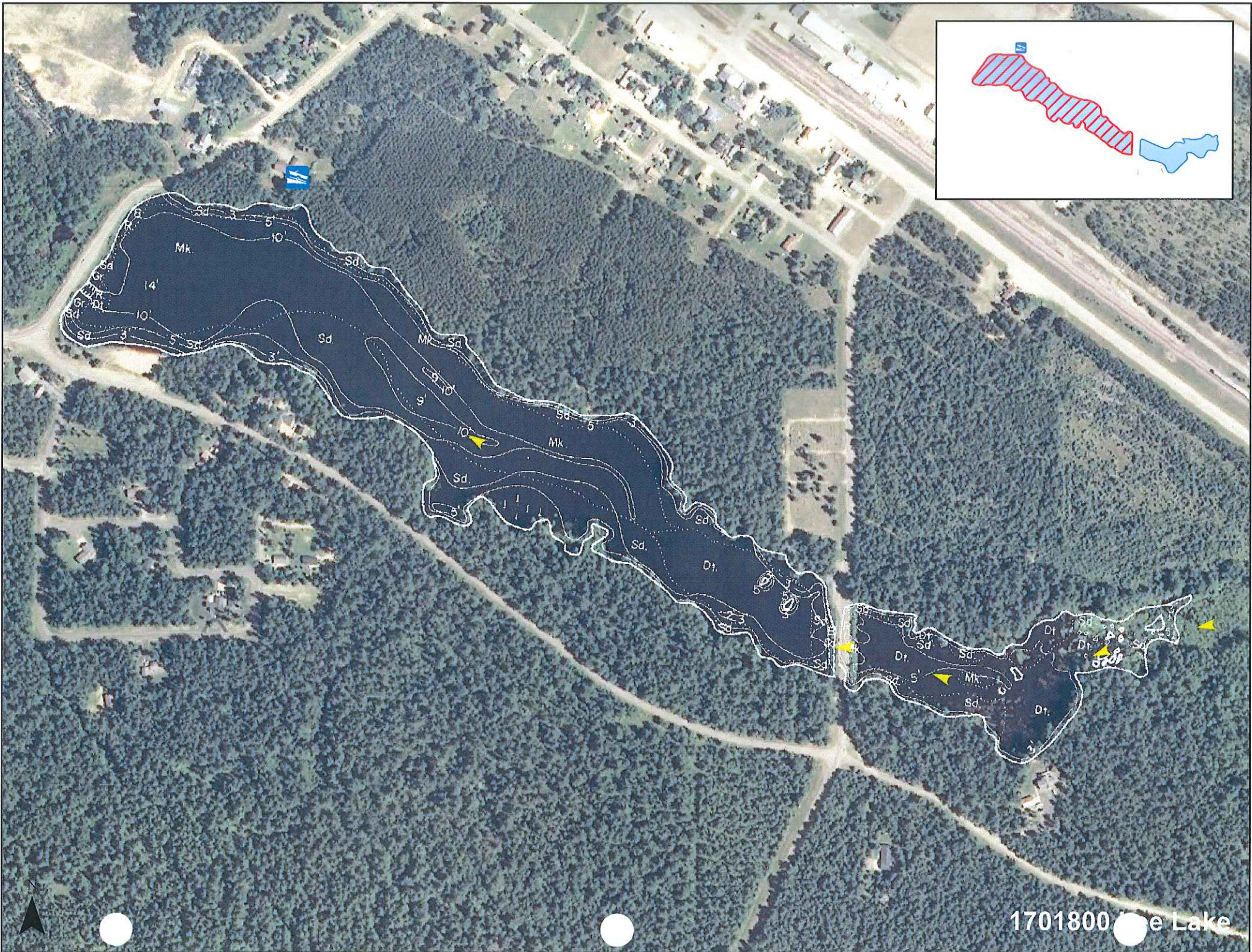
Step 4: Were plant voucher specimens submitted? Yes No (circle) If yes, where? (circle) Freckmann Herbarium, Other _____

Step 5: Were snail voucher specimens submitted (separate into Chinese, banded, all others)? Yes (circle) No (circle) If yes, where? (circle) UW La Crosse, or Other _____

Step 6: Data was entered into SWIMS on 7/2/13 by Erin Vennie-Vallvath

Step 7: Data was proofed on 9/23/13 by Erin Vennie-Vallvath

Notes:



1701800 e Lake