

Data Collectors: Scott Van Egerou & Erin Vennie - Vollrath
 Paddock Lake Kenosha County WBIC: 737900

Start Time: 12:00 End Time: 16:00 Secchi depth: 7 ft.

Date: 6/19/2012

Boat Landing #1	Species: FUM, CLP, ZM, CMS	Latitude: 42.57439	Longitude: -88.09205	Density: 3, 1 half shell, cracked shell
Search Site #1 developed Shoreline	ZM, EWM	42.57388	-88.10365	1, 4
# 2 private, small landing	CMS, CLP, EWM	42.57153	-88.1053	1, 2, 3
# 3 developed Shoreline	ZM, EWM	42.57085	-88.09768	1, 4
# 4 near plant harvestor	EWM, CLP	42.57765	-88.10224	4, 3
# 5 2 docks south of boat landing	EWM, CMS, ZM			3, 1, 2
Meander #1	Narrow leaf cattail	42.57643	-88.10251	2
Meander #2	Phragmites, CLP	.57318	.10554	1, 1
Meander #3	Narrow-leaf cattail	42.57190	88.10574	1

Step 3 Water Flea Tows

Method: Oblique Diameter: 50cm

Depth Tow 1: 14', Tow 2: 14', Tow 3: 14'

Denatured
E TOH added: /N Consolidated sample: /N

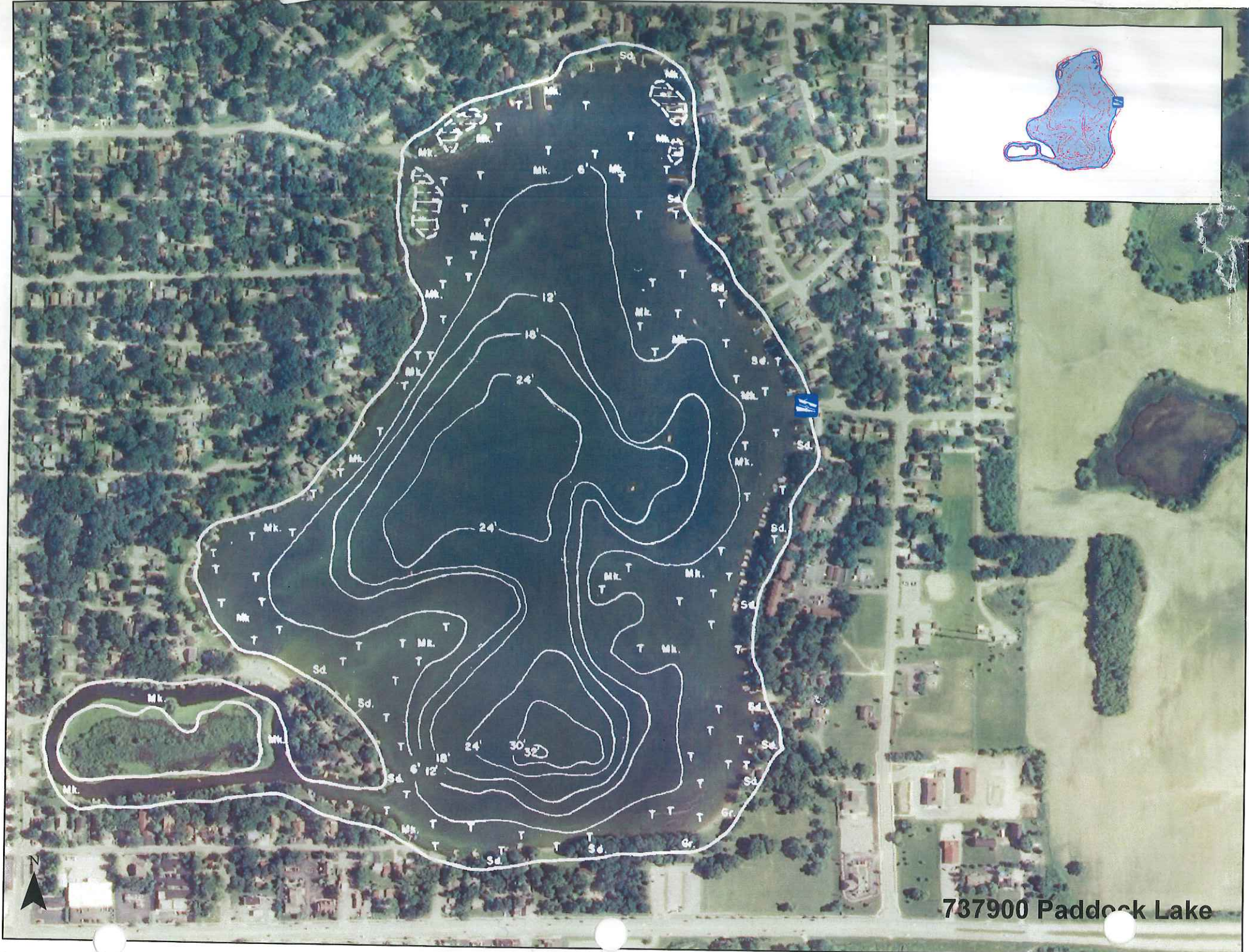
Step 4: Veliger Tows

Diameter of net: 50 cm

Notes:

lotus spp. found in the SW section of the channel loop.
Small, black spines on the stem. Took a picture.

Data submitted to SWIMS on 6/21/12 by Erin



737900 Paddock Lake