

just did Search Sites
and Boat Landings.

Look for the following species: Purple loosestrife, Phragmites, flowering rush, Hydrilla, Brazilian waterweed, Eurasian water-milfoil, curly-leaf pondweed, yellow floating heart, zebra mussel, quagga mussel, Chinese mystery snail, banded mystery snail, faucet snail, New Zealand mud snail, didymo, water flea, and any other AIS found.

[illegible]

* For lakes/sites not snorkeled, substitute:

Boat landing site - 15 rake throws and 15 D-net samples OR 30 minutes, whichever comes first

Targeted site - 5 rake throws and 5 D-net samples OR 10 minutes, whichever comes first

50 meander sites - 10 rake throws and 10 D-net samples during meander survey between sampling sites for a total of 50 meander survey sites

[†] If lake/site was not snorkeled, indicate why: stained water, turbid water, blue-green bloom, chemical treatment, other (please describe).

[‡] Density Ratings

- 1 - A few plants or invertebrates
- 2 - One or a few plant beds or colonies of invertebrates
- 3 - Many small beds or scattered plants or colonies of invertebrates
- 4 - Dense plant, snail or mussel growth in a whole bay or portion of the lake
- 5 - Dense plant, snail or mussel growth covering most shallow areas

Step 2: Collect Waterflea Tows from 3 sites: the deep hole (DH), outlet site (OS), and 2 other sites in water deeper than 15 feet (if possible). Submit sample and Water Flea To Monitoring Report form to Science Services.

Site	Depth sampled	Method (hor, obliq, vert)	Net diameter (30 or 50 cm)	Ethanol added (Y or N)	Samples combined (Y or N)	Sample sent to, date
1	3m	Y	Y	Y	Y	
11						
11						

Step 3: Collect Velliger Tows from 3 sites; the deep hole (DH), outlet site (OS), and or downwind site (DS) in water depth of about 4 meters (if possible). Submit sample and Mussel Velliger Tow Monitoring Report form to Science Service.

Site	Depth sampled	Net diameter (30 or 50 cm)	Ethanol added (Y or N)	Samples combined (Y or N)	Sample sent to, date
1	3m	Y	Y	Y	
11					
11					

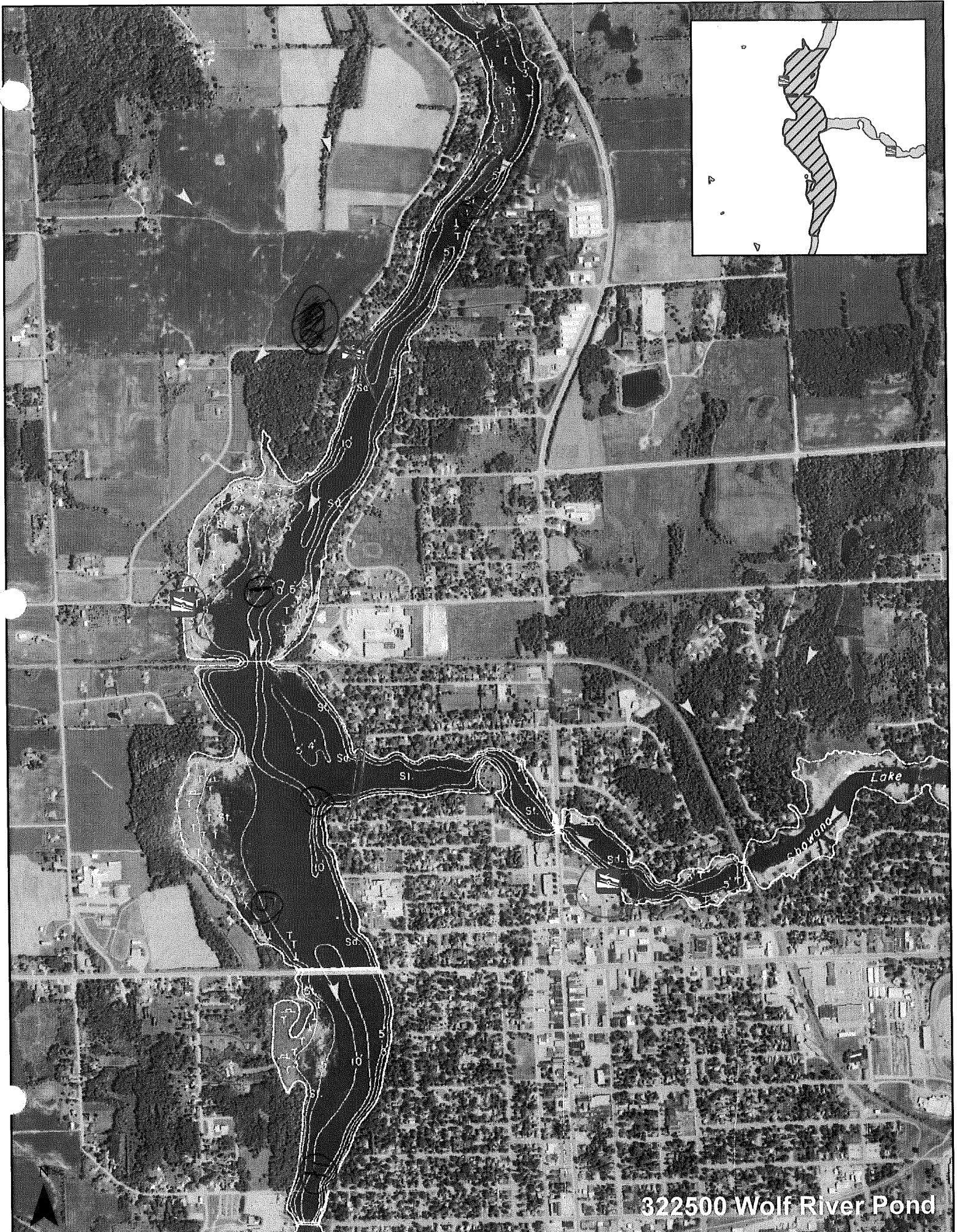
Step 4: Were plant voucher specimens submitted? Yes No (circle) If yes, where? (circle) Freckmann Herbarium, Other N/A

Step 5: Were snail voucher specimens submitted (separate into Chinese, banded, all others)? Yes No (circle) If yes, where? (circle) UW La Crosse, or Other _____

Step 6: Data was entered into SWIMS on 8/24/13 by Ryan Motiff

Step 7: Data was proofed on 9/16/13 by Janice Stetson

Notes:



32250 Wolf River Pond