

INF-2015-8-04493

Von Holdt, Crystal L - DNR

From: Von Holdt, Crystal L - DNR
Sent: Monday, November 16, 2015 9:43 AM
To: Brent Jalonen (Jalonen.Brent@co.calumet.wi.us); Anthony Reali (Reali.Anthony@co.calumet.wi.us)
Cc: Domer, Nicholas T MVP
Subject: Mullenbach follow up
Attachments: 20151116075902508.pdf

Hi Brent and Tony,

Thanks for meeting with me last Friday. I checked the maps for the Dale Mullenbach project and found that this is an artificial ditch cut (so no stream history) so any crossing of the ditch for agricultural purposes does not require a Ch 30 permit. The ditch is large enough that it would be considered navigable so Ch 30 (waterway) permits are needed if the use of a crossing changes to anything other than agriculture (even dual-use). Also, the area is mapped as emergent/wet meadow wetland (and I can confirm it's wetland based on the site visit). It's best to contact Nick Domer, Army Corps of Engineers Project Manager for wetland projects within Calumet County, to see if Dale's project can be designed to meet the "best management practices" to be ag-exempt from wetland permitting. If it's eligible at ACOE level for ag-exemption, then no wetland permit from DNR at the state.

Nick – I've attached the map information for the Mullenbach property and ditch location. It's at T17N R20E Section 6 SE of SW (south side of St Charles Rd and east of CTH G, Brothertown, Calumet Co).

Brent/Tony – we'll need to make sure this gets to Dale via email once he emails you with his email address.

If you have any questions, please let me know! Thanks!

We are committed to service excellence.

Visit our survey at <http://dnr.wi.gov/customersurvey> to evaluate how I did.

Crystal von Holdt
Water Management Specialist – Water Division
Wisconsin Department of Natural Resources
2984 Shawano Avenue, Green Bay WI 54313-6727
Phone: (920) 662-5466
Crystal.vonHoldt@wi.gov



dnr.wi.gov



Von Holdt, Crystal L - DNR

From: Brent Jalonen <Jalonen.Brent@co.calumet.wi.us>
Sent: Wednesday, November 11, 2015 2:47 PM
To: Von Holdt, Crystal L - DNR
Subject: Mullenbach's
Attachments: WGX.pdf

Crystal,
Here is a map of Mullenbach's site. It doesn't have an address but:

It's the east ½ of Gvt. Lot 234 in Brothertown.
G south out of Chilton to St. Charles Rd.

Basically it is just east of the corner of County Rd G and St. Charles rd.

Brent Jalonen
Erosion Control & Stormwater Specialist
Calumet County Land & Water Conservation Department
jalonen.brent@co.calumet.wi.us
920-849-1493 Ext. 395

MULTENBACH T17 R2056 SESW

(S. Br. Multi-Purc River watershed)

T. Brotherstown



Pr (indic soils) / Elk (w/w)

stream history

2014



2013



1:12,804



0.4 Miles

0.20

0

0.4

NAD_1983_HARN_Wisconsin_TM
© Latitude Geographics Group Ltd.

DISCLAIMER: The information shown on these maps has been obtained from various sources, and are of varying age, reliability and resolution. These maps are not intended to be used for navigation, nor are these maps an authoritative source of information about legal land ownership or public access. No warranty, expressed or implied, is made regarding accuracy, applicability for a particular use, completeness, or legality of the information depicted on this map. For more information, see the DNR Legal Notices web page: <http://dnr.wi.gov/org/legal/>



Legend

- Major Roads**
 - Interstates
 - US Highways
 - State Highways
- Rivers and Streams**
- Open Water**
- Airports**

Notes



2010



Legend

- Major Roads**
- Interstates
 - US Highways
 - State Highways
- Rivers and Streams**
- Open Water
 - Airports



1: 12,804

0.4 Miles

0.20

0

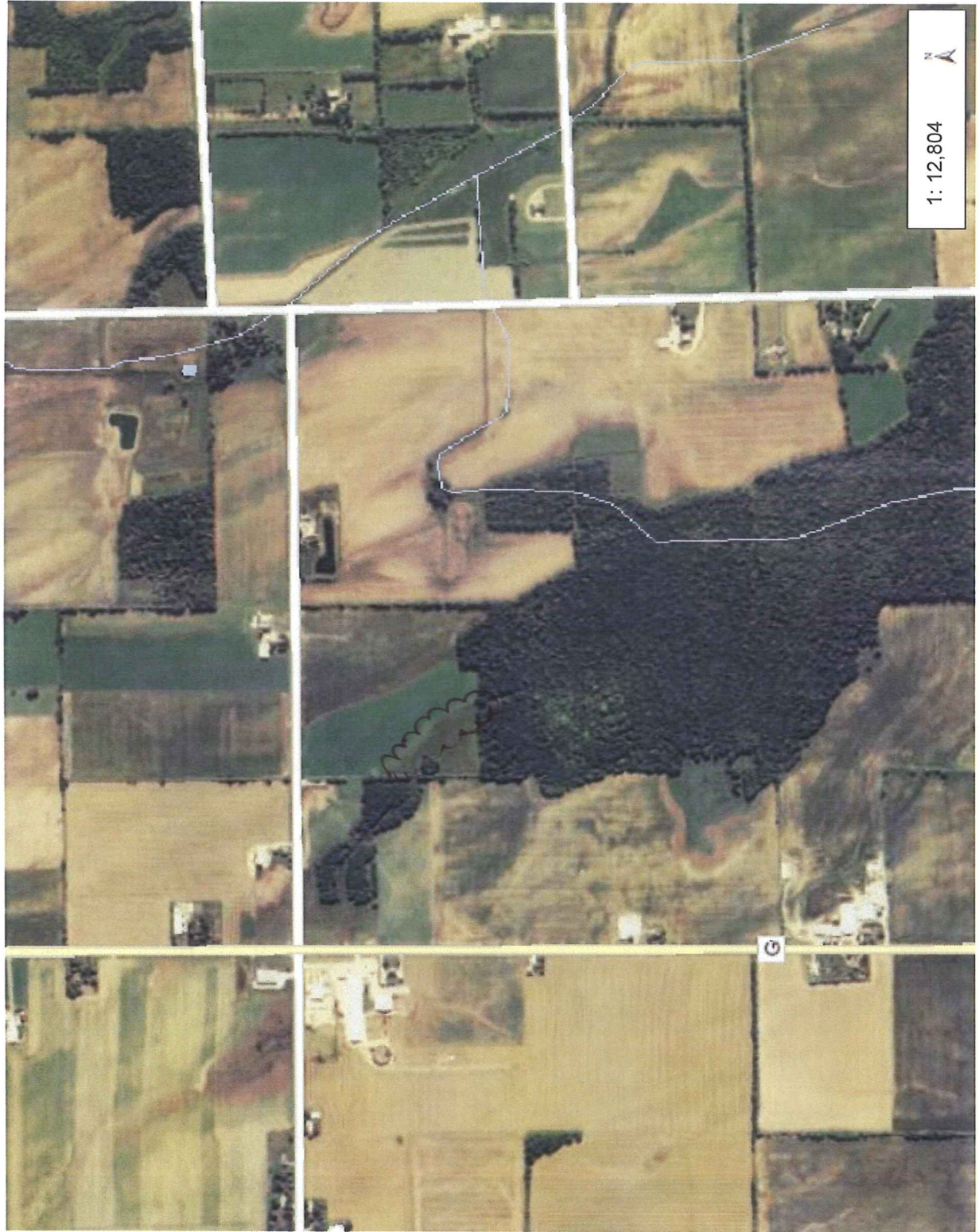
0.4

Notes

DISCLAIMER: The information shown on these maps has been obtained from various sources, and are of varying age, reliability, and resolution. These maps are not intended to be used for navigation, nor are these maps an authoritative source of information about legal land ownership or public access. No warranty, expressed or implied, is made regarding accuracy, applicability for a particular use, completeness, or legality of the information depicted on this map. For more information, see the DNR Legal Notices web page: <http://dnr.wi.gov/orlegal/>



2008



1: 12,804



Legend

Major Roads

- Interstates
- US Highways
- State Highways

Rivers and Streams

- Open Water
- Airports



Notes

DISCLAIMER: The information shown on these maps has been obtained from various sources, and are of varying age, reliability and resolution. These maps are not intended to be used for navigation, nor are these maps an authoritative source of information about legal land ownership or public access. No warranty, expressed or implied, is made regarding accuracy, applicability for a particular use, completeness, or legality of the information depicted on this map. For more information, see the DNR Legal Notices web page: <http://dnr.wi.gov/org/legal/>

0.4 Miles



0

0.20

0.4

NAD_1983_HARN_Wisconsin_TM
© Latitude Geographics Group Ltd.

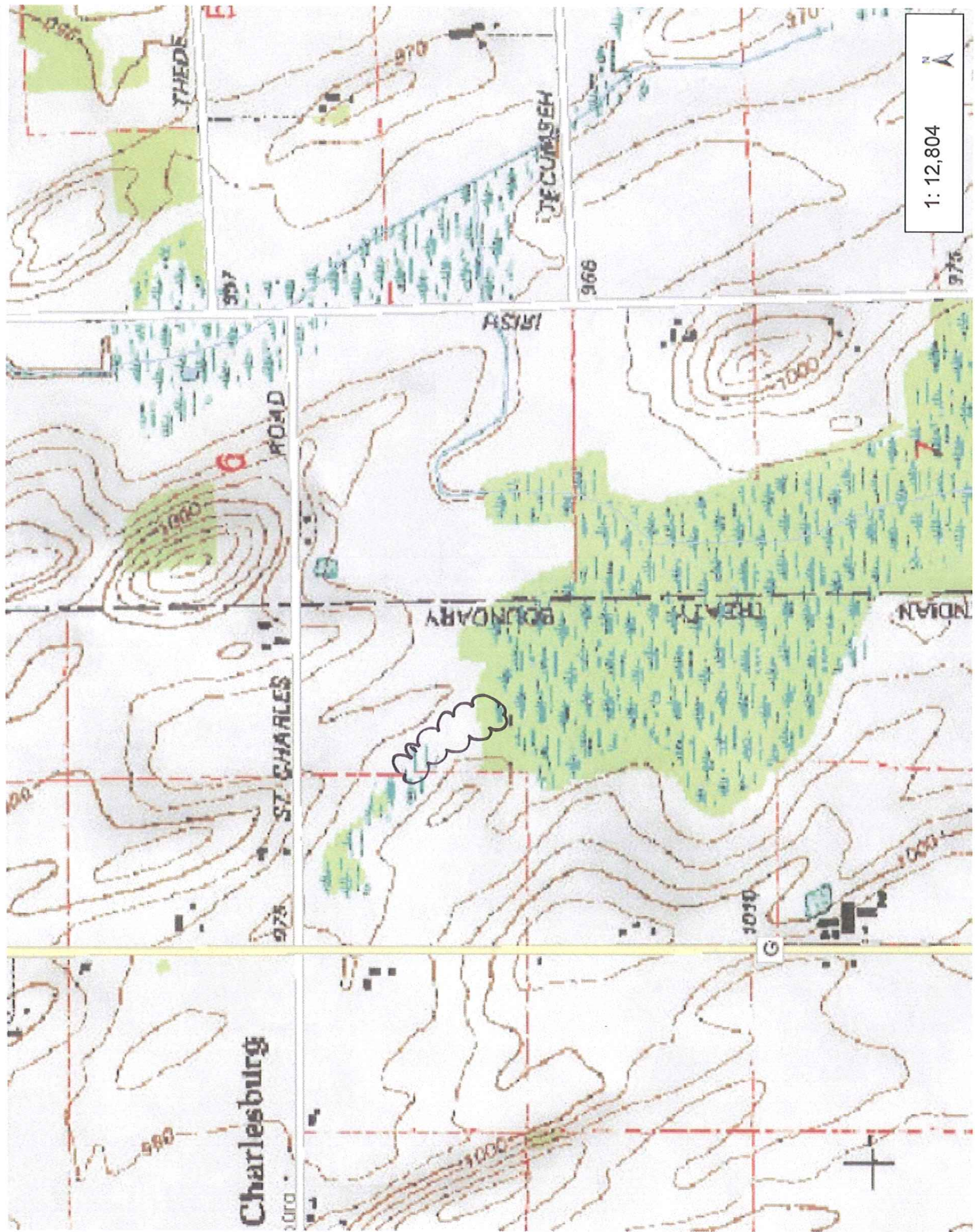


USGS



Legend

- Major Roads
- Interstates
- US Highways
- State Highways
- Rivers and Streams
- Open Water
- Airports



1: 12,804



DISCLAIMER: The information shown on these maps has been obtained from various sources, and are of varying age, reliability and resolution. These maps are not intended to be used for navigation, nor are these maps an authoritative source of information about legal land ownership or public access. No warranty, expressed or implied, is made regarding accuracy, applicability for a particular use, completeness, or legality of the information depicted on this map. For more information, see the DNR Legal Notices web page: <http://dnr.wi.gov/legal/>

Notes

1938 aerial

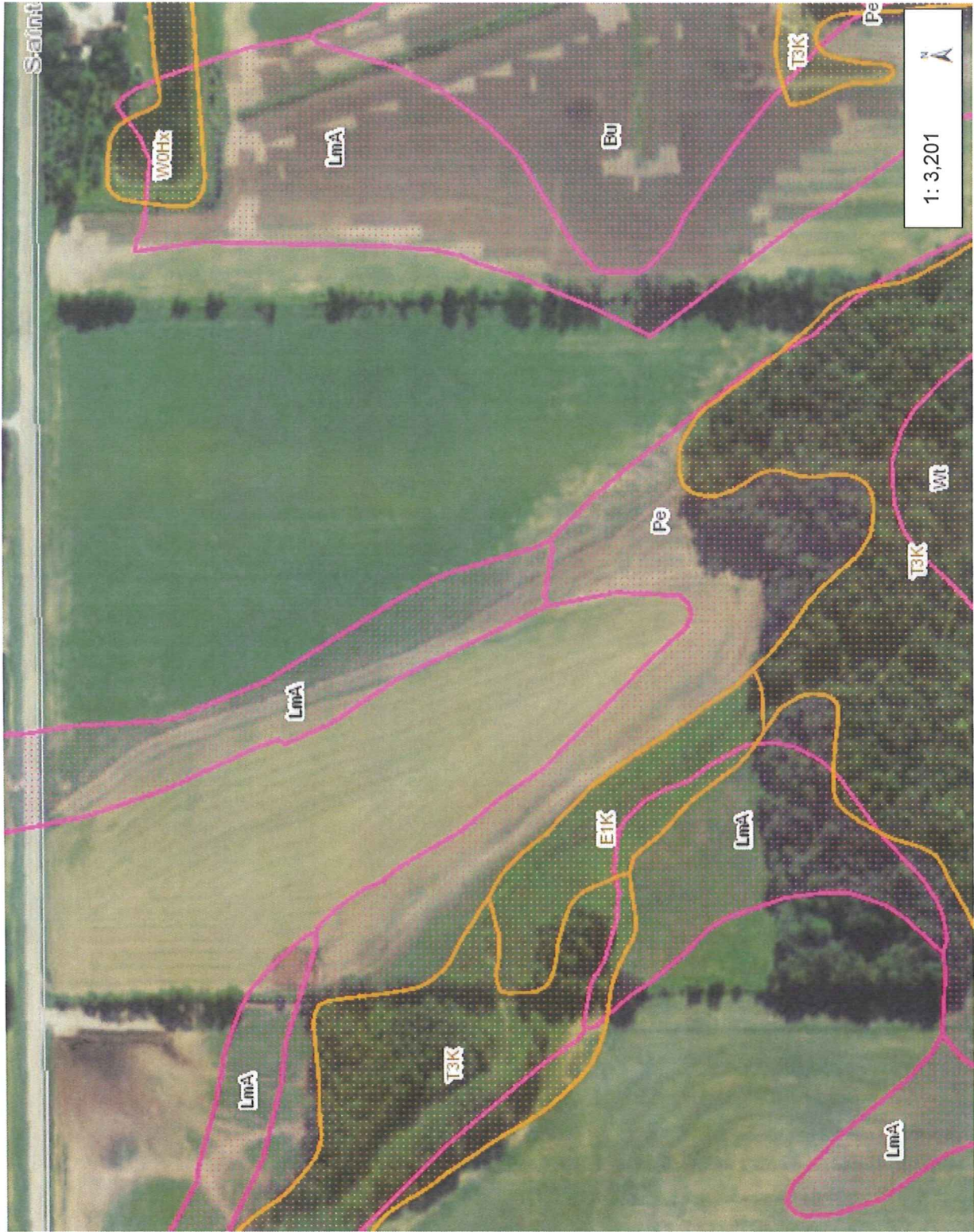


0 200 400 600ft

DISCLAIMER: This map is not guaranteed to be accurate, correct, current, or complete and conclusions drawn are the responsibility of the user.



Mullenbach - wetlands info



0.1

0 0.05 0.1 Miles

DISCLAIMER: The information shown on these maps has been obtained from various sources, and are of varying age, reliability and resolution. These maps are not intended to be used for navigation, nor are these maps an authoritative source of information about legal land ownership or public access. No warranty, expressed or implied, is made regarding accuracy, applicability for a particular use, completeness, or legality of the information depicted on this map. For more information, see the DNR Legal Notices web page: <http://dnr.wi.gov/org/legal/>

NAD_1983_HARN_Wisconsin_TM
© Latitude Geographics Group Ltd.



Legend

- Wetland Class Points**
 - Dammed pond
 - Excavated pond
 - Filled excavated pond
 - Filled/draind wetland
 - Wetland too small to delineate
- Filled Points**
- Wetland Class Areas**
 - Wetland
 - Upland
- Filled Areas**
- USDA Wetspots**
- Wetland Indicators**
- Major Roads**
 - Interstates
 - US Highways
 - State Highways
- Rivers and Streams**
 - Open Water
 - Airports

Notes