

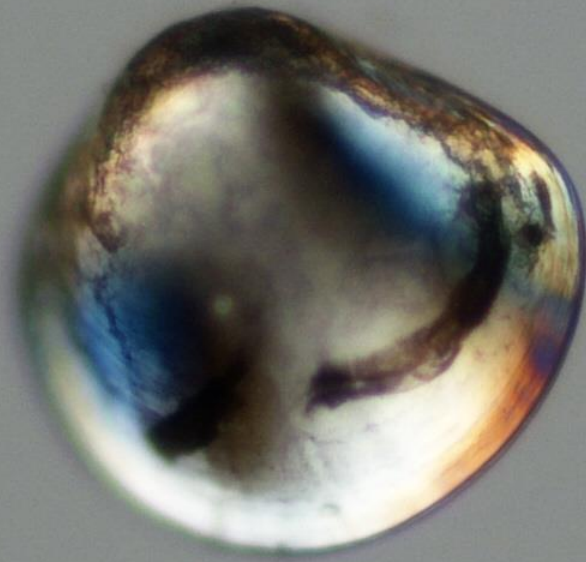
Zebra mussels confirmed in Lake Monona, Dane County (WBIC 804600) in October 2016.

A single veliger was found in a tow collected near Olin Park by Ted Bier, UW-Madison Center for Limnology, on 8/8/2015.

During the week ending 10/07/2016, multiple people and agencies reported adult mussels on piers and buoys. Peter Jopke of Dane County submitted voucher specimens for size and age:

Lake	WBIC	County	Station	Collector(s)	Date Sample was Collected	Verified as	Adult length (mm)	Age Estimate	Note
Monona	804600	Dane	near Tonyawatha Park	Pete Jopke	10/04/2016	zebra mussel	16		1Veliger in 2015, YOY, 1 year so reproducing population.
Monona	804600	Dane	near Tonyawatha Park	Pete Jopke	10/04/2016	zebra mussel	15		1Also reports of adults in multiple locations, further supporting reproducing population.
Monona	804600	Dane	near Tonyawatha Park	Pete Jopke	10/04/2016	zebra mussel	15	1	
Monona	804600	Dane	near Tonyawatha Park	Pete Jopke	10/04/2016	zebra mussel	14	1	
Monona	804600	Dane	near Tonyawatha Park	Pete Jopke	10/04/2016	zebra mussel	14	1	
Monona	804600	Dane	near Tonyawatha Park	Pete Jopke	10/04/2016	zebra mussel	14	1	
Monona	804600	Dane	near Tonyawatha Park	Pete Jopke	10/04/2016	zebra mussel	13	1	
Monona	804600	Dane	near Tonyawatha Park	Pete Jopke	10/04/2016	zebra mussel	13	1	
Monona	804600	Dane	near Tonyawatha Park	Pete Jopke	10/04/2016	zebra mussel	13	1	
Monona	804600	Dane	near Tonyawatha Park	Pete Jopke	10/04/2016	zebra mussel	12	1	
Monona	804600	Dane	near Tonyawatha Park	Pete Jopke	10/04/2016	zebra mussel	12	1	
Monona	804600	Dane	near Tonyawatha Park	Pete Jopke	10/04/2016	zebra mussel	12	1	
Monona	804600	Dane	near Tonyawatha Park	Pete Jopke	10/04/2016	zebra mussel	12	1	
Monona	804600	Dane	near Tonyawatha Park	Pete Jopke	10/04/2016	zebra mussel	12	1	
Monona	804600	Dane	near Tonyawatha Park	Pete Jopke	10/04/2016	zebra mussel	11	1	
Monona	804600	Dane	near Tonyawatha Park	Pete Jopke	10/04/2016	zebra mussel	11	1	
Monona	804600	Dane	near Tonyawatha Park	Pete Jopke	10/04/2016	zebra mussel	10	1	
Monona	804600	Dane	near Tonyawatha Park	Pete Jopke	10/04/2016	zebra mussel	10	1	
Monona	804600	Dane	near Tonyawatha Park	Pete Jopke	10/04/2016	zebra mussel	7	1	
Monona	804600	Dane	near Tonyawatha Park	Pete Jopke	10/04/2016	zebra mussel		1YOY	

Umbonate veliger in 2015 veliger tow sample.



Young-of-year mussel voucher submitted October 7, 2016.



Adult mussel vouchers submitted October 7, 2016.



Additional zebra mussel reports received from Lake Monona in October 2016:

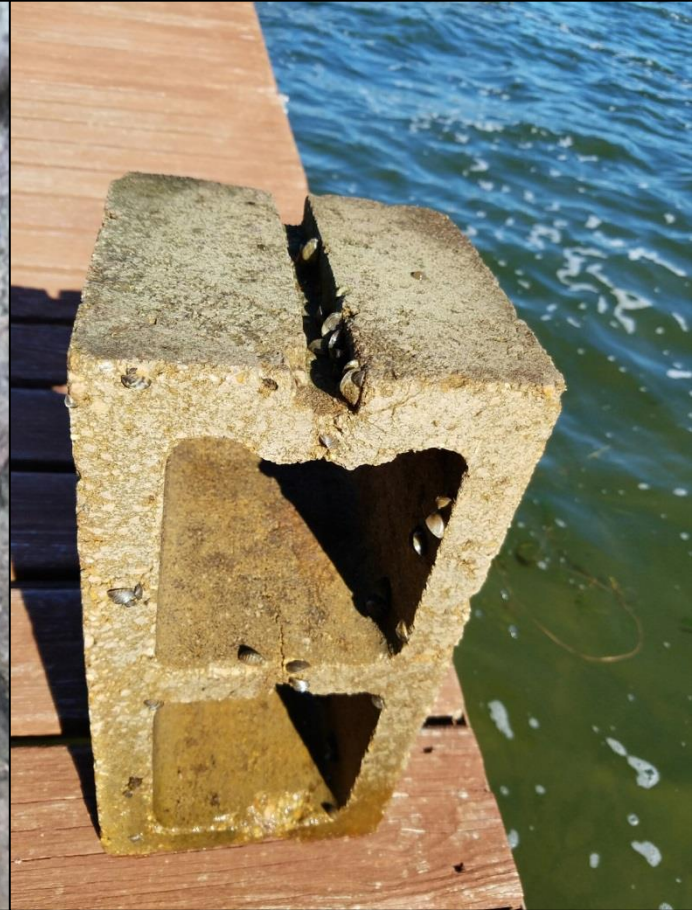
Lake Monona Sailing Club: large numbers of mussels on piers at about 21 shore stations.
Clean Lakes Alliance citizen monitors: 3 locations. Photos below by CLA monitors.



Near Tonyawatha Trail



Buoy anchor at Stonebridge Park



Squaw Bay near Waunona Way