



Cultivating Community and Stewardship from the Ledge to the Lakeshore

Implementing Friends of Hika Bay Action Plan



**Jim Kettler,
Executive Director**

Lakeshore Natural Resource Partnership
Wisconsin Department of Natural Resources
River Planning Grant RP-272-15

Implementing Friends of Hika Bay Action Plan
Final Report Document Outline: all are on CD

Financials

- Grant Payment Request (printed)
- Grant Payment Worksheet (printed)
- Local Government Force Account Report (printed)

Action Plan (all on disk)

- FOHB Presentation (printed)
- Hika Park Action Plan (printed)
- Hika Adopt-a-Park Program (printed)
- Volunteer Appreciation BBQ (printed)
- BBQ Attendees (printed)
- Hika Shores Volunteer Day (printed)
- Fischer Creek Conservation Area (printed)
- Fischer Creek Story (printed)
- Tree Planting Poster 2015 (printed)
- Tree Planting Poster 2016 (printed)
- Fischer Creek Progress Report (printed)
- Invasive Species Removal (printed)
- Restore the Shore Report (printed)
- LNRP and WaterGrass (printed)
- Hika Park Plant List (printed)
- Fischer Creek Plant List (printed)
- Lake Michigan Day (printed)
- Wonder of it All (printed)
- Putting Volunteers First (printed)
- Wetlands Matter (printed)

Outreach (all on disk)

- Cleveland Newsletter (on disk)
 - March 2015
 - May 2015
 - September 2015

- February / March 2016
 - May / June 2016
- LNRP Newsletter (on disk)
 - Spring 2015
 - Summer 2015
 - Fall 2015
 - Winter 2016
- Posters 2015 (on disk)
 - Centerville Creek Sampling Points
 - Centerville Creek Restoration Designs
 - Hika Shores

Photos (variety – all on disk)

Strategic Planning (all on disk)

- Steering Committee Meetings (on disk)
- Village Public Works, Village Board, Village Staff Meetings (on disk)
- Development Committee Meeting (on disk)
- Work Plan Summaries (printed)

Water Quality

- Stream Data (all on disk)
 - Stream Project Summer 2015
 - Southern Creek Comparisons 2010-2015
 - Centerville Creek 2010-2015
 - Fischer Point Creeks 2012-2015
 - Calvin Pine Creeks 2012-2015
- Water Summit (on disk)
- Posters on the Rotunda (on disk)
- Southern Creeks Summary (printed)
- Bio 191 Syllabus (on disk)
- Bio 191 Stream Assessment (on disk)
- Bio 294 Intern Syllabus (on disk)



Hika Park Cleveland, Wisconsin

5-Year Action Plan Update 2012-2017

January
2016



Friends of Hika Bay

Calvin, Pine, Point, Fischer & Centerville Watersheds

A
Proud
Program
of
the:



Lakeshore Natural Resource Partnership

P.O. Box 358

Cleveland WI 53015

Hika Park 5-Year Work Plan

January 2013 through December 2017

First Draft – December 2012

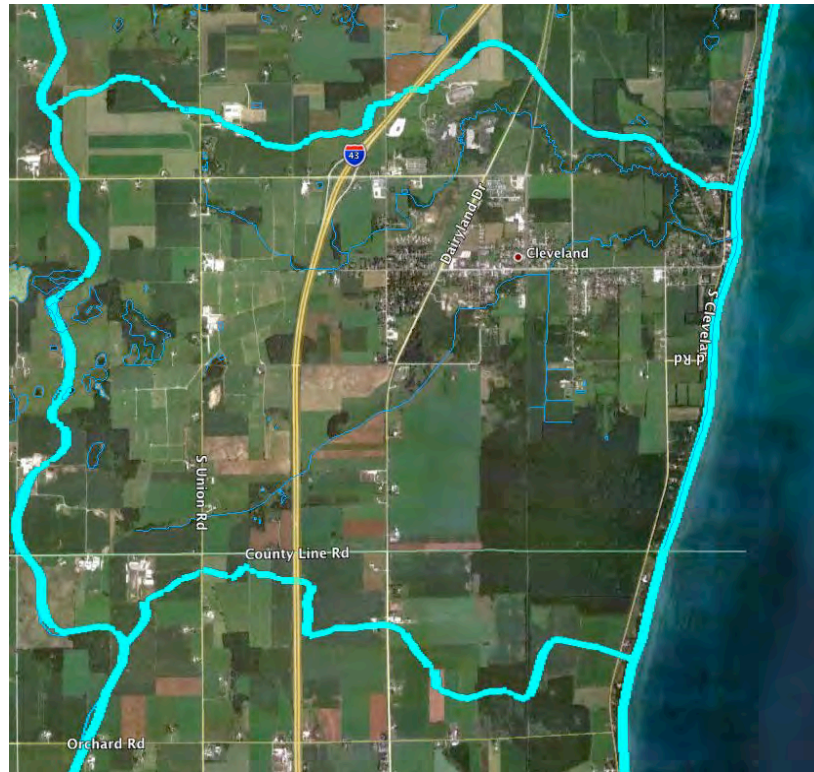
The 5-Year Hika Park Work Plan emerges from a successful restoration of an abandoned millpond on Centerville Creek that is adjacent to Hika Park. Reconstruction of the stream channel was completed in fall 2012 with only some native landscaping left to complete in 2013. The Village of Cleveland expanded Hika Park to include the restored stream channel and an adjacent ridge-swale community. The park increased in size from 2.21 acres to 13.85 acres. The Village is seeking enhancements to Hika Park that were partially developed from a partnership with the UW-Madison Landscape Architecture Program. The Open Space Planning and Design course used the park as their spring 2010 class project and developed 18 formal designs for the comprehensive restoration and enhancement of the park. From the Citizen Advisory Committee that was formed to advise on the reconstruction of Centerville Creek, the Friends of Hika Bay emerged in April 2011.

The Friends Group serves several community-based functions:

- An engaged citizen group acting as an advisory body.
- A conduit for information flow from local, state, and regional management agencies.
- A venue to raise awareness by bringing expertise (Water Quality, Invasive Species, Non-Point Runoff, Endangered Species) to the community via seminars.
- An organizing body for complementary habitat restoration projects and water quality monitoring.
- An energetic group of citizen volunteers who are passionate about and committed to improving land and water quality, and willing to organize to get the necessary *'boots on the ground'* to carry out the stewardship work.

The proposed 5-Year Work Plan will focus on implementing habitat enhancements of coastal wetlands, invasive species removal, habitat monitoring, and water quality monitoring. The Work Plan builds on extensive water quality monitoring that began with Centerville Cares water quality monitoring on Fischer and Point Creeks, starting in 2005, as well as three years of water quality monitoring on Centerville Creek. In 2013-17, our plan is to monitor 10 sites on Centerville Creek with interns from UW-Manitowoc. We also have a volunteer avian specialist that will conduct weekly bird surveys on Centerville Creek corridor and the Fischer Creek Conservation Area. These surveys will be part of a regional database being compiled by the Woodland Dunes Nature Center, Two Rivers, as part of a U.S. Fish and Wildlife Service-funded examination of the Lake Michigan corridor. The Work Plan includes finishing the restoration work on Centerville Creek and Hika Shores, two separate parcels of what is now the newly delineated Hika Park. The Friends of Hika Bay have committed to assisting with the native landscaping and removal of invasive species as well as become the long-term steward of the park.

Maps: Centerville Creek Watershed and Hika Park Project Area



Centerville Creek – Hika Park Restoration Project

Partnership In Action

- Lakeshore Natural Resource Partnership
- Village of Cleveland
- Friends of Hika Bay
- UW-Madison
- UW-Manitowoc
- Lakeshore Technical College

Timeline: 2009 to 2015

Outcomes: Restored Centerville Creek and Expanded & Enhanced Hika Park

Notable Recognition: Wisconsin Idea Award

LAKESHORE NATURAL RESOURCE PARTNERSHIP RECEIVES 2012 'WISCONSIN IDEA' AWARD

Lakeshore Natural Resource Partnership (LNRP), a regional non-profit organization, is the recipient of the 2012 Wisconsin Idea Award from the University of Wisconsin Colleges and UW-Extension. UW Colleges and UW-Extension Chancellor Ray Cross presented the award at the institutions' Chancellor's Awards Reception, September 20, in Madison. The annual Chancellor's Awards recognize UW Colleges and UW Extension partners, supporters and employees for their outstanding contributions to the quality of life in Wisconsin.

In giving the award, Cross praised Lakeshore Natural Resource Partnership and Friends of Hika Bay for bringing together the community and the university in the common goal of improving and protecting the water quality in northeastern Wisconsin.

LNRP and its partnering citizen's group, the Friends of Hika Bay, were nominated by UW-Manitowoc Campus Executive Officer and Dean, Dr. Charles Clark, for their "ongoing partnership and collaboration with university campuses and governmental agencies to provide students with a life-enhancing opportunity to get boots-on-the-ground, in-the-field experience in the biological sciences."

"The Wisconsin Idea emphasizes collaboration and extending the expertise of the University of Wisconsin beyond campus borders," Dr. Clark said. "This unique partnership among LNRP, Friends of Hika Bay, and UW campuses provides a model to improve our local habitat and society. The Award is a testament to the vision and energy of LNRP Executive Director Dr. Jim Kettler, Friends of Hika Bay Water Quality Chair Russ Tooley, and Village of Cleveland President Cindy Huhn to engage our biological science faculty and students with field trips and internships in water quality sampling and monitoring, bird tracking, and projects related to remediation of Centerville Creek, Hika Bay and Fischer Creek.

"Dr. Kettler and Russ Tooley have worked closely with UW-Manitowoc's Dr. Rebecca Abler and Dr. Richard Hein, professors of biological sciences, who wrote letters of support," Dr. Clark added.

Additionally, LNRP engaged previously during two semesters with UW-Madison Landscape Architecture students to re-design Hika Bay Park. Horticulture Department students at Lakeshore Technical College, Cleveland Campus, are involved in selecting, replanting and monitoring invasive plant species at Hika Bay as well.

LNRP's Jim Kettler said, "We are deeply honored to be receiving such special recognition with this Award. It really goes to all the people who've been involved with us these last few years – residents, academia, Village trustees, and the students themselves." The Wisconsin Idea Award honors individuals or organizations outside the UW (System) that have made significant contributions to society; the economy; the environment or the quality of life at the local, state, national or international level through involvement with the UW Colleges or UW Extension.



Photo by Jim Gill/Wisconsin Public Television

The Lakeshore Natural Resource Partnership (LNRP) and the Friends of Hika Bay (FHB) are recipients of the University of Wisconsin Colleges and University of Wisconsin-Extension 2012 Chancellor's Wisconsin Idea Award for bringing together the community and the university in the common goal of improving and protecting water quality in northeastern Wisconsin. Chancellor Ray Cross (back row, right) congratulated some of those involved in the restoration of Centerville Creek at the Chancellor's Award Event Sept. 20, 2012, in Madison. Front row: Rebecca Abler, UW-Manitowoc associate professor of biological sciences; Jim Kettler, executive director of LNRP; Russ Tooley, water quality chair of FHB; Cindy Huhn, president of the Village of Cleveland. Back row: UW-Manitowoc CEO/Dean Charles E. Clark; Ethan Poling, UW-Manitowoc student; Chancellor Ray Cross



Centerville Creek / Hika Park Restoration Project

Total Project Cost: \$545,621.58

Phase I: Design Phase from 2009-2011 with a budget of \$61,741.01

- Citizen Advisory Committee
- UW Madison Landscape Architecture Designs
- Public Meetings: 2 at the Village Hall, 2 at LTC, one house party for fundraising
- Land Survey
- Engineering Designs and Permits
- Water Quality Sampling and Avian Monitoring

Phase II: Centerville Creek Restoration Project from 2011-2012 with a budget of \$317,830.01

- Bidding Process
- Invasive Species Removal
- Construction Phase
- Restoration Planting
- Water Quality Sampling and Avian Monitoring

Phase III: Administrative – Hika Park as a Community Resource from 2012-2013 with a budget of \$13,950.00

- Village Board Approval of New Boundaries Increasing Park Size from 2.2 acres to 13.9 acres
- Formation of the Friends of Hika Bay
- Community Outreach on Volunteer Opportunities
- Adopt-a-Park Program
- Water Quality Sampling and Avian Monitoring

Phase IV: Hika Shores Project from 2012-2015 with a budget of \$32,100.56

- Invasive Species Trainings (2)
- Beach Clean Up and Invasive Species Removal
- Forest Remnant Invasive Species Removal
- Berm Invasive Species Removal and Restoration Plantings
- Wet Meadow Invasive Species Removal and Restoration Plantings
- Water Quality Sampling and Avian Monitoring

Phase V: Pedestrian Bridge, Gazebo, and Interpretive Trails from 2014-2015 with a budget of \$126,500.00

- Engineering Designs and Permits
- Bids
- Construction
- Water Quality Sampling and Avian Monitoring

Friends of Hika Bay Work Plan

Hika Park Designs
Chair: John Kirsch
Partner: UW Madison
Sponsor: Coastal
Mgmt

Invasive Species/
Native Planting
Chair: Ron Schaper
Partner: Lakeshore
Technical College
Sponsor: Urban
Forestry Grants

Centerville Creek
Restoration
Chair: Jim Kettler
Partner: InterFluve
Sponsor: Fish &
Wildlife Foundation,
Cleveland State Bank

Outreach
Chairs: Jenn
Hansmann
Partner: LNRP
Sponsor: LNRP
Stewardship Fund

Water Quality and
Habitat Monitoring
Chair: Russ Tooley
Partner: UW
Manitowoc
Sponsor: DNR River
Planning Grants

Friends of Hika Work Plan – November 2011

	Work Details	Funding Scenario	Lead Individual	Time Frame
Native Plantings	Follow up to Centerville Creek Restoration	Fish and Wildlife Foundation but need more	Jim	Spring 2012 Construction
	Enhance Hika Park	Coastal Mgmt	John, Ron	
	Habitat Enhancements on other watersheds	None to date	Dale (Kingfisher Farm)	
Park Design	Bridge & Boardwalk	Coastal Mgmt	John	Summer 2012
	Buildings	Village of Cleveland	Steve	Review in 2012
	Interpretive and Sponsor Recognition	Hika Bay Working Fund		Summer 2012
Invasive Species	Centerville Creek Project	Fish and Wildlife Foundation	Interfluve	2012
	Hika Sands	Coastal Mgmt	John, Ron, Dale	Fall 2011 and On-going
	Other watersheds	DNR Grant	John, Ron, Dale	Winter Spring 2012
Cultural and Recreational Opportunities	Lake Michigan Water Trail	None to date		On-going
	Circle Tour	None to date		On-going
	Ice Age Trail	None to date		On-going
	Hika Trails	Coastal Mgmt	John	Winter Spring 2012
Water Quality Monitoring	Centerville Creek	DNR Grant, Winn Funds	Russ	On-going
	Fischer, Point	Tooley Funds	Russ	On-going
	Pine, Calvin	Winn Funds	Russ	
Watershed Planning	All	None to date		On-going



Friends of Hika Bay

Calvin, Pine, Point, Fischer & Centerville Watersheds

2013 Work Plan

Supported by grants, private donations,
corporate sponsorships, and membership

Hika Park
Chair: John Kirsch
Partner: UW Madison, Lakeshore Technical College

Invasive Species
Chair: Ron Schaper
Partner: AIS Coordinator

Agricultural Partners
Chair: Karl Klessig
Partners: Partnering for Progress

Centerville Creek Restoration
Chair: Jim Kettler
Partner: Village of Cleveland

Habitat Monitoring
Chair: Bob Domagalski
Partner: EBird

Outreach
Chair: Jenn Hansmann
Partner: LNRP

Water Quality Monitoring
Chair: Russ Tooley
Partner: UW Manitowoc

Friends of Hika Bay - Work Plan 2013

I. Hika Park

Village Plan Commission: February 6, 2013

- Approved using the following nomenclature for the three sections of Hika Park: Boat Landing, Hika Shores, Centerville Creek Corridor
- Approved overall approach to Hika Shores design for ridge swale construction and native landscaping.
- Approved overall approach to Centerville Creek corridor native landscaping and tree planting.
- Approved plans for a viewing deck off of Franklin Drive that links to a small creek side trail to the Booda Deck. That deck will be reinforced with bench construction. The current boardwalk will be dismantled salvaging lumber and using it to reinforce the Booda Deck.

Contractor Meeting: February 12, 2013 - Bugsy Holsbach, Jason Sohn, Steve Simons, Jim Kettler

- Review plans for Tree Planting
 - Tree Selection
 - Sourcing and Pricing
 - Management Plan
- Review plans for Ridge Swale construction
 - Timing
 - Surplus for Coop Remediation Project
 - Ridge Swale Design Mixing InterFluve Engineering Design and Natural Sculpting
- Review Finances
 - Existing Contract on Centerville Creek - Holsbach
 - Addendum for Hika Shores - Holsbach
 - DNR Urban Forestry Grant – New Grant

DNR Meeting: February 21, 2013 - Tracy Salisbury, Stacy Grunwald, Jim Kettler

- Review Contract Documents
- Review Necessary Documentation
- Explore and Approve Match Opportunities

Additional Meetings and Tasks

Volunteer Tree Planting

- UW Manitowoc Environmental Club
- Friends of the Manitowoc River Watershed

- LTC Hort Club
- Cleveland Elementary and Montessori
- Village Newsletter
- Fish and Game
- Friends of Hika Bay

Fundraising

- Cleveland Fish and Game: Pledge once Coastal Mgmt Decision
- Cleveland State Bank: Pledge once Coastal Mgmt Decision
- Local Businesses: Pledge once Coastal Mgmt Decision
- Kohler Preservation Foundation: Pledge once Coastal Mgmt Decision
- Brotz Family Foundation: Pledge once Coastal Mgmt Decision

II. Seminar, Exploration, Celebration: Thursday, June 6 and Saturday, June 8

- Friday Lecture: The Economics of Good Living
 - Ecological Economics Panel
 - Reflections by our Legislators
- Saturday Tour: The Value of our Lakeshore
 - Kingfisher Farm and Schaper Sands: Invasive Species & Landscape Management with Ron Schaper, John Kirsch and Dale Folz
 - Beach Clean Up with Jeff Rochon and Demo by Tom Burns
 - Celebrating Collective Action: Russ Tooley and Michael Winn

III. Invasive Species Removal

- UW Manitowoc Student Independent Project
 - Resource Library
 - Mapping on Private and Public Lands
- Collective Resources and Pooling Funds
 - DNR River Planning Grant
 - Private Landowner Donations
 - Partners include Friends of Hika Bay, Pine Creek Conservancy, Calvin Creek Homeowners Association, Manitowoc County Parks, Kingfisher Farm/UWGB, Glacial Lakes Conservancy
- Removal and Maintenance
 - Licensed Applicator at Fischer, Point, Pine, Calvin Creeks
 - Volunteer Teams: John, Rob, Ron

IV. Water Quality Sampling

- Data Analysis
 - Submission to DNR by March 1
 - Analysis of 2011-2012 Trends
 - Focus on Problem Areas for June, July Sampling
- UW Manitowoc Interns
 - March Recon

- April – May - June Weekly Sampling and Rain Events
- July – August Monthly Sampling and Rain Events
- September – October Data Analysis
- November Public Presentation

Friends of Hika to do list

Summer 2014

1. viewing platform

- Schuette Machining – Contact Dale
- Design – John plans to do an update
- Photos – Jim’s archives, Larry Rupp, Cleveland Bank, Other Contacts
- Bricks – Robert and Kathy Klessig via the Block property

2. ridge swale

- removing last berm – contact Ron Schmidt, Sheboygan County
- scraping for the swale
- ground cover and forbs – contact Westview Nursery
- sedges and wetland plants in the swale – contact Westview Nursery
- tree planting – finish off trees now located in waste water treatment area

3. Centerville Creek corridor

- check and inventory trees
- manage reed canary grass
- additional work upstream past confluence
- report to town of Centerville – interested in tying trails together: rail to trail, snowmobile, etc. Note that with the LS redo and plans for upgrades from Cleveland north. Chris Kuenel is a good contact for trails.

Note that Russ Tooley is setting up a joint Planning Commission / Zoning along with the Town Board on Tuesday, June 10

4. fundraising

- waiting for Board to approve construction oversight bids and bids for contracting the construction of the bridge
- West Foundation
- Cleveland State Bank
- Local effort with pavers

5. volunteers

- saw Richard Opie at the pancake gig at Klessig’s – is interested
- John and Idell will contact others to create a small be effective work group

6. outreach

- Video editing – Centerville Historians
- News release

Budget

Stewardship Investment Fund

1. Lakeshore Water Institute at UW-Manitowoc for intern support and supplies: \$2,500
2. Hika Shores – Berm removal and scrape: \$2,500
3. Hika Shores – forbs and ground cover: \$1,000
4. Friends of Hika Bay invasive species work: \$2,000

DNR River Planning Grant

1. Invasive species supplies: \$1,200
2. Invasive species contract work: \$1,000
3. Support (salary) for interns: \$1,000
4. Supplies for interns at UW-Manitowoc: \$1,200

AIS Manitowoc County Lakes Association Grant (need to get the amount from Tom Ward)

1. Demonstration plot
2. Mailing to property owners

LISMA Project Grant (pending)

1. Invasive species work: \$3,000

Friends of Hika Bay Work Task Schedule 2014

Information Gathering and Outreach

Time	Task	Lead	Equipment	Supplies	Protective
April	Verify appropriate plant mix for Hika Shores	Ron		Visit to Point Beach and Pleasant Prairie	
May-August	Assemble informational boards	John, Jim		Posters, glue, polyurethane, clips	

Hika Shores

Time	Task	Lead	Equipment	Supplies	Gear
May	Invasive Plant Removal	John	Sprayer, brush cutter, chainsaw	Herbicide, Fuel	Protective eye glasses, gloves, boots
May	Remove small trees and shrubs, cut live stakes	John	Chainsaw, brush cutter	Stump paint	Protective eye glasses, gloves, boots
May	Rake beach and burn debris	John	Rakes	* Burn Permit	Protective eye glasses, gloves, boots
May	Remove berm	Contractor – Schmidt Excavating			
May	Final grading	Contractor – Schmidt Excavating			
May	Soil preparation	Jim	Rotor tillers	2 Loads of composted mulch	
May	Plant cover seed	Contractor – T&L Services			

Centerville Creek Corridor

Time	Task	Lead	Equipment	Supplies	Protective
April - May	Invasive species removal	John	Sprayer, brush cutter	Herbicide, fuel	Protective eye glasses, gloves, boots
May	Stake in dogwood, install woody debris	John	Sledge hammers, hatchet		Protective eye glasses, gloves, boots

Lakeshore Natural Resource Partnership - 2015 Action Plans

Adopt a Park – Fischer Creek

Volunteer Based

Description	Action Steps	Who	When
Educate & promote the outdoors	Interpretive signs of forest and beach ecology	John & Michaelleen	Put together timeline at next meeting
Get rid of honeysuckle	Chainsaw and cut brush and haul away	Rob	Ongoing
Maintain Trail	Cut with mower	Rob	Ongoing
Beach & Vista Clean-up	Clean up trash and debris	Rob	To be determined at next meeting
Water quality testing	Work with volunteers and UW Manitowoc	Jim	To be determined at next meeting
Bench and signage	Put at entrance and north end of trail	Rob	To be determined at next meeting
Tree Planting	Plant trees	Rob	April 25
Monthly Park Walk Through	Organize Volunteers	Jim and Jenn	Ongoing

Adopt a Park – Hika Bay

Description	Action Steps	Who	When
Plant plugs and seeds on ridge/swale	Organize Volunteers/Leaders	Michaelleen & Jenn	To be determined at next meeting
Mulch and compost	Get loads from County	Village	After meeting with Village on March 11
Mulch and compost	Organize Volunteers/Leaders	John	To be determined at next meeting
Beach Clean up and invasive species removal	Organize Volunteers/Leaders	John	To be determined at next meeting

Monthly Park Walk Through	Organize Volunteers	Jim and Jenn	To be determined at next meeting
---------------------------	---------------------	--------------	----------------------------------

Creek Stabilization

Youth Conservation Corps

Description	Action Steps	Who	When
Cedar Posts	At John's, need to insert	John	To be determined at next meeting
Dogwood Spikes	Collect and plant	John	To be determined at next meeting
Willow	Collect and plant	John	To be determined at next meeting
Ferns	Collect and plant	Jim	To be determined at next meeting

Viewing Gazebo

Friends of Hika Bay and Village of Cleveland

Description	Action Steps	Who	When
Design	Engineering drawing	John	By March 11
Village Approval	Present to Public Works Committee	Jim	April 2
Contractor	Hire	Stacy, Jim	In conjunction with Bridge construction
Interpretive Signage	Develop and frame	John, Jenn	Once gazebo is complete but ongoing in development

Corridor walk

Friends of Hika Bay and Village of Cleveland

Description	Action Steps	Who	When
Walkway	Clean up wood and debris	Village Staff	This spring after meeting on Mar 11
Deck	Repair	Village Staff	This spring after meeting on Mar 11
Walkway	Create a meandering path	Village Staff	This spring after meeting on Mar 11
Benches	Place at strategic locations	Village Staff	This spring after meeting on Mar 11

Hika Park

Work Jobs for Village Crew – January 2015

The job tasks for the Village Crew are outlined in priority fashion.

#1. Create a space for the bricks we are getting as donated materials for the viewing deck. We need a place and pallets (if possible) in the physical plant area that is easy to access for our contractor. Once we are ready for construction, the area will need to be cleared including weeds that have crept along the bank as well as removing a lower branch on the Cottonwood next to the viewing platform area (see map).

#2. Clear out the walkway along the foot of the creek from the dam site to the Booda Viewing Deck. Please salvage these materials as they can be used for some of the walkways and additional needs as they arise.

#3. Create a space for materials in the water treatment area moving salvaged materials away from the physical plant building including pipes, lumber, guardrails, and other materials.

#4. Put up the park benches in the Centerville Creek area. I will have a plaque for one. We'd like to engrave "Friends of Hika Bay" in the other bench. We'll do this shortly.

#5. Put up the We All Live on the Water signs – one at Centerville Creek and one at the end of the beach near Otto and Laura's. I gave these signs to Steve and they should be in the physical plant area.

#6. Once the Hika Shores property is mulched, remove the erosion curtains.

#7. Once erosion curtains are removed there will be room for one to two passes with the lawn mower along the western side of the Hika Shores property along Hwy LS. Friends of Hika Bay will mark the exact area.

FOHB Strategic Planning Meeting

Jim Kettler's House on 11/05/2015

Present: Rob Pragalz, John Kirsch, Jim Kettler, Michaelleen Golay, Jenn Hansmann

Agenda

Status Update

- Coastal Management Grant; Bridge, Platform, Signage
- Brick Paver Fundraiser
- Hika Shores

Coastal Program Grant - \$15,000 available

- Wish List for Habitat Enhancement
- Invasive Species Management in Centerville Creek Corridor
- Tree Planting in Hika Park and Fischer Creek Park

DNR River Planning Grant – Due December 10

- Water Quality
- Invasive Species
- Urban Forestry

FROM SPRING MEETING

Adopt A Park

- Hika Park
- Fischer Creek Park

Goals for Fischer Creek:

- make it more inviting for people to utilize the park
- education and promotion of the outdoors
- maintain trails
- get rid of honeysuckle and cement rip rap near the parking lot/silo and the honeysuckle along the northern trail. Attack in early spring with chainsaws, pruners and poison
- clean up beach way and vista access
- advertise for LNRP
- bench and sign at northern point of trail
- water quality testing
- suggestions were to have a litter clean up at Fischer Creek in June and September, tree planting and protecting in the spring and shrub cutting all summer long.

Goals for Hika Park:

- plants/plugs and ground cover seeding on the ridge/swale
- mulch and compost
- interface with LTC
- beach clean-up and invasive species

Goals for both Fischer and Hika:

- Create interpretive/educational displays that are transportable and will withstand weather.
- Present info on beach and forest ecology and history of our two creeks
- Calendar of events: once a month (alternating a week night and a weekend morning/afternoon)
- Alternate work day/education day/volunteer appreciation day

Volunteers:

- Michaelleen has students that can do a service day and also have students help on work days, if the schedule works out. They will not be using power tools.

Outreach Outlets:

- Bondes
- LTC (Gus)
- Facebook
- Cleveland Newsletter
- LNRP Newsletter and website

Village of Cleveland Adopt-a-Park Program

Village of Cleveland: Interim Public Works, Stacy Grunwald

Hika Park – LNRP and the Friends of Hika Bay: Jim Kettler jim@lnrp.org , Jenn Hansmann jenn@lnrp.org, & Michaelleen Golay Michaelleen.gerken@gmail.com

Boat Landing – Cleveland Fish and Game

Veterans Park – Athletic Club

Dairyland Park – Lions Club

Purpose:

The Adopt-a- Park program was created to give citizens of all ages an opportunity to volunteer in our village parks. Their time would be spent doing upkeep, cleaning, maintenance, beautification, and preservation of our park helps to provide a safer, more beautiful park experience for the entire community.

Everyone is welcome and encouraged to participate in the program; individuals, families, churches and businesses can all do their part to help maintain and improve our park. The parks in our community can accommodate large groups or even one person to maintain.

The Village of Cleveland Adopt-a- Park program creates a powerful partnership between the Village of Cleveland, its citizens and local community groups. Each park would have a host organization that adopts the park. This partnership allows valuable communication and feedback between these groups that result in cleaner, safer and more user-friendly parks in the community.

Benefits:

Civic Engagement: The Adopt-Hika Park program fosters civic engagement by providing an opportunity for volunteers to give back to the community. Adopt-Hika volunteers are able to make noticeable improvements to our village's parks and the result of these improvements will be enjoyed by the volunteers, as well as the rest of the community.

Environmental: Not only does the Adopt-Hika Park program improve the environment by picking up trash and planting flowers and trees, it also raises awareness of the importance of protecting our natural spaces. As citizens observe the positive changes occurring in their neighborhood parks, they may be less likely to litter themselves and instead show respect and care for the parks available to them.

Safer, more beautiful parks: Volunteers in the Adopt-Hika Park program provide services that go beyond what the Village of Cleveland has the time or budget for. While regular maintenance like grass cutting will be done by the Public Works Department, Adopt-Hika Park volunteers add special touches to the park, like mulch, flower beds, and trash removal. An adopted park is a safer park because it is free of

Village of Cleveland Adopt-a-Park Program

waste and other potentially hazardous items. Adopt-Hika Park volunteers save our village money while continuing to improve and service the village's parks.

Expectations of Adopt-Hika Park Volunteer Groups:

- Adopt-Hika Park groups are expected to sign a one year contract with the Village of Cleveland. During the year, volunteer groups are expected to organize at minimum a spring and fall trash pick-up in each Park.
- Also, once a month volunteers are asked to enter the park and do a thorough walkthrough. The purpose of a walkthrough is to identify damage, vandalism, or other things that need to be addresses by the Village of Cleveland. A form will be available for you to report what you found during your walkthrough.
- Other projects, like planting plants, adding mulch, pulling invasive species, and other maintenance may be completed with approval from the Village of Cleveland Public Works Director.
- Volunteer groups may do their own fundraising for special projects like picnic tables and play equipment with approval from the Village of Cleveland.
- For volunteer groups that are unable to commit to a yearly contract, one-time events are also available. One-time events are perfect for groups that still want to do their part but are unable, or not interested in, officially adopting a park.
- Each volunteer group will designate a Head Volunteer to be the contact person for each park. The Head Volunteer will fill out the application form and leave their contact information. The Head Volunteer will also ensure each volunteer signs a waiver of liability before any volunteer work is done.
- The Head Volunteer will inform the Village of Cleveland, of clean-up dates at least one week in advance to ensure supplies like trash bags and tools can be provided, and so trash can be removed in a timely manner post clean-up. Supplies for the Adopt-Hika Park program like trash bags, disposable gloves, and safety vests will be kept at the Public Works Garage.

Guidelines:

- More than one group or individual may adopt each park.
- All volunteers under age 18 must be supervised by a responsible adult.

How to sign up:

- First, complete the application section of the form on the following page. Feel free to add comments about specific areas or projects you and your group are interested in.
- Next, the Village of Cleveland will review the application and match you to a project in need of adoption.
- Following approval, the Village of Cleveland will complete the agreement section of the form and the Head Volunteer will be asked to submit liability forms for each volunteer interested in participating. Volunteers under 18 must have their liability form signed by a parent or legal guardian.

Village of Cleveland Adopt-a-Park Program

- When the application/agreement form and all liability forms have been turned in, a copy of the signed agreement form will be mailed to you, at which time your group has officially adopted the park and project(s) listed.
- It is the responsibility of the Head Volunteer to schedule the spring and fall clean-up dates. It is also the responsibility of the Head Volunteer to ensure that each month at least one volunteer enters the park and completes a walkthrough and that the walkthrough form is submitted to the Village of Cleveland.
- Please schedule all volunteer activities at least seven days in advance to allow the Village time to organize dropping off of supplies at the worksite, or for a volunteer to pick up supplies at the Department of Public Works at 1150 West Washington Avenue. Cleveland, WI.

Safety Guidelines

- Bring work gloves, close-toed shoes or boots, and wear light colored clothing and long pants.
- Bring sunscreen and apply it regularly to prevent sunburn. Hats and sunglasses are also recommended.
- Beware of bees, poison ivy, poison oak, and other irritants. Avoid bites by wearing insect repellent.
- Do not overexert yourself: take breaks and drink plenty of liquids. Be sure to bring water with you.
- Work during daylight hours and within the parks posted hours unless permission is given.
- Do not use power tools and motor-driven equipment unless you have been preauthorized and trained to do so.
- Postpone or stop cleanup immediately if rain, lightening, or heavy winds are present.
- Leave dead animals on site and report them to the Village of Cleveland.
- Do not pick up materials you suspect might be hazardous, such as needles or drug paraphernalia. Report suspect materials to the Village of Cleveland Police Department through their dispatch line: 920-693-3442
- Do not bring pets, or leave pets in the car, while you volunteer in the park.
- Return the Volunteer Hour Form to your Head Volunteer.

Volunteer Appreciation Picnic BBQ

Host: Friends of Hika Bay

When: Sunday, July 19 from 3:00 to 6:00 pm

Where: Hika Park Shelter

In appreciation for your volunteerism and commitment to our rivers, creeks and lakes, you are invited to gather at the Hika Park shelter near the boat launch for brats, hamburgers, veggie burgers, and refreshments.

Come learn more about the Friends of Hika Bay.

We hope to see you there.

Please RSVP by Wednesday, July 15, 2015 to
jenn@lnrp.org or 920-627-1799



Friends of Hika Bay

Calvin, Pine, Point, Fischer & Centerville Watersheds

Volunteer Appreciation Picnic-July 19

In attendance:

John and Idell Kirsch

Jim Kettler

Patti Grupe

Jenn Hansmann

Michaelaileen Golay

Beth and Lee Trotta

Mary and Jim Klein

Beverly Rawling



Amy Fettes

Titus, Tor and Leif Seilheimer

Cletus Wagner

Larry and Cindy Huhn

Lynn and Rick Scroggins



Hika Bay

Volunteer Day

Saturday, June 13

**Municipal Park, Cleveland WI.
Lakeshore Drive**

9:00 a.m.— 12:00 p.m.

- ♦ Show your support for the community by volunteering
- ♦ Work involves planting plugs and mulching existing trees
 - ♦ Refreshments provided
 - ♦ Please bring work gloves
 - ♦ Contact:: jenn@lnrp.org



Friends of Hika Bay

Calvin, Pine, Point, Fischer & Centerville Watersheds

A
Proud
Program
of
the:





FISCHER CREEK CONSERVATION AREA



Buckthorn found on cliff

Trail needs clearing north of the loop

Scotch Pine Tree Forest

Honeysuckle invades both side of the entire trail

Legend

- trail
- beach
- Lake Michigan
- wooded
- open
- Bluff

- parking
- toilets
- viewing area
- hiking
- picnic area

Phragmites found along Fischer Creek and the cliffs on the south beach

Scotch Pines identified south of the parking area

HOW TO MANAGE FISCHER CREEK CONSERVATION AREA

1. What should our long-term control strategies be?
2. Where should we focus our efforts?
3. What is/should be done to stop\slow the spread?

Properly identify each species before eradicating.

A chainsaw will be required to clear paths.

A training will be available for those who participate in controlling this area, a log has been created on the website: www.hika-bay.org to document any activity.

INFORMATION ON THE INVASIVES AT FISCHER CREEK CONSERVATION AREA

BUCKTHORN

Common and Glossy buckthorn are shrubs or small trees growing up to 20-25' tall, often with several stems and a spreading crown. Its bark is gray to brown with prominent light-colored lenticels. Cut branches reveal yellow sapwood and orange heartwood. Twigs often end in small sharp spines.

CONTROL:

- Manual/Mechanical: Hand pull small plants. Dig or use a leverage tool on larger plants. Cutting without herbicide treatment will result in resprouting. Burn in spring to kill seedlings.
- Chemical: Foliar spray with metsulfuronmethyl or triclopyr. Cut stump or basal bark treat with triclopyr or glyphosate in late fall through the winter.

PHRAGMITES

Phragmites, also known as common reed, is a perennial wetland grass that grows 3-20' tall with dull, rigid, hollow stems. It creates dense clones. Canes persist throughout winter.

CONTROL:

- Manual/Mechanical: Mow (where possible) 3-5 times during the growing season to decrease stand density. Mow or burn after a chemical application for additional control and maintenance (i.e. apply chemical in late summer and burn in late fall)

- Chemical: Foliar spray or bundle, cut, and treat with imazapyr from June-September.

HONEYSUCKLE

Bush honeysuckles are dense, multi-stemmed shrubs, 6-12' tall. Older stems may have shaggy, peeling bark and are often hollow between the nodes.

CONTROL:

- Manual/Mechanical: Hand pull small plants. Dig or use a leverage tool on larger plants. Cutting without herbicide treatment will result in resprouting. Burn in spring to kill seedlings.
- Chemical: Foliar spray with metsulfuronmethyl, triclopyr, or glyphosate in early spring prior to leaf out of native species. Cut stump treat with glyphosate or triclopyr ester.

SCOTCH PINE

A coniferous tree in the pine family, reaching 70 to 120 feet in height and a diameter of 3 to 5 feet. The bark is silvery gray and shiny when young, then becoming reddish brown, fissured and scaly when older. Brittle twigs are dark, yellowish-gray, and smooth. Needles are 1½ to 3½ inches long, bluish-green or dark green, stout, and born in bundles of 2 or rarely 3. The cones are 1½ to 2½ inches long, short-stalked, solitary or in pairs, usually pointing backward, and grayish or reddish in color. It reproduces by seeds that range from tan to almost black and vary in size according to the geographic area. The root system is made up of horizontal roots close to the surface and a taproot.

CONTROL:

- Manual: Hand pull young seedlings; cut larger trees
- Chemical: It can be effectively controlled using any of several readily available general use herbicides such as glyphosate or triclopyr. Follow label and state requirements.

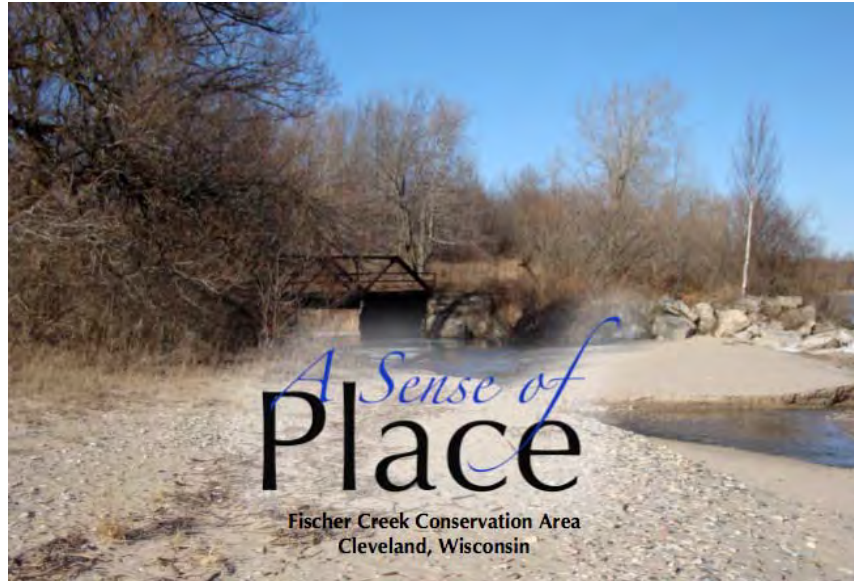
For more information on these invasive species, see: www.ipaw.org

Sense of Place

Fischer Creek: *'Worth Fighting For'*

A 160-acre Conservation Area lies in the Village of Cleveland, Wisconsin, thanks to a group of concerned citizens who came together in the early 1990s to save it from development. This story includes a mention of the contentious aspects often underlying

and driving such projects throughout the decades before and after the first Earth Day in 1970, and attempts to express what captured the hearts of this passionate group of area residents.



On the website, Fischer Creek is described as the most recent addition to the Manitowoc County Park System. “This 160-acre site was purchased by the State of Wisconsin using Stewardship money along with a contribution from Manitowoc County...(and) is owned by the State and developed and maintained by the County.”

So, why was Fischer Creek *'Worth Fighting For'*, included in a feature documentary narrated by James Taylor in the latter 1990s as the Wisconsin poster child alongside three other citizen-based projects in Canada and Michigan?

First is its beauty and regional significance: Fischer Creek Conservation Area includes 1800 feet of Lake Michigan shoreline flanking the mouth of the Creek. The view is magnificent, with abundant bluffs reminiscent of their celebrated sisters to the north in Door County. Wildlife, bird species and wildflowers adorn its beach and trails through the park. It provides a sweet respite to the soul and song to the senses dulled by life's stresses and crying out for the renewal only Nature can provide. And, families of fishermen and women can bring their children there to recreate and bond.

Lifelong resident Don Pirrung, featured in the film with John Kirsch, Rolf Johnson and others, were part of a citizen's group who came together as Friends of Fischer Creek in the early 1990s when a Chicago-based developer wanted to put condominiums on the property, requiring annexation by the Village Board. Don brought to the group an engineering perspective.

Don says when they looked at the cost/benefit analysis of the proposed development, “What we'd gain in the short term would have been a drop in the bucket. We then distributed fact sheets to the community and we became a majority with a groundswell of support.

“This journey was a wild rollercoaster ride of emotions, from the highest highs to the lowest lows, sometimes in the same afternoon,” he adds. “What makes (the area) so special is its natural beauty and impressive bluffs.

“It also has archeological significance with State Historical Sites registered on the property. An old steel bridge dates back to a military road connecting Green Bay to Milwaukee. A woman who met with our Friends group said that for hundreds of years the site was considered sacred where Native Americans came to pray because of its unique overlook of Lake Michigan.



Fischer Creek draining into Lake Michigan

“The property has a special relationship with residents in the area. As kids we played there and as adults we still savor its natural beauty... Nature is its own entertainment center. Trout migrate in the spring through its stream.”

FOFC faced an enormous battle. They first decided to create the state conservation area in order to preserve it and subsequently had to raise the funds and work with the Village Board to approve the park’s creation. They persevered, despite the challenges, and on January 30, 1995, the Board officially voted to deny the annexation request from the developer.

Don reflects, “In over 37 years of engineering projects I’ve overseen and developed, participating in the creation of Fischer Creek Park was the most amazing thing I’ve ever been involved with. It shows how a group of people coming together can make a huge difference in our lives and environment. We focused on the elements of Nature as inspiration and let her speak for herself through a committed group of local residents.”

TREE PLANTING

Saturday, April 25

Fischer Creek, Cleveland, WI. South Parking Lot

We are looking for volunteers!

9:00 a.m.—12:00 p.m.

Refreshments to follow.



**A great
opportunity to give
back to your
community park.**

**We will be
planting trees and
removing
honeysuckle.**

Please bring a shovel and a pair of gloves.

[Sign up today!](#)

contact: jenn@lnrp.org or 920-627-1799

SATURDAY, APRIL 30, 9:00 A.M.-12:00 P.M.

TREE PLANTING

One generation plants the trees, another gets the shade
~Chinese Proverb



MEET AT THE SOUTH ENTRANCE TO THE
FISCHER CREEK
CONSERVATION AREA
CLEVELAND, WIS.

BRING GLOVES AND WEAR GOOD SHOES
WATER AND SNACKS PROVIDED

CONTACT: [JENN@LNRP.ORG](mailto:jenn@lnrp.org)

ALL VOLUNTEERS ARE WELCOME



Friends of Hika Bay
Calvin, Pine, Point, Fischer & Centerville Watersheds

P R O U D
P R O G R A M
O F :



2016 Work summary for Fischer Creek Conservation Area Feb 2016 – April 2016

- Work consists of invasive species removal of mainly Honeysuckle
- Other invasive species removed include Autumn Olive and Buckthorn
- Two main areas were addressed: abandoned farm field near south parking lot and old farmstead and successional woods area near north parking lot
- Invasive species hand cut and removed and placed in large piles for disposal. Thirteen piles were amassed at north lot location. Piles on average eight feet by 6 feet of densely packed material. Six piles at south lot area with more to be added with additional brush removal.
- Invasive species are poisoned with stump treatment(glyphosate)
- Partnership with Manitowoc county involves the parks department picking up refuse piles and disposing of them properly
- Management of these areas will involve monitoring effectiveness of stump treatments and hand removal of small seedlings
- Area near south lot honeysuckle removal will involve native habitat restoration planting of trees and perennial plants
- Work to continue at park through early May and include: expand invasive species removal in areas where work was performed during Spring 2016, address vegetative encroachment on park hiking trails, plant pollinator seed mix at several selected sites, plant native trees including public volunteer tree planting event on April 30
- Square footage of field to the north of south parking lot where honeysuckle was removed: 112985 sq. ft. or total acreage: 2.59
- Square footage of three areas of honeysuckle removal at old farmstead at north lot location: 12901 sq. ft. or .29 acres, 3078 sq. ft. or .07 acres, 2021 sq. ft. or .04 acres

Invasive Species Removal

Hika Park: Overall park size is approximately 14 acres with a focus on invasive species removal at Hika Shores including the entire beach area of both the Hika Shores and Boat Landing, and the Centerville Creek corridor.

Fischer Creek: Overall park size is approximately 160 acres. Invasive species removal in Spring 2016 included:

- Square footage of field to the north of south parking lot where honeysuckle was removed: 112985 sq. ft. or total acreage: 2.59
- Square footage of three areas of honeysuckle removal at old farmstead at north lot location: 12901 sq. ft. or .29 acres, 3078 sq. ft. or .07 acres, 2021 sq. ft. or .04 acres

Restore the Shore

Lakeshore Natural Resource Partnership

Interim Report 13Apr16

Restore the Shore is a cooperative venture, and is anchored by Woodland Dunes, Lakeshore Natural Resources Partnership, and the Lakeshore Invasive Species Management Area. The project involves removing invasive species and replacing them with native species in order to improve habitat and food sources for wildlife, especially migratory birds. Anyone can participate, and our intent is to provide help and freely share information on improving habitat along the shore. This proposed project would be part of that effort.

Friends of Hika Bay

The steering committee met on January 21 and April 6 to develop a work plan and prepare for the volunteer day. See attached work plan.

Hika Park

Met with Village Plan Commission on April 6 to finalize plans for pedestrian bridge and interpretive kiosks. The kiosk at the Hika Shores portion of the park will highlight the habitat enhancement efforts supported by these funds.

Two plant orders were placed: 1) trees and shrubs from Forrest Keeling Nursery in combination with Woodland Dunes; and 2) a pollinator mix from Agroecol. See attached list of species and overall cost structure.

Fischer Creek Park

Three plant orders were placed: 1) trees and shrubs from Forrest Keeling Nursery in combination with Woodland Dunes; 2) a pollinator mix from Agroecol; and 3) trees from the annual Sheboygan County tree sale. See attached list of species and overall cost structure.

Invasive species removal has been ongoing with a focus on honeysuckle. Manitowoc County has been a partner removing the brush piles. See Fischer Creek Work Progress Report with attached photos.

Volunteer Day

A volunteer day is planned for April 30 to plant the pollinator mix and trees. See attached poster.

LNRP and WaterGrass

Development and Implementation of a Membership Database



Introduction

LNRP received a grant from the National River Network to develop and implement a relational database called WaterGrass. Beyond the grant, LNRP also received a donation for non-profits from the parent company Salesforce.Com. This donation allows us to receive 10 Enterprise Edition licenses and full training for the watershed-based package.

WaterGrass is a customized version of the industry-leading Salesforce Enterprise database, supported by a collaborative effort of LeadGreen and River Network.

It's a web database, and the home user gets licenses for 9 individuals in the organization to use it. They can access it wherever they've got an internet connection. One license stays with LeadGreen to monitor success and additional opportunities for product development.

Our consultant from LeadGreen is Baird Straughan who has been contracted by the River Network to help groups such as LNRP and partner groups. The WaterGrass Team is explicitly dedicated to helping watershed organizations succeed, and to strengthening the river and watershed movement in general.

It was created because, after a decade of supporting watershed organizations, it was recognized that what holds many groups back is the lack of adequate information systems and business practices. WaterGrass helps keep the whole organization on track by tracking all revenue and donations, creating campaigns, organizing multiple layers of memberships, and cross-referencing all data.

Implementation

Beginning in February 2012, LNRP engaged with Baird Straughan to outline a service contract. Both LNRP and LeadGreen signed that contract on March 26, 2012. Baird and his staff did the initial data load including grants, corporate sponsorships, and memberships. At that time, LNRP had four membership funds: Stewardship Investment Fund, Niagara Escarpment Resource Network (NERN), Friends of Hika Bay, and the Water's Edge Artists.

LNRP internally launched the program in August after several months of initial training. We are able to train five individuals:

1. Jim Kettler, Executive Director
2. Jim Olson, LNRP Treasurer
3. Eric Fowle, NERN Chair
4. Sherrill Anderson, Regional Outreach Coordinator
5. Jenn Hansmann, Community Relations Coordinator

We use it in conjunction with our Cash Receipts Journal that is logged by the LNRP Treasurer who holds a seat on the Board of Directors. We also enter all participants from our events and seminars. We have assigned one staff member to be our informational conduit and responsible for data entry. We developed the following set of responsibilities that are associated with the WaterGrass database:

- Develop and manage elements of the LNRP membership program
- Sign up and renew members of the LNRP
- Seek new membership through the existing LNRP networks
- Seek “We All Live on the Water” sign sponsorship
- Recognize donors and corporate sponsors, and generate additional interest and support
- Maintain, keep and administer a LNRP member database
- Provide materials and information about the LNRP for new members
- Respond to questions and inquiries related to LNRP membership
- Process membership applications and send recognition letters

We also needed to transfer from Constant Contact to Vertical Response for our electronic mailing. We have sent two quarterly newsletters since August and a number of email alerts and announcements using a list generated by WaterGrass and delivered through Vertical Response.

We have used it for tracking participants at our annual fundraiser which is a barn dance held each September, a two-day climate forum, a two-day symposium on cultivating a sense of place focused on the Niagara escarpment, multiple seminars, and in preparation for our Sustainability Fair we are co-hosting on April 27, 2013.

We also use it in concert with our *We All Live on the Water* Campaign. In February 2013, just over a year after signing our contract, we hosted a training session with representatives of our four other friend groups that came under our program umbrella in 2012 and where we became fiscal agent. These include Friends of the Branch River, Friends of the Manitowoc River Watershed, Friends of the Twin Rivers, and the Little Manitowoc River Partnership. We are planning one-on-one engagements with each friend group to do needs assessment, package protocols, and set up user access.

Our hope is to also use it for the Lake Michigan Stakeholders of which Jim Kettler, Executive Director of LNRP acts as co-chair of the steering committee.

Current Statistics

- Custom Fields: 243
- Custom Formula Fields: 15
- Accounts Populated: 1,496

Challenges and Opportunities

Challenges:

1. For the needs of LNRP, WaterGrass has an overwhelming amount of information that LNRP may never use, creating a cumbersome feeling and making it hard to get to the nitty gritty of what we actually need to get done.
2. When we want to enter batch data, it is difficult and requires many steps therefore taking more staff time to enter each contact individually.

Opportunities:

1. The support from the WaterGrass team has been encouraging and very helpful. In preparation for our mass emails, they have been very thorough in creating a template and helping us reach out to all of our members.
2. The efficiency of running reports has been beneficial to creating lists and completing needed follow-up.
3. The database has allowed us to organize the groups that are under our umbrella so that we can keep their specific events and information separate from the rest.

Conclusions

Admittedly, we had a fairly steep learning curve and difficulty finding sufficient time to invest in training. We have no staff member trained in Information Technology and we all work from our homes.

However, the staff at LeadGreen has been extremely helpful and patient. We have gone ahead and signed up for our second year with the full package of upgrades and training.

We still have not captured the full capacity of the database but are slowly but surely getting there. We also want to further develop the automatic mailings and some other features that we have yet to use.

Our hope is that we capture value in the upcoming year as we have collectively looked at a two-year window to test the effectiveness of WaterGrass for our organization.

(Article for Cleveland Newsletter, May 2015)

Hika Park Updates

Hika Shores Restoration

The final steps to construct a habitat community similar to a ridge swale ecosystem will be completed at the Hika Shores property this spring. The constructed berm was planted with trees last year and treated for invasive species. This spring the berm was planted with a clover rye mix and will be overlain later this year with a mix of wildflowers. The swale was excavated last fall and was planted this spring with a sedge meadow mix. Additional cedar trees will also be planted this spring.

Pedestrian Bridge, Viewing Platform, and Interpretive Trails

Bids will be going out this spring for the construction of a pedestrian bridge that will link the southern and northern parcels of Hika Park. The bridge



Similar Bridge Design (*provided by Cedar Corp*)

will create safe passage from the boat landing to the Hika Shore property, allowing park users to avoid walking directly on Lakeshore Drive and through the Public Works facility. The project will provide better access to the Hika Shores natural area and more Lake Michigan frontage than is currently available.

The Village of Cleveland expanded Hika Park to include the restored stream channel and the area of the former millpond, and Hika Shores. The restoration improved safety and allowed the Village Board to open more land for public use, increasing Hika Park from 2.21 acres to 13.85 acres.

The project will fulfill goals originally identified in the Village of Cleveland's 1985 Waterfront Plan, further refined in the 1998 Hika Park Plan, and supported by the 20-Year Comprehensive Plan completed in 2007.

For the long-term maintenance of the park, Friends of Hika Bay has formally adopted the park as part of the Village of Cleveland's Adopt-A-Park program. FOHB has cultivated a dedicated group of volunteers that will provide community support for the long-term sustainability of this very valuable community resource. The Village is indebted to them for their commitment and support.

Hika Park - Species List 2016

Total Cost

\$1,426.27

Forrest Keeling

Tree	Item Number	Size	Cost	Hika Number	
Chokeberry	15350	S3-3CG RPM	\$9.40	5	\$47.00
Downy Serviceberry	17733	S3-15 RPM	\$49.00	5	\$245.00
Silky Dogwood	15359	S3-3CG RPM	\$9.40	5	\$47.00
Ninebark	15377	S3-3CG RPM	\$9.40	5	\$47.00
Staghorn Sumac	15386	S3-3CG RPM	\$9.40	5	\$47.00
Nannyberry	1979	S3-3CG RPM	\$9.90	5	\$49.50
American Highbush Cranberry	1992	S3-3CG RPM	\$9.90	5	\$49.50
Hackberry	13658	S3-5 RPM	\$20.75	5	\$103.75
Cockspur hawthorn	1393	S3-3CG RPM	\$11.75	5	\$58.75
Black Cherry	15412	S3-3CG RPM	\$11.75	5	\$58.75

Agroecol Order 2016

\$673.02

Wildflowers: Wild Columbine, Butterfly Weed, Smooth Blue Aster, New England Aster, Partridge Pea, White Prairie Clover, Purple Prairie Clover, Illinois Tick Trefoil, Rattlesnake Master, Prairie Blazing Star, Foxglove Beard Tongue, Prairie Cinquefoil, Yellow Coneflower, Black-Eyed Susan, Stiff Goldenrod, Showy Goldenrod, Ohio Spiderwort, Golden Alexanders

Grasses, Sedges & Rushes: Side Oats Grama, June Grass, Little Bluestem, Prairie Dropseed

Fischer Creek Park - Species List 2016

Total Cost \$3,358.27

Sheboygan County

Tree	Item Number	Cost
White Pine	2 bundles @ \$14.00	\$28.00
Swamp White Oak	2 bundles @ \$13.00	\$26.00
Red Oak	2 bundles @ 13.00	\$26.00
White Cedar	1 bundles @ \$14.00	\$14.00
Shagbark Hickory	1 bundle @ \$16.00	\$16.00
White Birch	3 bundles @ \$12.00	\$36.00
Nannyberry	3 bundles @ \$12.00	\$36.00
Sugar Maple	2 bundles @ \$16.00	\$32.00
Black Cherry	2 bundles @ \$13.00	\$26.00
Jack Pine	25 total @ \$30.00	\$30.00
Black Spruce	1 bundle @ \$20.00	\$20.00
American Plum	1 bundle @ \$14.00	\$14.00
Ninebark	30 total @ \$48.00	\$48.00

Forrest Keeling

Tree	Item Number	Size	Cost	Fischer Number
Chokeberry	15350	S3-3CG RPM	\$9.40	5
Downy Serviceberry	17733	S3-15 RPM	\$49.00	5
Silky Dogwood	15359	S3-3CG RPM	\$9.40	5
Ninebark	15377	S3-3CG RPM	\$9.40	5
Staghorn Sumac	15386	S3-3CG RPM	\$9.40	5
Nannyberry	1979	S3-3CG RPM	\$9.90	5
American Highbush Cranberry	1992	S3-3CG RPM	\$9.90	5
Hackberry	13658	S3-5 RPM	\$20.75	5
Cockspur hawthorn	1393	S3-3CG RPM	\$11.75	5
Black Cherry	15412	S3-3CG RPM	\$11.75	5

Agroecol Order 2016 \$2,253.02

Wildflowers: Nodding Lavender Hyssop, Nodding Onion, Leadplant, Butterfly Weed, Sky-Blue Aster, Heath Aster, Smooth Blue Aster, Partridge Pea, Lance Leaved Coreopsis, Prairie Coreopsis, White Prairie Clover, Purple Prairie Clover, Pale Purple Coneflower, Rattlesnake Master, Early Sunflower, Rough Blazing Star, Blazing Star, Wild Lupine, Wild Bergamot, Dotted Mint, Prairie Cinquefoil, Yellow Coneflower, Black-Eyed Susan, Stiff Goldenrod, Showy Goldenrod, Spiderwort, Hoary Vervain

Grasses, Sedges & Rushes: Side Oats Grama, Prairie Brome, Copper-Shouldered Oval Sedge, Canada Wild Rye, June Grass, Little Bluestem, Prairie Dropseed

Lake Michigan Day

"Celebrating Lake Michigan!"



Meeting Registration

Cost: \$20, includes a luncheon, program materials and transportation to field sites.

Pre-Registration is required by July 31.

To register and pay by check or credit card, go to the LMS website below.

Checks should be made payable to LNRP. Please mail your check to LNRP to:
PO Box 358, Cleveland, WI
53015-0358

To Register: Call Sherrill at (920) 412-1920 or email: sherrill@lnrp.org.

Lunch will be sandwiches with vegetarian options.



Friday, August 14, 2015

8:30 a.m.(registration) – 4:30 p.m.

Table Display Set-up at 8:00 a.m.

Program Begins at 9:30 a.m.

**UW-Manitowoc's Lakeshore Water Institute
County Board Room
705 Viebahn Street
Manitowoc, WI 54220**

Lake Michigan Day celebrates and showcases opportunities for continued restoration and protection of Lake Michigan, and the broader Great Lakes basin, and highlight the ongoing challenges facing the lakes. This year's event will feature opportunities for Wisconsin's agriculture with a panel of experts involved with farmer-led initiatives to reduce phosphorus pollution. The day provides a venue for decision-makers and community leaders to engage with a broad array of stakeholders. For directions to UW-Manitowoc, please see link below:

<http://www.manitowoc.uwc.edu/about/overview/campus-map>

The Wonder of It All: Water Quality in Southern Manitowoc County Streams: Students, Data, Issues, and Solutions

Tuesday, October 6th from 6:00-7:30pm

Location: Nature Center

Cost: FREE - donations are appreciated

The Lakeshore Water institute, a collaboration between UW-Manitowoc and Lakeshore Natural Resource Partnership, has been collecting water quality data on streams in southern Manitowoc County over the past five years. During their talk, Rick Hein and Rebecca Abler will discuss the sampling completed by their UW-Manitowoc students, data collected, results, and potential impacts on area beaches and Lake Michigan.

They will also identify potential avenues for action to improve water quality and discuss the value of having students working on real, hands-on scientific research in the community. Discussion and question session to follow. **Registration required by Friday, October 2nd.** Sponsored by the Dominion Foundation and co-hosted by Woodland Dunes and the Friends of the Twin Rivers.

Putting Volunteers First



Monday, November 9, 2015
6:00-8:00 p.m.
Wisconsin Maritime Museum



Mary Claire Klein, EdD, chair of both the Communication program and the Leadership program at Marian University of Fond du Lac, will present a **free workshop** for the regional networks and friends groups of LNRP.

We will examine:

- ~ The need to **build a sense of community.**
- ~ The various ways leaders of volunteers can provide the best possible experience for their team.
 - ~ Make best use of individual skills, and appeal to the volunteers sense of generosity.
- ~ The many ways to insure that the team of volunteers have a great experience and want to continue their involvement.



Sign up today! Contact:
jenn@lnrp.org



Wetlands Matter

How you can help care for Wisconsin's wetlands



Saturday, January 30, at the Wisconsin Maritime Museum

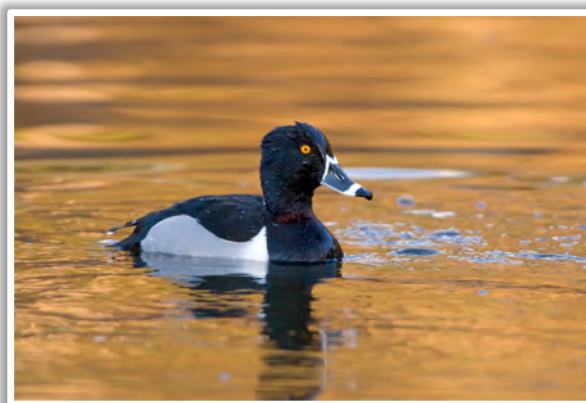
**1:00-3:00 p.m. Riverview Room
75 Maritime Dr. Manitowoc 54220**

Do you own wetlands? Are your wetlands healthy? Wisconsin Wetlands Association works with private individuals and families who own wetlands and who are interested in doing more to maintain and improve the health of their wetlands.

This presentation will provide practical information about:

- ❖ How to identify if you have wetlands on your property
- ❖ What different wetland types are found in Wisconsin
- ❖ Actions you can take to maintain and improve your wetland's health

You'll also hear about local opportunities for learning and support from Wisconsin Wetlands Association and our partners. This presentation will draw on information in *My Healthy Wetland: A Handbook for Wetland Owners* (eastern edition), which was published in 2014 and will be available at the session. Contact jenn@lnrp.org. There is \$5 program cost which includes beverages (but free if member of Wisconsin Maritime Museum). This is part of our Saturday Learning Series.



Hosted by

