



North American Hydro Holdings, Inc. — Plant Operations:
116 State Street, P.O. Box 167, Neenah, WI 54956 USA
Tel: 820-293-4628 Fax: 820-293-8087 Email: nah@nahydro.com Web: www.nahydro.com

Engineering & Manufacturing:
1323 B Everest Avenue, Schofield, WI 54478 USA
Tel: 715-369-0208 Fax: 715-369-1049 Email: schofield@nahydro.com Web: www.nahydro.com

ORIGINAL

December 29, 2003

FILED
OFFICE OF THE
SECRETARY
2004 JAN -5 P 4:05
FEDERAL ENERGY
REGULATORY COMMISSION

The Secretary
Federal Energy Regulatory Commission
888 First Street, NE
Washington, DC 20426

-031

**Re: Flambeau Lower, Project No. 2421, Flambeau Hydro LLC
Article 410, Purple Loosetrife Inventory**

Dear Secretary:

Please find enclosed an original and 8 copies of the Flambeau Lower, Project No. 2421 Purple Loosetrife Inventory for 2003. On November 25, 2003, copies of the inventory were sent to the Wisconsin Department of Natural Resources (WIDNR) and the US Fish & Wildlife Service (USFWS) for comment. On December 3, 2003, a letter was received from the WIDNR stating that no changes or additions were necessary. That letter is included with this filing. No comments were received from the USFWS.

If you have any questions regarding this submission, please contact Mr. Richard Loeffler at 920-293-4628 ext. 18.

Sincerely,
NORTH AMERICAN HYDRO, INC.

FOR Charles Alsberg
Executive Vice President

Cc: FERC - CRO
Encl.: 1 original & 8 copies

03-12-29 RAI. FLLW 2003 loosetrife survey to FERC

**Flambeau Lower Project Purple Loosestrife Inventory
August 15, 2003
FERC Project #2421 Article 410**

**Flambeau Hydro, L.L.C.
116 State St.
Neshkoro, WI 54960**

Purple Loosestrife

On August 15, 2003, Flambeau Hydro, L.L.C. (FHLLC) performed an inventory of purple loosestrife plants at the Flambeau Lower Project in Price County, Wisconsin. The method of inventory as approved and modified by Federal Energy Regulatory Commission (FERC) Order of June 18, 2003 was defined as follows:

While Purple Loosestrife is blooming in mid July to early August, the inventory should be conducted using a boat to survey the impoundment above the dam within the Project Boundary and on foot or by boat below the dam within the Project Boundary. County wetland maps may be used to determine other areas where Purple Loosestrife could be found on lands owned by FHLLC within the Project Boundary. Lands owned by FHLLC within the Project Boundary will be surveyed on foot. A pair of binoculars should be used to search for the purple flowered spikes of the plant. When plants are located, the person(s) inventorying should get close enough to make a positive identification without disturbing the plants or the immediate area around the plants as this could cause them to spread. A GPS receiver will be used to establish a GPS coordinate for the location of the plants. If it is not possible to get close enough to establish an accurate location, an approximate location will be established with reference to an established GPS coordinate. The plants should be inventoried by marking and numbering the location on a Project map along with notes approximating size of plants, stand area, percent cover, stem density, plant density, and location with reference to established GPS coordinates. Photos and/or videotape will be taken of the largest occurrences.

Example:

#1 6' tall plants; 4' X 20'; 30% cover; 4 - 5 stems per plant; 4 plants; on shoreline N45° 56.183' W90° 26.748'; no photo

#2 5' - 7' tall plants; 10' X 10'; 25% cover; 4 - 5 stems per plant; 10 plants; in marsh ~50 feet bearing 25° from N45° 56.256' W90° 26.710'; photo No. 1

The area to be inventoried shall be the shoreline of the impoundment to elevation 1468 feet NGVD and lands owned by FHLLC within the Project

Boundary as indicated on the Project Map 1, dated November 1991, included in Exhibit G of Flambeau Paper Corp. Application For A Subsequent License for the Lower Hydroelectric Project FERC Project #2421.

General Observations:

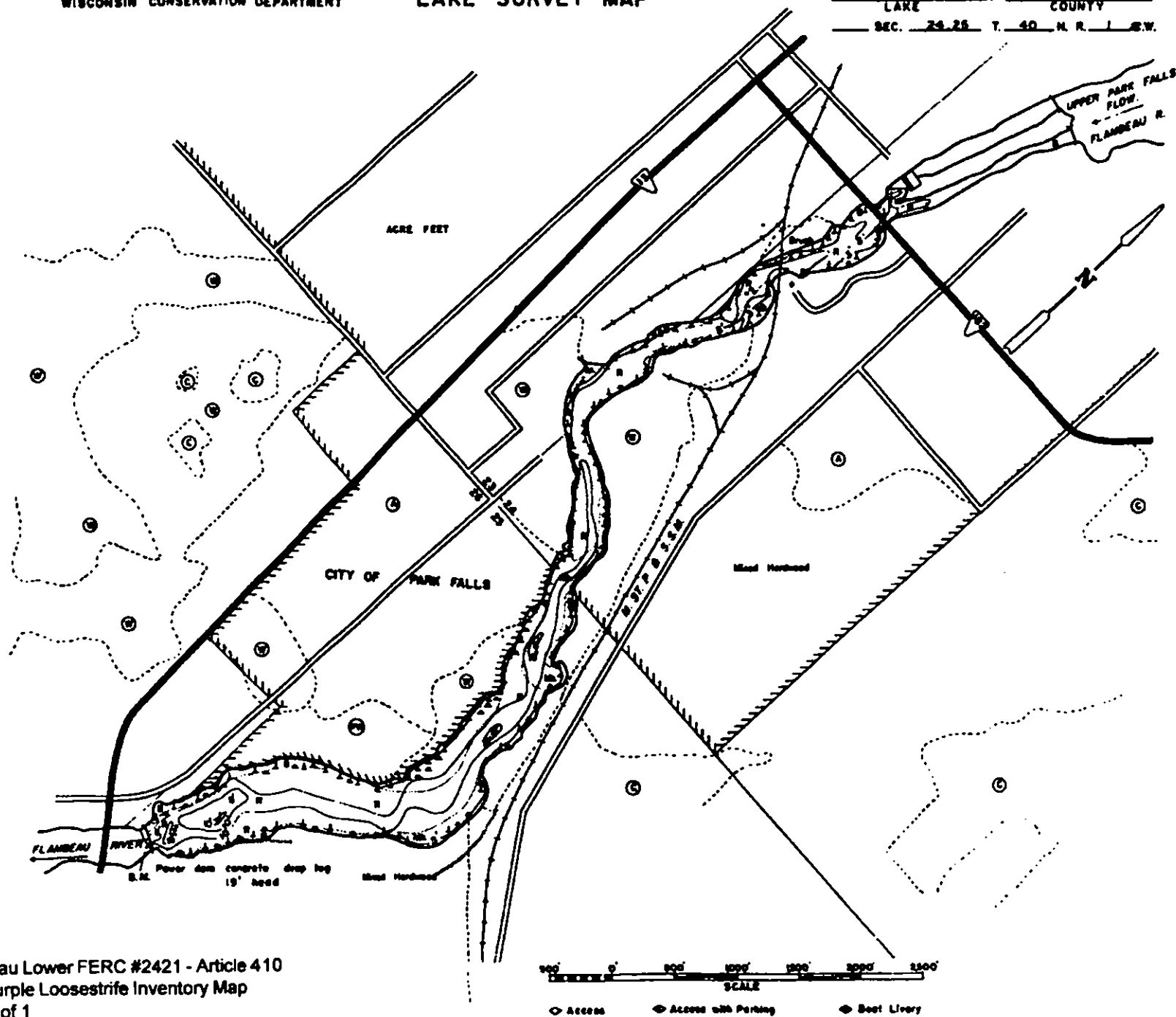
The Flambeau Lower Project Boundary was divided into three different areas; *the impoundment* (from HWY 182 bridge in Park Falls to the dam), *FHLLC owned property within the project boundary* (FHLLC owned property adjacent to the dam and powerhouse), and *the tailrace* (from the dam and powerhouse to the HWY 13 bridge).

The tailrace was surveyed by boat and no purple loosestrife plants were observed.

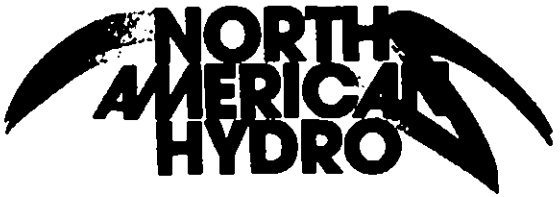
The FHLLC owned property within the project boundary was surveyed on foot and no purple loosestrife plants were observed.

The impoundment was surveyed by boat and no purple loosestrife plants were observed.

During the inventory, an 8mm camcorder was used to document new occurrences of purple loosestrife as noted in the survey comments at the end of this report.



Flambeau Lower FERC #2421 - Article 410
 2002 Purple Loosestrife Inventory Map
 Page 1 of 1
 02-10-23 RAL Flambeau Lower - Purple Loosestrife Map 2002.p85



North American Hydro Holdings, Inc. — Plant Operations:
118 State Street, P.O. Box 187, Nashboro, VT 05690 USA
Tel 820-293-4828 Fax 820-293-8087 Email nah@nahydro.com Web www.nahydro.com
Engineering & Manufacturing:
1328 E Everest Avenue, Schofield, WI 54478 USA
Tel 715-858-0200 Fax 715-358-1048 Email schofield@nahydro.com Web www.nahydro.com

November 25, 2003

Mr. Jeffrey Scheirer
Northern Region FERC Manager
Wisconsin Department of Natural Resources
875 South 4th Avenue
Park Falls, WI 54552

Ms. Janet Smith
Fish & Wildlife Biologist
U.S. Fish and Wildlife Service
2661 Scott Tower Drive
New Franken, WI 54229

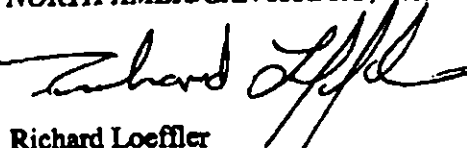
**Re: *Flambeau Lower Project, No. 2421, Flambeau Hydro, L.L.C.
Article 410, Purple Loosetrife Inventory***

Dear Mr. Scheirer and Ms. Smith:

Attached is a copy of our "Purple Loosetrife Inventory" for 2003. This annual report has been prepared to comply with Article 410 of the project's federal hydropower license.

We invite you to review and comment, but we respectfully request that any written response be provided to us within thirty (30) days from the date of this letter.

Please contact me at 920-293-4628 extension 18 if you wish discussion or have any questions. Your cooperation is appreciated.

Sincerely,
NORTH AMERICAN HYDRO, Inc.

Richard Loeffler

Attachment



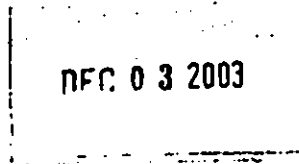
State of Wisconsin \ DEPARTMENT OF NATURAL RESOURCES

Jim Doyle, Governor
Scott Hassett, Secretary

875 S. Fourth Ave.
Park Falls, WI 54552
Telephone 715-762-3204
FAX 715-762-4348

December 1, 2003

Rick Loeffler
Flambeau Hydro, L.L.C.
116 State St., P.O. Box 167
Neshkoro, WI 54960



Subject: Purple Loosestrife Inventory--2003

Dear Mr. Loeffler:

The results from Flambeau Hydro's purple loosestrife monitoring at the Upper, Lower, Pixley, and Crowley hydroelectric projects are fine. No changes or additions are necessary, so feel free to file the reports with the Federal Energy Regulatory Commission. I will retain these copies for the Department's records. Unless you make subsequent changes before submitting the reports to the FERC, there is no need to provide duplicates to the Department. Instead, simply send a copy of the transmittal letter to me at the address on this letterhead.

The Department will provide informational brochures and signs about purple loosestrife for you to post at the recreational sites of the four projects. Those materials should be available before next summer.

We appreciate your efforts in monitoring and controlling the spread of purple loosestrife in the upper Flambeau River basin. Please give me a call when you schedule the surveys next summer. I always welcome an opportunity to be on the water.

Sincerely,

Jeff Scheirer
Northern Region FERC Project Manager

Cc: Larry Thompson, USFWS

