

North American Hydro Holdings, Inc.

116 State Street, P.O. Box 167, Neshkoro, WI 54960 USA

Tel 920-293-4628 Fax 920-293-8087 Email nah@nahydro.com Web www.nahydro.com

December 08, 2008

The Secretary
Federal Energy Regulatory Commission
888 First Street, NE
Washington, DC 20426

**Re: *Clam River Project, No. 9185, Flambeau Hydro, LLC
Article 401(b)(M), Purple Loosestrife Inventory***

Dear Secretary:

On behalf of Flambeau Hydro, LLC, and in accordance with the Purple Loosestrife Monitoring Plan per license article named above, North American Hydro Holdings, Inc. submits the annual Purple Loosestrife Inventory for 2008 for the above named project. Copies of the inventory have been sent to the Wisconsin Department of Natural Resources and the US Fish & Wildlife Service and no comments have been received to date.

If you have any questions regarding this submission, please contact Mr. Richard Loeffler at 920-293-4628.

Sincerely,

NORTH AMERICAN HYDRO HOLDINGS, INC.

A handwritten signature in cursive script, appearing to read "Charles Alsberg".

FOR

Charles Alsberg
Executive Vice President

Cc: FERC – CRO

08-10-10 CTM CLRV 2008 loosestrife survey to FERC.doc

**Clam River Project Purple Loosestrife Inventory
July 30, 2008
FERC Project #9185 Article 401(b)(M)**

**Flambeau Hydro, LLC
116 State St.
Neshkoro, WI 54960**

Purple Loosestrife

On July 30, 2008, Flambeau Hydro, LLC (FHLLC) performed an inventory of purple loosestrife plants at the Clam River Project in Burnett County, Wisconsin. The method of inventory was defined as follows:

While Purple Loosestrife is blooming in August, the inventory should be conducted using a boat to survey the impoundment above the dam within the Project Boundary and on foot below the dam within the Project Boundary. County wetland maps may be used to determine other areas where Purple Loosestrife could be found on lands owned by FHLLC within the Project Boundary. Lands owned by FHLLC within the Project Boundary will be surveyed on foot. A pair of binoculars should be used to search for the purple flowered spikes of the plant. When plants are located, the person(s) inventorying should get close enough to make a positive identification without disturbing the plants or the immediate area around the plants as this could cause them to spread. A GPS receiver will be used to establish a GPS coordinate for the location of the plants. If it is not possible to get close enough to establish an accurate location, an approximate location will be established with reference to an established GPS coordinate. The plants should be inventoried by marking and numbering the location on a Project map along with notes approximating size of plants, stand area, stem density, plant density, and location with reference to established GPS coordinates. Photos and/or videotape may be taken of the largest occurrences.

Example:

GPS point CLRVPL001; Location Lat N45° 54.493' Lon W92° 31.128';
Plant height 2' – 6'; Density ~5' X 50' ~40 plants single & multi-stem;
Comments Insect damage observed. Seed heads removed. Photos. No
Video.

The area to be inventoried shall be the shoreline of the impoundment and lands owned by FHLLC within the Project Boundary as indicated on the Project Boundary Map G-1, as filed with the Federal Energy Regulatory Commission.

General Observations:

The Clam River Project Boundary was divided into four different areas; *the impoundment* (from approximately 3.1 miles upstream of the Clam River powerhouse downstream to the Clam River powerhouse), *FHLLC owned property within the project boundary* (FHLLC owned property adjacent to the dam and powerhouse), *the tailrace* (from the powerhouse to a point approximately 900 feet downstream), and the *by-pass reach* (from the spillway to point approximately 800 feet downstream).

The by-pass reach was surveyed on foot and no purple loosestrife plants were observed.

The tailrace was surveyed on foot and no purple loosestrife plants were observed.

The FHLLC owned property within the project boundary was surveyed on foot and no purple loosestrife plants were observed.

The impoundment was surveyed by boat and five areas of purple loosestrife were found within the project boundary. Of the five areas, one site was new in 2008 and one occurrence from 2007 could not be located. All occurrences were found on lands not owned by FHLLC.

Sighting #1 was first observed in 2007. It is located upstream of the project boundary and this occurrence could not be located in 2008.

Sighting #2 is inside the project boundary and was first observed in 2007. No plants were observed in 2008.

Sighting #3 is a large ~11 acre site in the higher ground and bogs within wild rice beds of the upper end of the impoundment that was first observed in 2007. In 2008, the survey crew could find no change to the size of this occurrence.

Sighting #4 was first observed in 2007. In 2008 there were ~4 plants visible. This occurrence did not change from previous year.

Sighting #5 was observed in 2007 and 2008. All plants were pulled and destroyed in 2007 and 2008.

Sighting #6 was first discovered in 2007. In 2008 five plants were found at this site. No treatment was given due to its inaccessible location. There was no change in this occurrence from 2007.

Sighting #7 is a new occurrence in 2008. This ~5'x 5' infected area could not be reached for close observation and treatment due to its location in a low lying area.

The only plants pulled were at the East End Boat Landing due to terrain constraints.

No insect damage was noted at any of the occurrences at the project.

These purple loosestrife plants were inventoried and have been noted on the survey sheet(s) and map(s) at the end of this report. No other occurrences of purple loosestrife were observed.

During the inventory, a digital camera and/or video camera was used to document occurrences of purple loosestrife as noted in the survey comments at the end of this report.

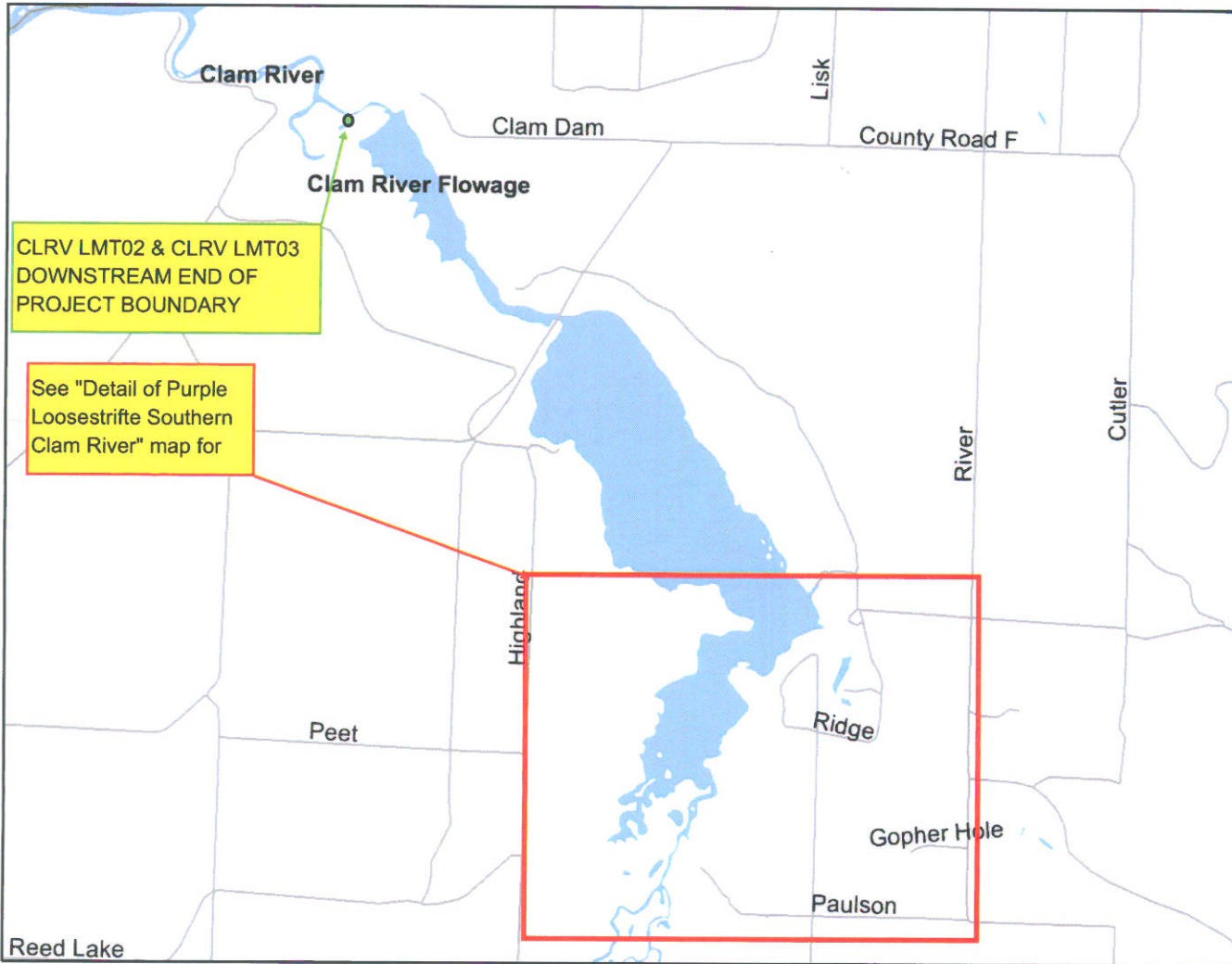
Purple Loosestrife Survey

Project: Clam River #9185
Date: 7/30/2008
Crew: GR & CTM

Datum: WGS 84
Page: 1 of 1

Sighting #	GPS point	Latitude	Longitude	Plant Height	Stand Area	Comments
1	CLRVPL001	N45°54.493'	W92°31.128'	N/A	N/A	Located ~1,500' upstream from the upstream end of the Project Boundary. First discovered in 2007. In 2008 this occurrence could not be located. All plants pulled in 2007. Video from 2007
2	CLRVPL002	N45°54.812'	W92°31.014'	N/A	N/A	Located ~150' W of GPS point. First discovered in 2007. No video or photos in 2007. No treatment in 2007. In 2008 this occurrence could not be located.
3	CLRVPL003 CLRVPL004	N45°54.998' N45°55.240'	W92°30.949' W92°31.028'	1' - 7'	~11 acres >500-plants Multi-stem & Single-stem	Located on higher ground and bogs within wild rice on either side of the channel with the GPS points as end-points. First discovered in 2007. In 2008, there was no change in the size of the affected area and no beetle damage on the plants we observed. No treatment in 2007 & 2008. No video or photos in 2008 This occurrence was partially recorded on video in 2007.
4	CLRVPL005	N45°55.284'	W92°30.756'	4' - 6'	~15' x 15' ~4-plants Multi-stem	Located ~100' S of GPS point. First discovered in 2007. In 2008, no changes were observed. No insect damage observed and old cane was present. No treatment in 2007 & 2008. This occurrence photographed in 2007. No photos or video in 2008
5	CLRVPL006	N45°55.529'	W92°30.505'	3' - 5'	6-plants Multi-stem	First discovered in 2007. In 2008, 6 plants were found. No insect damage observed. No old cane present. All plants were pulled with the root mass 2007 & 2008. No video or photos in 2007 and 2008.
6	CLRVPL007	N45°55.541'	W92°30.606'	3' - 6'	~15' x 6' ~5-plants Multi-stem	Location estimated. First discovered in 2007. In 2008, no changes were observed - no insect damage and old cane present. No treatment in 2007 & 2008. No video or photos in 2007 & 2008.
7	CLRVPL008	N45°55.169'	W92°30.875'	3' - 6'	~5' x 5' Multi-stem	Located ~450' E-SE of GPS point. First discovered in 2008. Could not get close enough to determine beetle damage. No old cane observed. No treatment in 2008. No video or photo's in 2008

2008 Clam River Purple Loosestrife Locations



CLRV LMT02 & CLRV LMT03
DOWNSTREAM END OF
PROJECT BOUNDARY

See "Detail of Purple
Loosestrife Southern
Clam River" map for

Legend

- County Boundaries
- ✂ Railroads
- Major Highways
 - Interstate
 - US Highway
 - State Highway
 - Local Roads
- Civil Towns
- Civil Town
- 24K Open Water
- Cities and Villages
 - Village
 - City

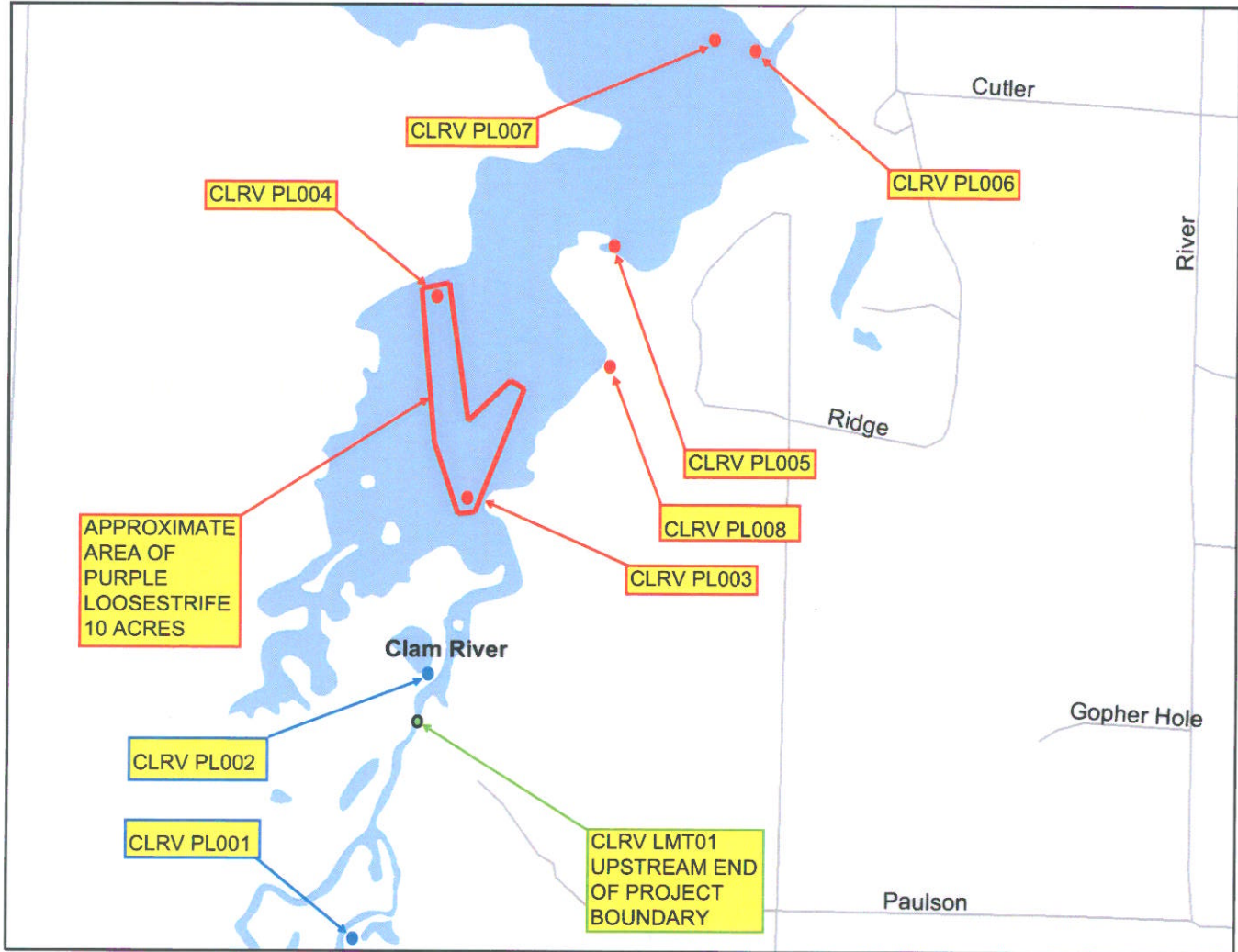
- Purple Loosestrife Observed in 2008
- Purple Loosestrife Observed in Previous Years and not in 2008

Scale: 1:35,000



This map is a user generated static output from an Internet mapping site and is for general reference only. Data layers that appear on this map may or may not be accurate, current, or otherwise reliable. THIS MAP IS NOT TO BE USED FOR NAVIGATION.

Detail of Purple Loosestrife Southern Clam River



Legend

- County Boundaries
- ✕ Railroads
- Major Highways
 - Interstate
 - US Highway
 - State Highway
 - Local Roads
- Civil Towns
- Civil Town
- 24K Open Water
- Cities and Villages
 - Village
 - City

- Purple Loosestrife Observed in 2008
- Purple Loosestrife Observed in Previous Years and not in 2008

Scale: 1:13,000



This map is a user generated static output from an Internet mapping site and is for general reference only. Data layers that appear on this map may or may not be accurate, current, or otherwise reliable. THIS MAP IS NOT TO BE USED FOR NAVIGATION.



North American Hydro Holdings, Inc. — Plant Operations:

116 State Street, P.O. Box 167, Neshkoro, WI 54960 USA
Tel 920-293-4628 Fax 920-293-8087 Email nah@nahydro.com Web www.nahydro.com

Engineering & Manufacturing:

8310 Technology Drive, Weston, WI 54476 USA
Tel 715-359-0209 Fax 715-359-1049 Email schofield@nahydro.com Web www.nahydro.com

October 27, 2008

Mr. Jeffrey Scheirer
Northern Region FERC Manager
Wisconsin Department of Natural Resources
875 South 4th Avenue
Park Falls, WI 54552

Ms. Louise Clemency
Field Supervisor
U.S. Fish and Wildlife Service
2661 Scott Tower Drive
New Franken, WI 54229

**Re: *Clam River Project, No. 9185, Flambeau Hydro, LLC
Article 401(b)(M), Purple Loosestrife Inventory***

Dear Mr. Scheirer and Ms. Clemency:

Attached is a copy of the Flambeau Hydro, LLC "Purple Loosestrife Inventory" for 2008. This annual report has been prepared to comply with the federal hydropower license of the project and article named above and is being filed with the Federal Energy Regulatory Commission.

Please contact me at 920-293-4628 if you wish to discuss or have any questions.

Sincerely,
NORTH AMERICAN HYDRO HOLDINGS, INC.

Richard Loeffler

A handwritten signature in black ink, appearing to read "Richard Loeffler", is written over the printed name.

Attachment

File: 08-10-10 CTM CLRV 2008 Loosestrife Survey to Agencies.doc

Document Content(s)

081210CLRVRPT2008.PDF.....1-8