



ORIGINAL

November 26, 2014

Ms. Kimberly D. Bose, Secretary
Office of the Secretary
Federal Energy Regulatory Commission
888 First Street, NE
Washington, DC 20426

RE: Middle Appleton Dam FERC Project P-7264
Neenah Paper Inc. and NEW Hydro, LLC
Article 405 – 2014 Invasive Species Monitoring Report

FILED
SECRETARY OF THE
COMMISSION
2014 DEC -2 A 11:39
FEDERAL ENERGY
REGULATORY COMMISSION

Dear Secretary;

On behalf of Neenah Paper Inc. and NEW Hydro, LLC (Licensee), Eagle Creek Renewable Energy (ECRE) hereby submits the 2014 Invasive Species Monitoring Report in accordance with Article 405 of the Project License. Please find (1) original and (7) copies of the 2014 report including Agencies comments attached.

In an effort to address the agency comments received by email on November 18, 2014 the licensee shall do the following:

- Provide additional details regarding the methodology within future reports. It should be noted that the methodology used in 2014 monitoring is consistent with the 2006 Invasive Species Monitoring Plan and past monitoring efforts.
- Attempt to select the most favorable conditions to conduct future monitoring work. Please note, that during the summer months a naturally occurring algae bloom can affect the water clarity and visibility significantly. If favorable conditions do not exist and visibility remains poor for a period of time. The licensee shall take the additional measure of raking in locations where EWM was previously noted. This will hopefully provide some useful information related to the distribution of EWM and Zebra Mussels.
- The Licensee will continue their monitoring program every other year and work with the DNR to become familiar with their internal data recording process and as a courtesy we shall report the observances of AIS species that may be beyond the scope of the License.

The next monitoring and reporting period will be in 2016. Should you have any questions regarding this submittal, please contact Mr. Jereme Klassy with ECRE at 920-293-4628 ext. 322 or email at Jereme.klassy@eaglecreekre.com.

Sincerely,
Eagle Creek Renewable Energy
Agent for Licensee(s)

for


Mr. Scott Klabunde
Sen. VP of Operations

Attached: Middle Appleton 2014 Invasive Species Monitoring Report

cc: Jon Rom, Neenah Paper Inc.
Cheryl Laatsch, WDNR
Nick Utrup, US FWS

File: 14-11-26_LC_ECRE_APLT_Final 2014 Invasive Species Monitoring Rept.

FINAL
Invasive Species

2014 Monitoring Report
(Per License Article 405)

For the

Middle Appleton Dam Hydroelectric Project
FERC P-7264 NATDAM ID WI00166

Lower Fox River
Outagamie County, Wisconsin



Submitted by:

Eagle Creek Renewable Energy
116 North State Street – P.O. Box 167
Neshkoro, WI 54960-0167

November 2014

Report Prepared
For
Neenah Paper, Inc. and NEW Hydro, LLC

Table of Contents

	Page
I. Project Area Description	3
II. Identification of Invasive Species	4
A. Purple Loosestrife	4
B. Eurasian Water-Milfoil	4
C. Zebra Mussels	4
III. Survey Results	5
Figure 1: Survey boundary Map.....	6
Appendix A: Agency Correspondence.....	7

I. Project Area Description

The Middle Appleton Dam Hydroelectric Project, Federal Energy Regulatory Commission (FERC) Project #7264 is located on the Lower Fox River in the city of Appleton, Wisconsin within its corporate limits. The city of Appleton is located in east – central Wisconsin and specifically in south – central Outagamie County. The Lower Fox River empties into the southern end of Green Bay approximately 31 miles downstream from the project. Green Bay is a bay located along the northwest part of Lake Michigan.

The Lower Fox River has thirteen (13) dams spanning its shores, of which, the Appleton Dam is one. The impoundment of the project is 35.5 acres in size. It extends south – southwest upstream for approximately one half (.5) miles where the next dam is located between Appleton Lock # 2 and # 3. Downstream, the next dam is located approximately three quarters (.75) of a mile away. In association with the thirteen (13) dams are eighteen (18) lock structures.

The project is located within an urbanized and heavily industrialized area along the Lower Fox River known as the “flats”. Plant growth is sparse and confined to only some of the shoreline area along this stretch of river.

The 2012 survey was performed in compliance with article 405. Article 405 of the License requires annual monitoring for Purple Loosestrife, Eurasian Water-Milfoil, and Zebra Mussels thru 2008 and then alternately after 2008. The next required monitoring will be performed in 2016.

II. Identification of Invasive Species

A. Purple Loosestrife

Purple loosestrife (*Lythrum salicaria*) is a perennial plant in the loosestrife family, with a square, woody stem, opposite or whorled leaves, and grows to heights of 3-9 feet. It has a bright vibrant purple bloom that makes it easily seen and identified in late summer. Purple loosestrife easily adapts to natural and as well as disturbed wetlands and tolerates changes in soil moisture and temperature. It is found in wet or moist areas such as riverbanks, streams, and marshes. Purple Loosestrife is highly invasive and forms dense stands as it establishes itself and expands. It competes and eventually replaces native grasses, sedges, and other flowering plants that provide a higher quality source of nutrition and habitat for wildlife. The seeds can easily be transported by flood waters and invade areas downstream.

B. Eurasian Water-Milfoil

Eurasian Water-Milfoil (*Myriophyllum spicatum*) is a highly invasive aquatic plant that out-competes and replaces native aquatic plants, including native water-milfoils such as Northern Water-Milfoil (*Myriophyllum sibiricum*), one of seven (7) found in Wisconsin. It forms dense mats of vegetation near the surface which impede swimming, entangle themselves on boat propellers, and by eventually replacing other native species threaten the integrity of otherwise diverse aquatic communities. It has long spaghetti like stems, limp, feather-like leaves arranged whorls (3-5), and 12-21 leaflet pairs per leaf. The plant was accidentally introduced to North America from Europe and is not found in the majority of inland lakes in Wisconsin. It reproduces by producing shoot fragments and runners rather than by seeds. However, the fragments and runners can be spread and infest other areas by water currents, transported by watercraft, and by residual plant material left attached to boat trailers.

C. Zebra Mussels

The Zebra Mussel (*Dreissena polymorpha*) is small and non-native to the North America. It was originally found in Russia. The Zebra Mussel was found to have been transported to North America in 1988 in the ballast water of a transatlantic freighter. Since 1988 and up to the present, Zebra Mussels have spread from Lake St. Clair to all five of the Great Lakes, and into the Mississippi, Tennessee, Hudson, Colorado, St. Lawrence, Cumberland, Missouri, Arkansas, Red, and Ohio River Basins. Zebra Mussels are relatively small, usually about the size of a fingernail. However, adults can range in size from 0.25 to nearly 2 inches in length with a d-shaped shell. They get their name from a striped pattern commonly seen on their shells. However, not all contain the striped pattern and may need closer examination to identify. Many of Wisconsin's inland waters are now infested with Zebra Mussels. It is a prolific invasive that deprives native fish and other aquatic life of food and habitat as well as being a very costly to boaters, the shipping industry, and the maintenance of water intake and water supply structures.

III. Survey Results

The Middle Appleton Dam Project, (FERC # 7264) was surveyed on August 16, 2014 for Purple Loosestrife and Eurasian Water Milfoil. River conditions slightly above normal levels. Weather conditions were hazy and warm with a slight wind. The water clarity was “poor” (approximately one foot) due to algae bloom and swift moving water.

At the time of the survey Purple Loosestrife was easily identifiable along local highway medians and EWM was readily apparent in other community lakes.

Most lands and waters within the project boundaries were assessable during the survey. The majority of the survey was conducted by kayak, with some shoreline portions of the survey conducted on foot.

The length of the survey was approximately 3.5 hours. The order of the survey from beginning to end was as follows:

1. NEW Power Plant
2. The shores upstream to the train trestle and then to the southern-most project boundary at the upper dam
3. Traveling north on east shoreline between the old Oneida Bridge and northern-most project boundary
4. Traveling south on west shoreline to the old Oneida Bridge
5. Power Canal

Purple Loosestrife

The heavily developed shore has left little habitat for vegetation to establish itself and grow. No Purple Loosestrife was observed during the survey.

Eurasian Water Milfoil (EWM)

No mats or individual plants were observed during the survey, however some floating fragments were observed in the upper impoundment while kayaking and some additional fragments were observed while walking the south river edge below the dam.

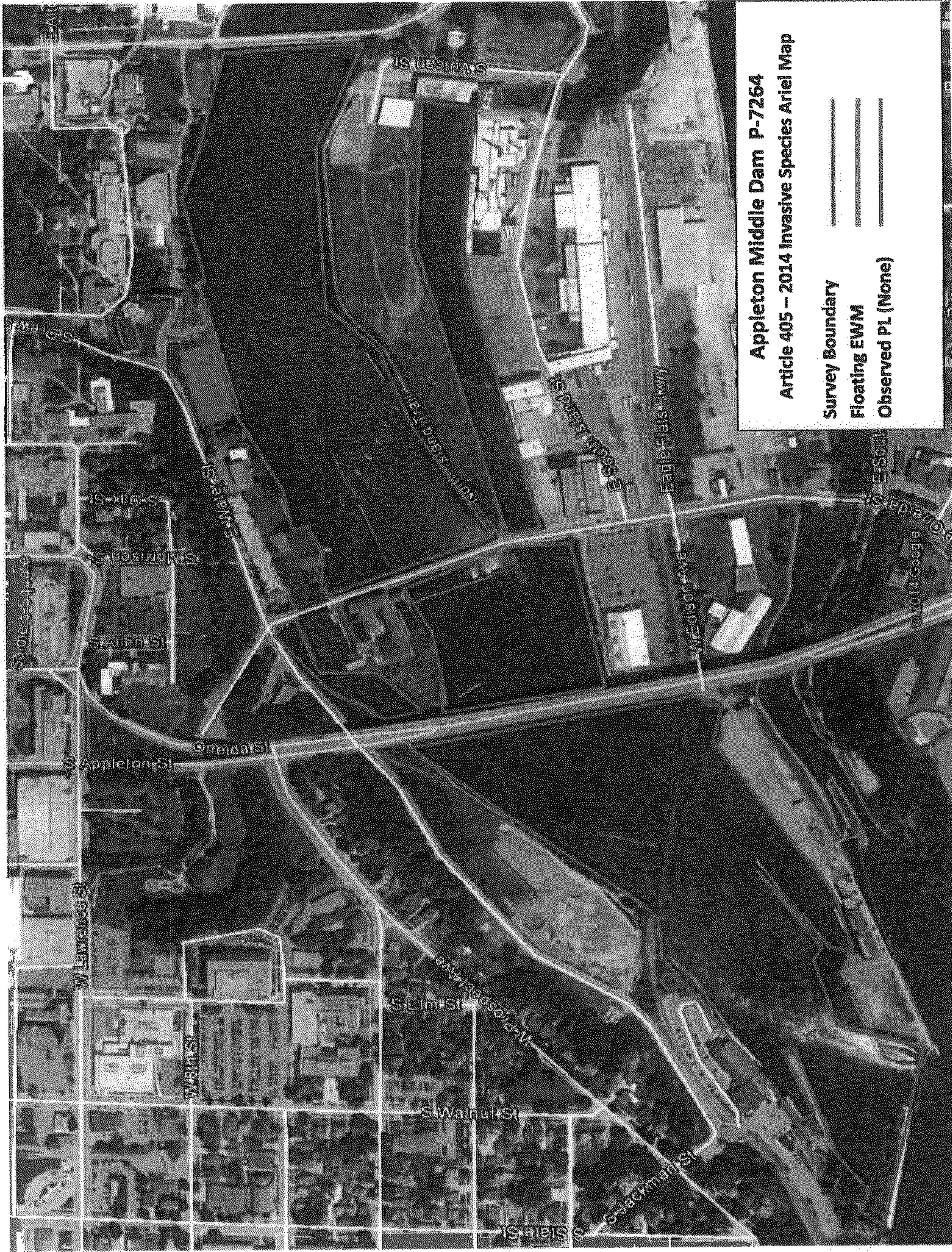
Zebra Mussels

Zebra Mussels have been identified within the project boundary. However, no Zebra Mussels were observed during the 2014 survey.

FIGURE 1

SURVEY BOUNDARY MAP





Appleton Middle Dam P-7264
Article 405 – 2014 Invasive Species Ariel Map

Survey Boundary	—
Floating EWM	—
Observed PL (None)	—

W Lawrence St
S Appleton St
S State St
S Walnut St
S Elm St
S Oak St
S Maple St
S Birch St
S Cedar St
S Pine St
S Spruce St
S Fir St
S Hemlock St
S Douglas St
S Redwood St
S Cypress St
S Juniper St
S Sycamore St
S Poplar St
S Willow St
S Cottonwood St
S Ash St
S Hickory St
S Chestnut St
S Walnut St
S Pecan St
S Almond St
S Peach St
S Cherry St
S Plum St
S Apple St
S Pear St
S Quince St
S Grape St
S Raisin St
S Fig St
S Olive St
S Lemon St
S Lime St
S Orange St
S Tangerine St
S Citrus St
S Mandarin St
S Tangerine St
S Grapefruit St
S Lemon-Lime St
S Lime-Lemon St
S Orange-Lime St
S Tangerine-Lime St
S Citrus-Lime St
S Mandarin-Lime St
S Tangerine-Lime St
S Grapefruit-Lime St
S Lemon-Lime St
S Lime-Lemon St
S Orange-Lime St
S Tangerine-Lime St
S Citrus-Lime St
S Mandarin-Lime St

W Lawrence St
S Appleton St
S State St
S Walnut St
S Elm St
S Oak St
S Maple St
S Birch St
S Cedar St
S Pine St
S Spruce St
S Fir St
S Hemlock St
S Douglas St
S Redwood St
S Cypress St
S Juniper St
S Sycamore St
S Poplar St
S Willow St
S Cottonwood St
S Ash St
S Hickory St
S Chestnut St
S Walnut St
S Pecan St
S Almond St
S Peach St
S Cherry St
S Plum St
S Apple St
S Pear St
S Quince St
S Grape St
S Raisin St
S Fig St
S Olive St
S Lemon St
S Lime St
S Orange St
S Tangerine St
S Citrus St
S Mandarin St
S Tangerine St
S Grapefruit St
S Lemon-Lime St
S Lime-Lemon St
S Orange-Lime St
S Tangerine-Lime St
S Citrus-Lime St
S Mandarin-Lime St

W Lawrence St
S Appleton St
S State St
S Walnut St
S Elm St
S Oak St
S Maple St
S Birch St
S Cedar St
S Pine St
S Spruce St
S Fir St
S Hemlock St
S Douglas St
S Redwood St
S Cypress St
S Juniper St
S Sycamore St
S Poplar St
S Willow St
S Cottonwood St
S Ash St
S Hickory St
S Chestnut St
S Walnut St
S Pecan St
S Almond St
S Peach St
S Cherry St
S Plum St
S Apple St
S Pear St
S Quince St
S Grape St
S Raisin St
S Fig St
S Olive St
S Lemon St
S Lime St
S Orange St
S Tangerine St
S Citrus St
S Mandarin St
S Tangerine St
S Grapefruit St
S Lemon-Lime St
S Lime-Lemon St
S Orange-Lime St
S Tangerine-Lime St
S Citrus-Lime St
S Mandarin-Lime St

W Lawrence St
S Appleton St
S State St
S Walnut St
S Elm St
S Oak St
S Maple St
S Birch St
S Cedar St
S Pine St
S Spruce St
S Fir St
S Hemlock St
S Douglas St
S Redwood St
S Cypress St
S Juniper St
S Sycamore St
S Poplar St
S Willow St
S Cottonwood St
S Ash St
S Hickory St
S Chestnut St
S Walnut St
S Pecan St
S Almond St
S Peach St
S Cherry St
S Plum St
S Apple St
S Pear St
S Quince St
S Grape St
S Raisin St
S Fig St
S Olive St
S Lemon St
S Lime St
S Orange St
S Tangerine St
S Citrus St
S Mandarin St
S Tangerine St
S Grapefruit St
S Lemon-Lime St
S Lime-Lemon St
S Orange-Lime St
S Tangerine-Lime St
S Citrus-Lime St
S Mandarin-Lime St

W Lawrence St
S Appleton St
S State St
S Walnut St
S Elm St
S Oak St
S Maple St
S Birch St
S Cedar St
S Pine St
S Spruce St
S Fir St
S Hemlock St
S Douglas St
S Redwood St
S Cypress St
S Juniper St
S Sycamore St
S Poplar St
S Willow St
S Cottonwood St
S Ash St
S Hickory St
S Chestnut St
S Walnut St
S Pecan St
S Almond St
S Peach St
S Cherry St
S Plum St
S Apple St
S Pear St
S Quince St
S Grape St
S Raisin St
S Fig St
S Olive St
S Lemon St
S Lime St
S Orange St
S Tangerine St
S Citrus St
S Mandarin St
S Tangerine St
S Grapefruit St
S Lemon-Lime St
S Lime-Lemon St
S Orange-Lime St
S Tangerine-Lime St
S Citrus-Lime St
S Mandarin-Lime St

W Lawrence St
S Appleton St
S State St
S Walnut St
S Elm St
S Oak St
S Maple St
S Birch St
S Cedar St
S Pine St
S Spruce St
S Fir St
S Hemlock St
S Douglas St
S Redwood St
S Cypress St
S Juniper St
S Sycamore St
S Poplar St
S Willow St
S Cottonwood St
S Ash St
S Hickory St
S Chestnut St
S Walnut St
S Pecan St
S Almond St
S Peach St
S Cherry St
S Plum St
S Apple St
S Pear St
S Quince St
S Grape St
S Raisin St
S Fig St
S Olive St
S Lemon St
S Lime St
S Orange St
S Tangerine St
S Citrus St
S Mandarin St
S Tangerine St
S Grapefruit St
S Lemon-Lime St
S Lime-Lemon St
S Orange-Lime St
S Tangerine-Lime St
S Citrus-Lime St
S Mandarin-Lime St

W Lawrence St
S Appleton St
S State St
S Walnut St
S Elm St
S Oak St
S Maple St
S Birch St
S Cedar St
S Pine St
S Spruce St
S Fir St
S Hemlock St
S Douglas St
S Redwood St
S Cypress St
S Juniper St
S Sycamore St
S Poplar St
S Willow St
S Cottonwood St
S Ash St
S Hickory St
S Chestnut St
S Walnut St
S Pecan St
S Almond St
S Peach St
S Cherry St
S Plum St
S Apple St
S Pear St
S Quince St
S Grape St
S Raisin St
S Fig St
S Olive St
S Lemon St
S Lime St
S Orange St
S Tangerine St
S Citrus St
S Mandarin St
S Tangerine St
S Grapefruit St
S Lemon-Lime St
S Lime-Lemon St
S Orange-Lime St
S Tangerine-Lime St
S Citrus-Lime St
S Mandarin-Lime St

W Lawrence St
S Appleton St
S State St
S Walnut St
S Elm St
S Oak St
S Maple St
S Birch St
S Cedar St
S Pine St
S Spruce St
S Fir St
S Hemlock St
S Douglas St
S Redwood St
S Cypress St
S Juniper St
S Sycamore St
S Poplar St
S Willow St
S Cottonwood St
S Ash St
S Hickory St
S Chestnut St
S Walnut St
S Pecan St
S Almond St
S Peach St
S Cherry St
S Plum St
S Apple St
S Pear St
S Quince St
S Grape St
S Raisin St
S Fig St
S Olive St
S Lemon St
S Lime St
S Orange St
S Tangerine St
S Citrus St
S Mandarin St
S Tangerine St
S Grapefruit St
S Lemon-Lime St
S Lime-Lemon St
S Orange-Lime St
S Tangerine-Lime St
S Citrus-Lime St
S Mandarin-Lime St

W Lawrence St
S Appleton St
S State St
S Walnut St
S Elm St
S Oak St
S Maple St
S Birch St
S Cedar St
S Pine St
S Spruce St
S Fir St
S Hemlock St
S Douglas St
S Redwood St
S Cypress St
S Juniper St
S Sycamore St
S Poplar St
S Willow St
S Cottonwood St
S Ash St
S Hickory St
S Chestnut St
S Walnut St
S Pecan St
S Almond St
S Peach St
S Cherry St
S Plum St
S Apple St
S Pear St
S Quince St
S Grape St
S Raisin St
S Fig St
S Olive St
S Lemon St
S Lime St
S Orange St
S Tangerine St
S Citrus St
S Mandarin St
S Tangerine St
S Grapefruit St
S Lemon-Lime St
S Lime-Lemon St
S Orange-Lime St
S Tangerine-Lime St
S Citrus-Lime St
S Mandarin-Lime St

W Lawrence St
S Appleton St
S State St
S Walnut St
S Elm St
S Oak St
S Maple St
S Birch St
S Cedar St
S Pine St
S Spruce St
S Fir St
S Hemlock St
S Douglas St
S Redwood St
S Cypress St
S Juniper St
S Sycamore St
S Poplar St
S Willow St
S Cottonwood St
S Ash St
S Hickory St
S Chestnut St
S Walnut St
S Pecan St
S Almond St
S Peach St
S Cherry St
S Plum St
S Apple St
S Pear St
S Quince St
S Grape St
S Raisin St
S Fig St
S Olive St
S Lemon St
S Lime St
S Orange St
S Tangerine St
S Citrus St
S Mandarin St
S Tangerine St
S Grapefruit St
S Lemon-Lime St
S Lime-Lemon St
S Orange-Lime St
S Tangerine-Lime St
S Citrus-Lime St
S Mandarin-Lime St

APPENDIX A

Agency Correspondence



Jane Manibusan

From: Jane Manibusan
Sent: Wednesday, October 01, 2014 2:50 PM
To: cheryl.laatsch@wisconsin.gov
Cc: Jereme Klassy
Subject: Emailing: 14-09-25_ECRE_OFUP_Draft 2014 PL&EWI Rept, 14-09-23_ECRE_APLT_Draft 2014 Invasive Species Monitoring Rept
Attachments: 14-09-25_ECRE_OFUP_Draft 2014 PL&EWI Rept.pdf; 14-09-23_ECRE_APLT_Draft 2014 Invasive Species Monitoring Rept.pdf

Dear Ms. Laatsch;

On behalf of North East Wisconsin (NEW) Hydro, LLC (Licensee), Eagle Creek Renewable Energy, is hereby submitting to your attention the following 2014 Draft License Article Reports for said projects as follows:

- 14-09-23_ECRE_APLT_Draft 2014 Invasive Species Monitoring Rept
Appleton Middle Dam FERC P-7264, License Article 405
Draft Invasive Species 2014 Monitoring Report
- 14-09-25_ECRE_OFUP_Draft 2014 PL&EWI Rept
Oconto Falls Upper FERC P-2523, License Article 407
Draft 2014 Purple Loosestrife & Eurasian Watermilfoil Inventory

The report is requirement of the Federal License pursuant to Article 405 and Article 407. If you have any questions please feel free to contact Mr. Jereme Klassy in the Eagle Creek Renewable Energy Midwest office at (920) 293-4628 ext. 322 or by email at Jereme.klassy@eaglecreekre.com.

Note: To protect against computer viruses, e-mail programs may prevent sending or receiving certain types of file attachments. Check your e-mail security settings to determine how attachments are handled.

Jane Manibusan

From: Jereme Klassy
Sent: Friday, November 14, 2014 1:43 PM
To: 'Laatsch, Cheryl - DNR (Cheryl.Laatsch@Wisconsin.gov)'; Nick_Utrup@fws.gov
Cc: Jane Manibusan
Subject: FW: Emailing: 14-09-25_ECRE_OFUP_Draft 2014 PL&EWI Rept, 14-09-23
_ECRE_APLT_Draft 2014 Invasive Species Monitoring Rept
Attachments: 14-09-25_ECRE_OFUP_Draft 2014 PL&EWI Rept.pdf; 14-09-23_ECRE_APLT_Draft 2014
Invasive Species Monitoring Rept.pdf

I am forwarding this email as a reminder that we are awaiting comments regarding the attached Invasive species monitoring reports. My apologies to Nick as I see that his name was omitted by mistake from this original draft submittal by email. If you have any comments related to the attached draft reports please make them as soon as possible so we can prepare the final report and attach your comments. If you have no comments or do not wish to comment a simple email stating "no comments" will be sufficient. Thanks for your help.

Jereme Klassy
Compliance Manager

116 State Street
Neshkoro, WI 54960 USA
(920) 293-4628 ext. 322
Jereme.klassy@eaglecreekre.com

-----Original Message-----

From: Jane Manibusan
Sent: Wednesday, October 01, 2014 2:48 PM
To: cheryl.laatsch@wisconsin.gov
Cc: Jereme Klassy
Subject: Emailing: 14-09-25_ECRE_OFUP_Draft 2014 PL&EWI Rept, 14-09-23_ECRE_APLT_Draft 2014 Invasive Species
Monitoring Rept

Dear Ms. Laatsch;

On behalf of North East Wisconsin (NEW) Hydro, LLC (Licensee), Eagle Creek Renewable Energy, is hereby submitting to your attention the following 2014 Draft License Article Reports for said projects as follows:

- 14-09-23_ECRE_APLT_Draft 2014 Invasive Species Monitoring Rept
Appleton Middle Dam FERC P-7264, License Article 405
Draft Invasive Species 2014 Monitoring Report
- 14-09-25_ECRE_OFUP_Draft 2014 PL&EWI Rept
Oconto Falls Upper FERC P-2523, License Article 407
Draft 2014 Purple Loosestrife & Eurasian Watermilfoil Inventory

Jane Manibusan

From: Utrup, Nick <nick_utrup@fws.gov>
Sent: Friday, November 14, 2014 2:02 PM
To: Jereme Klassy
Cc: Laatsch, Cheryl - DNR (Cheryl.Laatsch@Wisconsin.gov); Jane Manibusan
Subject: Re: FW: Emailing: 14-09-25_ECRE_OFUP_Draft 2014 PL&EWI Rept, 14-09-23
_ECRE_APLT_Draft 2014 Invasive Species Monitoring Rept

Thanks for providing the draft reports Jereme.

I will add these to my file but will not be providing comments.

Nick

Nick Utrup
U.S. Fish and Wildlife Service
Twin Cities Field Office
4101 American Boulevard East
Bloomington, MN 55425

Office: 612-725-3548 Ext. 2204
Cell: 952-567-9616
FAX: 612-725-3609
Email: Nick_Utrup@fws.gov

On Fri, Nov 14, 2014 at 1:42 PM, Jereme Klassy <jereme.klassy@eaglecreekre.com> wrote:

I am forwarding this email as a reminder that we are awaiting comments regarding the attached Invasive species monitoring reports. My apologies to Nick as I see that his name was omitted by mistake from this original draft submittal by email. If you have any comments related to the attached draft reports please make them as soon as possible so we can prepare the final report and attach your comments. If you have no comments or do not wish to comment a simple email stating "no comments" will be sufficient. Thanks for your help.

Jereme Klassy
Compliance Manager

116 State Street
Neshkoro, WI 54960 USA
(920) 293-4628 ext. 322
Jereme.klassy@eaglecreekre.com

-----Original Message-----

From: Jane Manibusan
Sent: Wednesday, October 01, 2014 2:48 PM
To: cheryl.laatsch@wisconsin.gov
Cc: Jereme Klassy

Jereme Klassy

From: Laatsch, Cheryl - DNR <Cheryl.Laatsch@wisconsin.gov>
Sent: Tuesday, November 18, 2014 10:25 AM
To: Jereme Klassy
Cc: Hudak, Andrew J - DNR; McLennan, Robin - DNR
Subject: FW: Emailing: 14-09-25_ECRE_OFUP_Draft 2014 PL&EWI Rept, 14-09-23_ECRE_APLT_Draft 2014 Invasive Species Monitoring Rept
- DRAFT DNR comments

Hi Jereme - Here are the comments that I received. Please let Andy and I know if you have any questions.

Middle Appleton-

1. The methodology was not provided in the report. Please include this information in future reports. We assume it is in compliance with the license requirements.
2. During the conditions of the survey there were extremely poor conditions to visually inspect for EWM or Zebra mussels and provide any meaningful report on their density or distribution. Selecting a different day with hopefully better conditions or using a rake along various transects could provide more information about EWM and Zebra mussels' distributions.
3. This is a project that could easily use the DNR AIS reporting forms and upload information into SWIMS.
4. It would be helpful if the licensee could at minimum "informally" report other significant AIS species and report them into SWIMS even if the report is did not observe.
5. For this location, there is no meaningful purpose to report on zebra mussels but it is important that the licensee monitor the mussels collected to watch for other AIS species such as quagga mussels or Asiatic Clams, etc... This should also be true for shore land PLS survey and EWM surveys. If no meaningful data analysis or management is slated to occur we continue to advocate for monitoring and reporting of AIS that encompass all potential new occurrences of significant AIS that could constitute a new occurrence. (This will help our all of our partners to address the AIS issues that encompass this impoundment.)

Oconto Falls

1. The monitoring of EWM and PLS has yielded a good analysis of EWM expansion and growth.
2. We would like your informal participation with monitoring of Flowering Rush within the Oconto Falls project area as it reports on EWM and PLS.
3. We would like your informal participation with using the AIS observation and tracking sheet and uploading all monitoring data and reports into SWIMS. If you are interested in partnering with us on informal reporting of AIS, please let me know.

We are committed to service excellence.
Visit our survey at <http://dnr.wi.gov/customersurvey> to evaluate how I did.

Cheryl Laatsch
Statewide FERC Coordinator - Watershed Bureau/Water Division Wisconsin Department of Natural Resources
N7225 Highway 28, Horicon WI 53032
Phone: 920-387-7869
Fax: 920-387-7888
Cheryl.laatsch@wisconsin.gov

dnr.wi.gov

We are committed to service excellence.
Visit our survey at <http://dnr.wi.gov/customersurvey> to evaluate how I did.

Andrew Hudak
Phone: (920) 662-5117
Andrew.hudak@wisconsin.gov

-----Original Message-----
From: Laatsch, Cheryl - DNR
Sent: Monday, November 17, 2014 1:45 PM
To: Hudak, Andrew J - DNR
Subject: FW: Emailing: 14-09-25_ECRE_OFUP_Draft 2014 PL&EWI Rept, 14-09-23_ECRE_APLT_Draft 2014 Invasive Species Monitoring Rept

Hi Andy - I sent these reports over to you on Oct 9th. I am not able to locate your comments. Please send me comments you may have ASAP, as the timeline has expired. thanks

We are committed to service excellence.
Visit our survey at <http://dnr.wi.gov/customersurvey> to evaluate how I did.

Cheryl Laatsch
Phone: 920-387-7869