



**Wisconsin
Electric**
POWER COMPANY

231 W. Michigan, P.O. Box 2046, Milwaukee, WI 53201-2046

ORIGINAL

FILED
OFFICE OF THE SECRETARY

97 AUG 11 PM 3:11

(414) 221-2345

FEDERAL ENERGY
REGULATORY COMMISSION

August 7, 1997

**Mr. Robert
Rosenberger**
Wisconsin Dept. of
Natural Resources
P.O. Box 199
1025 Hwy. C
Wausauke, WI 54177

Mr. Gary Whelan
Michigan Dept. of
Natural Resources
Fisheries Division
530 West Allegan St.
P.O. Box 30446
Lansing, MI 48909

Mr. Jim Fossum
U.S. Fish and Wildlife
Service
1015 Challenger Court
Green Bay, WI 54311

RE: Brule Project FERC 2431 - 028 ^{old}
Article 410
Purple Loosestrife and Eurasian Water Milfoil Monitoring

Please find enclosed the results of monitoring for Purple Loosestrife and Eurasian Water Milfoil at the Brule Project.

Wisconsin Electric is by this letter, filing one original and eight additional copies of these results with the Secretary of FERC in compliance with order 2431-014 issued April 30, 1996.

Please feel free to call me at (414) 221-2413, if you have any questions on this matter.

Sincerely,

Rita L. Hayen
Rita L. Hayen, P.E.
Project Engineer, Hydro Licensing

CC: Ms. Lois Cashell, FERC (one original + eight copies)

9708130559-3

F:\WINUSER\WINWORD\BRUL410.DOC

AJ
FERC DOCKETED

AUG 11 1997

**Report for 1997 on Monitoring for Purple Loosestrife
and Eurasian Water Milfoil
at the Brule Project - FERC 2431**

The entire shoreline of the Brule impoundment was visually surveyed by Wisconsin Electric Power Company scientific staff (John Hrobar and Noel Cutright) in a boat. All waters and wetlands within the project boundary and the Brule River for 0.25 mile downstream of the Brule powerhouse were surveyed, including those areas of the impoundment supporting growth of submersed aquatic plants. The survey was conducted on July 24, 1997. NO purple loosestrife (*Lythrum salicaria*) plants or Eurasian water milfoil (*Myriophyllum spicatum*) were found. Aquatic plant growth, both rooted plants in the near-shore area and submersed plants in deeper water, was more abundant than that observed on visits on the Brule impoundment in previous years. This was probably due to changes in the bottom substrate that provided a better rooting medium following the drawdown during 1996 and greater light penetration due to clearer, less stained water.

Wisconsin Electric staff posted information on purple loosestrife (Exhibit 1), and Eurasian water milfoil (Exhibits 2 and 3) identification and prevention of spread on bulletin boards located at Wisconsin Electric recreation sites 23 and 28 during the week of April 21, 1997. Inspections of this information were made in July, and all signage is present and weathering well.

KNOCK IT OFF!

PREVENT THE SPREAD OF EURASIAN WATER MILFOIL,
KNOCK ALL AQUATIC PLANTS OFF YOUR BOAT AND TRAILER.



EURASIAN WATER MILFOIL

PLEASE REMOVE ALL AQUATIC PLANTS FROM BOATS AND TRAILERS

Attention: (1) Do not use your boat or trailer in any water body until you have removed all aquatic plants from your boat and trailer. (2) Do not use your boat or trailer in any water body until you have removed all aquatic plants from your boat and trailer.

You can help prevent the spread of Eurasian water milfoil to neighboring states by removing all aquatic plants and weeds from your boat and trailer before you leave the water. Please, take special care to remove milfoil from your boat and trailer. And, please, do not use your boat or trailer in any water body until you have removed all aquatic plants from your boat and trailer.

Please to look for aquatic plants. Please to look for aquatic plants.

Thank you!

Wisconsin Department of Natural Resources
Lake Management Program

EXHIBIT 1

EXHIBIT 2



PURPLE LOOSESTRIFE

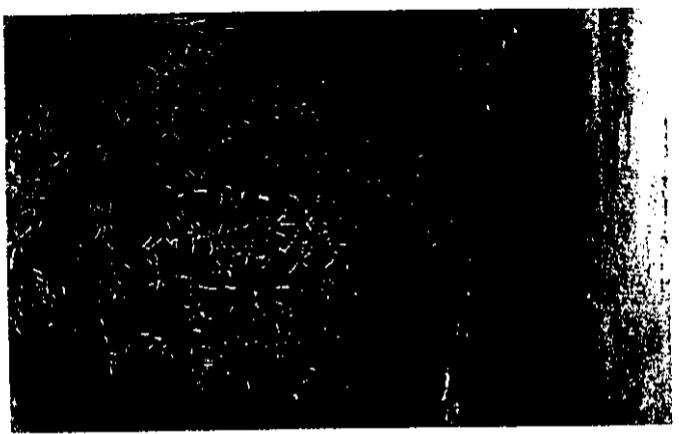
An Attractive
but **Serious Threat**
to
Wetlands and Waterways

Purple Loosestrife is an aggressive plant
that is invading our wetlands and.....

- displacing valuable wetland plants
- degrading wildlife habitat
- choking waterways

LOOK FOR PURPLE LOOSESTRIFE

- From Mid-July through Early September when it's in bloom and easily recognized.
- In shallow water wetlands and on wet soils.
- In cattail marshes, sedge meadows, and open bogs.
- Along stream and river banks, shores of lakes, and near shore areas.
- In ditches and along ditch and dike banks
- On exposed or otherwise disturbed wet soils.



In order to control the spread of purple loosestrife, Wisconsin Electric needs to know where it is found in and around our Wilderness Shores. You can play a major role in this effort by reporting purple loosestrife locations. Please contact our Iron Mountain Headquarters - **Phone (906) 779-2546** to report sightings.