

5	0.124	23.23	7.80	6.97	9	16	1.8	13	1.44
6	0.092	21.88	7.83	7.85	10	13	1.3	21	2.10
6	0.113	19.92	7.86	9.18	10	21	2.1	10	1.00
6	0.125	23.45	7.89	7.04	9	23	2.6	23	2.56
7	0.091	20.93	7.80	7.50	8	12	1.5	0	0.00
7	0.105	19.86	7.89	9.17	10	19	1.9	0	0.00
8	0.091	22.25	8.02	7.91	10	15	1.5	11	1.10
8	0.114	20.11	7.89	9.38	10	24	2.4	1	0.10
8	0.125	23.42	7.88	6.65	10	34	3.4	19	1.90
9	0.093	22.12	7.83	7.49	10	22	2.2	9	0.90
9	0.115	20.67	8.08	9.96	10	25	2.5	0	0.00
9	0.125	23.52	7.91	6.57	9	36	4.0	12	1.33
10	0.092	22.00	7.71	7.76	10	23	2.3	13	1.30
10	0.114	20.47	8.06	9.49	10	23	2.3	2	0.20
10	0.124	23.61	7.85	6.76	10	27	2.7	19	1.90
11	0.101	22.87	7.77	7.88	10	28	2.8	9	0.90
11	0.114	20.00	7.92	9.11	10	27	2.7	3	0.30
11	0.128	24.54	7.98	6.87	10	25	2.5	11	1.10
12	0.103	22.70	8.37	8.45	10	18	1.8	27	2.70
12	0.116	19.60	7.93	9.05	10	22	2.2	9	0.90
12	0.130	24.56	8.04	6.91	10	27	2.7	9	0.90
13	0.107	22.10	7.87	8.23	10	15	1.5	40	4.00
13	0.122	20.13	7.97	9.65	10	11	1.1	1	0.10
13	0.127	24.44	8.02	6.71	10	22	2.2	18	1.80
14	0.096	22.75	7.91	8.28	10	19	1.9	22	2.20
14	0.116	20.60	7.99	9.46	10	7	0.7	1	0.10
14	0.127	24.52	8.06	7.07	10	36	3.6	13	1.30
15	0.094	22.61	7.88	7.92	10	23	2.3	21	2.10
15	0.113	20.14	7.60	9.54	10	5	0.5	1	0.10
15	0.128	24.09	7.93	6.80	10	17	1.7	9	0.90
16	0.095	22.99	7.97	8.00	9	10	1.1	12	1.33
16	0.113	20.29	7.93	9.44	10	7	0.7	1	0.10
16	0.128	24.34	7.95	6.97	10	26	2.6	15	1.50
17	0.095	23.11	7.88	7.79	10	26	2.6	17	1.70
18	0.093	22.27	7.70	7.80	10	27	2.7	37	3.70
18	0.115	20.46	7.98	9.59	10	17	1.7	9	0.90
18	0.126	23.66	7.96	7.32	10	16	1.6	1	0.10

19	0.094	23.47	7.80	8.07	10	22	2.2	15	1.50
19	0.114	19.95	7.86	9.26	10	16	1.6	4	0.40
19	0.123	23.12	7.91	6.73	10	28	2.8	5	0.50
20	0.094	22.96	7.80	8.12	10	25	2.5	25	2.50
20	0.116	20.80	7.96	9.42	10	10	1.0	1	0.10
20	0.119	23.01	7.84	6.68	10	26	2.6	11	1.10
21	0.093	22.79	7.77	7.92	5	6	1.2	11	2.20
21	0.117	21.03	8.02	9.53	10	17	1.7	3	0.30
2008 TOTAL					199	378	1.9	326	1.63
2009 TOTAL					200	318	1.6	54	0.27
2010 TOTAL					168	435	2.5	227	1.30

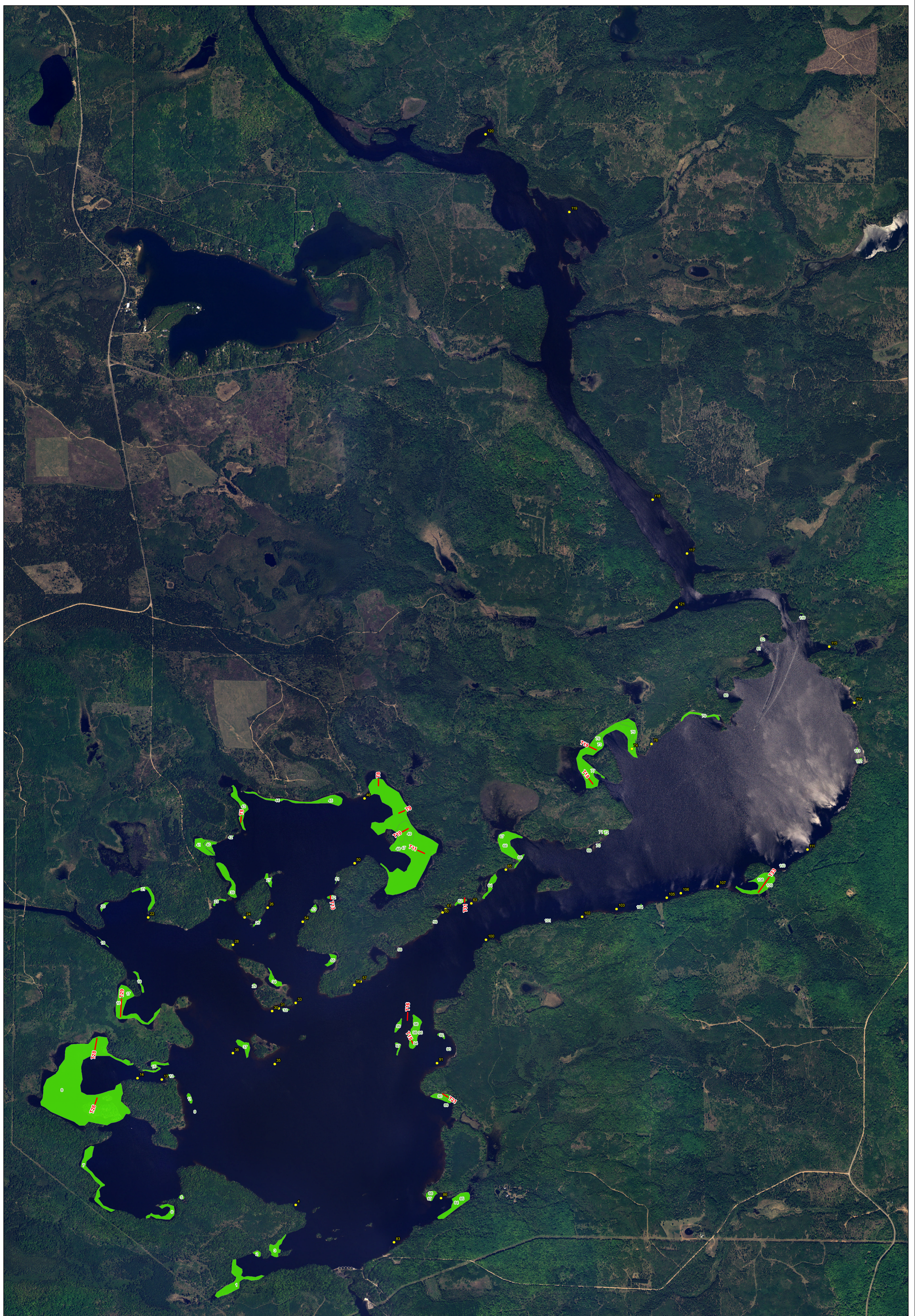
1.1.4 Peavy Falls Reservoir

Two hundred ninety six stems were collected throughout Peavy Falls Reservoir in 2008, 60 stems were collected in 2009, and 156 stems were collected in 2010 (Figure 1-4).

The weevil population was considerably high in 2009 given the sparse conditions. The EWM was starting to come back during the July 2010 survey. Lab analysis revealed a decrease in the overall weevil population to 0.52 weevils/stem (Table 1-4). The conductivity, temperature, and pH increased at almost every site when comparing 2008 to 2010. The DO readings fluctuated.

Table 1-4 2008 (Gray), 2009 (White) and 2010 (Yellow) Stem Analysis and Water Quality Data at Each Transect in Peavy Falls Reservoir

Transect	Water Quality				Stem Counts			Weevil Count	
	Cond	Temp	pH	DO	Stems	Meristems	Ave. Meristems/ Stem	Total Weevils	Weevils/ Stem
1	0.095	22.10	8.48	7.64	10	26	2.6	25	2.50
2	0.095	21.94	8.22	7.67	10	18	1.8	14	1.40
3	0.094	21.99	7.92	7.78	10	34	3.4	15	1.50
4	0.092	22.14	7.74	7.56	10	36	3.6	31	3.10
5	0.093	22.26	7.85	8.25	9	14	1.55	10	1.11
5	0.129	24.47	8.13	12.25	10	18	1.8	2	0.20
6	0.092	22.24	7.94	7.73	10	14	1.4	17	1.70
7	0.094	22.33	7.98	7.47	10	21	2.1	33	3.30



**Figure 1-4. WE Energies
Peavy Falls Hydro Project.
2010 Weevil Distribution Survey.**

- Survey Transect
- PEA_pts (WE Energies)
- PEA_poly (WE Energies)

