

Table 1-8 2008 (Gray) and 2010 (Yellow) Stem Analysis and Water Quality Data at Each Transect in Lower Paint Reservoir

Transect	Water Quality				Stem Counts			Weevil Count	
	Cond	Temp	pH	DO	Stems	Meristems	Ave. Meristem/ Stem	Total Weevils	Ave. Weevils/ Stem
1	0.162	21.97	7.97	7.28	10	11	1.1	10	1.00
1	0.161	25.17	7.71	6.37	9	29	3.2	17	1.89
2	0.162	21.46	8.02	7.98	10	14	1.4	12	1.20
2	0.160	25.26	7.77	6.72	10	29	2.9	16	1.60
3	0.160	20.77	8.15	7.77	10	14	1.4	6	0.60
3	0.148	25.97	7.74	6.49	9	25	2.8	27	3.00
4	0.161	20.96	8.09	7.70	10	14	1.4	3	0.30
4	0.156	24.66	7.69	5.95	8	16	2.0	14	1.75
5	0.162	20.83	8.12	7.90	10	11	1.1	12	1.20
5	0.160	25.42	7.82	11.41	10	35	3.5	29	2.90
6	0.165	21.27	8.25	8.58	10	12	1.2	12	1.20
6	0.162	24.64	7.89	12.83	10	31	3.1	30	3.00
7	0.158	20.01	8.29	8.06	10	18	1.8	25	2.50
7	0.160	24.52	7.67	12.20	10	20	2.0	21	2.10
8	0.167	21.46	8.31	8.56	10	26	2.6	37	3.70
8	0.155	23.10	7.46	10.66	10	22	2.2	54	5.40
9	0.163	20.58	8.15	7.59	10	27	2.7	10	1.00
9	0.153	24.65	8.15	12.35	10	23	2.3	7	0.70
10	0.163	19.24	8.13	7.35	10	27	2.7	13	1.30
10	0.160	23.22	7.54	10.93	10	24	2.4	13	1.30
11	0.161	20.59	8.12	6.67	10	26	2.6	16	1.60
11	0.164	23.87	7.61	11.93	10	13	1.3	25	2.50
12	8.540	20.37	8.54	7.49	10	22	2.2	14	1.40
12	0.148	22.30	8.29	11.30	10	19	1.9	2	0.20
13	0.160	25.21	7.91	6.48	10	10	1.0	15	1.50
2008 TOTAL					120	222	1.85	170	1.42
2010 TOTAL					126	296	2.4	276	2.14

1.1.9 Twin Falls Reservoir

The weevil distribution study on Twin Falls Reservoir took place on July 9, 2010. One hundred and two weevil life stages were found on 237 stems collected from the original sampling sites (Figure 1-9). The overall weevil population decreased from 2008 to 2010 from 1.02 weevils/stem to 0.42 weevils/stem (Table 1-9). Field notes indicate that the EWM beds at every

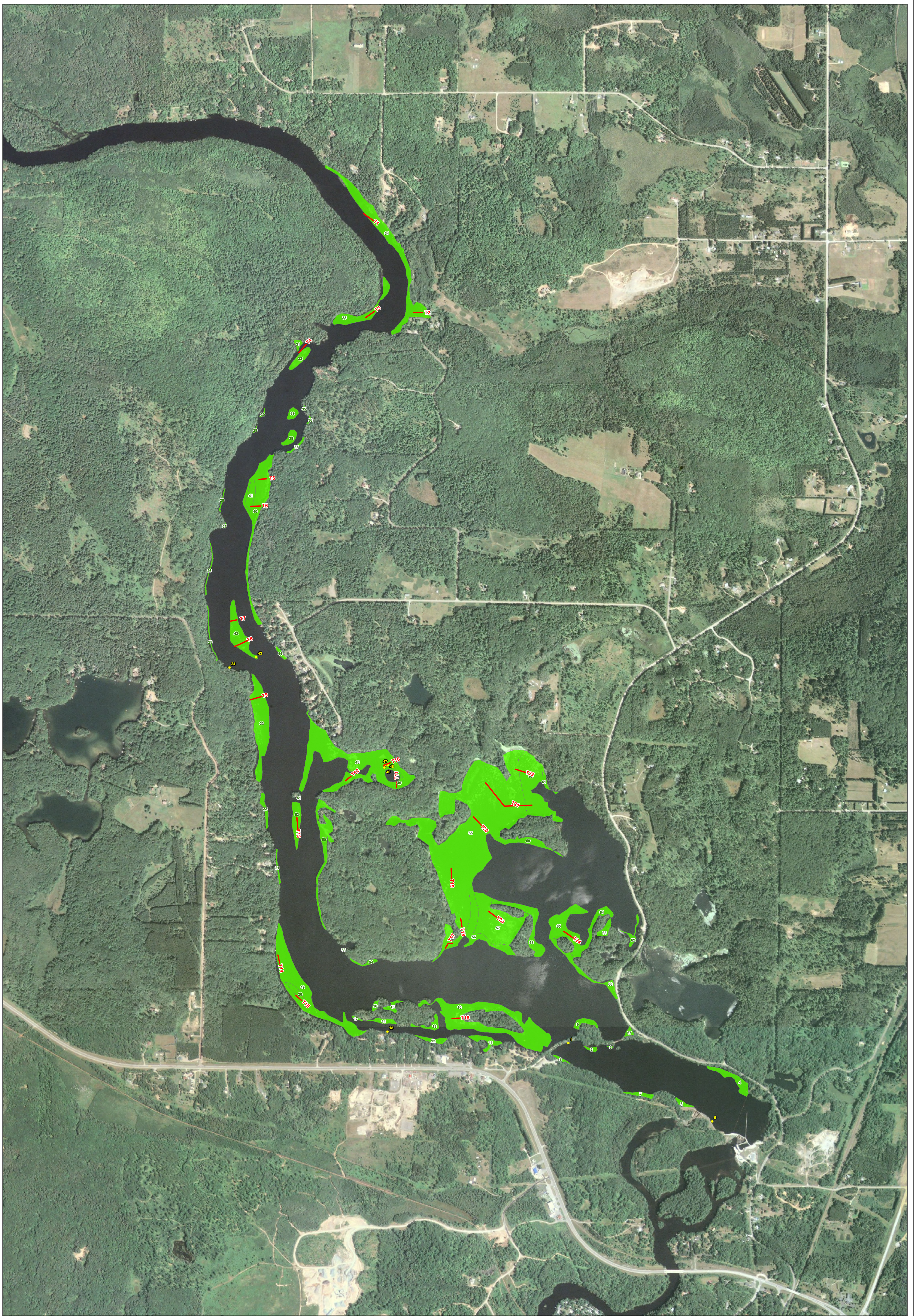


Figure 1-9. WE Energies Twin Falls Hydro Project. 2008 & 2010 Weevil Distribution Survey.

- Survey Transect
- TWF_pts (WE Energies)
- TWF_poly (WE Energies)

