

ORIGINAL



2009 FEB 09 P 3:34

Wisconsin Public Service Corporation

February 6, 2009

Ms. Kimberly D. Bose, Secretary  
 Federal Energy Regulatory Commission  
 Mail Code: DTCA, HL 21.3  
 888 First Street, N.E.  
 Washington, DC 20426

FERC No. 2595

128

Dear Secretary Bose:

As per the Water Quality Monitoring Plans for the High Falls Hydroelectric Project, Wisconsin Public Service Corporation (WPSC) is pleased to submit water quality monitoring data from the 2008 monitoring season.

Per the water quality monitoring plans for the High Falls Hydroelectric Project, dissolved oxygen (D.O.), temperature, and pH were monitored in the tailrace of the High Falls Hydroelectric facility, at the Boat Landing No. 3 Bridge over the Peshtigo River. Water quality monitoring was conducted using Hydrolab Datasonde<sup>®</sup> monitoring equipment. Per the manufacturer, the monitoring equipment has a D.O. accuracy of +/- 0.2 mg/l. All monitoring data collected was adjusted for a loss of calibration if a post calibration of the equipment showed calibration drift of 0.2 mg/l or greater. For compliance purposes, any dissolved oxygen readings below 4.80 mg/l is an exceedence of the Project License limit.

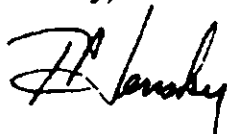
During the month of June, WPSC experienced multiple dissolved oxygen meter equipment failures which resulted in missing or erratic monitoring data, however, it is very unlikely that dissolved oxygen levels were below water quality standards during these periods as dissolved oxygen concentrations were not consistently below 6 milligrams per liter until July of 2008. There is only one period of dissolved oxygen readings below the water quality standard to note. The period in question occurred on June 13, 2008, and is an anomaly given that there were no changes in operation during the period in question and the previous and subsequent hourly readings were two to three milligrams per liter higher.

There are no deviations from the State temperature or pH standards to report. Water quality monitoring data collected between June 1 and September 30, 2008 is attached in Appendix A. WPSC has consulted with the Wisconsin Department of Natural Resources (WDNR) and U.S. Fish and Wildlife Service (FWS) regarding the water quality monitoring data. No comments were received from WDNR or FWS on the water quality monitoring data. Documentation of agency consultation is attached in Appendix B.

Ms. Kimberly D. Bose, Secretary  
February 6, 2009  
Page 2 of 2

Should you have any questions or concerns, please feel free to contact Mr. Mark Metcalf at (920) 433-1833. Thank you for your time and consideration.

Sincerely,



Terry P. Jensky  
Vice President - Energy Supply Operations  
Wisconsin Public Service Corporation  
Telephone: (920) 433-2900

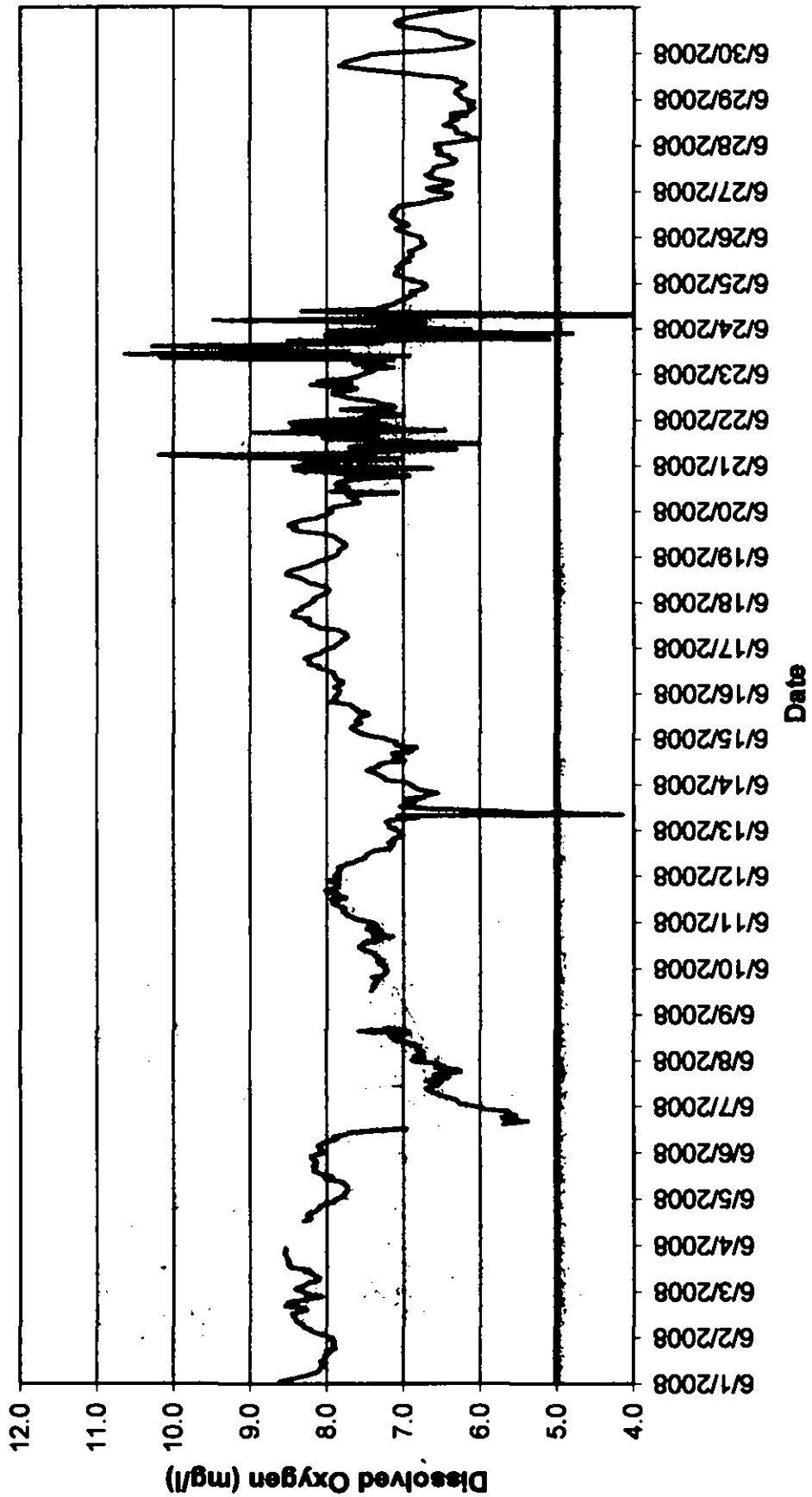
Enc.

cc: Mr. Howard Giesler, WPSC - PUL (Cover Only)  
Mr. Gil Snyder, WPSC - D2 (Cover Only)  
Mr. Bruce Crocker, WPSC - D2 (Cover Only)  
Mr. Ed Brandt, WPSC - WMAR (Cover Only)  
Mr. Michael Donofrio, WDNR (Cover Only)  
Mr. Nick Utrup, USFWS (Cover Only)  
Mr. Shawn Puzen, IBS - D2 (Cover Only)  
Ms. Joan Johaneck, WPSC - D2 (file)

**Appendix A**  
**High Falls Hydroelectric Project**  
**FERC No. 2595**  
**2008 Water Quality Monitoring Data**

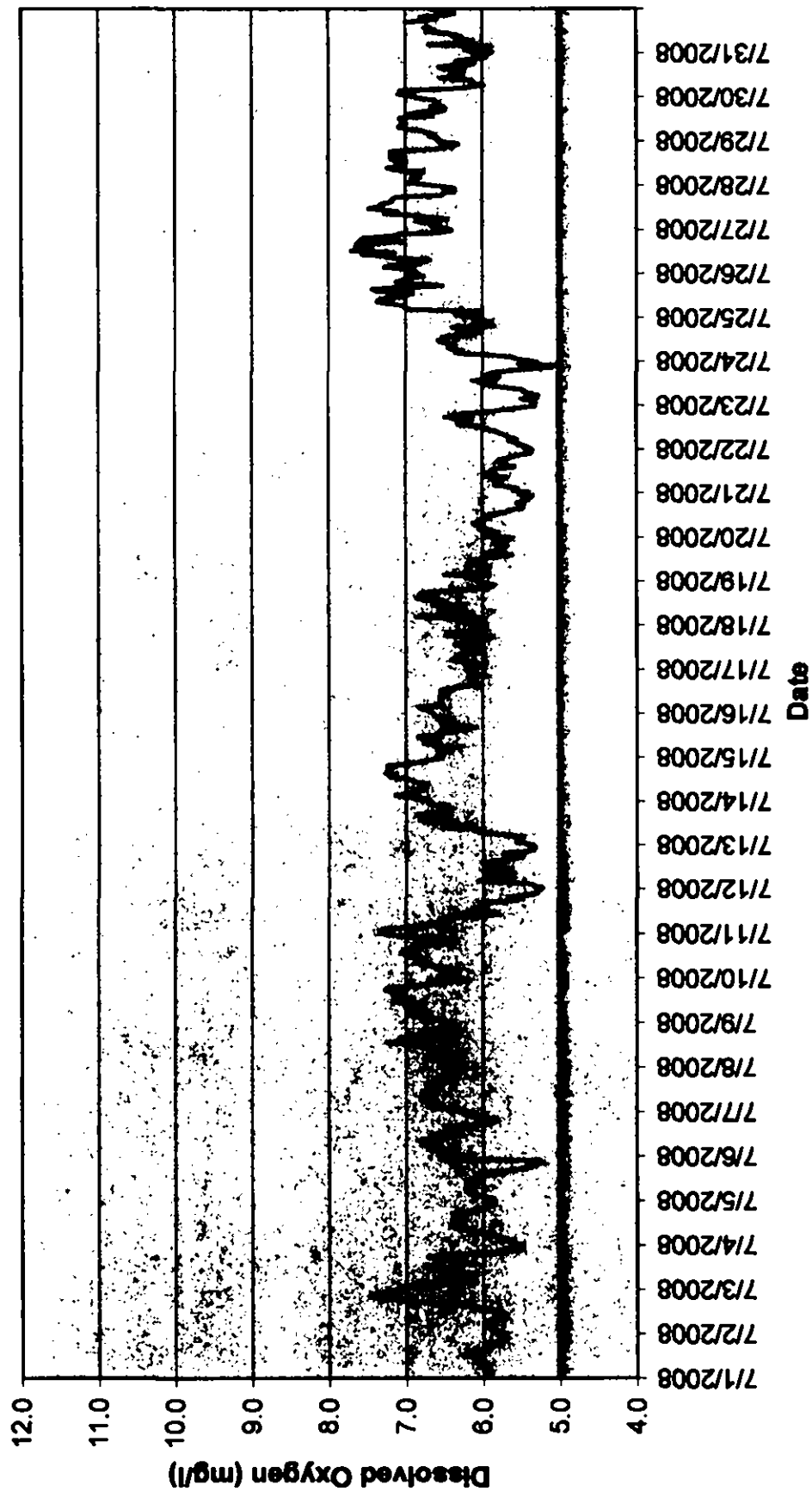
### High Falls Dissolved Oxygen Monitoring - June 2008

— June — Water Quality Standard



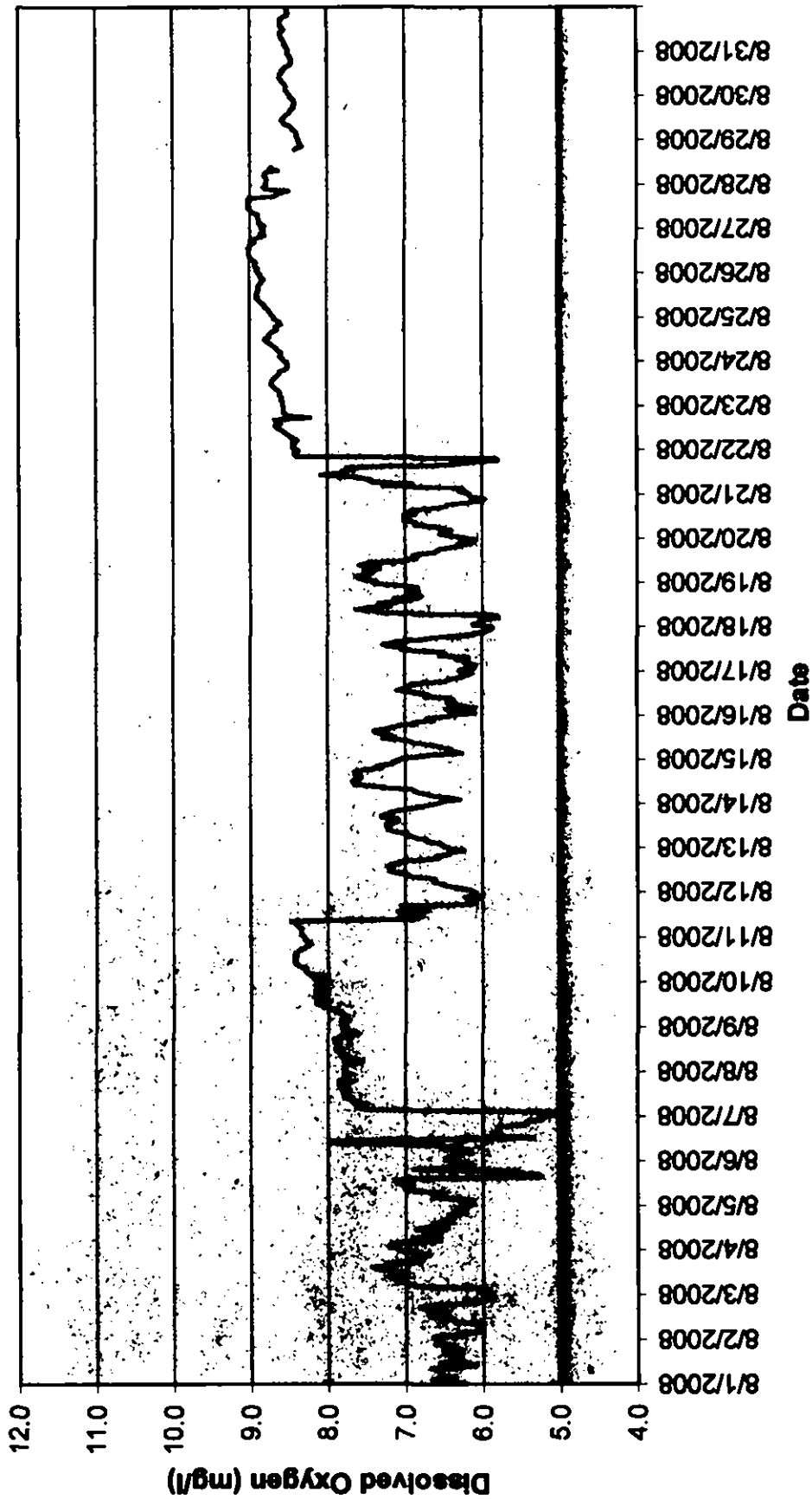
### High Falls Dissolved Oxygen Monitoring - July 2008

July — Water Quality Standard



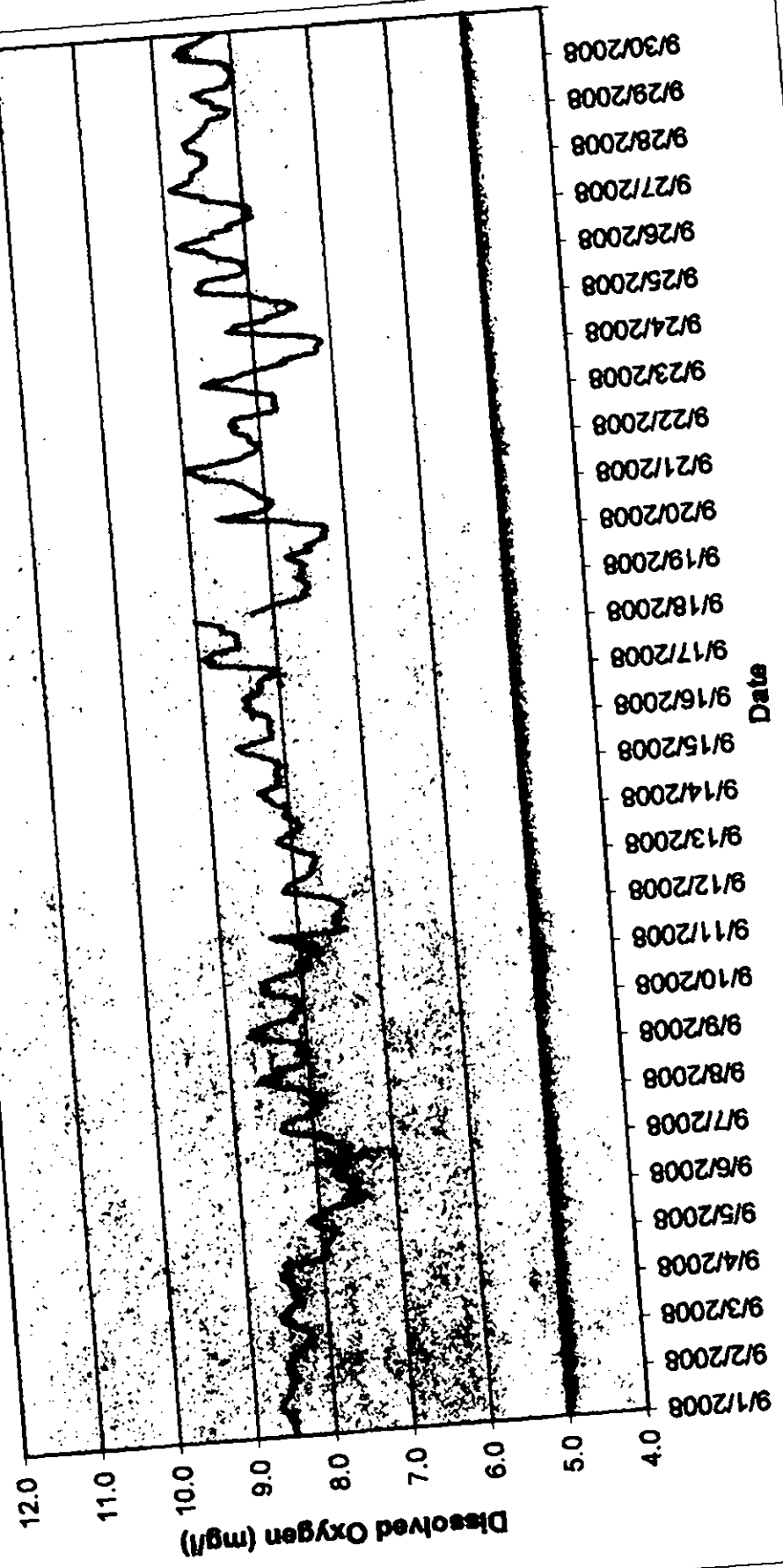
### High Falls Dissolved Oxygen Monitoring - August 2008

— August      — Water Quality Standard



# High Falls Dissolved Oxygen Monitoring - September 2008

— September — Water Quality Standard



High Falls Dissolved Oxygen Summary - June 2008

Time	06/01/08	06/02/08	06/03/08	06/04/08	06/05/08	06/06/08	06/07/08	06/08/08	06/09/08	06/10/08	06/11/08	06/12/08	06/13/08	06/14/08	06/15/08	06/16/08
HHMMSS	0	8.0	8.3	8.3	7.8	8.0	6.1	6.9	7.2	7.5	7.9	7.9	7.1	6.9	7.3	7.9
10000	8.6	8.0	8.4	8.4	7.8	8.1	6.3	6.7	7.2	7.6	7.8	7.8	7.2	7.0	7.5	7.8
20000	8.5	8.1	8.4	8.4	7.8	8.1	6.3	6.8	7.3	7.7	7.8	7.2	7.2	7.2	7.4	7.9
30000	8.4	8.2	8.3	8.3	7.8	8.1	6.3	6.8	7.3	7.7	7.8	7.2	7.2	7.2	7.6	7.9
40000	8.3	8.2	8.3	8.3	7.7	8.1	6.4	6.8	7.3	7.8	7.9	7.2	7.2	7.3	7.6	7.9
50000	8.2	8.3	8.1	8.1	7.7	8.0	6.5	6.8	7.3	7.8	7.8	7.2	7.2	7.3	7.7	7.8
60000	8.1	8.3	8.1	8.1	7.7	7.9	6.6	6.8	7.4	7.8	7.7	7.7	6.8	7.4	7.7	7.8
70000	8.1	8.4	8.1	8.1	7.8	7.9	6.6	6.8	7.4	7.8	7.6	7.6	7.1	7.5	7.6	7.9
80000	8.1	8.4	8.2	8.2	7.8	7.9	6.7	6.9	7.4	7.9	7.8	7.8	7.4	7.4	7.6	7.9
90000	8.0	8.4	8.2	8.2	7.9	7.8	6.7	7.0	7.5	7.9	7.5	7.5	7.3	7.3	7.6	7.9
100000	8.1	8.4	8.3	8.3	8.0	7.7	6.6	7.1	7.6	7.9	7.5	7.5	7.3	7.3	7.6	7.9
110000	8.1	8.4	8.2	8.2	7.9	7.4	6.6	7.0	7.6	7.9	7.5	7.5	6.7	7.2	7.6	7.9
120000	8.0	8.5	8.4	8.3	8.0	7.0	6.5	7.2	7.5	7.8	7.4	7.4	7.0	7.0	7.5	8.0
130000	8.0	8.3	8.5	8.2	8.1	7.0	6.7	7.0	7.4	7.5	7.8	7.4	7.0	7.1	7.5	8.1
140000	8.0	8.3	8.5	8.2	8.2	5.7	6.6	6.9	7.4	7.3	7.9	7.2	7.0	7.0	7.6	8.1
150000	8.0	8.3	8.5	8.3	8.2	5.8	6.4	7.6	7.4	7.4	8.0	7.2	6.8	7.1	7.6	8.2
160000	8.0	8.5	8.5	8.2	8.2	5.4	6.6	7.0	7.4	7.1	8.0	7.1	7.0	7.1	7.7	8.2
170000	8.0	8.5	8.5	8.2	8.2	5.7	6.5	7.0	7.4	7.3	7.9	7.2	6.7	6.9	7.7	8.2
180000	7.9	8.5	8.5	8.1	8.1	5.7	6.3	7.3	7.3	7.4	7.9	7.1	6.7	6.9	7.7	8.3
190000	7.9	8.3	8.6	8.1	8.2	5.5	6.3	7.4	7.4	7.3	7.8	7.1	6.6	6.8	8.0	8.2
200000	7.9	8.2	8.6	8.1	8.2	5.6	6.6	7.3	7.3	7.5	7.9	7.1	6.7	7.1	7.9	8.2
210000	7.9	8.1	8.5	8.0	8.2	5.6	6.5	7.2	7.2	7.4	8.0	7.0	6.8	7.1	7.9	8.1
220000	7.9	8.2	8.5	7.9	8.2	5.9	6.5	7.2	7.2	7.3	7.9	7.0	6.9	7.1	7.9	8.1
230000	7.9	8.3	8.5	7.9	8.1	6.0	6.6	7.2	7.4	7.4	7.8	7.0	6.9	7.2	7.9	8.0
Daily Max	8.6	8.5	8.6	8.3	8.2	8.1	6.8	7.6	7.6	7.6	8.0	7.9	7.2	7.5	8.0	8.3
Daily Min	7.9	8.0	8.1	7.9	7.7	5.4	6.1	6.7	7.1	7.1	7.5	7.0	4.1	6.8	7.3	7.8
Average	8.1	8.3	8.4	8.1	8.0	6.9	6.5	6.9	7.4	7.4	7.8	7.4	6.7	7.2	7.6	8.0

Monthly average: 7.4

- Data missing due to equipment malfunction
- Data missing - equipment retrieval/replacement
- Possible anomalies. No change in plant operation at the time.
- Erratic data - likely due to equipment malfunction



High Falls Dissolved Oxygen Summary - June 2008

Time HHMMSS	06/17/08	06/18/08	06/19/08	06/20/08	06/21/08	06/22/08	06/23/08	06/24/08	06/25/08	06/26/08	06/27/08	06/28/08	06/29/08	06/30/08
0	7.9	8.2	7.9	7.9	7.9				6.8	6.8	6.6	6.6	6.3	7.1
10000	7.9	8.2	7.9	8.0	8.3				6.9	6.9	6.7	6.4	6.3	6.6
20000	7.8	8.2	7.8	7.9	8.0				7.0	7.0	6.5	6.2	6.3	6.4
30000	7.8	8.1	7.8	7.7	7.1				7.0	7.1	6.4	6.0	6.3	6.2
40000	7.8	8.0	7.8	7.6					7.1	7.1	6.4	6.2	6.3	6.1
50000	7.7	8.0	7.8	7.6					7.1	7.0	6.5	6.2	6.3	6.1
60000	7.7	8.0	7.8	7.6					7.1	6.9	6.6	6.3	6.2	6.2
70000	7.8	8.0	7.8	7.7					7.1	7.0	6.7	6.3	6.2	6.3
80000	7.8	8.0	7.8	7.7					7.1	7.1	6.7	6.3	6.2	6.4
90000	7.9	8.1	7.9	7.1					7.0	7.1	6.6	6.3	6.3	6.5
100000	8.1	8.2	7.9	7.9				7.3	7.0	7.2	6.6	6.5	6.3	6.5
110000	8.1	8.3	8.0	7.7				7.3	6.9	7.2	6.6	6.4	6.4	6.6
120000	8.2	8.3	8.1	7.7				7.2	6.9	7.1	6.6	6.4	6.6	6.6
130000	8.2	8.4	8.4	7.9				7.1	6.9	7.2	6.5	6.3	6.9	7.0
140000	8.3	8.5	8.4	7.9				7.1	6.9	7.1	6.4	6.4	7.2	7.1
150000	8.2	8.5	8.4	7.8				7.0	6.9	7.1	6.3	6.2	7.5	7.1
160000	8.4	8.5	8.5	7.7				7.0	6.9	7.1	6.3	6.4	7.7	7.1
170000	8.5	8.4	8.5	7.5				6.9	6.9	6.8	6.4	6.2	7.8	7.0
180000	8.4	8.3	8.4	6.9				6.9	6.8	6.7	6.4	6.1	7.8	6.9
190000	8.4	8.2	8.3	7.8				6.9	6.8	6.6	6.6	6.1	7.8	6.8
200000	8.3	8.2	8.1	7.9				6.8	6.7	6.4	6.5	6.2	7.7	6.7
210000	8.3	8.1	8.1	8.4				6.7	6.8	6.4	6.5	6.2	7.6	6.5
220000	8.3	8.0	8.0	6.6				6.7	6.8	6.4	6.6	6.1	7.5	6.2
230000	8.2	8.0	7.9	8.4				6.7	6.8	6.5	6.6	6.2	7.4	6.1
Daily Max	8.5	8.5	8.5	8.4	10.2	8.2	10.6	9.5	7.1	7.2	6.7	6.6	7.8	7.1
Daily Min	7.7	8.0	7.8	6.6	6.0	7.1	4.8	0.2	6.7	6.4	6.3	6.0	6.2	6.1
Average	8.1	8.2	8.0	7.7	7.8	7.6	7.7	6.8	6.9	6.9	6.5	6.3	6.9	6.6

Monthly average: 7.4

- █ Data missing due to equipment malfunction
- █ Data missing - equipment retrieval/replacement
- █ Possible anomalies. No change in plant operation at the time.
- █ Erratic data - likely due to equipment malfunction

High Falls Dissolved Oxygen Summary - July 2008

Time	07/01/08	07/02/08	07/03/08	07/04/08	07/05/08	07/06/08	07/07/08	07/08/08	07/09/08	07/10/08	07/11/08	07/12/08	07/13/08	07/14/08	07/15/08	07/16/08
0	6.0	5.8	7.1	5.6	5.9	6.3	6.3	6.6	6.5	6.6	7.3	5.2	5.4	6.7	6.6	6.7
10000	6.0	5.8	7.0	5.6	5.9	6.4	6.4	6.6	6.6	6.3	7.4	5.3	5.6	6.8	6.5	6.7
20000	6.0	5.9	6.7	5.7	6.0	6.4	6.7	6.4	6.8	6.4	7.3	5.4	5.6	7.0	6.6	6.8
30000	5.9	5.9	6.4	5.7	6.1	6.7	6.6	6.4	6.8	6.3	6.9	5.7	5.6	7.1	6.6	6.8
40000	5.9	5.9	6.2	5.8	6.2	6.6	6.6	6.8	7.0	6.5	6.8	6.1	5.5	6.9	6.6	6.5
50000	5.9	5.9	6.1	6.0	6.2	6.7	6.7	6.6	7.0	6.6	6.7	5.7	5.7	6.8	6.4	6.6
60000	5.9	6.0	6.1	6.0	6.2	6.8	6.8	6.5	6.8	6.6	6.4	5.8	6.0	6.9	6.6	6.5
70000	6.0	5.9	6.1	6.2	6.2	6.6	6.7	6.3	7.0	6.8	6.4	5.6	6.1	6.7	6.8	6.6
80000	6.1	5.7	6.3	6.2	6.2	6.8	6.7	6.5	7.0	6.8	6.5	5.6	6.0	6.8	6.6	6.6
90000	6.1	5.8	6.4	6.4	6.2	6.7	6.8	6.5	6.8	6.6	6.0	6.0	6.5	6.7	6.6	6.6
100000	6.1	5.7	6.6	6.4	6.2	6.8	6.8	6.7	7.0	6.8	5.8	5.8	6.1	6.9	6.8	6.5
110000	6.1	5.8	6.7	6.4	6.2	6.4	6.7	6.8	7.2	7.0	6.2	5.7	6.5	6.9	6.8	6.5
120000	6.3	5.9	6.8	6.3	6.1	6.4	6.7	7.0	7.0	6.9	6.0	5.8	6.7	7.0	6.5	6.6
130000	6.2	6.0	6.8	6.4	6.1	6.4	6.5	7.3	7.1	7.1	6.1	5.9	6.8	7.2	6.6	6.5
140000	6.1	6.1	6.6	6.3	6.0	6.3	6.6	7.0	7.2	7.0	6.0	6.0	6.0	7.1	6.4	6.3
150000	6.0	6.4	6.6	6.4	5.8	6.5	6.6	7.0	7.2	7.0	6.0	5.7	6.5	7.3	6.2	6.0
160000	5.9	6.6	6.5	6.4	5.7	6.2	6.6	6.6	7.1	6.9	5.9	5.6	6.9	7.2	6.1	6.1
170000	5.9	7.0	6.7	6.3	5.5	6.5	6.5	6.9	7.3	6.8	5.6	5.5	6.7	7.2	6.5	6.2
180000	5.8	7.1	6.5	6.1	5.4	5.9	6.3	6.7	7.3	6.6	5.5	5.7	6.5	7.2	6.5	6.1
190000	5.8	7.4	6.0	6.1	5.3	5.8	6.4	6.5	7.0	6.9	5.7	5.7	6.4	7.2	6.4	6.1
200000	5.7	7.5	5.7	6.0	5.2	5.9	6.4	6.3	6.8	6.5	5.4	5.4	6.4	7.0	6.5	6.0
210000	5.7	7.4	5.5	5.9	5.3	6.0	6.4	6.6	6.5	6.6	5.3	5.4	6.6	6.6	6.5	6.1
220000	5.7	7.3	5.5	5.9	6.6	6.2	6.5	6.4	6.3	6.9	5.3	5.3	6.7	6.7	6.6	6.2
230000	5.8	7.2	5.5	5.8	6.3	6.1	6.3	6.4	6.3	7.3	5.3	5.4	6.7	6.5	6.6	6.2
Daily Max	6.3	7.5	7.1	6.4	6.6	6.8	6.8	7.3	7.3	7.3	7.4	6.1	6.9	7.3	6.8	6.8
Daily Min	5.7	5.7	5.5	5.6	5.2	5.8	6.3	6.3	6.3	6.3	5.3	5.2	5.4	6.5	6.1	6.0
Average	6.0	6.3	6.3	6.1	5.9	6.4	6.6	6.6	6.9	6.7	6.2	5.6	6.2	7.0	6.5	6.4

Monthly average: 6.3  
 Data missing - equipment retrieval/replacement

High Falls Dissolved Oxygen Summary - July 2008

Time	07/17/08	07/18/08	07/19/08	07/20/08	07/21/08	07/22/08	07/23/08	07/24/08	07/25/08	07/26/08	07/27/08	07/28/08	07/29/08	07/30/08	07/31/08
HHMMSS	0	0	0	0	0	0	0	0	0	0	0	0	0	0	0
10000	6.1	6.2	6.0	5.8	5.6	5.4	5.3	5.5	6.2	7.0	6.5	6.8	6.6	6.9	5.9
20000	6.1	6.2	5.8	5.8	5.6	5.4	5.3	5.6	6.4	6.9	6.7	7.0	6.8	7.1	6.2
30000	6.2	6.1	6.0	6.0	5.5	5.5	5.4	5.7	6.3	6.9	6.6	6.9	6.6	7.1	5.9
40000	6.4	6.9	6.1	6.1	5.9	5.7	5.3	6.4	7.0	7.1	6.9	6.8	6.7	6.4	6.7
50000	6.4	6.5	6.0	6.0	5.9	5.6	5.3	6.3	7.0	6.8	6.5	6.9	6.8	6.2	6.2
60000	6.2	6.2	6.0	6.0	5.8	5.7	5.4	6.4	7.0	6.8	6.7	6.9	7.0	6.0	6.1
70000	6.3	6.3	6.0	6.1	5.8	5.7	5.5	6.5	7.2	6.7	6.9	6.8	7.1	6.2	6.3
80000	6.2	6.6	6.0	6.0	5.7	5.8	5.5	6.4	7.4	7.2	7.3	7.2	7.1	6.1	6.3
90000	6.0	6.3	6.2	6.0	5.9	5.8	5.7	6.4	7.4	7.2	7.1	7.2	7.0	6.2	6.4
100000	6.0	6.3	6.0	5.9	6.0	5.9	5.8	6.5	7.3	7.6	7.3	7.1	7.1	6.6	6.4
110000	6.0	6.6	6.1	5.9	5.9	6.0	6.0	6.6	7.0	7.2	7.5	7.1	7.1	6.4	6.7
120000	6.2	6.6	6.0	5.9	5.9	6.1	5.9	6.5	7.1	7.7	7.3	7.0	7.1	6.3	6.6
130000	6.4	6.7	5.8	5.7	5.6	6.3	6.1	6.5	6.9	7.4	7.3	7.1	6.7	6.4	6.8
140000	6.2	6.9	5.6	5.7	5.6	6.3	5.8	6.1	7.4	7.7	7.2	7.2	7.0	6.3	6.7
150000	6.1	6.6	5.9	5.5	5.7	6.1	5.8	6.3	7.4	7.6	7.2	7.0	6.8	6.5	6.8
160000	6.2	6.8	5.8	5.5	5.7	6.3	6.0	6.0	7.1	7.6	7.2	7.2	6.5	6.6	7.0
170000	5.9	6.8	5.7	5.5	5.8	6.5	5.9	6.1	6.5	7.0	7.1	7.2	6.5	6.3	6.6
180000	6.5	6.6	5.8	5.6	5.8	6.4	5.7	6.4	7.0	7.6	6.5	7.2	6.7	6.1	6.6
190000	6.5	6.1	5.7	5.5	5.7	6.3	5.5	5.9	7.1	7.5	6.5	6.7	6.5	6.3	6.8
200000	6.3	6.0	5.9	6.4	5.6	5.9	5.1	6.0	7.0	7.2	6.4	6.5	6.6	6.2	6.5
210000	6.0	5.9	5.7	5.5	6.4	5.7	5.1	5.9	7.0	7.0	6.4	6.4	6.6	6.0	6.4
220000	6.1	6.0	5.7	5.3	5.4	5.5	5.5	6.1	6.8	6.6	6.4	6.3	6.7	6.1	6.4
230000	6.1	6.1	5.6	5.5	5.4	5.3	5.3	6.0	6.8	6.4	6.6	6.6	6.9	6.0	6.7
Daily Max	6.5	6.9	6.5	6.1	6.0	6.5	6.1	6.6	7.4	7.7	7.5	7.2	7.1	7.1	7.0
Daily Min	5.9	5.9	5.6	5.3	5.4	5.3	5.1	5.5	6.0	6.4	6.4	6.3	6.5	6.0	5.9
Average	6.2	6.4	5.9	5.8	5.7	5.9	5.6	6.2	6.9	7.2	6.9	6.9	6.8	6.4	6.5

Monthly average: 6.3  
 Data missing - equipment retrieval/replacement

High Falls Dissolved Oxygen Summary - August 2008

HHMMSS	08/01/08	08/02/08	08/03/08	08/04/08	08/05/08	08/06/08	08/07/08	08/08/08	08/09/08	08/10/08	08/11/08	08/12/08	08/13/08	08/14/08	08/15/08	08/18/08
0	6.2	6.6	5.9	7.1	6.2	6.4	5.3	7.8	7.8	8.1	8.3	6.1	6.5	6.6	7.0	6.4
10000	6.5	6.7	6.0	7.2	6.1	6.5	5.0	7.8	7.8	8.1	8.3	6.2	6.5	6.5	6.9	6.1
20000	6.7	6.2	5.9	7.2	6.2	6.3	6.0	7.8	7.8	8.2	8.4	6.4	6.6	6.3	6.7	6.4
30000	6.4	6.3	6.0	7.2	6.2	6.3	7.5	7.8	7.8	8.0	8.3	6.5	6.7	6.4	6.3	6.5
40000	6.5	6.0	6.9	6.7	6.7	6.4	7.6	7.6	7.8	8.3	8.4	6.5	6.7	6.7	6.4	6.1
50000	6.6	6.1	6.9	6.6	6.6	6.2	7.8	7.6	7.8	8.3	8.4	6.6	6.9	6.7	6.4	6.4
60000	6.6	6.1	7.0	6.9	6.5	6.3	7.6	7.7	7.8	8.3	8.4	6.6	7.0	6.9	6.5	6.4
70000	6.6	6.0	7.1	6.7	6.7	6.6	7.7	7.8	7.8	8.3	8.4	6.6	7.0	6.9	6.8	6.5
80000	6.7	6.1	7.2	6.6	7.0	6.6	7.7	7.8	7.9	8.4	8.5	6.9	7.1	7.3	6.8	6.4
90000	6.3	6.3	7.2	6.8	6.9	8.0	7.7	7.8	7.9	8.4	8.9	7.0	7.2	7.4	6.9	6.4
100000	6.1	6.4	7.1	6.7	7.0	8.0	7.8	7.8	8.1	8.4	8.8	7.1	7.2	7.7	7.1	6.8
110000	6.6	6.6	7.1	6.9	7.1	7.1	7.8	7.9	8.1	8.4	8.8	7.2	7.2	7.7	7.3	6.7
120000	6.3	6.6	7.1	6.5	7.0	5.3	7.8	7.9	8.2	8.4	7.0	7.2	7.2	7.7	7.2	6.9
130000	6.4	6.7	7.4	6.5	7.1	5.8	7.8	7.9	8.0	8.4	7.1	7.2	7.1	7.6	7.2	7.1
140000	6.3	6.5	7.4	6.7	6.9	5.9	7.8	8.2	8.2	8.4	6.7	7.2	7.1	7.6	7.4	7.0
150000	6.4	6.6	7.2	6.5	5.3	5.8	7.8	7.9	8.2	8.4	6.9	7.1	7.1	7.6	7.4	7.0
160000	6.5	6.8	7.3	6.5	5.3	5.8	7.7	7.9	8.2	8.4	7.1	7.1	7.3	7.7	7.3	6.9
170000	6.3	6.8	7.0	6.4	5.7	5.8	7.8	7.9	8.1	8.4	6.1	6.8	7.3	7.7	7.2	6.9
180000	6.3	6.6	6.8	6.4	5.5	5.8	7.9	7.8	8.1	8.3	6.1	6.8	7.2	7.5	7.1	6.5
190000	6.4	6.3	6.9	6.5	6.9	5.5	7.9	7.8	8.2	8.3	6.1	6.8	7.2	7.3	6.9	6.4
200000	6.4	6.1	6.8	6.2	6.3	5.4	7.7	7.6	8.1	8.2	6.1	6.4	7.1	7.4	6.9	6.3
210000	6.6	6.0	6.7	6.3	6.1	5.4	7.8	7.7	8.1	8.3	6.2	6.4	6.9	7.2	6.8	6.3
220000	6.5	5.9	6.9	6.3	6.2	5.2	7.8	7.8	8.2	8.3	6.1	6.2	6.8	7.2	6.7	6.2
230000	6.6	5.9	7.1	6.2	6.3	5.3	7.8	7.8	8.0	8.3	6.1	6.4	6.7	7.1	6.4	6.1
Daily Max	6.7	6.8	7.4	7.2	7.1	8.0	7.9	7.9	8.2	8.4	8.5	7.2	7.3	7.7	7.4	7.1
Daily Min	6.1	5.9	5.9	6.2	5.3	5.2	5.0	7.6	7.8	8.0	6.1	6.1	6.5	6.3	6.3	6.1
Average	6.4	6.3	6.9	6.6	6.4	6.1	7.4	7.8	8.0	8.3	7.2	6.7	7.0	7.2	6.9	6.5

Monthly average: 7.5  
 Missing data due to equipment change  
 No data - Equipment failure

High Falls Disolved Oxygen Summary - August 2008

H-HMMSS	08/17/08	08/18/08	08/19/08	08/20/08	08/21/08	08/22/08	08/23/08	08/24/08	08/25/08	08/26/08	08/27/08	08/28/08	08/29/08	08/30/08	08/31/08
0	6.3	6.0	7.4	6.2	6.2	8.4	8.6	8.6	8.7	8.9	8.9	8.9	8.4	8.5	8.5
10000	6.2	6.1	7.5	6.4	6.3	8.5	8.6	8.6	8.7	8.9	8.8	8.9	8.4	8.5	8.5
20000	6.1	6.0	7.6	6.6	6.2	8.5	8.6	8.6	8.7	8.9	8.9	8.9	8.4	8.5	8.5
30000	6.1	6.0	7.6	6.5	6.3	8.4	8.6	8.6	8.8	8.9	8.9	8.9	8.4	8.5	8.6
40000	6.2	6.0	7.5	6.4	7.3	8.4	8.6	8.6	8.8	8.9	8.9	8.9	8.4	8.5	8.5
50000	6.2	5.8	7.5	6.5	6.9	8.4	8.6	8.6	8.8	8.9	8.9	8.9	8.5	8.5	8.6
60000	6.3	5.8	7.5	6.7	7.4	8.5	8.6	8.6	8.8	8.9	8.9	8.9	8.5	8.6	8.6
70000	6.2	7.3	7.3	6.9	7.4	8.5	8.6	8.7	8.8	9.0	8.9	9.0	8.5	8.6	8.6
80000	6.6	7.4	7.4	6.9	7.5	8.5	8.6	8.7	8.9	9.0	9.0	9.0	8.6	8.6	8.6
90000	6.5	7.6	7.6	7.0	7.7	8.6	8.7	8.7	8.9	9.0	9.0	9.0	8.6	8.6	8.6
100000	6.5	7.5	7.5	7.0	8.1	8.6	8.7	8.8	8.9	9.0	9.0	9.0	8.8	8.8	8.8
110000	7.0	7.2	7.0	6.9	7.8	8.6	8.7	8.8	8.9	9.0	9.0	9.0	8.6	8.6	8.6
120000	7.0	7.3	7.0	7.0	7.8	8.7	8.7	8.8	8.9	9.0	9.0	9.0	8.5	8.6	8.6
130000	7.2	7.2	6.8	6.9	7.7	8.7	8.7	8.7	8.9	9.0	9.0	9.0	8.5	8.6	8.6
140000	7.3	6.9	6.9	6.9	7.8	8.6	8.7	8.8	8.9	9.0	9.0	9.0	8.5	8.5	8.6
150000	7.1	7.1	6.9	6.9	6.7	8.6	8.7	8.7	8.9	9.0	9.0	9.0	8.5	8.5	8.6
160000	7.0	6.8	6.6	6.6	6.4	8.7	8.8	8.7	8.9	9.0	9.0	9.0	8.5	8.5	8.6
170000	6.8	6.9	6.6	6.5	6.1	8.2	8.6	8.6	8.8	9.0	8.7	8.9	8.4	8.5	8.6
180000	6.8	6.9	6.5	6.5	5.8	8.5	8.6	8.7	8.9	8.9	8.7	8.9	8.4	8.5	8.6
190000	6.2	6.8	6.4	6.2	5.8	8.6	8.6	8.6	8.9	8.9	8.6	8.9	8.4	8.5	8.5
200000	6.1	6.9	6.3	6.0	6.4	8.6	8.5	8.6	8.8	8.8	8.5	8.8	8.4	8.5	8.5
210000	6.0	6.6	6.1	6.0	6.4	8.6	8.5	8.6	8.8	8.9	8.8	8.9	8.4	8.5	8.5
220000	5.9	7.1	6.3	6.1	6.4	8.6	8.5	8.7	8.9	8.8	8.8	8.8	8.4	8.5	8.5
230000	5.9	7.4	6.1	6.2	6.4	8.6	8.5	8.7	8.9	8.8	8.8	8.8	8.4	8.5	8.5
Daily Max	7.3	7.6	7.6	7.0	8.4	8.7	8.7	8.8	8.9	9.0	9.0	9.0	8.6	8.6	8.6
Daily Min	5.9	5.8	6.1	6.0	5.8	8.2	8.5	8.6	8.7	8.8	8.5	8.8	8.4	8.5	8.5
Average	6.5	6.8	7.0	6.6	7.2	8.5	8.6	8.7	8.8	8.9	8.9	8.9	8.5	8.5	8.6

Monthly average: 7.5  
 Missing data due to equipment change  
 No data - Equipment failure

High Falls Dissolved Oxygen Summary - September 2008

Time	09/01/08	09/02/08	09/03/08	09/04/08	09/05/08	09/06/08	09/07/08	09/08/08	09/09/08	09/10/08	09/11/08	09/12/08	09/13/08	09/14/08	09/15/08	09/16/08
HHMMSS	0	0	0	0	0	0	0	0	0	0	0	0	0	0	0	0
10000	8.5	8.5	8.3	8.4	7.9	7.6	7.6	7.6	7.9	8.0	8.0	7.5	7.8	7.9	8.1	8.2
20000	8.5	8.5	8.2	8.3	7.9	7.6	7.7	7.8	8.1	8.1	7.9	7.4	7.7	8.0	8.1	8.2
30000	8.5	8.5	8.3	8.4	7.9	7.5	7.6	7.8	8.1	8.1	7.9	7.4	7.7	8.0	8.1	8.2
40000	8.5	8.5	8.2	8.4	7.9	7.5	7.9	8.0	8.0	8.1	7.7	7.4	7.7	8.1	8.1	8.2
50000	8.5	8.5	8.3	8.4	7.8	7.6	7.8	8.0	8.1	8.1	7.8	7.5	7.7	8.0	8.1	8.2
60000	8.5	8.5	8.3	8.5	7.8	7.5	7.9	8.1	8.1	8.1	7.7	7.5	7.7	8.0	8.1	8.2
70000	8.5	8.5	8.4	8.6	7.8	7.4	7.9	8.1	8.1	8.2	7.9	7.6	7.8	8.0	8.1	8.2
80000	8.6	8.5	8.4	8.6	7.9	7.5	8.0	8.2	8.2	8.3	8.0	7.6	7.9	8.0	8.1	8.2
90000	8.6	8.5	8.5	8.5	8.0	7.7	8.2	8.4	8.4	8.4	7.9	7.8	7.9	8.1	8.2	8.3
100000	8.6	8.6	8.6	8.5	8.0	7.7	8.3	8.4	8.5	8.5	8.0	7.9	8.0	8.1	8.2	8.3
110000	8.6	8.5	8.6	8.5	8.1	7.8	8.4	8.6	8.7	8.5	8.1	8.0	8.0	8.2	8.3	8.4
120000	8.6	8.6	8.6	8.5	8.1	7.8	8.4	8.6	8.7	8.5	8.3	8.2	8.1	8.2	8.3	8.4
130000	8.6	8.5	8.6	8.4	8.1	7.7	8.4	8.6	8.6	8.5	8.4	8.2	8.1	8.2	8.3	8.4
140000	8.7	8.5	8.6	8.5	8.1	7.6	8.4	8.6	8.6	8.5	7.5	8.1	8.1	8.2	8.3	8.4
150000	8.7	8.5	8.5	8.5	8.0	7.7	8.4	8.5	8.7	8.5	7.4	8.1	8.1	8.2	8.3	8.4
160000	8.7	8.5	8.5	8.5	7.9	7.8	8.3	8.4	8.5	8.4	7.5	8.0	8.1	8.2	8.3	8.4
170000	8.7	8.4	8.5	8.2	8.0	7.9	8.2	8.5	8.5	8.4	7.5	8.0	8.1	8.2	8.3	8.4
180000	8.7	8.4	8.5	8.0	8.0	7.8	8.2	8.4	8.4	8.2	7.5	7.9	8.0	8.1	8.2	8.3
190000	8.6	8.4	8.4	8.0	7.9	7.8	8.0	8.4	8.3	8.1	7.5	7.9	8.0	8.1	8.2	8.3
190000	8.6	8.4	8.3	8.0	7.7	7.6	8.0	8.3	8.3	8.1	7.5	7.8	7.9	8.1	8.2	8.3
200000	8.6	8.3	8.3	8.0	7.6	7.6	8.0	8.0	8.1	8.1	7.5	7.6	7.9	8.1	8.2	8.3
210000	8.6	8.3	8.4	8.0	7.6	7.6	7.9	8.1	8.2	7.9	7.5	7.8	7.9	8.1	8.2	8.2
220000	8.5	8.2	8.4	7.9	7.6	7.6	8.0	8.0	8.2	8.0	7.5	7.8	7.9	8.1	8.2	8.3
230000	8.6	8.3	8.4	7.9	7.5	7.6	7.9	8.0	8.2	8.1	7.5	7.6	7.9	8.1	8.2	8.3
Daily Max	8.7	8.6	8.6	8.6	8.1	7.9	8.4	8.6	8.7	8.5	8.4	8.2	8.2	8.4	8.6	8.5
Daily Min	8.5	8.2	8.2	7.9	7.5	7.4	7.6	7.6	8.0	7.8	7.4	7.4	7.7	7.9	8.1	8.2
Average	8.6	8.5	8.4	8.3	7.9	7.6	8.0	8.2	8.3	8.2	7.8	7.8	7.9	8.1	8.3	8.3

Monthly average: 8.2  
 Missing data due to equipment change

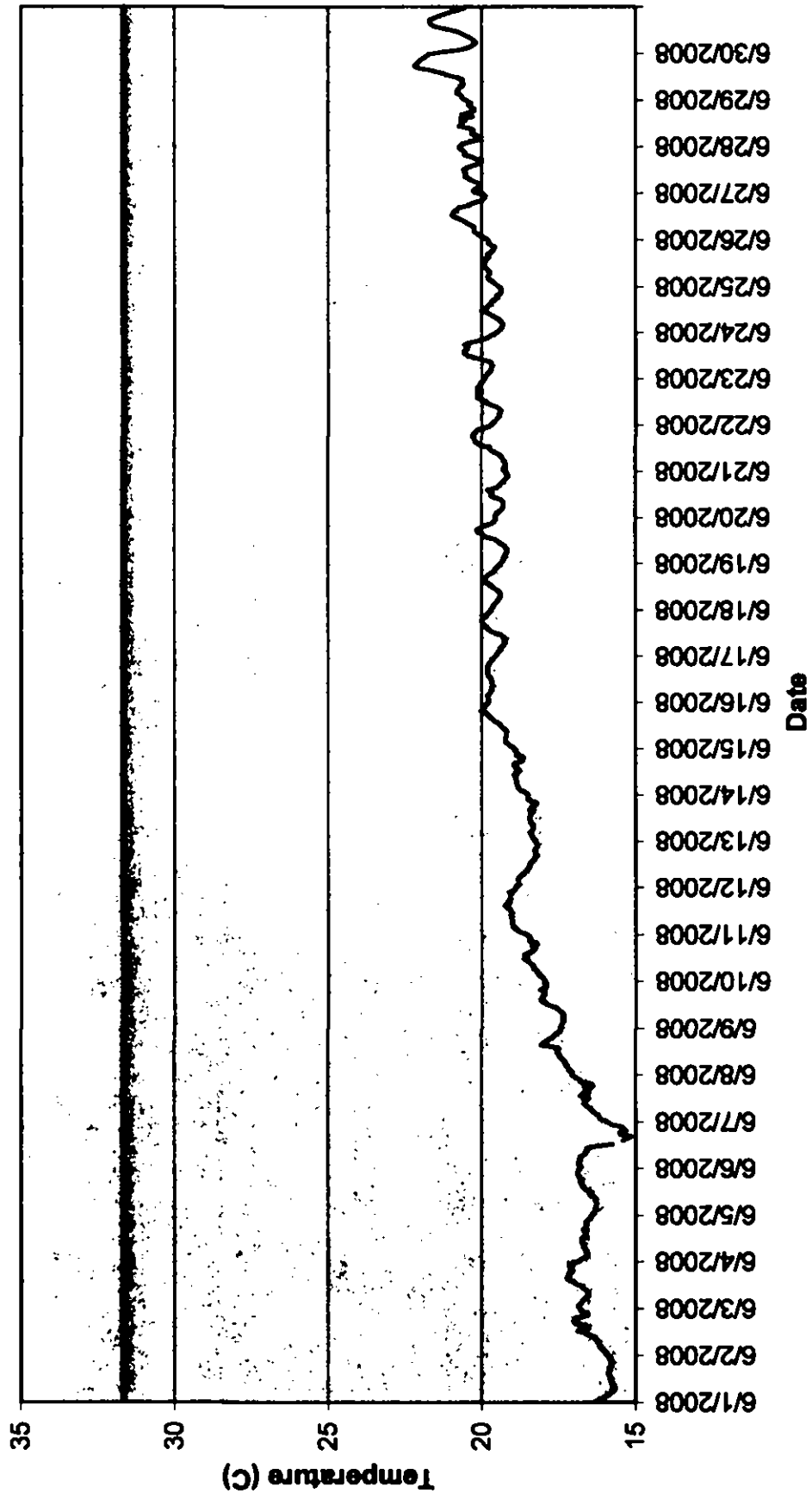
High Falls Dissolved Oxygen Summary - September 2008

Time	08/17/08	08/18/08	08/19/08	08/20/08	08/21/08	08/22/08	08/23/08	08/24/08	08/25/08	08/26/08	08/27/08	08/28/08	08/29/08	08/30/08
0	8.3	8.5	7.5	7.3	8.1	8.1	7.8	7.2	7.4	8.1	7.9	8.6	8.4	8.0
10000	8.3	8.5	7.5	7.3	8.1	8.1	7.8	7.2	7.4	8.1	7.9	8.6	8.4	8.0
20000	8.2	8.5	7.6	7.3	8.1	8.0	7.8	7.2	7.5	8.1	8.0	8.5	8.4	8.0
30000	8.2	8.5	7.6	7.3	8.2	8.0	7.8	7.2	7.6	8.2	8.0	8.5	8.4	8.0
40000	8.1	8.7	7.6	7.3	8.2	8.1	7.8	7.2	7.7	8.4	7.9	8.5	8.2	8.1
50000	8.1	8.7	7.7	7.2	8.2	8.2	8.0	7.1	7.8	8.4	8.0	8.4	8.1	8.1
60000	8.1	8.7	7.6	7.3	8.3	8.2	8.1	7.1	7.9	8.5	8.0	8.5	8.1	8.1
70000	8.0	8.7	7.6	7.3	8.3	8.1	8.2	7.2	8.0	8.5	8.1	8.4	8.1	8.1
80000	8.2	8.7	7.6	7.4	8.4	8.2	8.3	7.2	8.0	8.6	8.2	8.4	8.1	8.2
90000	8.4	8.9	7.6	7.6	8.4	8.3	8.4	7.3	8.2	8.7	8.4	8.5	8.2	8.3
100000	8.6	9.0	7.6	7.7	8.6	8.3	8.6	7.6	8.5	8.8	8.5	8.5	8.3	8.5
110000	8.8		7.6	7.8	8.6	8.4	8.7	7.8	8.6	8.9	8.5	8.6	8.3	8.7
120000	8.9	8.3	7.6	8.2	8.8	8.3	8.7	8.0	8.7	8.8	8.5	8.7	8.3	8.6
130000	8.8	8.3	7.6	8.5	8.9	8.3	8.5	8.2	8.7	8.7	8.6	8.7	8.4	8.6
140000	8.9	8.1	7.7	8.6	8.9	8.4	8.3	8.2	8.6	8.6	8.7	8.7	8.5	8.7
150000	8.9	8.1	7.8	8.4	9.0	8.3	8.2	8.2	8.6	8.4	8.6	8.7	8.5	8.6
160000	8.9	8.0	7.8	8.2	9.0	8.4	8.2	8.3	8.6	8.4	8.9	8.7	8.5	8.7
170000	8.8	7.9	7.7	8.0	9.0	8.3	8.0	8.2	8.6	8.4	8.9	8.6	8.4	8.6
180000	8.8	7.7	7.6	8.0	8.7	8.1	7.9	7.9	8.3	8.3	8.8	8.6	8.4	8.5
190000	8.6	7.6	7.5	8.0	8.5	7.9	7.7	7.8	8.1	8.2	8.7	8.5	8.2	8.4
200000	8.5	7.6	7.5	7.9	8.3	7.8	7.6	7.8	8.1	8.2	8.7	8.5	8.1	8.4
210000	8.5	7.6	7.5	7.9	8.2	7.8	7.6	7.7	8.0	8.2	8.6	8.5	8.1	8.3
220000	8.5	7.6	7.5	7.9	8.2	7.8	7.6	7.6	8.0	8.1	8.6	8.5	8.1	8.3
230000	8.5	7.5	7.4	8.0	8.1	7.8	7.4	7.5	8.1	8.0	8.6	8.4	8.1	8.2
Daily Max	8.9	9.0	7.8	8.6	9.0	8.4	8.7	8.3	8.7	8.9	8.9	8.7	8.5	8.7
Daily Min	8.0	7.5	7.4	7.2	8.1	7.8	7.4	7.1	7.4	8.0	7.9	8.4	8.1	8.0
Average	8.5	8.2	7.6	7.8	8.5	8.1	8.0	7.6	8.1	8.4	8.4	8.5	8.3	8.3

Monthly average: 8.2  
 Missing data due to equipment change

### High Falls Temperature Monitoring - June 2008

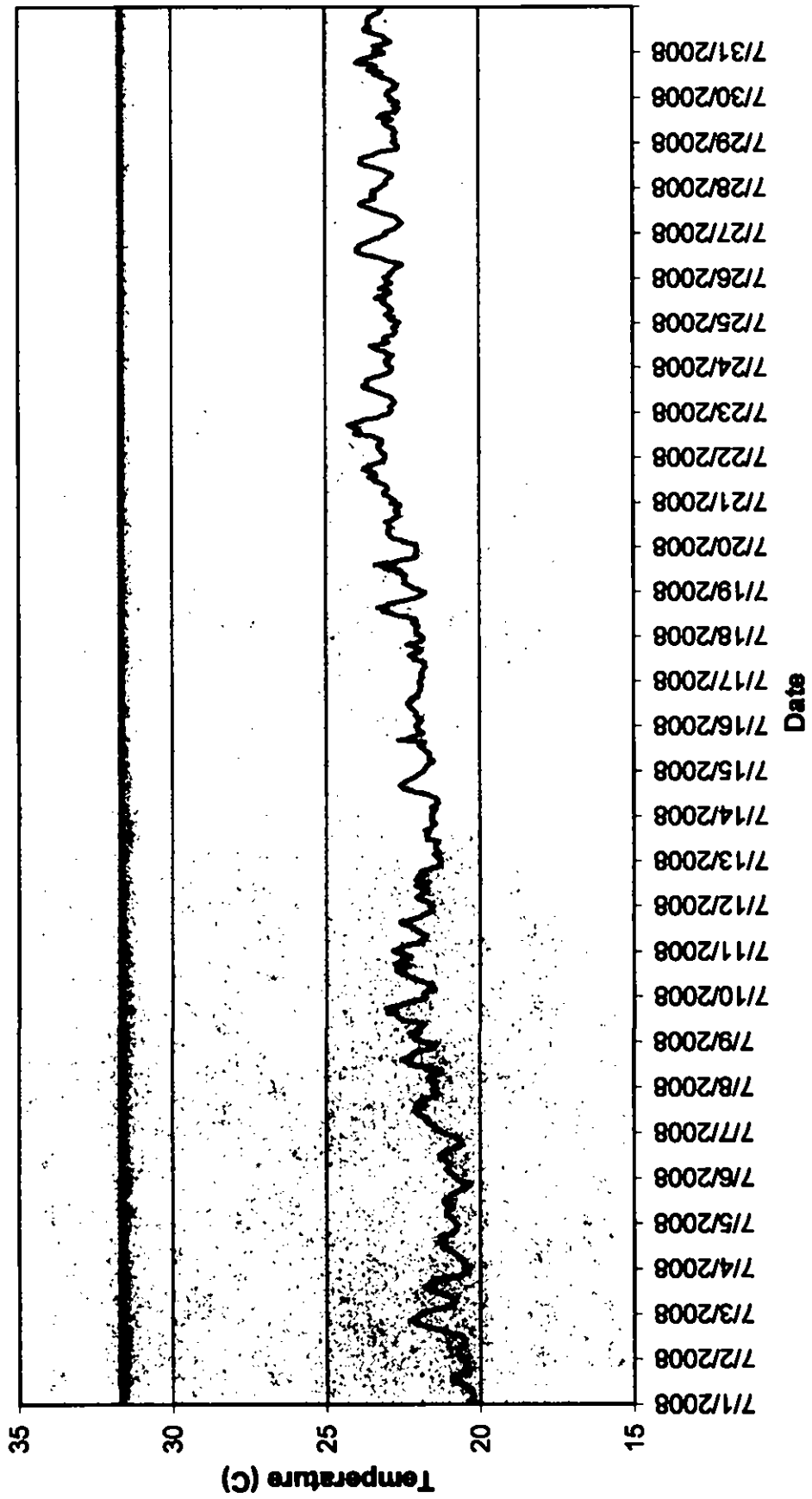
— June      — License Maximum Monthly Average





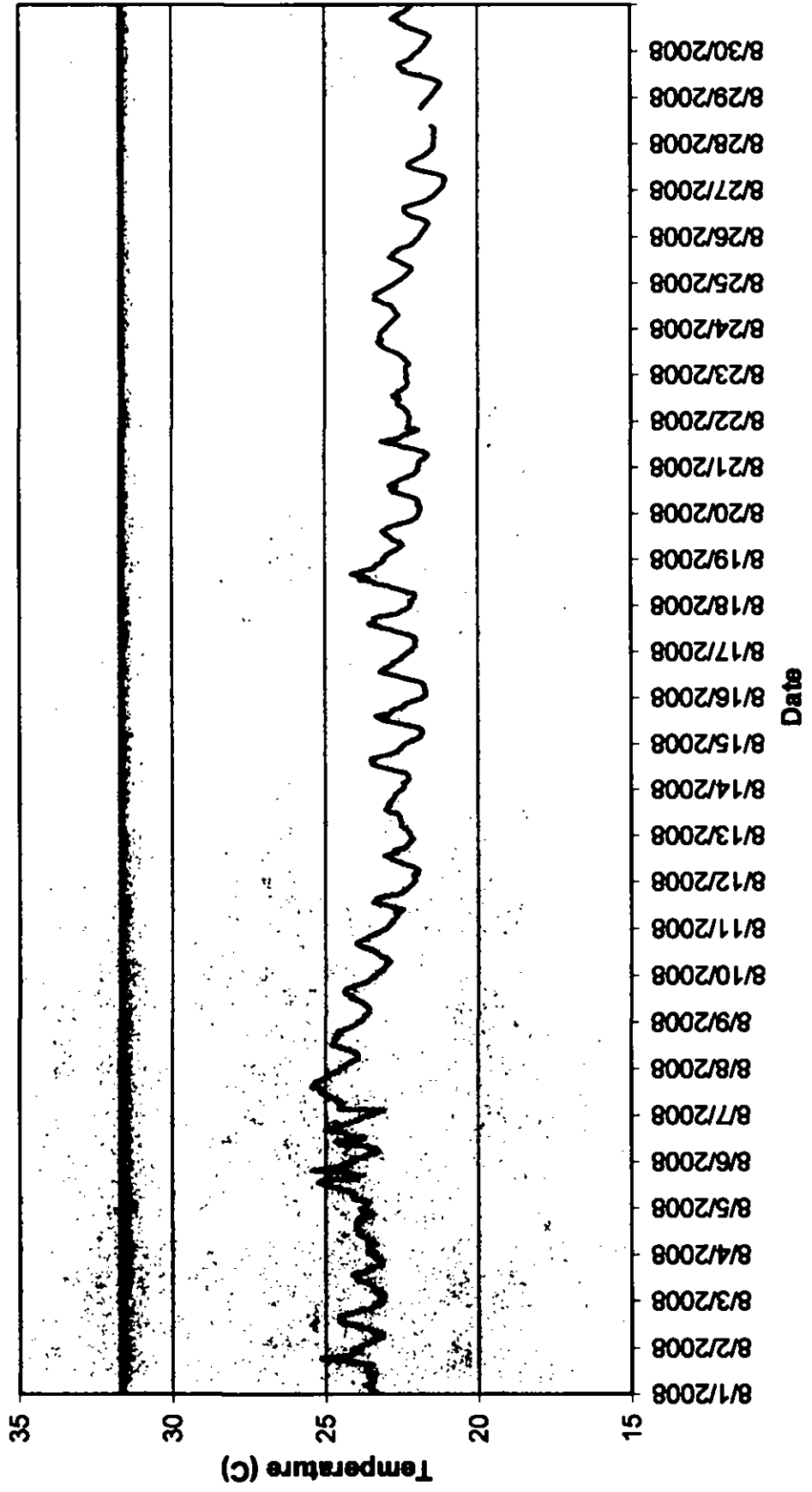
### High Falls Temperature Monitoring - July 2008

— July      — License Maximum Monthly Average



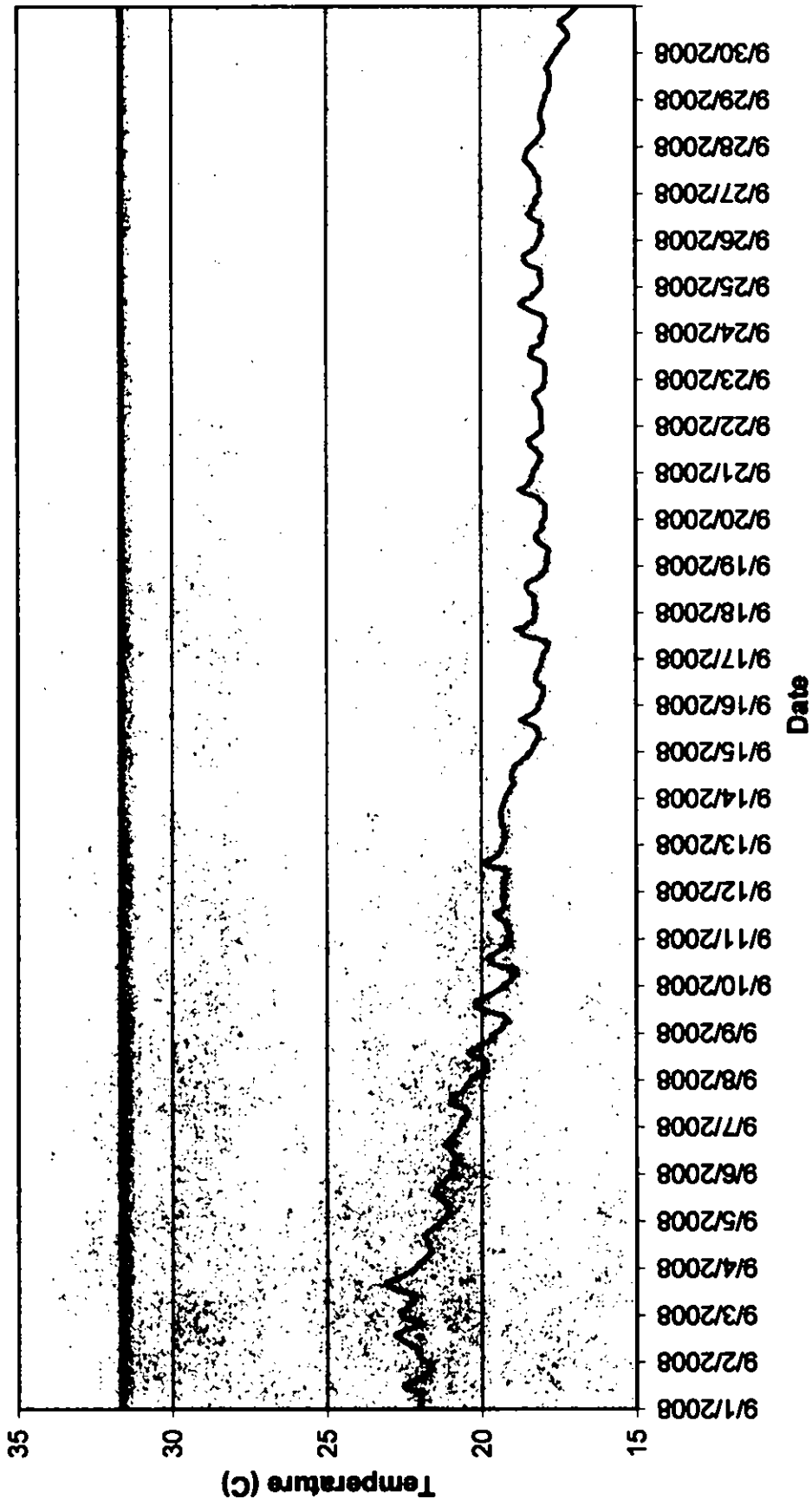
### High Falls Temperature Monitoring - August 2008

— August      — License Maximum Monthly Average



### High Falls Temperature Monitoring - September 2008

— September — License Maximum Monthly Average



High Falls Temperature Monitoring - June 2008

Time	06/01/08	06/02/08	06/03/08	06/04/08	06/05/08	06/06/08	06/07/08	06/08/08	06/09/08	06/10/08	06/11/08	06/12/08	06/13/08	06/14/08	06/15/08	06/16/08
HHMMSS	0	16.28	15.82	16.83	16.80	16.39	16.78	15.99	17.07	17.46	17.97	18.90	18.27	16.50	16.95	19.77
10000	16.19	15.96	16.85	16.74	16.33	16.81	16.16	17.06	17.44	17.99	18.78	18.78	18.33	16.60	19.10	19.77
20000	16.05	16.00	16.77	16.58	16.29	16.86	16.17	17.16	17.40	18.06	18.86	18.81	18.37	16.76	19.15	19.78
30000	15.91	16.12	16.74	16.53	16.28	16.83	16.22	17.18	17.36	18.12	18.96	18.61	18.40	16.80	19.23	19.82
40000	15.84	16.13	16.71	16.57	16.28	16.83	16.32	17.22	17.35	18.20	18.99	18.82	18.44	16.82	19.22	19.76
50000	15.75	16.19	16.61	16.61	16.25	16.79	16.39	17.28	17.38	18.22	19.00	18.79	18.37	16.85	19.23	19.71
60000	15.68	16.19	16.54	16.63	16.25	16.73	16.47	17.29	17.34	18.29	19.01	18.72	18.32	16.87	19.21	19.65
70000	15.66	16.23	16.51	16.68	16.27	16.63	16.52	17.32	17.36	18.32	19.05	18.63	18.33	16.88	19.21	19.68
80000	15.68	16.31	16.53	16.53	16.29	16.62	16.61	17.42	17.44	18.36	19.05	18.57	18.33	16.89	19.18	19.65
90000	15.74	16.37	16.80	16.73	16.35	16.53	16.68	17.45	17.51	18.44	19.04	18.49	18.41	16.89	19.19	19.65
100000	15.78	16.53	16.72	16.75	16.50	16.57	16.66	17.46	17.61	18.49	19.03	18.47	18.44	16.95	19.29	19.68
110000	15.83	16.62	16.66	16.69	16.41	16.25	16.56	17.55	17.78	18.64	19.04	18.46	18.44	16.89	19.36	19.68
120000	15.82	16.88	16.94	16.71	16.53	15.75	16.53	17.54	17.83	18.64	19.08	18.42	18.44	16.75	19.38	19.69
130000	15.84	16.80	16.98	16.59	16.64	15.40	16.80	17.47	18.03	18.62	19.16	18.38	18.41	16.88	19.46	19.78
140000	15.89	16.50	17.16	16.60	16.69	15.40	16.69	17.70	18.06	18.51	19.25	18.30	18.43	16.89	19.61	19.78
150000	15.86	16.62	17.22	16.64	16.72	15.29	16.49	18.06	18.04	18.38	19.17	18.28	18.31	16.98	19.64	19.82
160000	15.83	16.97	17.18	16.70	16.77	15.15	16.64	18.01	18.00	18.27	19.15	18.18	18.46	16.93	19.73	19.81
170000	15.89	17.01	17.17	16.59	16.80	15.48	16.89	17.90	17.99	18.32	19.08	18.28	18.37	16.67	19.79	19.81
180000	15.77	17.01	17.14	16.59	16.78	15.52	16.87	17.81	17.88	18.38	19.07	18.25	18.34	16.74	19.85	19.82
190000	15.77	17.01	17.06	16.59	16.83	15.30	16.42	17.87	18.11	18.21	19.08	18.26	18.20	16.63	20.03	19.78
200000	15.80	16.58	17.05	16.62	16.87	15.42	16.77	17.83	17.85	18.44	19.05	18.23	18.31	16.88	19.99	19.75
210000	15.78	16.54	17.15	16.52	16.87	15.44	16.82	17.57	17.82	18.46	19.11	18.18	18.51	16.89	19.96	19.70
220000	15.84	16.76	17.15	16.44	16.86	15.78	16.91	17.44	17.90	18.41	18.97	18.21	18.50	16.98	19.99	19.67
230000	15.86	16.78	16.89	16.44	16.83	15.85	17.04	17.43	17.84	18.47	18.90	18.23	18.50	16.92	19.81	19.58
Daily Max	16.28	17.01	17.22	16.60	16.87	16.86	17.04	18.06	18.11	18.64	19.25	18.90	18.51	16.98	20.03	19.82
Daily Min	15.86	15.92	16.51	16.44	16.25	15.15	15.99	17.07	17.34	17.97	18.59	18.18	18.20	16.50	16.95	19.58
Average	15.85	16.50	16.89	16.63	16.54	16.11	16.54	17.49	17.72	18.34	19.02	18.46	18.39	16.82	19.48	19.73

Monthly average: 18.77

License Maximum Monthly Average: 31.67

Data missing - equipment retrieval/replacement

High Falls Temperature Monitoring - June 2008

Time	06/17/08	06/18/08	06/19/08	06/20/08	06/21/08	06/22/08	06/23/08	06/24/08	06/25/08	06/26/08	06/27/08	06/28/08	06/29/08	06/30/08
0	19.53	19.58	19.36	19.57	19.28	19.57	19.81	19.45	19.48	19.82	20.21	20.69	20.58	21.35
10000	19.49	19.84	19.31	19.54	19.30	19.63	19.85	19.41	19.56	19.93	20.28	20.60	20.64	20.79
20000	19.45	19.81	19.28	19.49	19.21	19.56	19.82	19.34	19.65	20.07	20.18	20.36	20.68	20.52
30000	19.37	19.57	19.26	19.41	19.22	19.50	19.75	19.33	19.73	20.18	20.08	20.10	20.81	20.35
40000	19.36	19.49	19.23	19.33	19.24	19.43	19.69	19.32	19.81	20.27	20.05	20.18	20.81	20.27
50000	19.30	19.45	19.21	19.30	19.27	19.47	19.68	19.37	19.80	20.27	20.16	20.13	20.77	20.19
60000	19.26	19.41	19.16	19.28	19.31	19.41	19.66	19.42	19.76	20.24	20.31	20.33	20.72	20.27
70000	19.21	19.37	19.17	19.29	19.37	19.39	19.70	19.50	19.74	20.33	20.41	20.31	20.62	20.32
80000	19.22	19.39	19.23	19.32	19.40	19.43	19.70	19.62	19.81	20.46	20.54	20.26	20.60	20.45
90000	19.25	19.43	19.27	19.39	19.53	19.51	19.83	19.73	19.86	20.56	20.53	20.43	20.84	20.56
100000	19.33	19.52	19.38	19.59	19.67	19.70	20.16	19.82	19.89	20.69	20.53	20.73	20.81	20.69
110000	19.45	19.60	19.48	19.70	19.74	19.85	20.43	20.02	19.88	20.87	20.59	20.65	20.73	20.89
120000	19.63	19.89	19.56	19.63	19.71	19.87	20.53	19.96	19.93	20.97	20.58	20.69	21.02	21.12
130000	19.76	19.77	19.83	19.73	20.03	20.03	20.60	19.83	19.98	20.94	20.44	20.54	21.21	21.46
140000	19.81	19.94	19.95	19.81	20.13	20.16	20.57	19.77	19.82	20.91	20.21	20.69	21.45	21.61
150000	19.85	19.82	19.99	19.52	20.22	20.16	20.48	19.69	19.76	20.80	20.08	20.29	21.69	21.67
160000	19.86	19.89	20.15	19.43	20.21	20.04	20.45	19.69	19.83	20.76	20.00	20.66	22.07	21.71
170000	19.97	19.83	20.15	19.38	20.26	20.16	20.58	19.60	19.78	20.46	20.15	22.18	21.69	21.69
180000	19.99	19.75	20.04	19.33	20.31	20.15	20.42	19.46	19.63	20.35	20.30	20.24	22.16	21.52
190000	19.98	19.64	19.92	19.27	20.27	20.16	20.15	19.53	19.62	20.18	20.56	20.24	22.06	21.39
200000	19.88	19.59	19.73	19.20	20.20	20.09	19.93	19.39	19.58	19.97	20.53	20.36	22.02	21.18
210000	19.83	19.54	19.60	19.12	20.15	20.07	19.78	19.37	19.69	19.83	20.58	20.45	21.90	21.00
220000	19.79	19.48	19.56	19.18	19.92	20.00	19.69	19.36	19.80	19.87	20.87	20.34	21.81	20.75
230000	19.72	19.41	19.54	19.17	19.74	19.93	19.59	19.39	19.78	19.96	20.74	20.46	21.73	20.56
Daily Max	19.99	19.94	20.15	19.81	20.31	20.16	20.60	20.02	19.98	20.97	20.74	20.73	22.18	21.71
Daily Min	19.21	19.37	19.16	19.12	19.21	19.39	19.59	19.32	19.48	19.82	20.00	20.10	20.58	20.19
Average	19.60	19.61	19.56	19.42	19.74	19.81	20.04	19.56	19.76	20.37	20.36	20.42	21.23	20.93

Monthly average: 20.03  
 License Maximum Monthly Average: 31.67

Data missing - equipment retrieval/replacement

High Falls Temperature Monitoring - July 2008

Time	07/01/08	07/02/08	07/03/08	07/04/08	07/05/08	07/06/08	07/07/08	07/08/08	07/09/08	07/10/08	07/11/08	07/12/08	07/13/08	07/14/08	07/15/08	07/16/08
HHMMSS	07/01/08	07/02/08	07/03/08	07/04/08	07/05/08	07/06/08	07/07/08	07/08/08	07/09/08	07/10/08	07/11/08	07/12/08	07/13/08	07/14/08	07/15/08	07/16/08
0	20.42	20.55	21.74	20.44	20.61	20.87	21.22	21.49	22.00	21.82	22.84	21.59	21.30	21.58	21.82	22.10
10000	20.33	20.60	21.74	20.46	20.87	20.82	21.37	21.54	22.14	21.86	22.67	21.84	21.35	21.56	21.79	21.97
20000	20.29	20.69	21.43	20.50	20.93	20.99	21.46	21.43	22.11	21.70	22.57	21.85	21.41	21.51	21.72	21.94
30000	20.23	20.78	21.13	20.48	21.01	21.03	21.48	21.69	22.21	21.45	22.37	22.01	21.49	21.43	21.66	21.90
40000	20.23	20.75	20.96	20.58	21.07	21.09	21.81	21.69	22.30	21.68	21.85	22.08	21.37	21.58	21.56	22.04
50000	20.23	20.71	20.88	20.68	21.06	21.03	21.73	21.60	22.13	21.54	21.98	21.96	21.39	21.50	21.50	22.08
60000	20.26	20.52	20.79	20.73	21.04	20.98	21.78	21.46	21.93	21.54	21.85	21.87	21.44	21.37	21.66	22.06
70000	20.30	20.67	20.82	20.78	21.00	21.01	21.74	21.25	22.03	21.83	21.78	21.71	21.44	21.37	21.64	22.08
80000	20.40	20.51	20.88	20.85	20.98	21.06	21.83	21.40	21.87	22.03	21.73	21.79	21.41	21.36	21.64	22.15
90000	20.53	20.53	21.07	20.98	21.03	21.16	22.00	21.49	21.79	22.19	21.91	21.92	21.43	21.44	21.65	22.24
100000	20.59	20.51	21.25	21.11	21.15	21.32	22.08	21.74	22.16	22.30	22.02	22.09	21.37	21.60	21.76	22.28
110000	20.89	20.56	21.43	21.26	21.19	21.21	22.16	22.20	22.55	22.45	22.09	21.71	21.73	21.73	21.81	22.34
120000	20.94	20.65	21.63	21.13	21.17	21.34	22.06	22.22	22.63	22.52	22.24	21.87	21.68	22.10	21.87	22.37
130000	20.86	20.93	21.79	21.29	21.01	21.06	21.81	22.40	22.69	22.71	22.22	22.10	21.75	22.25	21.99	22.19
140000	20.94	21.03	21.82	21.11	20.97	21.15	22.10	22.57	22.71	22.74	22.82	22.04	21.72	22.50	21.96	22.26
150000	20.86	21.25	21.71	21.30	20.90	20.94	22.01	22.41	23.03	22.65	22.60	22.02	21.65	22.52	21.78	22.00
160000	20.88	21.53	21.44	21.27	20.83	20.75	21.86	22.22	22.97	22.27	22.28	21.81	21.80	22.60	22.66	22.07
170000	20.57	21.83	21.60	21.32	20.64	20.61	21.92	22.21	23.07	22.79	22.08	21.82	21.61	22.47	22.25	21.99
180000	20.40	21.91	21.39	20.96	20.57	20.61	21.58	22.11	22.84	22.47	21.89	21.90	21.66	22.42	22.11	21.97
190000	20.47	22.14	20.83	20.91	20.46	20.69	21.39	21.77	22.55	22.57	21.83	21.66	21.46	22.29	21.99	21.95
200000	20.44	22.24	20.62	20.80	20.34	20.68	21.45	21.61	22.47	22.30	21.68	21.49	21.52	22.15	21.84	21.93
210000	20.40	22.18	20.44	20.75	20.39	20.73	21.41	21.52	22.15	22.35	21.55	21.26	21.57	22.07	22.02	21.89
220000	20.47	22.06	20.38	20.76	20.68	20.90	21.57	21.40	21.87	22.50	21.54	21.33	21.55	21.98	21.99	21.96
230000	20.50	21.97	20.39	20.79	20.74	21.17	21.41	21.68	21.76	22.76	21.58	21.25	21.96	21.86	22.06	21.99
Daily Max	20.94	22.24	21.86	21.32	21.19	21.34	22.16	22.57	23.07	22.79	22.94	22.10	21.80	22.60	22.66	22.37
Daily Min	20.23	20.51	20.38	20.44	20.34	20.61	21.22	21.25	21.75	21.45	21.54	21.25	21.30	21.36	21.50	21.89
Average	20.49	21.13	21.18	20.89	20.87	20.97	21.71	21.80	22.33	22.21	22.07	21.78	21.52	21.89	21.86	22.07

Monthly average: 22.22  
 License Maximum Monthly Average: 31.67  
 Data missing - equipment retrieval/replacement

High Falls Temperature Monitoring - July 2008

Time	07/17/08	07/18/08	07/19/08	07/20/08	07/21/08	07/22/08	07/23/08	07/24/08	07/25/08	07/26/08	07/27/08	07/28/08	07/29/08	07/30/08	07/31/08
HI-MAXSS	21.94	21.94	21.91	22.04	22.71	23.08	22.88	22.90	22.57	23.09	23.06	23.20	22.80	22.90	23.40
0	21.87	22.07	22.12	22.07	22.80	23.08	22.84	23.00	22.83	22.69	22.88	23.10	22.71	23.00	23.19
10000	21.89	22.02	22.23	22.47	22.88	23.14	22.88	23.00	22.91	22.91	22.73	22.99	22.77	22.94	23.26
20000	21.92	22.06	22.33	22.49	22.97	23.20	22.91	23.06	22.77	22.79	22.64	23.04	22.74	22.95	23.41
30000	21.87	22.09	22.47	22.80	23.11	23.24	22.77	22.89	23.05	22.78	22.57	22.99	22.80	22.73	23.05
40000	21.87	21.99	22.42	22.88	23.11	23.31	22.75	22.96	22.92	22.69	22.50	22.88	22.69	22.76	22.84
50000	21.82	22.10	22.46	22.92	23.02	23.30	22.76	22.79	22.91	22.54	22.57	22.81	22.74	22.64	22.97
60000	21.78	22.18	22.47	22.99	22.97	23.16	22.82	23.01	22.80	22.48	22.62	22.83	22.76	22.70	23.05
70000	21.77	22.07	22.40	22.96	23.00	23.18	22.86	23.07	22.89	22.74	22.69	22.88	22.93	22.79	23.08
80000	21.79	22.13	22.50	22.95	23.10	23.18	23.05	23.34	22.97	23.02	22.85	23.09	23.02	22.89	23.30
90000	21.85	22.42	22.70	22.88	23.22	23.36	23.21	23.37	23.09	23.15	23.09	23.32	23.09	23.15	23.48
100000	22.15	22.72	22.58	22.93	23.39	23.46	23.38	23.54	23.15	23.36	23.28	23.67	22.98	23.21	23.71
110000	22.13	22.89	23.11	22.94	23.43	24.06	23.86	23.11	23.07	23.71	23.46	23.78	22.79	23.40	23.71
120000	22.28	23.14	22.91	23.06	23.60	23.87	23.75	22.93	23.36	23.69	23.59	23.87	23.27	23.14	23.63
130000	22.20	22.99	23.40	22.83	23.34	24.03	23.79	23.11	23.27	23.98	23.80	23.81	23.16	23.59	23.58
140000	21.98	23.32	22.78	22.78	23.43	23.91	23.83	23.10	22.99	23.99	23.86	23.84	23.10	23.42	23.62
150000	21.89	23.02	22.64	22.62	23.63	24.15	23.63	23.04	22.86	23.68	23.80	23.71	22.68	23.32	23.55
160000	22.00	22.96	22.25	22.84	23.78	24.26	23.66	22.78	22.89	23.89	23.54	23.45	22.69	23.48	23.56
170000	22.12	22.87	22.06	22.86	23.74	24.03	23.48	22.72	23.24	23.74	23.37	23.34	22.59	23.98	23.56
180000	22.37	22.36	22.02	22.76	23.52	23.82	23.27	22.69	23.11	23.62	23.49	23.17	22.77	23.92	23.44
200000	22.09	22.09	22.09	22.66	23.43	23.74	23.03	22.74	22.98	23.46	23.49	22.68	22.67	23.78	23.31
210000	21.89	21.96	22.02	22.68	23.18	23.28	22.89	22.81	22.84	23.27	23.36	22.60	22.61	23.46	23.20
220000	21.86	21.86	22.02	22.55	23.10	23.19	22.86	22.66	23.02	23.14	23.46	22.63	22.69	23.40	23.14
230000	21.83	21.76	22.06	22.86	23.08	22.94	22.81	22.67	23.02	22.89	23.23	22.72	22.84	23.06	23.20
Daily Max	22.37	23.32	23.40	23.06	23.78	24.26	23.79	23.54	23.36	23.99	23.86	23.87	23.27	23.98	23.71
Daily Min	21.77	21.76	21.91	22.04	22.71	22.94	22.75	22.66	22.57	22.48	22.50	22.60	22.59	22.64	22.84
Average	21.97	22.37	22.41	22.73	23.23	23.50	23.14	22.97	22.98	23.25	23.16	23.18	22.84	23.19	23.33

Monthly average: 22.77  
 License Maximum Monthly Average: 31.66  
 Data missing - equipment retrieval/replacement

High Falls Temperature Monitoring - August 2008

Time	08/01/08	08/02/08	08/03/08	08/04/08	08/05/08	08/06/08	08/07/08	08/08/08	08/09/08	08/10/08	08/11/08	08/12/08	08/13/08	08/14/08	08/15/08	08/16/08
0	23.31	23.80	23.26	23.55	23.71	24.03	23.41	24.47	23.67	23.33	22.98	22.09	22.21	22.45	22.34	21.77
10000	23.41	23.88	23.13	23.83	23.64	24.16	23.34	24.36	23.79	23.30	22.93	22.07	22.25	22.41	22.16	21.69
20000	23.56	23.88	23.12	23.80	23.65	23.67	23.08	24.30	23.76	23.18	22.89	22.08	22.30	22.41	22.02	21.71
30000	23.53	23.58	23.05	23.63	23.66	23.73	24.57	24.21	23.74	23.11	22.78	22.12	22.33	22.45	21.92	21.73
40000	23.74	23.27	23.36	23.81	24.07	23.35	24.51	24.01	23.82	23.08	22.76	22.04	22.46	22.30	21.87	21.75
50000	23.53	23.36	23.45	23.36	24.03	23.24	24.49	23.96	23.59	23.01	22.70	21.96	22.52	22.25	21.83	21.78
60000	23.45	23.11	23.34	23.43	24.15	23.29	24.48	23.90	23.55	22.97	22.88	21.97	22.53	22.28	21.81	21.78
70000	23.53	23.18	23.41	23.56	24.08	23.46	24.53	23.94	23.58	22.90	22.66	22.07	22.53	22.28	21.83	21.80
80000	23.52	23.50	23.57	23.57	24.18	23.79	24.98	24.00	23.65	22.96	22.72	22.23	22.66	22.34	21.99	21.94
90000	23.62	23.54	23.63	23.80	24.44	24.50	24.83	24.16	23.75	23.09	22.45	22.48	22.53	22.54	22.22	22.24
100000	23.37	23.82	23.92	23.89	24.61	24.69	24.98	24.38	23.83	23.23	22.66	22.61	22.59	22.81	22.54	22.47
110000	23.58	23.99	23.89	23.86	24.91	24.33	25.16	24.88	23.98	23.32	22.90	22.82	22.83	23.06	22.88	22.67
120000	23.71	24.40	24.01	23.99	25.13	23.75	25.17	24.80	24.21	23.42	23.16	22.65	22.91	23.31	23.14	22.98
130000	23.57	24.55	24.14	23.90	25.23	24.31	25.13	24.73	24.11	23.62	23.44	23.06	23.03	23.47	23.22	23.22
140000	23.70	24.56	24.04	24.02	25.11	24.28	25.44	24.38	24.38	23.79	23.35	22.86	22.98	23.42	23.34	23.12
150000	23.48	24.43	23.69	23.92	23.93	24.43	25.40	24.73	24.39	23.91	23.34	22.63	22.89	23.52	22.95	23.03
160000	24.18	24.56	23.46	24.02	23.89	25.01	25.35	24.61	24.36	23.88	23.04	22.76	22.94	23.47	22.83	22.92
170000	24.42	24.20	23.54	23.73	24.38	24.74	25.33	24.63	24.25	23.81	22.66	22.44	22.91	23.22	22.84	22.77
180000	25.16	24.00	23.15	23.96	24.19	24.62	25.13	24.61	24.09	23.76	22.61	22.33	22.79	22.92	22.61	22.60
190000	24.61	23.87	23.23	23.81	25.45	24.35	25.00	24.59	23.89	23.62	22.45	22.30	22.77	22.74	22.42	22.64
200000	24.23	23.47	23.18	23.65	24.96	24.12	24.90	24.34	23.70	23.52	22.30	22.23	22.71	22.61	22.43	22.51
210000	24.17	23.47	23.29	23.62	24.62	23.97	24.83	24.20	23.61	23.35	22.25	22.19	22.71	22.53	22.29	22.51
220000	23.89	23.16	23.40	23.82	24.44	23.80	24.68	24.06	23.48	23.22	22.17	22.17	22.63	22.50	22.10	22.39
230000	24.15	23.23	23.34	23.84	24.30	23.77	24.55	23.96	23.45	23.10	22.12	22.20	22.55	22.43	21.89	22.30
Daily Max	25.16	24.56	24.14	24.02	25.45	25.01	25.44	24.80	24.39	23.98	23.44	23.06	23.03	23.52	23.34	23.22
Daily Min	23.31	23.11	23.05	23.36	23.56	23.24	23.08	23.90	23.45	22.90	22.12	21.96	22.21	22.25	21.81	21.69
Average	23.81	23.77	23.48	23.74	24.36	24.06	24.71	24.33	23.86	23.36	22.75	22.36	22.64	22.74	22.39	22.35

Monthly average: 22.88  
 License Maximum Monthly Average: 31.67  
 Data missing - equipment retrieval/replacement  
 No data - Equipment failure



High Falls Temperature Monitoring - August 2008

Time	08/17/08	08/18/08	08/19/08	08/20/08	08/21/08	08/22/08	08/23/08	08/24/08	08/25/08	08/26/08	08/27/08	08/28/08	08/29/08	08/30/08	08/31/08
HHMMSS	0000	0000	0000	0000	0000	0000	0000	0000	0000	0000	0000	0000	0000	0000	0000
0	22.20	22.19	23.10	21.92	21.94	22.26	22.32	23.02	22.68	21.88	21.24	21.44	21.53	21.86	22.14
10000	22.16	22.22	23.01	21.90	21.92	22.25	22.36	22.97	22.57	21.85	21.15	21.42	21.47	21.83	22.16
20000	22.09	22.20	23.00	21.86	21.92	22.25	22.37	22.89	22.47	21.80	21.13	21.43	21.44	21.76	22.11
30000	22.05	22.15	22.87	21.86	21.90	22.26	22.36	22.84	22.41	21.77	21.09	21.40	21.37	21.70	22.04
40000	22.07	22.08	22.76	21.98	21.73	22.28	22.35	22.78	22.31	21.71	21.11	21.44	21.35	21.68	21.97
50000	22.05	22.05	22.63	21.97	21.68	22.36	22.25	22.70	22.27	21.68	21.05	21.40	21.28	21.63	21.91
60000	22.04	22.07	22.55	21.92	21.62	22.39	22.26	22.63	22.19	21.82	21.06	21.41	21.23	21.58	21.86
70000	22.08	22.42	22.47	21.97	21.67	22.47	22.35	22.58	22.15	21.59	21.12	21.39	21.20	21.54	21.84
80000	22.20	22.57	22.48	22.13	21.87	22.61	22.38	22.67	22.18	21.87	21.30	21.41	21.28	21.61	21.90
90000	22.45	22.82	22.67	22.33	22.04	22.65	22.48	22.70	22.33	21.85	21.68	21.51	21.42	21.74	22.08
100000	22.71	22.94	22.83	22.57	22.44	22.81	22.54	22.74	22.45	22.11	21.87	21.51	21.86	21.93	22.26
110000	22.84	23.38	22.85	22.77	22.56	22.96	22.66	22.80	22.58	22.28	22.11		21.92	22.10	22.50
120000	23.17	23.38	23.01	22.85	22.84	22.76	22.80	22.82	22.70	22.33	22.27		22.19	22.35	22.51
130000	23.35	23.68	23.01	22.87	23.16	22.78	22.98	23.08	22.88	22.40	22.26		22.44	22.36	22.38
140000	23.59	23.57	23.13	22.90	22.82	22.61	23.07	23.15	22.78	22.40	22.21		22.37	22.55	22.45
150000	23.42	23.82	23.02	22.79	22.52	22.84	23.15	23.37	22.78	22.38	22.07		22.53	22.56	22.35
160000	23.36	24.14	22.94	22.62	22.48	22.46	23.25	23.35	22.63	22.17	21.94		22.58	22.80	22.13
170000	23.41	23.88	22.78	22.55	22.26	22.42	23.27	23.34	22.64	21.83	21.79		22.59	22.76	22.03
180000	23.21	23.70	22.54	22.39	22.07	22.32	23.13	23.36	22.50	21.73	21.70	21.85	22.42	22.65	22.10
190000	22.69	23.40	22.29	22.23	21.92	22.32	23.21	23.22	22.24	21.81	21.62	21.81	22.28	22.52	22.02
200000	22.67	23.35	22.15	22.07	22.32	22.31	23.19	23.09	22.14	21.51	21.56	21.78	22.14	22.36	21.98
210000	22.47	23.34	22.02	22.02	22.29	22.32	23.19	22.99	22.06	21.43	21.48	21.70	22.12	22.30	22.00
220000	22.32	23.14	21.97	21.98	22.26	22.36	23.18	22.86	22.02	21.35	21.44	21.65	22.05	22.22	21.91
230000	22.25	23.08	21.93	21.95	22.26	22.35	23.07	22.76	21.94	21.29	21.42	21.59	21.98	22.14	21.87
Daily Max	23.59	24.14	23.13	22.90	23.16	22.78	23.27	23.37	22.88	22.40	22.27	21.85	22.59	22.80	22.51
Daily Min	22.04	22.05	21.93	21.86	21.62	22.25	22.25	22.58	21.94	21.29	21.05	21.39	21.20	21.54	21.84
Average	22.61	22.99	22.67	22.28	22.19	22.44	22.78	22.95	22.41	21.85	21.57	21.54	21.87	22.10	22.10

Monthly average: 22.68  
 License Maximum Monthly Average: 31.86  
 Data missing - equipment retrieval/replacement  
 No data - Equipment failure

High Falls Temperature Monitoring - September 2008

Time	09/01/08	09/02/08	09/03/08	09/04/08	09/05/08	09/06/08	09/07/08	09/08/08	09/09/08	09/10/08	09/11/08	09/12/08	09/13/08	09/14/08	09/15/08	09/16/08
HHMMSS	0	21.92	21.86	22.61	22.13	21.26	21.00	20.71	20.35	19.56	18.32	19.16	19.33	19.24	18.39	18.17
10000	21.96	21.95	22.64	22.11	21.20	20.97	20.69	20.18	19.44	19.20	19.16	19.32	19.28	19.20	18.36	18.11
20000	22.03	22.02	22.60	22.04	21.16	20.94	20.66	20.19	19.35	19.10	19.09	19.33	19.27	19.17	18.32	18.07
30000	22.00	22.05	22.47	21.94	21.15	20.89	20.64	20.14	19.28	19.02	19.12	19.33	19.25	19.13	18.32	18.06
40000	21.98	22.06	22.41	21.88	21.08	20.94	20.51	19.88	19.33	19.00	19.18	19.32	19.26	19.11	18.25	18.06
50000	22.00	22.05	22.34	21.80	21.08	20.93	20.49	19.91	19.22	19.06	19.13	19.31	19.27	19.07	18.24	18.04
60000	22.00	22.10	22.27	21.77	21.06	20.92	20.45	19.89	19.16	18.92	19.23	19.28	19.27	19.02	18.20	18.02
70000	22.08	22.13	22.20	21.67	21.03	20.85	20.48	19.88	19.22	18.87	19.22	19.24	19.29	18.98	18.14	18.01
80000	22.06	22.19	22.21	21.60	21.05	20.87	20.49	19.86	19.24	18.89	19.18	19.22	19.30	18.97	18.16	18.00
90000	22.25	22.35	22.16	21.62	21.14	20.91	20.58	19.93	19.42	19.23	19.31	19.18	19.35	19.01	18.15	18.04
100000	22.48	22.48	22.27	21.70	21.23	20.91	20.72	19.84	19.66	19.50	19.47	19.19	19.37	19.04	18.21	18.14
110000	22.64	22.60	22.42	21.70	21.38	20.99	20.91	20.11	19.93	19.73	19.43	19.35	19.38	19.05	18.22	18.20
120000	22.51	22.66	22.67	21.73	21.46	21.00	20.87	20.36	20.09	19.72	19.60	19.60	19.38	19.03	18.28	18.26
130000	22.33	22.83	22.87	21.78	21.60	21.04	21.02	20.45	20.23	19.72	19.52	19.63	19.38	19.02	18.33	18.27
140000	22.12	22.79	23.02	21.78	21.52	21.23	20.92	20.43	20.17	19.83	19.36	19.90	19.40	18.98	18.54	18.24
150000	22.13	22.64	23.10	21.84	21.51	21.15	20.99	20.29	20.23	19.78	19.29	19.83	19.39	18.97	18.65	18.25
160000	21.98	22.53	23.13	21.85	21.48	21.12	20.89	20.18	20.20	19.66	19.30	19.74	19.40	18.98	18.76	18.24
170000	21.83	22.32	23.03	21.81	21.45	21.05	20.89	20.10	19.94	19.53	19.29	19.62	19.38	18.89	18.61	18.21
180000	21.74	22.19	22.81	21.79	21.40	21.01	20.62	20.00	19.85	19.38	19.30	19.48	19.35	18.76	18.52	18.17
190000	21.69	21.88	22.67	21.63	21.26	20.90	20.59	19.78	19.73	19.22	19.31	19.45	19.34	18.70	18.39	18.12
200000	21.66	22.08	22.56	21.61	21.21	20.85	20.51	19.73	19.62	19.16	19.34	19.42	19.32	18.65	18.30	18.09
210000	21.64	22.21	22.46	21.50	21.15	20.83	20.51	19.61	19.53	19.26	19.33	19.38	19.30	18.50	18.22	18.07
220000	21.73	22.50	22.25	21.37	21.07	20.75	20.43	19.61	19.42	19.15	19.33	19.34	19.27	18.54	18.19	18.06
230000	21.79	22.52	22.20	21.37	21.03	20.74	20.38	19.63	19.30	19.16	19.33	19.35	19.24	18.48	18.18	18.06
Daily Max	22.54	22.83	23.13	22.13	21.80	21.23	21.02	20.45	20.23	19.83	19.60	19.90	19.40	19.24	18.76	18.27
Daily Min	21.64	21.86	22.16	21.37	21.03	20.74	20.38	19.61	19.16	18.87	19.09	18.18	19.24	18.48	18.14	18.00
Average	22.01	22.29	22.56	21.75	21.25	20.95	20.66	20.02	19.63	19.30	19.29	19.43	19.32	18.94	18.33	18.12

Monthly average: 19.24  
 License Maximum Monthly Average: 31.67  
 Data missing - equipment retrieval/replacement

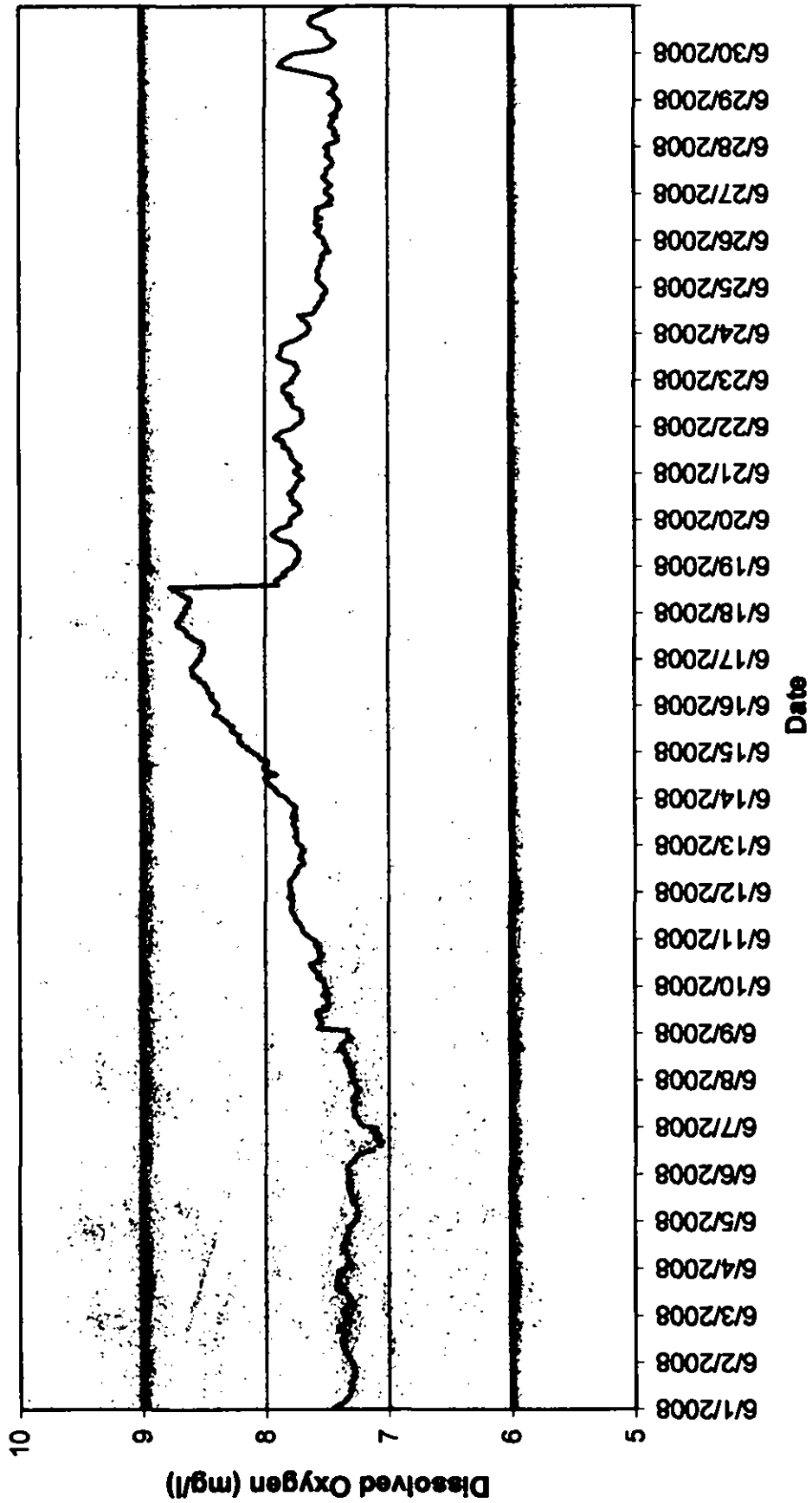
High Falls Temperature Monitoring - September 2008

Time	09/17/08	09/18/08	09/19/08	09/20/08	09/21/08	09/22/08	09/23/08	09/24/08	09/25/08	09/26/08	09/27/08	09/28/08	09/29/08	09/30/08
HHMMSS	0	18.30	17.88	17.96	18.31	18.05	17.98	17.98	18.06	18.11	18.09	18.35	17.94	17.56
10000	18.02	18.28	17.88	17.93	18.30	18.06	17.94	17.96	18.04	18.10	18.10	18.30	17.92	17.53
20000	18.00	18.25	17.88	17.94	18.25	18.05	17.93	17.96	18.05	18.07	18.13	18.22	17.92	17.49
30000	17.98	18.23	17.88	17.96	18.20	18.06	17.94	17.94	18.04	18.04	18.12	18.18	17.90	17.40
40000	17.90	18.31	17.88	17.95	18.18	18.07	17.93	17.94	18.09	18.07	18.11	18.14	17.83	17.42
50000	17.87	18.29	17.86	17.95	18.14	18.07	17.93	17.94	18.09	18.09	18.12	18.09	17.81	17.35
60000	17.88	18.31	17.85	17.94	18.11	18.07	17.95	17.95	18.12	18.05	18.13	18.04	17.79	17.26
70000	17.84	18.29	17.81	17.93	18.09	18.08	17.94	17.96	18.05	18.02	18.14	18.00	17.78	17.20
80000	17.84	18.29	17.83	17.96	18.10	18.07	17.97	17.98	18.07	18.06	18.14	17.99	17.79	17.17
90000	17.97	18.37	17.89	18.09	18.08	18.09	18.05	18.03	18.17	18.13	18.21	17.98	17.77	17.19
100000	18.16	18.47	17.99	18.14	18.16	18.13	18.20	18.20	18.35	18.26	18.26	18.01	17.79	17.20
110000	18.45	18.07	18.17	18.22	18.22	18.15	18.36	18.36	18.51	18.37	18.27	18.01	17.78	17.27
120000	18.68	18.54	18.20	18.37	18.28	18.21	18.44	18.48	18.55	18.44	18.30	18.04	17.77	17.33
130000	18.66	18.55	18.23	18.60	18.40	18.23	18.38	18.57	18.60	18.50	18.36	18.05	17.82	17.33
140000	18.72	18.53	18.24	18.70	18.43	18.30	18.40	18.72	18.62	18.38	18.38	18.07	17.81	17.46
150000	18.91	18.51	18.25	18.79	18.44	18.28	18.31	18.74	18.61	18.39	18.45	18.08	17.86	17.42
160000	18.55	18.36	18.21	18.60	18.48	18.26	18.36	18.64	18.52	18.37	18.55	18.08	17.89	17.45
170000	18.54	18.24	18.15	18.50	18.44	18.23	18.14	18.63	18.50	18.32	18.58	18.07	17.85	17.35
180000	18.50	18.12	18.05	18.43	18.31	18.12	18.07	18.36	18.38	18.23	18.56	18.06	17.81	17.26
190000	18.37	18.03	18.00	18.42	18.22	18.04	18.02	18.34	18.29	18.19	18.56	18.04	17.75	17.16
200000	18.29	18.00	18.03	18.39	18.15	18.00	18.03	18.32	18.23	18.26	18.54	18.03	17.71	17.10
210000	18.26	17.98	18.06	18.34	18.07	17.98	18.08	18.21	18.20	18.23	18.51	17.98	17.68	17.05
220000	18.28	17.94	18.09	18.34	18.04	17.96	18.09	18.15	18.17	18.16	18.49	18.00	17.65	16.98
230000	18.31	17.91	18.00	18.33	18.05	17.95	18.03	18.10	18.14	18.11	18.44	17.96	17.59	16.91
Daily Max	18.91	18.55	18.25	18.79	18.48	18.30	18.44	18.74	18.62	18.50	18.58	18.35	17.94	17.56
Daily Min	17.84	17.91	17.81	17.93	18.04	17.96	17.93	17.94	18.04	18.02	18.09	17.96	17.58	16.91
Average	18.25	18.27	18.01	18.24	18.23	18.11	18.10	18.23	18.27	18.21	18.31	18.07	17.80	17.29

Monthly average: 18.24  
 License Maximum Monthly Average: 31.66  
 Data missing - equipment retrieval/replacement

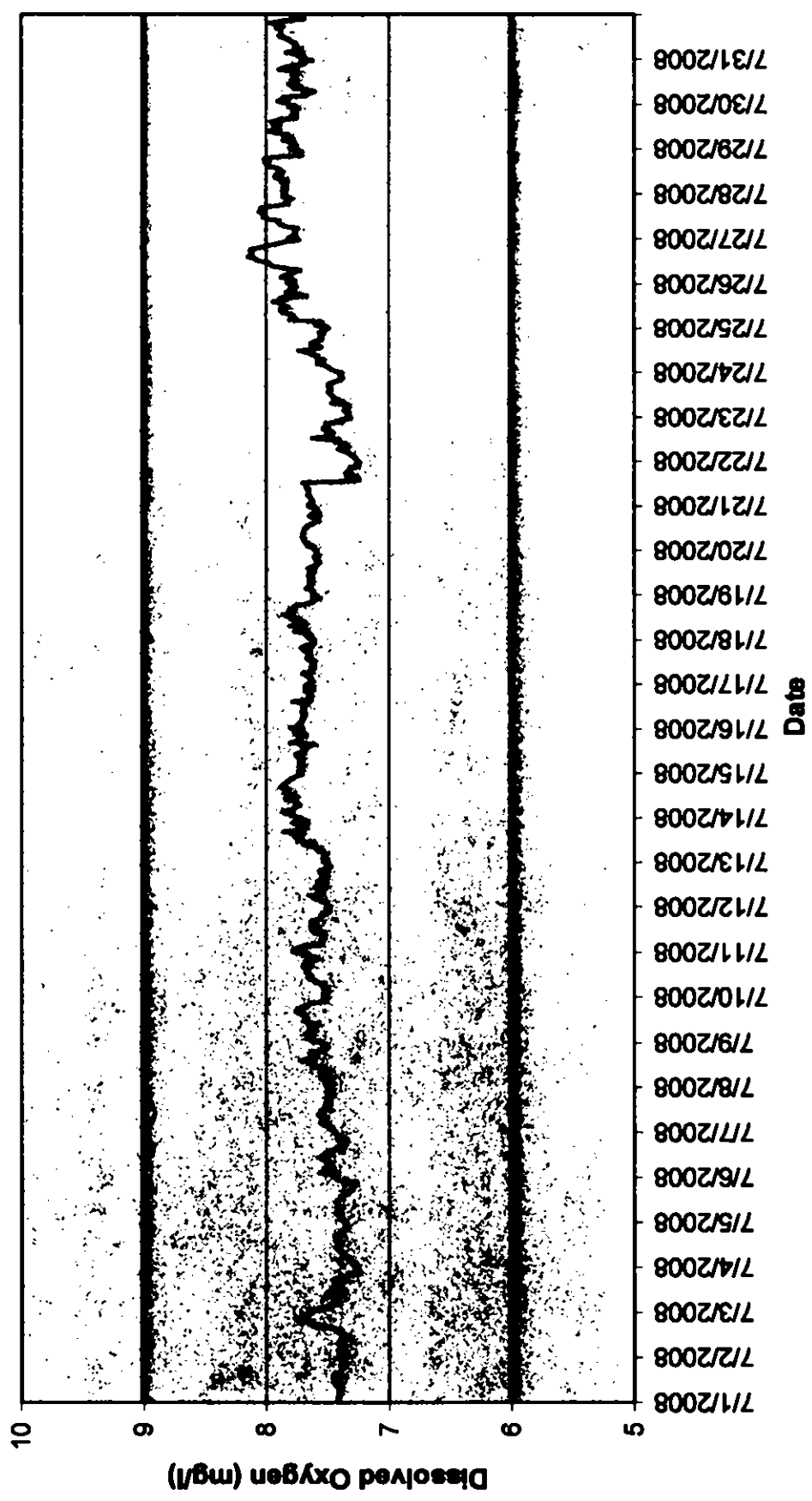
### High Falls pH Monitoring - June 2008

— June — Water Quality Standard



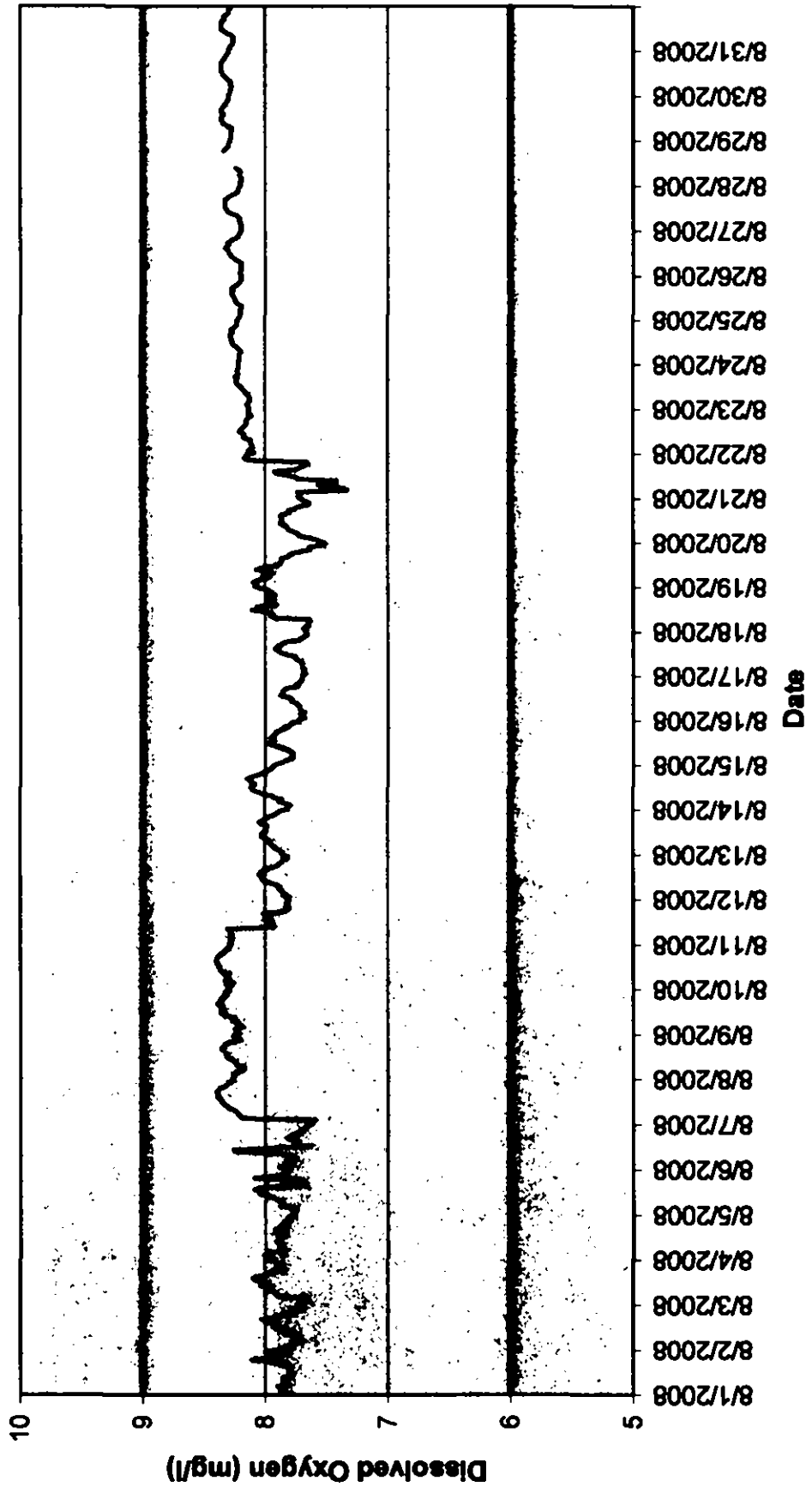
### High Falls pH Monitoring - July 2008

— July — Water Quality Standard



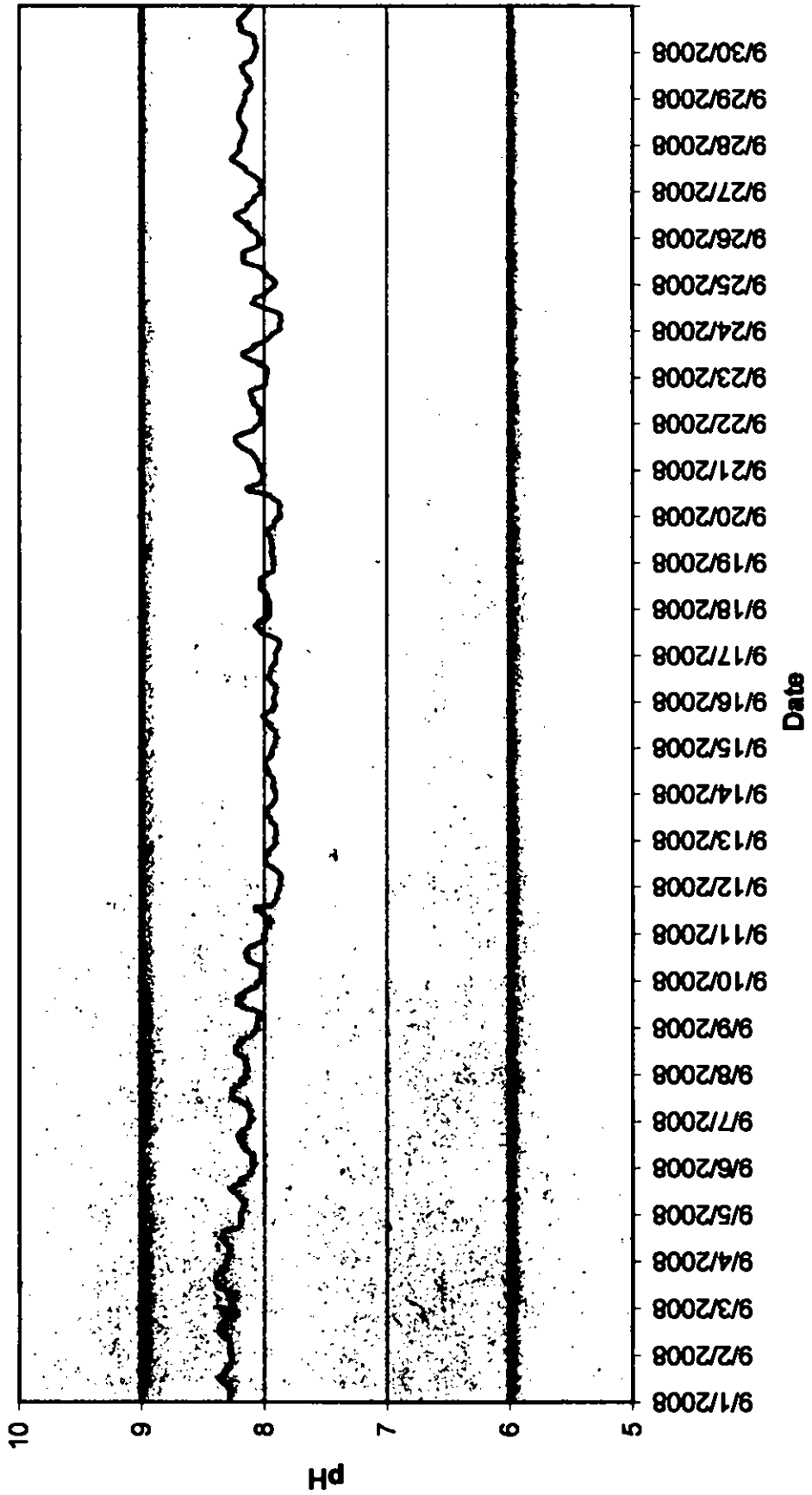
### High Falls pH Monitoring - August 2008

— August — Water Quality Standard



### High Falls pH Monitoring - September 2008

September — Water Quality Standard



High Falls pH Monitoring - June 2008

Time	06/01/08	06/02/08	06/03/08	06/04/08	06/05/08	06/06/08	06/07/08	06/08/08	06/09/08	06/10/08	06/11/08	06/12/08	06/13/08	06/14/08	06/15/08	06/16/08
HHMMSS	0745	730	737	736	726	732	720	730	734	752	763	781	773	783	811	839
0																
10000	744	732	738	735	726	733	724	730	734	753	765	780	775	785	815	840
20000	741	733	738	733	726	733	724	731	758	753	767	780	775	790	814	842
30000	738	734	735	732	727	733	725	731	756	756	769	781	775	790	818	844
40000	736	735	736	732	725	734	726	732	756	758	770	781	777	792	820	844
50000	735	737	728	734	726	732	728	732	754	756	770	781	775	792	822	843
60000	733	737	733	734	726	730	729	732	756	759	771	780	775	795	821	845
70000	732	737	731	735	726	728	728	732	757	757	772	778	775	795	822	847
80000	732	738	733	736	727	728	729	734	757	761	773	777	776	798	821	847
90000	731	738	733	737	727	726	729	735	759	762	775	776	776	799	823	847
100000	732	739	735	738	731	725	728	734	759	763	776	776	778	801	827	849
110000	731	738	734	737	729	719	727	735	758	764	776	774	778	800	828	849
120000	731	739	739	738	730	713	727	735	760	756	776	774	777	791	826	852
130000	732	736	739	735	730	730	730	735	751	757	778	773	775	798	827	854
140000	731	735	742	734	732	709	730	737	750	756	779	769	779	799	831	855
150000	730	736	743	736	731	707	726	740	750	756	779	770	775	802	831	859
160000	729	740	743	735	733	705	727	740	749	754	779	770	778	802	834	859
170000	730	740	743	733	733	711	727	738	750	757	778	773	777	798	836	859
180000	728	742	742	733	731	712	724	739	750	757	778	771	777	800	837	860
190000	729	738	740	732	733	710	724	736	754	756	778	772	775	798	842	860
200000	729	734	740	734	733	712	727	735	751	759	779	771	776	804	841	858
210000	728	732	741	731	733	713	727	730	752	760	782	769	779	805	840	857
220000	730	734	742	729	733	715	729	733	751	759	779	771	781	808	838	856
230000	729	736	739	729	733	710	730	734	752	760	779	771	782	810	839	855
Daily Max	745	742	743	738	733	734	730	740	759	764	782	781	782	810	842	860
Daily Min	728	730	728	729	726	705	720	730	734	752	763	769	773	783	811	839
Average	733	736	736	734	730	720	727	734	752	758	775	775	777	797	828	851

Monthly average: 7.68

Data missing - equipment retrieval/replacement



High Falls pH Monitoring - June 2008

Time	06/17/08	06/18/08	06/19/08	06/20/08	06/21/08	06/22/08	06/23/08	06/24/08	06/25/08	06/26/08	06/27/08	06/28/08	06/29/08	06/30/08
HHMMSS	081708	061808	061908	062008	062108	062208	062308	062408	062508	062608	062708	062808	062908	063008
0	8.53	8.65	7.77	7.80	7.76	7.76	7.78	7.66	7.52	7.50	7.51	7.50	7.42	7.66
10000	8.53	8.66	7.75	7.77	7.76	7.74	7.76	7.65	7.54	7.47	7.51	7.47	7.44	7.53
20000	8.52	8.68	7.76	7.76	7.72	7.71	7.76	7.64	7.55	7.42	7.50	7.42	7.44	7.48
30000	8.51	8.64	7.74	7.73	7.71	7.70	7.74	7.64	7.57	7.40	7.47	7.40	7.48	7.46
40000	8.51	8.63	7.73	7.71	7.73	7.69	7.73	7.65	7.58	7.41	7.46	7.41	7.45	7.45
50000	8.50	8.62	7.73	7.72	7.75	7.70	7.74	7.66	7.57	7.41	7.48	7.41	7.45	7.43
60000	8.50	8.61	7.73	7.72	7.76	7.70	7.74	7.67	7.56	7.44	7.50	7.44	7.43	7.45
70000	8.51	8.62	7.72	7.72	7.78	7.70	7.75	7.70	7.57	7.43	7.51	7.43	7.42	7.47
80000	8.51	8.65	7.74	7.77	7.78	7.71	7.76	7.71	7.58	7.43	7.53	7.43	7.43	7.49
90000	8.53	8.68	7.75	7.75	7.79	7.72	7.81	7.73	7.57	7.44	7.51	7.44	7.45	7.50
100000	8.59	8.71	7.76	7.79	7.80	7.77	7.86	7.82	7.56	7.47	7.50	7.47	7.45	7.51
110000	8.80	8.72	7.79	7.79	7.80	7.78	7.89	7.80	7.55	7.46	7.50	7.46	7.47	7.51
120000	8.84	8.75	7.80	7.78	7.81	7.78	7.90	7.80	7.55	7.46	7.50	7.46	7.55	7.55
130000	8.84	8.78	7.88	7.81	7.86	7.78	7.88	7.59	7.55	7.44	7.48	7.44	7.61	7.60
140000	8.65	7.90	7.90	7.80	7.84	7.81	7.88	7.57	7.53	7.45	7.48	7.45	7.88	7.63
150000	8.66	7.92	7.93	7.77	7.85	7.82	7.87	7.56	7.53	7.41	7.45	7.41	7.78	7.64
160000	8.70	7.92	7.95	7.77	7.85	7.79	7.87	7.56	7.54	7.46	7.45	7.46	7.84	7.64
170000	8.72	7.91	7.93	7.75	7.91	7.84	7.87	7.54	7.53	7.41	7.46	7.41	7.89	7.62
180000	8.72	7.88	7.91	7.74	7.92	7.85	7.85	7.53	7.47	7.42	7.47	7.42	7.86	7.62
190000	8.73	7.84	7.89	7.74	7.90	7.85	7.81	7.54	7.50	7.39	7.50	7.39	7.87	7.57
200000	8.70	7.86	7.84	7.72	7.88	7.85	7.76	7.33	7.50	7.41	7.49	7.41	7.85	7.54
210000	8.70	7.83	7.80	7.69	7.87	7.84	7.73	7.50	7.50	7.41	7.49	7.41	7.82	7.50
220000	8.69	7.82	7.80	7.71	7.81	7.80	7.71	7.51	7.52	7.40	7.48	7.40	7.79	7.45
230000	8.67	7.78	7.80	7.72	7.77	7.77	7.68	7.51	7.52	7.40	7.51	7.40	7.77	7.43
Daily Max	8.73	8.78	7.95	7.81	7.92	7.85	7.90	7.73	7.58	7.50	7.53	7.50	7.89	7.66
Daily Min	8.50	7.78	7.72	7.69	7.71	7.69	7.68	7.50	7.47	7.39	7.45	7.39	7.42	7.43
Average	8.61	8.34	7.81	7.75	7.81	7.77	7.80	7.60	7.54	7.43	7.49	7.43	7.61	7.53

Monthly average: 7.68

Data missing - equipment retrieval/replacement  
 pH meter calibration drift responsible for pH increase from June 16 through June 18.

High Falls pH Monitoring - July 2008

Time	07/01/08	07/02/08	07/03/08	07/04/08	07/05/08	07/06/08	07/07/08	07/08/08	07/09/08	07/10/08	07/11/08	07/12/08	07/13/08	07/14/08	07/15/08	07/16/08
HHMMSS	07/01/08	07/02/08	07/03/08	07/04/08	07/05/08	07/06/08	07/07/08	07/08/08	07/09/08	07/10/08	07/11/08	07/12/08	07/13/08	07/14/08	07/15/08	07/16/08
0	7.42	7.39	7.63	7.27	7.36	7.46	7.44	7.49	7.57	7.54	7.78	7.49	7.54	7.77	7.74	7.81
10000	7.41	7.40	7.61	7.28	7.38	7.44	7.47	7.52	7.65	7.52	7.78	7.51	7.53	7.80	7.70	7.72
20000	7.42	7.40	7.53	7.30	7.38	7.57	7.48	7.46	7.62	7.53	7.73	7.53	7.52	7.85	7.73	7.74
30000	7.40	7.41	7.48	7.31	7.40	7.47	7.48	7.52	7.64	7.50	7.69	7.57	7.54	7.87	7.73	7.72
40000	7.41	7.40	7.45	7.33	7.42	7.53	7.51	7.56	7.69	7.54	7.55	7.61	7.53	7.78	7.70	7.71
50000	7.39	7.40	7.43	7.35	7.43	7.51	7.56	7.56	7.64	7.54	7.56	7.63	7.54	7.78	7.73	7.71
60000	7.41	7.40	7.43	7.37	7.42	7.48	7.55	7.51	7.60	7.53	7.56	7.61	7.59	7.76	7.73	7.69
70000	7.39	7.41	7.43	7.38	7.42	7.47	7.53	7.48	7.65	7.58	7.53	7.54	7.56	7.73	7.72	7.69
80000	7.42	7.38	7.44	7.40	7.42	7.52	7.54	7.50	7.64	7.60	7.52	7.55	7.65	7.77	7.70	7.71
90000	7.44	7.36	7.47	7.42	7.42	7.52	7.58	7.52	7.57	7.62	7.53	7.55	7.70	7.75	7.76	7.71
100000	7.43	7.31	7.51	7.43	7.43	7.58	7.56	7.53	7.63	7.66	7.60	7.60	7.80	7.85	7.75	7.69
110000	7.43	7.38	7.44	7.42	7.43	7.49	7.56	7.63	7.70	7.64	7.62	7.51	7.75	7.75	7.70	7.70
120000	7.46	7.39	7.47	7.42	7.40	7.53	7.52	7.62	7.68	7.65	7.64	7.54	7.74	7.83	7.70	7.69
130000	7.45	7.40	7.42	7.43	7.38	7.50	7.50	7.64	7.68	7.68	7.58	7.59	7.77	7.85	7.88	7.68
140000	7.45	7.38	7.44	7.41	7.38	7.45	7.52	7.73	7.69	7.68	7.62	7.55	7.71	7.85	7.71	7.79
150000	7.40	7.46	7.45	7.43	7.34	7.43	7.51	7.64	7.74	7.67	7.64	7.55	7.74	7.82	7.61	7.63
160000	7.39	7.52	7.42	7.44	7.32	7.38	7.50	7.58	7.76	7.63	7.62	7.50	7.86	7.89	7.81	7.68
170000	7.39	7.60	7.45	7.43	7.30	7.35	7.51	7.60	7.75	7.70	7.58	7.55	7.69	7.87	7.74	7.65
180000	7.38	7.61	7.41	7.36	7.30	7.36	7.49	7.65	7.72	7.64	7.55	7.56	7.73	7.85	7.72	7.63
190000	7.39	7.71	7.33	7.37	7.29	7.39	7.45	7.58	7.67	7.67	7.56	7.57	7.68	7.83	7.73	7.65
200000	7.37	7.75	7.30	7.36	7.27	7.36	7.47	7.53	7.64	7.68	7.53	7.51	7.66	7.81	7.67	7.69
210000	7.36	7.72	7.24	7.35	7.26	7.38	7.48	7.53	7.56	7.62	7.48	7.47	7.79	7.78	7.77	7.61
220000	7.37	7.68	7.26	7.35	7.42	7.41	7.50	7.50	7.51	7.66	7.50	7.51	7.66	7.76	7.73	7.66
230000	7.40	7.65	7.26	7.36	7.44	7.44	7.48	7.55	7.52	7.74	7.51	7.49	7.72	7.71	7.73	7.68
Daily Max	7.46	7.75	7.63	7.44	7.44	7.56	7.58	7.73	7.76	7.74	7.79	7.63	7.86	7.89	7.81	7.81
Daily Min	7.36	7.31	7.24	7.27	7.26	7.35	7.44	7.46	7.51	7.50	7.48	7.47	7.52	7.71	7.61	7.61
Average	7.41	7.48	7.43	7.37	7.37	7.46	7.51	7.56	7.65	7.61	7.59	7.55	7.66	7.80	7.72	7.69

Monthly average: 7.62  
 Data missing - equipment retrieval/replacement

High Falls pH Monitoring - July 2008

Time	07/17/08	07/18/08	07/19/08	07/20/08	07/21/08	07/22/08	07/23/08	07/24/08	07/25/08	07/26/08	07/27/08	07/28/08	07/29/08	07/30/08	07/31/08
HHMMSS	07/17/08	07/18/08	07/19/08	07/20/08	07/21/08	07/22/08	07/23/08	07/24/08	07/25/08	07/26/08	07/27/08	07/28/08	07/29/08	07/30/08	07/31/08
0	7.63	7.63	7.61	7.61	7.66	7.26	7.32	7.44	7.49	7.83	7.82	7.85	7.81	7.83	7.72
10000	7.62	7.67	7.63	7.60	7.62	7.27	7.32	7.47	7.60	7.76	7.79	7.87	7.75	7.83	7.69
20000	7.64	7.64	7.62	7.67	7.62	7.29	7.33	7.48	7.60	7.78	7.78	7.83	7.76	7.86	7.71
30000	7.65	7.66	7.68	7.65	7.63	7.31	7.37	7.52	7.65	7.88	7.77	7.87	7.78	7.87	7.84
40000	7.66	7.77	7.65	7.68	7.64	7.33	7.34	7.59	7.81	7.85	7.77	7.83	7.87	7.67	7.78
50000	7.71	7.68	7.63	7.69	7.66	7.36	7.33	7.57	7.76	7.81	7.74	7.83	7.78	7.67	7.71
60000	7.63	7.70	7.65	7.70	7.66	7.42	7.34	7.53	7.80	7.76	7.84	7.88	7.80	7.60	7.76
70000	7.63	7.81	7.65	7.71	7.65	7.33	7.47	7.59	7.79	7.72	7.89	7.83	7.82	7.66	7.77
80000	7.64	7.68	7.62	7.70	7.66	7.35	7.37	7.56	7.87	7.85	7.90	7.93	7.91	7.78	7.77
90000	7.62	7.70	7.64	7.70	7.67	7.35	7.45	7.64	7.88	7.95	7.88	7.93	7.86	7.72	7.80
100000	7.60	7.72	7.66	7.70	7.68	7.44	7.44	7.64	7.89	7.97	7.98	7.92	7.89	7.82	7.81
110000	7.63	7.80	7.62	7.69	7.67	7.40	7.47	7.74	7.82	7.98	8.03	7.86	7.94	7.75	7.86
120000	7.60	7.81	7.65	7.67	7.71	7.63	7.48	7.60	7.86	8.07	8.02	7.88	7.89	7.80	7.90
130000	7.66	7.87	7.60	7.66	7.28	7.46	7.50	7.55	7.88	8.09	8.01	7.90	7.96	7.75	7.88
140000	7.67	7.78	7.66	7.62	7.24	7.48	7.47	7.60	7.95	8.15	8.06	7.98	7.96	7.77	7.88
150000	7.64	7.62	7.60	7.59	7.27	7.45	7.47	7.64	7.83	8.12	8.04	7.98	7.89	7.79	7.88
160000	7.64	7.77	7.59	7.57	7.29	7.51	7.49	7.61	7.89	8.11	8.05	8.01	7.75	7.73	7.92
170000	7.66	7.78	7.56	7.59	7.36	7.54	7.50	7.55	7.67	8.13	7.94	7.97	7.80	7.75	7.86
180000	7.70	7.75	7.59	7.65	7.34	7.53	7.46	7.56	7.74	8.13	7.82	8.02	7.75	7.90	7.92
190000	7.72	7.65	7.60	7.63	7.31	7.50	7.42	7.56	7.84	8.05	7.84	7.94	7.76	7.86	7.97
200000	7.68	7.62	7.61	7.57	7.32	7.52	7.38	7.54	7.61	7.98	7.82	7.71	7.78	7.79	7.96
210000	7.62	7.59	7.58	7.59	7.25	7.38	7.38	7.57	7.80	7.91	7.79	7.74	7.73	7.69	7.69
220000	7.61	7.62	7.60	7.58	7.24	7.40	7.40	7.53	7.75	7.84	7.87	7.71	7.82	7.72	7.79
230000	7.60	7.61	7.58	7.65	7.24	7.31	7.38	7.51	7.79	7.73	7.84	7.80	7.80	7.62	7.77
Daily Max	7.72	7.87	7.68	7.71	7.71	7.63	7.50	7.74	7.95	8.15	8.06	8.02	7.96	7.91	7.97
Daily Min	7.60	7.59	7.56	7.57	7.24	7.26	7.32	7.44	7.49	7.72	7.74	7.71	7.73	7.60	7.69
Average	7.64	7.71	7.62	7.65	7.49	7.41	7.41	7.57	7.78	7.94	7.69	7.88	7.83	7.76	7.81

Monthly average: 7.62  
 Data missing - equipment retrieval/replacement

High Falls pH Monitoring - August 2008

HHMASS	08/01/08	08/02/08	08/03/08	08/04/08	08/05/08	08/06/08	08/07/08	08/08/08	08/09/08	08/10/08	08/11/08	08/12/08	08/13/08	08/14/08	08/15/08	08/16/08
0	7.77	7.82	7.73	7.99	7.77	7.81	7.63	8.27	8.23	8.31	8.28	7.81	7.86	7.81	7.91	7.73
10000	7.87	7.88	7.69	7.99	7.76	7.89	7.63	8.26	8.22	8.29	8.28	7.82	7.87	7.82	7.86	7.68
20000	7.88	7.76	7.67	8.01	7.78	7.79	7.69	8.26	8.24	8.32	8.29	7.86	7.88	7.79	7.84	7.71
30000	7.84	7.79	7.65	7.98	7.74	7.84	8.16	8.25	8.24	8.26	8.27	7.85	7.83	7.83	7.78	7.72
40000	7.90	7.69	7.85	7.91	7.88	7.78	8.20	8.19	8.18	8.33	8.27	7.87	7.83	7.89	7.79	7.69
50000	7.80	7.77	7.81	7.84	7.86	7.75	8.22	8.17	8.23	8.31	8.28	7.89	7.98	7.87	7.77	7.72
60000	7.82	7.73	7.91	7.89	7.86	7.78	8.23	8.18	8.22	8.31	8.26	7.88	7.96	7.93	7.78	7.72
70000	7.86	7.74	7.85	7.89	7.89	7.90	8.25	8.23	8.27	8.31	8.29	7.80	7.98	7.80	7.72	7.72
80000	7.84	7.84	7.84	7.89	7.82	7.87	8.29	8.24	8.25	8.33	8.31	7.86	7.99	7.83	7.80	7.74
90000	7.80	7.78	7.97	7.91	7.96	7.87	8.24	8.24	8.28	8.35	7.93	7.99	7.99	8.02	7.89	7.75
100000	7.78	7.89	8.04	7.90	8.00	8.26	8.33	8.28	8.32	8.37	7.83	8.02	8.01	8.10	7.93	7.79
110000	7.78	7.84	7.97	7.89	8.05	7.97	8.35	8.30	8.36	8.37	7.94	8.03	8.03	8.11	7.98	7.78
120000	7.81	7.94	8.00	7.89	8.03	7.83	8.36	8.32	8.35	8.38	7.96	8.04	8.01	8.12	7.93	7.83
130000	7.80	7.92	8.09	7.82	8.09	7.77	8.36	8.31	8.36	8.38	8.01	8.05	7.99	8.09	7.93	7.88
140000	7.79	7.92	8.10	7.92	8.02	7.76	8.39	8.34	8.34	8.40	7.95	8.04	7.99	8.12	7.96	7.88
150000	7.79	7.91	8.00	7.86	7.87	7.74	8.38	8.34	8.38	8.40	7.98	8.00	7.98	8.12	7.94	7.86
160000	7.82	8.03	7.96	7.82	7.86	7.81	8.39	8.36	8.39	8.40	8.02	8.01	8.03	8.15	7.92	7.85
170000	7.88	7.90	7.97	7.81	7.77	7.80	8.40	8.34	8.37	8.39	7.84	7.83	8.05	8.13	7.92	7.82
180000	8.11	7.84	7.84	7.87	7.89	7.79	8.36	8.33	8.35	8.37	7.84	7.89	8.01	8.08	7.90	7.73
190000	7.98	7.84	7.91	7.85	8.09	7.73	8.37	8.32	8.36	8.36	7.80	7.95	7.99	8.02	7.84	7.75
200000	7.87	7.74	7.88	7.80	7.94	7.70	8.32	8.24	8.34	8.33	7.82	7.86	7.98	8.01	7.85	7.72
210000	7.86	7.77	7.85	7.80	7.82	7.69	8.31	8.20	8.31	8.32	7.83	7.85	7.92	7.96	7.80	7.71
220000	7.80	7.69	7.90	7.82	7.81	7.69	8.28	8.24	8.33	8.30	7.82	7.81	7.90	7.95	7.79	7.70
230000	7.98	7.70	7.93	7.79	7.84	7.67	8.27	8.26	8.29	8.30	7.81	7.84	7.89	7.94	7.74	7.70
Daily Max	8.11	8.03	8.10	8.01	8.09	8.28	8.40	8.36	8.39	8.40	8.31	8.05	8.05	8.15	7.98	7.88
Daily Min	7.77	7.69	7.65	7.79	7.66	7.63	7.59	8.17	8.18	8.26	7.80	7.81	7.86	7.79	7.74	7.68
Average	7.85	7.82	7.91	7.86	7.87	7.81	8.23	8.27	8.30	8.34	8.04	7.92	7.96	7.99	7.86	7.78

Monthly average: 8.04  
 Data missing - equipment retrieval/replacement  
 No data - Equipment failure

High Falls pH Monitoring - August 2006

HHMMSS	08/17/06	08/18/06	08/19/06	08/20/06	08/21/06	08/22/06	08/23/06	08/24/06	08/25/06	08/26/06	08/27/06	08/28/06	08/29/06	08/30/06	08/31/06
0	7.70	7.67	8.09	7.56	7.73	8.09	8.13	8.22	8.22	8.20	8.20	8.20	8.20	8.30	8.30
10000	7.67	7.69	8.07	7.56	7.73	8.14	8.14	8.22	8.21	8.21	8.20	8.21	8.28	8.29	8.28
20000	7.69	7.69	8.10	7.64	7.72	8.12	8.15	8.21	8.20	8.20	8.20	8.20	8.28	8.28	8.28
30000	7.68	7.64	8.08	7.72	7.74	8.10	8.14	8.21	8.21	8.20	8.20	8.19	8.28	8.28	8.27
40000	7.70	7.70	8.02	7.73	7.33	8.11	8.13	8.21	8.20	8.20	8.21	8.20	8.28	8.28	8.27
50000	7.70	7.64	7.86	7.75	7.37	8.12	8.12	8.21	8.21	8.20	8.21	8.21	8.28	8.28	8.28
60000	7.70	7.64	8.02	7.80	7.54	8.12	8.13	8.20	8.20	8.19	8.21	8.21	8.27	8.29	8.28
70000	7.70	7.92	7.94	7.82	7.57	8.12	8.14	8.20	8.19	8.21	8.22	8.20	8.29	8.28	8.28
80000	7.73	7.96	7.96	7.82	7.82	8.18	8.15	8.22	8.22	8.24	8.25	8.22	8.32	8.30	8.27
90000	7.75	7.94	8.08	7.86	7.43	8.18	8.17	8.24	8.24	8.26	8.29	8.24	8.35	8.32	8.31
100000	7.76	7.98	8.02	7.88	7.74	8.17	8.18	8.26	8.25	8.26	8.31		8.35	8.33	8.33
110000	7.82	8.11	7.92	7.67	7.75	8.21	8.19	8.27	8.25	8.29	8.32		8.36	8.35	8.36
120000	7.87	8.01	7.86	7.67	7.82	8.21	8.21	8.27	8.26	8.30	8.33		8.36	8.35	8.36
130000	7.89	8.07	7.87	7.86	7.91	8.19	8.23	8.28	8.27	8.30	8.33		8.36	8.35	8.36
140000	7.92	7.91	7.87	7.69	7.93	8.18	8.24	8.28	8.28	8.33	8.33		8.36	8.35	8.36
150000	7.91	7.94	7.87	7.86	7.75	8.18	8.23	8.29	8.28	8.32	8.33		8.36	8.36	8.36
160000	7.88	7.97	7.81	7.80	7.72	8.15	8.23	8.26	8.26	8.30	8.33		8.36	8.36	8.34
170000	7.87	7.94	7.80	7.81	7.72	8.16	8.25	8.26	8.26	8.31	8.31		8.36	8.36	8.33
180000	7.83	7.97	7.77	7.78	7.65	8.15	8.22	8.26	8.25	8.29	8.29	8.34	8.36	8.35	8.34
190000	7.73	7.92	7.70	7.73	7.66	8.14	8.22	8.26	8.23	8.26	8.26	8.33	8.33	8.34	8.32
200000	7.70	7.94	7.63	7.65	8.14	8.11	8.23	8.24	8.21	8.23	8.23	8.31	8.32	8.33	8.30
210000	7.68	7.98	7.64	7.64	8.17	8.14	8.22	8.23	8.20	8.22	8.22	8.30	8.31	8.32	8.30
220000	7.66	7.97	7.55	7.66	8.18	8.14	8.22	8.23	8.20	8.21	8.22	8.30	8.30	8.31	8.29
230000	7.66	8.06	7.51	7.70	8.15	8.13	8.22	8.23	8.20	8.20	8.21	8.29	8.30	8.30	8.29
Daily Max	7.92	8.11	8.10	7.88	8.17	8.21	8.25	8.29	8.28	8.33	8.33	8.34	8.36	8.36	8.36
Daily Min	7.66	7.64	7.51	7.55	7.33	8.09	8.12	8.20	8.19	8.19	8.20	8.19	8.27	8.28	8.26
Average	7.76	7.85	7.88	7.76	7.74	8.15	8.19	8.24	8.23	8.25	8.26	8.25	8.32	8.32	8.31

Monthly average: 8.04  
 Data missing - equipment retrieval/replacement  
 No data - Equipment failure

High Falls pH Monitoring - September 2008

Time	09/01/08	09/02/08	09/03/08	09/04/08	09/05/08	09/06/08	09/07/08	09/08/08	09/09/08	09/10/08	09/11/08	09/12/08	09/13/08	09/14/08	09/15/08	09/16/08
0	8.26	8.27	8.27	8.31	8.20	8.10	8.12	8.15	8.07	8.03	7.98	7.88	7.91	7.91	7.93	7.92
10000	8.29	8.27	8.27	8.31	8.19	8.09	8.09	8.16	8.07	8.03	8.00	7.87	7.92	7.92	7.92	7.92
20000	8.29	8.28	8.28	8.31	8.18	8.09	8.12	8.15	8.06	8.02	8.00	7.87	7.91	7.92	7.92	7.92
30000	8.28	8.28	8.28	8.28	8.17	8.10	8.12	8.14	8.06	8.03	7.99	7.88	7.91	7.94	7.91	7.92
40000	8.27	8.28	8.28	8.29	8.17	8.10	8.12	8.15	8.04	8.03	7.96	7.86	7.90	7.93	7.91	7.91
50000	8.28	8.28	8.28	8.29	8.16	8.11	8.12	8.16	8.04	8.00	7.97	7.87	7.91	7.93	7.90	7.91
60000	8.28	8.29	8.28	8.29	8.17	8.09	8.13	8.15	8.05	8.02	7.94	7.87	7.91	7.93	7.91	7.91
70000	8.28	8.29	8.29	8.29	8.17	8.10	8.13	8.15	8.04	8.03	7.95	7.88	7.91	7.93	7.91	7.91
80000	8.29	8.30	8.31	8.30	8.19	8.13	8.15	8.18	8.07	8.07	7.99	7.90	7.92	7.93	7.91	7.91
90000	8.33	8.34	8.33	8.32	8.22	8.16	8.19	8.18	8.13	8.10	8.00	7.93	7.95	7.95	7.93	7.94
100000	8.35	8.35	8.36	8.33	8.22	8.15	8.21	8.22	8.18	8.14	8.02	7.94	7.95	7.97	7.96	7.95
110000	8.36	8.36	8.38	8.35	8.25	8.18	8.25	8.24	8.19	8.14	8.04	7.98	7.95	7.97	7.96	7.96
120000	8.38	8.36	8.38	8.34	8.26	8.19	8.27	8.23	8.23	8.14	8.08	8.00	7.97	7.97	7.96	7.97
130000	8.35	8.38	8.39	8.36	8.28	8.17	8.27	8.24	8.22	8.14	8.06	8.00	7.98	7.99	7.99	7.96
140000	8.33	8.37	8.40	8.34	8.28	8.21	8.27	8.24	8.19	8.16	7.95	8.00	7.98	7.99	8.00	7.96
150000	8.33	8.36	8.40	8.34	8.21	8.21	8.27	8.22	8.23	8.15	7.92	7.99	7.98	7.99	8.00	7.95
160000	8.32	8.35	8.40	8.28	8.21	8.20	8.27	8.19	8.21	8.14	7.92	7.98	7.98	8.00	8.02	7.96
170000	8.31	8.32	8.39	8.21	8.20	8.22	8.24	8.21	8.18	8.13	7.90	7.98	7.98	7.96	7.99	7.96
180000	8.30	8.32	8.38	8.20	8.18	8.18	8.20	8.18	8.16	8.09	7.90	7.97	7.94	7.97	7.96	7.94
190000	8.28	8.25	8.35	8.20	8.15	8.19	8.18	8.13	8.13	8.05	7.90	7.95	7.93	7.96	7.95	7.92
200000	8.27	8.24	8.33	8.19	8.12	8.14	8.17	8.10	8.08	8.02	7.90	7.94	7.92	7.94	7.92	7.91
210000	8.27	8.25	8.31	8.20	8.11	8.13	8.17	8.10	8.06	7.99	7.89	7.92	7.91	7.95	7.92	7.91
220000	8.27	8.25	8.32	8.20	8.11	8.13	8.17	8.08	8.06	8.01	7.89	7.91	7.91	7.94	7.92	7.91
230000	8.27	8.26	8.32	8.19	8.10	8.13	8.15	8.06	8.07	8.01	7.98	7.92	7.91	7.94	7.92	7.91
Daily Max	8.38	8.38	8.40	8.36	8.28	8.22	8.27	8.24	8.23	8.16	8.08	8.00	7.98	8.00	8.02	7.97
Daily Min	8.27	8.24	8.26	8.19	8.10	8.08	8.09	8.05	8.04	7.99	7.88	7.86	7.90	7.91	7.90	7.91
Average	8.30	8.30	8.33	8.28	8.19	8.15	8.18	8.17	8.12	8.07	7.98	7.93	7.93	7.95	7.94	7.93

Monthly average: 8.08  
 Data missing - equipment retrieval/replacement

High Falls pH Monitoring - September 2008

Time	09/17/08	09/18/08	09/19/08	09/20/08	09/21/08	09/22/08	09/23/08	09/24/08	09/25/08	09/26/08	09/27/08	09/28/08	09/29/08	09/30/08
HHMMSS	0	7.91	7.96	7.92	7.87	8.04	8.03	7.99	7.88	7.91	8.05	8.20	8.16	8.07
10000	7.91	7.96	7.93	7.87	8.04	8.03	7.98	7.87	7.91	8.05	8.02	8.20	8.16	8.07
20000	7.90	7.96	7.93	7.88	8.04	8.02	7.98	7.88	7.93	8.06	8.04	8.18	8.16	8.06
30000	7.89	7.97	7.94	7.88	8.05	8.02	7.98	7.88	7.94	8.07	8.03	8.18	8.15	8.07
40000	7.88	7.97	7.94	7.88	8.06	8.03	7.98	7.87	7.97	8.11	8.03	8.17	8.12	8.08
50000	7.88	7.97	7.95	7.87	8.06	8.05	8.00	7.88	7.98	8.12	8.04	8.17	8.12	8.08
60000	7.88	7.99	7.94	7.88	8.08	8.05	8.05	7.87	8.00	8.14	8.05	8.16	8.11	8.08
70000	7.88	7.98	7.93	7.88	8.08	8.04	8.03	7.87	8.01	8.12	8.07	8.16	8.11	8.08
80000	7.90	7.98	7.94	7.91	8.10	8.05	8.09	7.87	8.02	8.17	8.08	8.16	8.11	8.09
90000	7.93	8.01	7.94	7.93	8.11	8.07	8.13	7.89	8.08	8.19	8.12	8.17	8.13	8.13
100000	7.97	8.04	7.95	7.95	8.15	8.09	8.16	7.93	8.12	8.22	8.15	8.18	8.14	8.17
110000	8.02	8.04	7.94	7.97	8.16	8.09	8.18	7.98	8.17	8.24	8.15	8.19	8.14	8.20
120000	8.04	8.04	7.95	8.05	8.20	8.10	8.18	8.02	8.17	8.23	8.16	8.20	8.15	8.20
130000	8.04	8.04	7.95	8.13	8.22	8.09	8.14	8.06	8.18	8.20	8.20	8.21	8.17	8.19
140000	8.06	8.03	7.96	8.15	8.23	8.11	8.11	8.10	8.16	8.16	8.21	8.21	8.18	8.21
150000	8.08	8.04	7.99	8.13	8.24	8.11	8.08	8.08	8.17	8.14	8.24	8.21	8.18	8.20
160000	8.05	8.01	7.99	8.06	8.24	8.12	8.09	8.08	8.18	8.14	8.27	8.21	8.19	8.21
170000	8.05	7.99	7.97	8.03	8.23	8.11	8.04	8.08	8.16	8.14	8.27	8.20	8.17	8.19
180000	8.03	7.97	7.94	8.02	8.19	8.06	8.01	8.02	8.11	8.11	8.24	8.20	8.16	8.18
190000	7.98	7.93	7.92	8.02	8.14	8.02	7.98	7.99	8.07	8.08	8.23	8.19	8.11	8.16
200000	7.96	7.93	7.82	8.01	8.09	7.99	7.96	7.99	8.05	8.09	8.21	8.18	8.10	8.15
210000	7.96	7.93	7.92	8.01	8.08	7.99	7.95	7.96	8.04	8.08	8.20	8.17	8.09	8.13
220000	7.96	7.93	7.89	8.01	8.07	7.99	7.94	7.94	8.05	8.05	8.20	8.17	8.08	8.12
230000	7.97	7.93	7.90	8.02	8.05	7.99	7.91	7.82	8.04	8.03	8.20	8.16	8.08	8.12
Daily Max	8.08	8.04	7.99	8.15	8.24	8.12	8.18	8.10	8.18	8.24	8.27	8.21	8.19	8.21
Daily Min	7.96	7.93	7.89	7.87	8.04	7.99	7.91	7.86	7.91	8.03	8.01	8.16	8.08	8.06
Average	7.96	7.98	7.94	7.98	8.12	8.05	8.04	7.95	8.06	8.12	8.14	8.18	8.14	8.14

Monthly average: 8.08  
 Data missing - equipment retrieval/replacement

**Appendix B**

**High Falls Hydroelectric Project**

**FERC No. 2595**

**Documentation of Agency Consultation**





**Wisconsin Public Service Corporation**  
(a subsidiary of WPS Resources Corporation)  
700 North Adams Street  
P.O. Box 19002  
Green Bay, WI 54307-9002

January 20, 2009

**To: Mr. Scott Watson, Wisconsin Department of Natural Resources  
Mr. Mike Donofrio, Wisconsin Department of Natural Resources  
Ms. Justine Hasz, Wisconsin Department of Natural Resources  
Ms. Louise Clemency, U.S. Fish and Wildlife Service**

**Re: 2008 Water Quality Monitoring Results for the High Falls (FERC No. 2595)  
Hydroelectric Project**

**As per the Water Quality Monitoring Plans for the High Falls Hydroelectric Project, Wisconsin Public Service Corporation (WPSC) is pleased to submit water quality-monitoring data from the 2008 monitoring season for your review and comment.**

**Per the water quality-monitoring plans for the High Falls Hydroelectric Project, dissolved oxygen (D.O.), temperature, and pH were monitored in the tailrace of the High Falls Hydroelectric facility, at the Boat Landing No. 3 Bridge over the Peshtigo River. Water quality monitoring was conducted using Hydrolab Datasonde<sup>®</sup> monitoring equipment. Per the manufacturer, the monitoring equipment has a D.O. accuracy of +/- 0.2 mg/l. All monitoring data collected was adjusted for a loss of calibration if a post calibration of the equipment showed calibration drift of 0.2 mg/l or greater. For compliance purposes, any dissolved oxygen readings below 4.80 mg/l is an exceedence of the Project License limit.**

**During the month of June, WPSC experienced multiple dissolved oxygen meter equipment failures which resulted in missing or erratic monitoring data, however, it is very unlikely that dissolved oxygen levels were below water quality standards during these periods as dissolved oxygen concentrations were not consistently below 6 milligrams per liter until July of 2008. There is only one period of dissolved oxygen readings below the water quality standard to note. The period in question occurred on June 13, 2008, and is an anomaly given that there were no changes in operation during the period in question and the previous and subsequent hourly readings were two to**

**High Falls Hydroelectric Project  
2008 Water Quality Monitoring Report  
Page 2 of 2**

three milligrams per liter higher.

There are no deviations from the State temperature or pH standards to report. Attached for your review is water quality monitoring data collected between June 1 and September 30, 2008. Please review the attached data and provide any comments you may have as soon as possible, but within 30 days of this letter. Should you have any questions or concerns, please do not hesitate to call me at (920) 433-1833. Thank you for your time and consideration.

Sincerely,

A handwritten signature in black ink that reads "Mark Metcalf". The signature is written in a cursive, slightly slanted style.

**Mark W. Metcalf  
Environmental Consultant  
Telephone: (920) 433-1833**

**Attach.**

**cc: Mr. Shawn Puzen, IBS  
Mr. Bruce Crocker, WPSC  
Mr. Ed Brandt, WPSC**

## **Metcalf, Mark W**

---

**From:** Metcalf, Mark W  
**Sent:** Tuesday, January 20, 2009 7:41 AM  
**To:** 'Clemency, Louise'; 'Donofrio, Michael'; 'Hasz, Justine'; 'Watson, Scott'  
**Cc:** Puzen, Shawn C; Crocker, Bruce E; Brandt, Edward S  
**Subject:** 2008 High Falls water quality monitoring data

**Attachments:** High Falls WQM report 2008 mwm.doc; 2008 dissolved oxygen data.pdf

Good Morning Everyone,

Wisconsin Public Service Corporation (WPSC) is pleased to submit water quality monitoring data for the High Falls Hydroelectric Project for your review and comment. Attached to this e-mail is a cover letter and dissolved oxygen data collected from June 1 through September 30, 2008. Due to the size of the data files, I will be sending the temperature and pH data in separate e-mails. Please review the attached data provide any comments you may have within 30 days of this letter. Feel free to contact me if you have any questions.

Sincerely,

Mark Metcalf  
Integrys Business Support, LLC.  
(920) 433-1833  
MWMetcalf@integrysgroup.com

*Providing support for Integrys Energy Group, Integrys Energy Services, Michigan Gas Utilities, Minnesota Energy Resources, North Shore Gas, Peoples Gas, Upper Peninsula Power and Wisconsin Public Service.*



High Falls WQM  
report 2008 mwm...



2008 dissolved  
oxygen data.pdf...

**Metcalf, Mark W**

---

**From:** Metcalf, Mark W  
**Sent:** Tuesday, January 20, 2009 7:44 AM  
**To:** 'Clemency, Louise'; 'Donofrio, Michael'; 'Hasz, Justine'; 'Watson, Scott'  
**Cc:** Puzen, Shawn C; Crocker, Bruce E; Brandt, Edward S  
**Subject:** 2008 High Falls temperature monitoring data

**Attachments:** 2008 temperature data.pdf

Good Morning,

Attached is the High Falls Hydroelectric Project 2008 temperature monitoring data for your review.



2008 temperature  
data.pdf (7 M...

Sincerely,

Mark Metcalf  
Integrays Business Support, LLC.  
(920) 433-1833  
MWMetcalf@integraysgroup.com

*Providing support for Integrays Energy Group, Integrays Energy Services, Michigan Gas Utilities, Minnesota Energy Resources, North Shore Gas, Peoples Gas, Upper Peninsula Power and Wisconsin Public Service.*

**Metcalf, Mark W**

---

**From:** Metcalf, Mark W  
**Sent:** Tuesday, January 20, 2009 7:52 AM  
**To:** 'Donofrio, Michael'; 'Watson, Scott'  
**Cc:** 'Clemency, Loise '  
**Subject:** High Falls water quality files

Hi Mike and Scott,

My e-mail with the High Falls temperature data has been returned indicating the attached files exceed the Department's allowable limit. As a result, I will be putting all of the High Falls water quality monitoring data on a CD and will mail a copy of the report to you today. Please let me know if you have questions.

Thanks,  
Mark

Mark Metcalf  
Environmental Consultant - Air & Water  
(920) 433-1833

**Metcalf, Mark W**

---

**From:** Louise\_Clemency@fws.gov  
**Sent:** Wednesday, January 21, 2009 9:28 AM  
**To:** Metcalf, Mark W; Nick\_Utrup@fws.gov  
**Cc:** Crocker, Bruce E; Brandt, Edward S; Hasz, Justine; Donofrio, Michael; Watson, Scott; Puzen, Shawn C  
**Subject:** Re: 2008 High Falls water quality monitoring data

Hello Mark,  
I am pleased to be able to introduce to you a new FERC contact for our office, Nick Utrup. He can be reached at 920-866-1736 and by email at Nick\_Utrup@fws.gov. Please add Nick to your agency contact lists. I will be forwarding your recent emails to Nick.

Thank you,  
Louise

Louise Clemency  
Field Supervisor  
Wisconsin Ecological Services Office  
U.S. Fish and Wildlife Service  
2661 Scott Tower Drive  
New Franken, Wisconsin 54229-9565  
920-866-1725  
920-866-1710 Fax

"Metcalf, Mark W"  
<MMMetcalf@integr  
ysgroup.com>

01/20/2009 07:40  
AM

To  
"Clemency, Loiuise "  
<Louise\_Clemency@fws.gov>,  
"Donofrio, Michael"  
<Michael.Donofrio@dnr.state.wi.us>,  
"Hasz, Justine"  
<haszj@dnr.state.wi.us>, "Watson,  
Scott" <scott.watson@wisconsin.gov>

CC  
"Puzen, Shawn C"  
<SCPuzen@integr  
ysgroup.com>,  
"Crocker, Bruce E"  
<BECrocker@wisconsinpublicservice.c  
om>, "Brandt, Edward S"  
<ESBrandt@wisconsinpublicservice.co  
m>

Subject  
2008 High Falls water quality  
monitoring data

Good Morning Everyone,

Wisconsin Public Service Corporation (WPSC) is pleased to submit water quality monitoring data for the High Falls Hydroelectric Project for your review and comment. Attached to this e-mail is a cover letter and dissolved oxygen data collected from June 1 through September 30, 2008.

Due to the size of the data files, I will be sending the temperature and pH data in separate e-mails. Please review the attached data provide any comments you may have within 30 days of this letter. Feel free to contact me if you have any questions.

Sincerely,

Mark Metcalf  
Integrus Business Support, LLC.  
(920) 433-1833  
MMMetcalf@integrusgroup.com

Providing support for Integrus Energy Group, Integrus Energy Services, Michigan Gas Utilities, Minnesota Energy Resources, North Shore Gas, Peoples Gas, Upper Peninsula Power and Wisconsin Public Service.

<<High Falls WQM report 2008 mmm.doc>> <<2008 dissolved oxygen data.pdf>>  
[attachment "High Falls WQM report 2008 mmm.doc" deleted by Louise Clemency/R3/FWS/DOI]  
[attachment "2008 dissolved oxygen data.pdf" deleted by Louise Clemency/R3/FWS/DOI]

**Metcalf, Mark W**

---

**From:** Donofrio, Michael C - DNR [Michael.Donofrio@wisconsin.gov]  
**Sent:** Thursday, February 05, 2009 7:42 AM  
**To:** Metcalf, Mark W; Clemency, Louise ; Watson, Scott M - DNR  
**Cc:** Puzen, Shawn C; Crocker, Bruce E; Brandt, Edward S  
**Subject:** RE: 2008 High Falls water quality monitoring data

WDNR has reviewed the data and have no comments at this time. Justine Hasz has transferred to Wisconsin Rapids so please remove her from your list. Thanks.

 *Michael Donofrio*

Lower Fox/ Upper Green Bay Fisheries Supervisor  
Bureau of Fisheries Management  
Wisconsin Department of Natural Resources  
101 N Ogden Rd, P.O. Box 208  
Peshtigo, WI 54157  
(☎) phone: (715)582-5050  
(☎) fax: (715) 582-5005  
(✉) e-mail: Michael.Donofrio@Wisconsin.gov

---

**From:** Metcalf, Mark W [mailto:MWMetcalf@integrysgroup.com]  
**Sent:** Tuesday, January 20, 2009 7:41 AM  
**To:** Clemency, Loluse ; Donofrio, Michael C - DNR; Hasz, Justine R - DNR; Watson, Scott M - DNR  
**Cc:** Puzen, Shawn C; Crocker, Bruce E; Brandt, Edward S  
**Subject:** 2008 High Falls water quality monitoring data

Good Morning Everyone,

Wisconsin Public Service Corporation (WPSC) is pleased to submit water quality monitoring data for the High Falls Hydroelectric Project for your review and comment. Attached to this e-mail is a cover letter and dissolved oxygen data collected from June 1 through September 30, 2008. Due to the size of the data files, I will be sending the temperature and pH data in seperate e-mails. Please review the attached data provide any comments you may have within 30 days of this letter. Feel free to contact me if you have any questions.

Sincerely,

Mark Metcalf  
Integrys Business Support, LLC.  
(920) 433-1833  
MWMetcalf@integrysgroup.com

*Providing support for Integrys Energy Group, Integrys Energy Services, Michigan Gas Utilities, Minnesota Energy Resources, North Shore Gas, Peoples Gas, Upper Peninsula Power and Wisconsin Public Service.*



**2008 High Falls water quality monitoring data**

<<High Falls WQM report 2008 mwm.doc>> <<2008 dissolved oxygen data.pdf>>

**Response to Comments from the Wisconsin Department of Natural Resources:**

**The Wisconsin Department of Natural Resources did not have comments on the 2008 water quality monitoring report for the High Falls Hydroelectric Project.**

**Metcalf, Mark W**

---

**From:** Nick\_Utrup@fws.gov  
**Sent:** Tuesday, January 27, 2009 2:24 PM  
**To:** Metcalf, Mark W  
**Subject:** Re: 2008 High Falls water quality, pH, and water temperature monitoring data

Mark,

Please add me to your email lists regarding FERC projects. You can remove Louise Clemency from this list as she will most likely just forward your email on to me.

I have received your reports regarding water quality, pH and water temperature monitoring data

The USFWS will not be providing comments on these reports.

Sincerely,

Nicholas J. Utrup

Fish and Wildlife Biologist  
U.S. Fish and Wildlife Service  
Wisconsin Ecological Services Office  
2661 Scott Tower Drive  
New Franken, WI 54229  
Office: (920) 866-1736  
FAX: (920) 866-1710  
Cell: (573) 239-1475  
Email: Nick\_Utrup@fws.gov

**Response to Comments from the United States Fish and Wildlife Service:**

**The U.S. Fish and Wildlife service did not provide comments on the 2008 water quality monitoring report for the High Falls Hydroelectric Project.**