



Wisconsin Public Service Corporation

700 North Adams Street
P.O. Box 19001
Green Bay, WI 54307-9001

www.wisconsinpublicservice.com

December 7, 2011

FERC Project Nos. 1999 and 2476

Ms. Kimberly D. Bose, Secretary
Federal Energy Regulatory Commission
888 First Street, NE
Washington, DC 20426

Dear Secretary Bose:

RE: 2010 Noxious Plants Monitoring Reports, Wausau and Jersey Hydroelectric Projects

Per the order a Amending Purple Loosestrife Monitoring Plan issued October 23, 2008, Wisconsin Public Service Corporation (WPS) is to provide annual updates on the *Galerucella sp.* beetles (beetles) release sites and purple loosestrife populations for a period of six years, beginning in 2009 to the Wisconsin Department of Natural Resources (WDNR) and the U.S. Fish and Wildlife Service (FWS) no later than October 31st of each year and to the Federal Energy Regulatory Commission (FERC) with agency comments no later than December 15 of each year.

Jersey Hydroelectric Project

In 2011, WPS released beetles that were reared on potted purple loosestrife plants. Approximately 2000 beetles were released on July 20, 2011.

A purple loosestrife survey was conducted at the Jersey Hydroelectric Project on July 20, 2011. The results of the survey indicated a total of sixteen (16) purple loosestrife colonies within the project boundary. Beetle feeding was noted at fifteen (15) colonies. Heavy feeding (colonies with 75% to 100% of plants with active beetle feeding) was noted at eight (8) of those colonies. For comparison purposes, 2010 survey results noted a total of thirty-five (35) purple loosestrife colonies. Beetle feeding was noted at twenty-eight (28) colonies with heavy feeding noted at thirteen (13) colonies.

The purple loosestrife figure and data sheet provide the location of the purple loosestrife, location of beetle feeding and the beetle release location. The figure and datasheet are located in Appendix A.

Wausau Hydroelectric Project

In 2011, WPS released beetles that were reared on potted purple loosestrife plants. Approximately 2000 beetles were released at the Wausau Hydroelectric Project on July 17, 2011.

Ms. Kimberly D. Bose, Secretary

December 7, 2011

Page 2 of 2

WPS completed a purple loosestrife survey on July 20, 2011. The results of the survey indicated a total of eight (8) purple loosestrife colonies in the project boundary. Beetle feeding was noted at six (6) colonies. For comparison, the 2010 survey noted a total of thirteen (13) colonies. Beetle feeding was noted at five (5) colonies.

The purple loosestrife survey figure and datasheet provide the location of the purple loosestrife, location of beetle feeding and beetle release locations. The figure and data sheet are located in Appendix B.

Documentation of submittal of these results to the Wisconsin Department of Natural Resources and the United States Fish and Wildlife Service has been included in Appendix C. No comments were received from the resource agencies.

If you have any questions regarding this report, please do not hesitate to contact Darrin Johnson at (715) 345-7509.

Sincerely,

A handwritten signature in black ink, appearing to read "T. Jensky". The signature is written in a cursive, flowing style.

Terry P. Jensky

Vice President-Energy Supply Operations

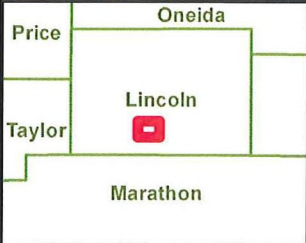
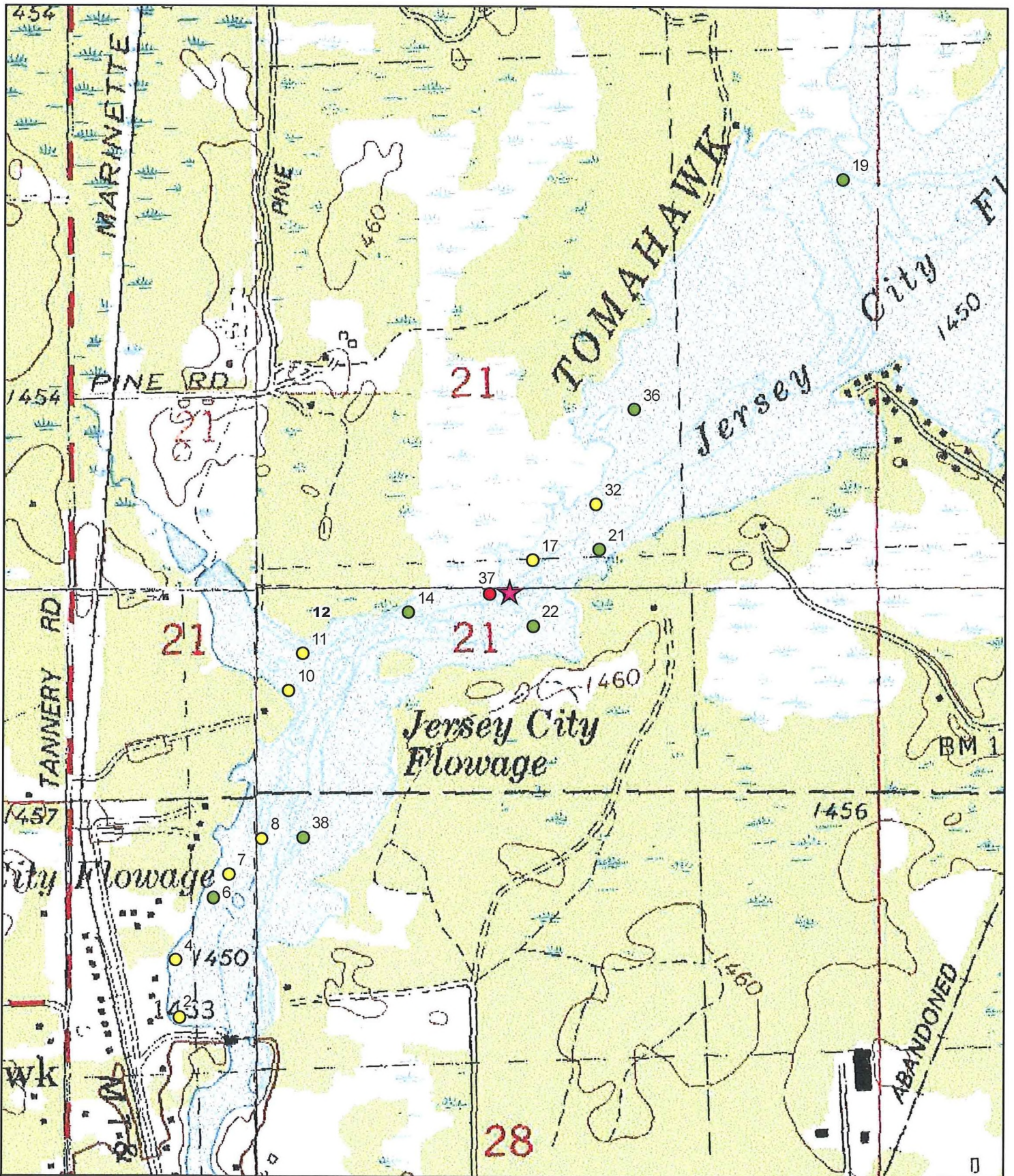
Enc.

cc: Mr. Howard Giesler, WPS
Mr. Bruce Crocker, WPS
Ms. Joan Johaneck, WPS
Ms. Pat Grant, FERC-Chicago

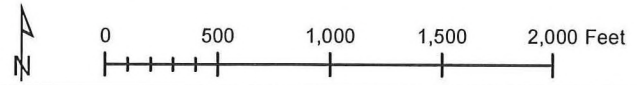
Mr. Gil Snyder, WPS
Mr. Bill Błoczynski, WPS
Mr. Shawn Puzen, IBS

APPENDIX A

JERSEY HYDROELECTRIC PROJECT
PURPLE LOOSESTRIFE SURVEY RESULTS



2011 Jersey Flowage Purple Loosestrife Survey



- ★ Beetle Release Site
- Purple Loosestrife**
- 0-5 Plants
- 6-50 Plants
- >50 Plants

Purple Loosestrife Survey Form

Hydroelectric Project
Inspection Date

Jersey 2011

20-Jul-11

General Plant Vigor							
Colony Number	Colony Size S 0-5 M 6-50 L >50	Plant Height 4=>4ft 3=2-4ft 2=1-2 ft 1= <1 ft	Plant Flowering 4=100% of plants 3=51-99% of plants 2=26-50% of plants 1= <25% of plants	Beetle Feeding 4=0-25% feeding 3=26-50% feeding 2=51-75% feeding 1=76-100% feeding	Total Plant Vigor 10 12=good 7- 9=fair 4- 6=poor 0- 3=very poor	Notes	GPS Point
1			NO PLANTS NOTED				
2	M	3	2	1	6	heavy feeding	na
3			NO PLANTS NOTED				
4	M	3	2	1	6	heavy feeding	na
5			NO PLANTS NOTED				
6	S	3	3	2	8	feeding	184
7	M	3	4	2	9	feeding	183
8	M	3	3	2	8	feeding	182
9			NO PLANTS NOTED				
10	M	2	2	1	5	heavy feeding	na
11	M	2	2	1	5	heavy feeding	na

Purple Loosestrife Survey Form

Hydroelectric Project

Jersey 2011

Inspection Date

20-Jul-11

General Plant Vigor							
Colony Number	Colony Size S 0-5 M 6-50 L >50	Plant Height 4=>4ft 3=2-4ft 2=1-2 ft 1= <1 ft	Plant Flowering 4=100% of plants 3=51-99% of plants 2=26-50% of plants 1= <25% of plants	Beetle Feeding 4=0-25% feeding 3=26-50% feeding 2=51-75% feeding 1=76-100% feeding	Total Plant Vigor 10= 12=good 7= 9=fair 4= 6=poor 0= 3=very poor	Notes	GPS Point
12			NO PLANTS NOTED				
13			NO PLANTS NOTED				
14	S	4	3	2	9	feeding	181
15			NO PLANTS NOTED				
16			NO PLANTS NOTED				
17	M	4	3	2	9	feeding	179
18			NO PLANTS NOTED				
19	S	4	4	4	12	no feeding	176
20			NO PLANTS NOTED				
21	S	3	2	1	6	heavy feeding	187
22	S	4	3	1	8	heavy feeding	186

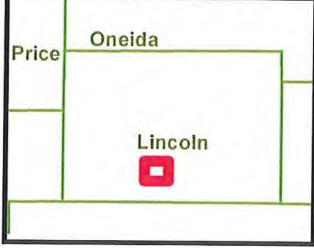
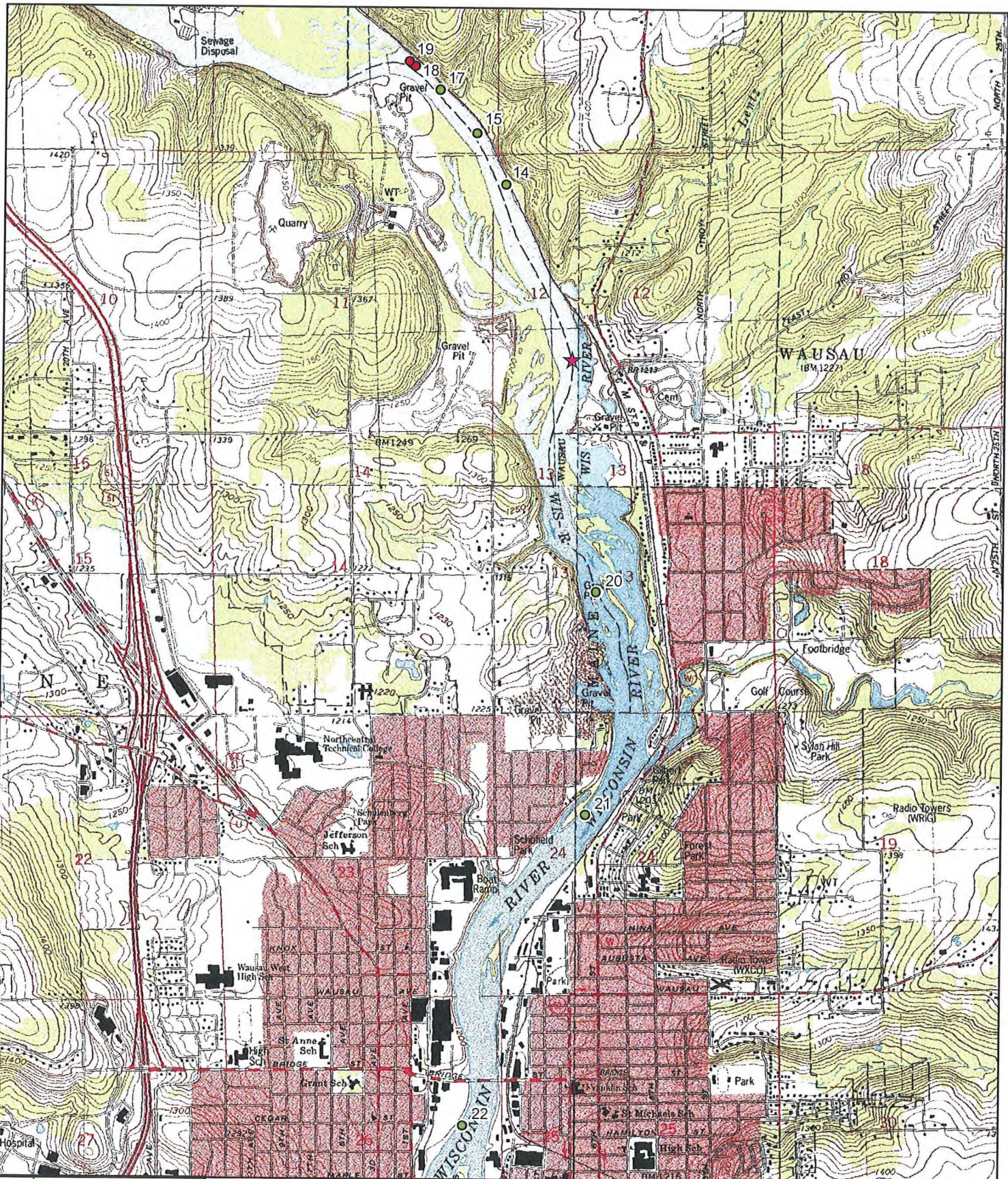
Purple Loosestrife Survey Form

Hydroelectric Project Jersey 2011
 Inspection Date 20-Jul-11

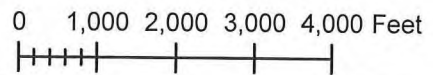
General Plant Vigor							
Colony Number	Colony Size S 0-5 M 6-50 L >50	Plant Height 4=>4ft 3=2-4ft 2=1-2 ft 1= <1 ft	Plant Flowering 4=100% of plants 3=51-99% of plants 2=26-50% of plants 1= <25% of plants	Beetle Feeding 4=0-25% feeding 3=26-50% feeding 2=51-75% feeding 1=76-100% feeding	Total Plant Vigor 10 12=good 7- 9=fair 4- 6=poor 0- 3=very poor	Notes	GPS Point
23			NO PLANTS NOTED				
24			NO PLANTS NOTED				
25			NO PLANTS NOTED				
26			NO PLANTS NOTED				
27			NO PLANTS NOTED				
28			NO PLANTS NOTED				
29			NO PLANTS NOTED				
30			NO PLANTS NOTED				
31			NO PLANTS NOTED				
32	M	4	3	3	9	feeding	178
33			NO PLANTS NOTED				

APPENDIX B

WAUSAU HYDROELECTRIC PROJECT
PURPLE LOOSESTRIFE SURVEY RESULTS



2011 Wausau Purple Loosestrife Survey



- ★ Beetle Release Site
- Purple Loosestrife**
- 0-5 Plants
- 6-50 Plants
- >50 Plants

10/10/11

Purple Loosestrife Survey Form

Hydroelectric Project

Wausau 2011

Inspection Date

20-Jul-11

General Plant Vigor							
Colony Number	Colony Size S 0-5 M 6-50 L >50	Plant Height 4=>4ft 3=2-4ft 2=1-2 ft 1= <1 ft	Plant Flowering 4=100% of plants 3=51-99% of plants 2=26-50% of plants 1= <25% of plants	Beetle Feeding 4=0-25% feeding 3=26-50% feeding 2=51-75% feeding 1=76-100% feeding	Total Plant Vigor 10-12=good 7-9=fair 4-6=poor 0-3=very poor	Notes	GPS Point
1			NO PLANTS NOTED				
2			NO PLANTS NOTED				
3			NO PLANTS NOTED				
4			NO PLANTS NOTED				
5			NO PLANTS NOTED				
6			NO PLANTS NOTED				
7			NO PLANTS NOTED				
8			NO PLANTS NOTED				
9			NO PLANTS NOTED				
10			NO PLANTS NOTED				
11			NO PLANTS NOTED				

Purple Loosestrife Survey Form

Hydroelectric Project

Wausau 2011

Inspection Date

20-Jul-11

General Plant Vigor							
Colony Number	Colony Size S 0-5 M 6-50 L >50	Plant Height 4=>4ft 3=2-4ft 2=1-2 ft 1= <1 ft	Plant Flowering 4=100% of plants 3=51-99% of plants 2=26-50% of plants 1= <25% of plants	Beetle Feeding 4=0-25% feeding 3=26-50% feeding 2=51-75% feeding 1=76-100% feeding	Total Plant Vigor 10 12=good 7- 9=fair 4- 6=poor 0- 3=very poor	Notes	GPS Point
12			NO PLANTS NOTED				
13			NO PLANTS NOTED				
14	S	4	4	4	12	no feeding	192
15	S	4	3	3	10	feeding	193
16			NO PLANTS NOTED				
17	S	4	3	3	10	feeding	194
18	L	4	2	2	8	feeding	195
19	L	4	2	2	8	feeding	196
20	S	3	4	4	11	no feeding	197
21	S	3	3	3	9	feeding	198
22	S	4	4	2	10	feeding	188

APPENDIX C
DOCUMENTATION OF CONSULTATION



Wisconsin Public Service Corporation

700 North Adams Street
P.O. Box 19001
Green Bay, WI 54307-9001

www.wisconsinpublicservice.com

October 18, 2011

Cheryl Laatsch
WDNR
101 South Webster Street OE/7
Madison, WI 53703

Nicholas Utrup
US Fish and Wildlife Service
2661 Tower Drive
New Franken, WI 54229

Dear Ms. Laatsch and Mr. Utrup:

RE: 2010 Noxious plants Monitoring Reports, Wausau and Jersey Hydroelectric Projects (FERC Project No. 1999 and FERC Project No. 2476)

Per the order a Amending Purple Loosestrife Monitoring Plan issued October 23, 2008, Wisconsin Public Service Corporation (WPS) is to provide annual updates on the *Galerucella sp.* beetles (beetles) release sites and purple loosestrife populations for a period of six years, beginning in 2009 to the Wisconsin Department of Natural Resources (WDNR) and the U.S. Fish and Wildlife Service (FWS) no later than October 31st of each year and to the Federal Energy Regulatory Commission (FERC) with agency comments no later than December 15 of each year.

Jersey Hydroelectric Project

In 2011, WPS released beetles that were reared on potted purple loosestrife plants. Approximately 2000 beetles were released on July 20, 2011.

A purple loosestrife survey was conducted at the Jersey Hydroelectric Project on July 20, 2011. The results of the survey indicated a total of sixteen (16) purple loosestrife colonies within the project boundary. Beetle feeding was noted at fifteen (15) colonies. Heavy feeding (colonies with 75% to 100% of plants with active beetle feeding) was noted at eight (8) of those colonies. For comparison purposes, 2010 survey results noted a total of thirty-five (35) purple loosestrife colonies. Beetle feeding was noted at twenty-eight (28) colonies with heavy feeding noted at thirteen (13) colonies.

The purple loosestrife figure and data sheet provide the location of the purple loosestrife, location of beetle feeding and the beetle release location. The figure and datasheet are located in Appendix A.

Wausau Hydroelectric Project

In 2011, WPS released beetles that were reared on potted purple loosestrife plants. Approximately 2000 beetles were released at the Wausau Hydroelectric Project on July 17, 2011.

WPS completed a purple loosestrife survey on July 20, 2011. The results of the survey indicated a total of eight (8) purple loosestrife colonies in the project boundary. Beetle feeding was noted at six

(6) colonies. For comparison, the 2010 survey noted a total of thirteen (13) colonies. Beetle feeding was noted at five (5) colonies.

The purple loosestrife survey figure and datasheet provide the location of the purple loosestrife, location of beetle feeding and beetle release locations. The figure and data sheet are located in Appendix B.

If you have any questions regarding this report, please contact Darrin Johnson at 715-345-7509.
Sincerely,

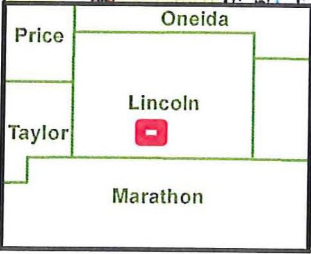
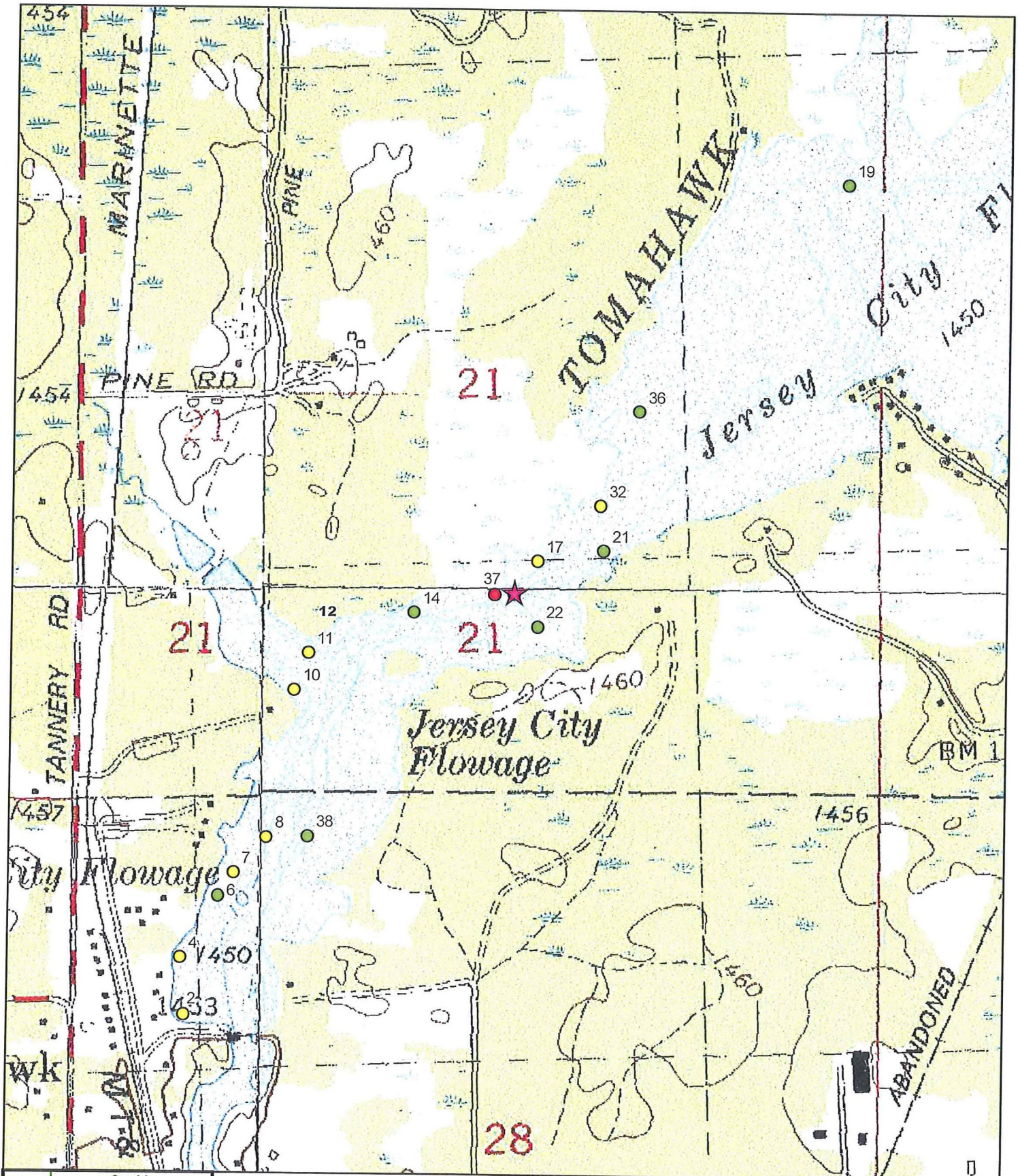
A handwritten signature in black ink, appearing to read "Darrin Johnson", with a long horizontal flourish extending to the right.

Darrin Johnson
Environmental Consultant-Shoreline Management

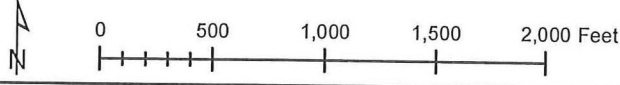
Enc.

APPENDIX A

JERSEY HYDROELECTRIC PROJECT
PURPLE LOOSESTRIFE SURVEY RESULTS



2011 Jersey Flowage Purple Loosestrife Survey



- ★ Beetle Release Site
- Purple Loosestrife**
- 0-5 Plants
- 6-50 Plants
- >50 Plants

10/10/11

Purple Loosestrife Survey Form

Hydroelectric Project

Jersey 2011

Inspection Date

20-Jul-11

Colony Number	Colony Size S 0-5 M 6-50 L >50	General Plant Vigor			Total Plant Vigor 10 12=good 7- 9=fair 4- 6=poor 0- 3=very poor	Notes	GPS Point
		Plant Height 4=>4ft 3=2-4ft 2=1-2 ft 1= <1 ft	Plant Flowering 4=100% of plants 3=51-99% of plants 2=26-50% of plants 1= <25% of plants	Beetle Feeding 4=0-25% feeding 3=26-50% feeding 2=51-75% feeding 1=76-100% feeding			
1			NO PLANTS NOTED				
2	M	3	2	1	6	heavy feeding	na
3			NO PLANTS NOTED				
4	M	3	2	1	6	heavy feeding	na
5			NO PLANTS NOTED				
6	S	3	3	2	8	feeding	184
7	M	3	4	2	9	feeding	183
8	M	3	3	2	8	feeding	182
9			NO PLANTS NOTED				
10	M	2	2	1	5	heavy feeding	na
11	M	2	2	1	5	heavy feeding	na

Purple Loosestrife Survey Form

Hydroelectric Project
Inspection Date

Jersey 2011

20-Jul-11

General Plant Vigor							
Colony Number	Colony Size S 0-5 M 6-50 L >50	Plant Height 4=>4ft 3=2-4ft 2=1-2 ft 1= <1 ft	Plant Flowering 4=100% of plants 3=51-99% of plants 2=26-50% of plants 1= <25% of plants	Beetle Feeding 4=0-25% feeding 3=26-50% feeding 2=51-75% feeding 1=76-100% feeding	Total Plant Vigor 10= 12=good 9=fair 6=poor 3=very poor	Notes	GPS Point
12			NO PLANTS NOTED				
13			NO PLANTS NOTED				
14	S	4	3	2	9	feeding	181
15			NO PLANTS NOTED				
16			NO PLANTS NOTED				
17	M	4	3	2	9	feeding	179
18			NO PLANTS NOTED				
19	S	4	4	4	12	no feeding	176
20			NO PLANTS NOTED				
21	S	3	2	1	6	heavy feeding	187
22	S	4	3	1	8	heavy feeding	186

Purple Loosestrife Survey Form

Hydroelectric Project
Inspection Date

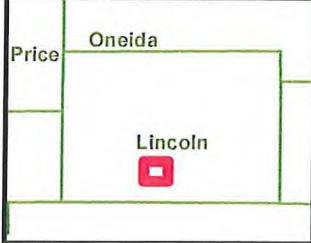
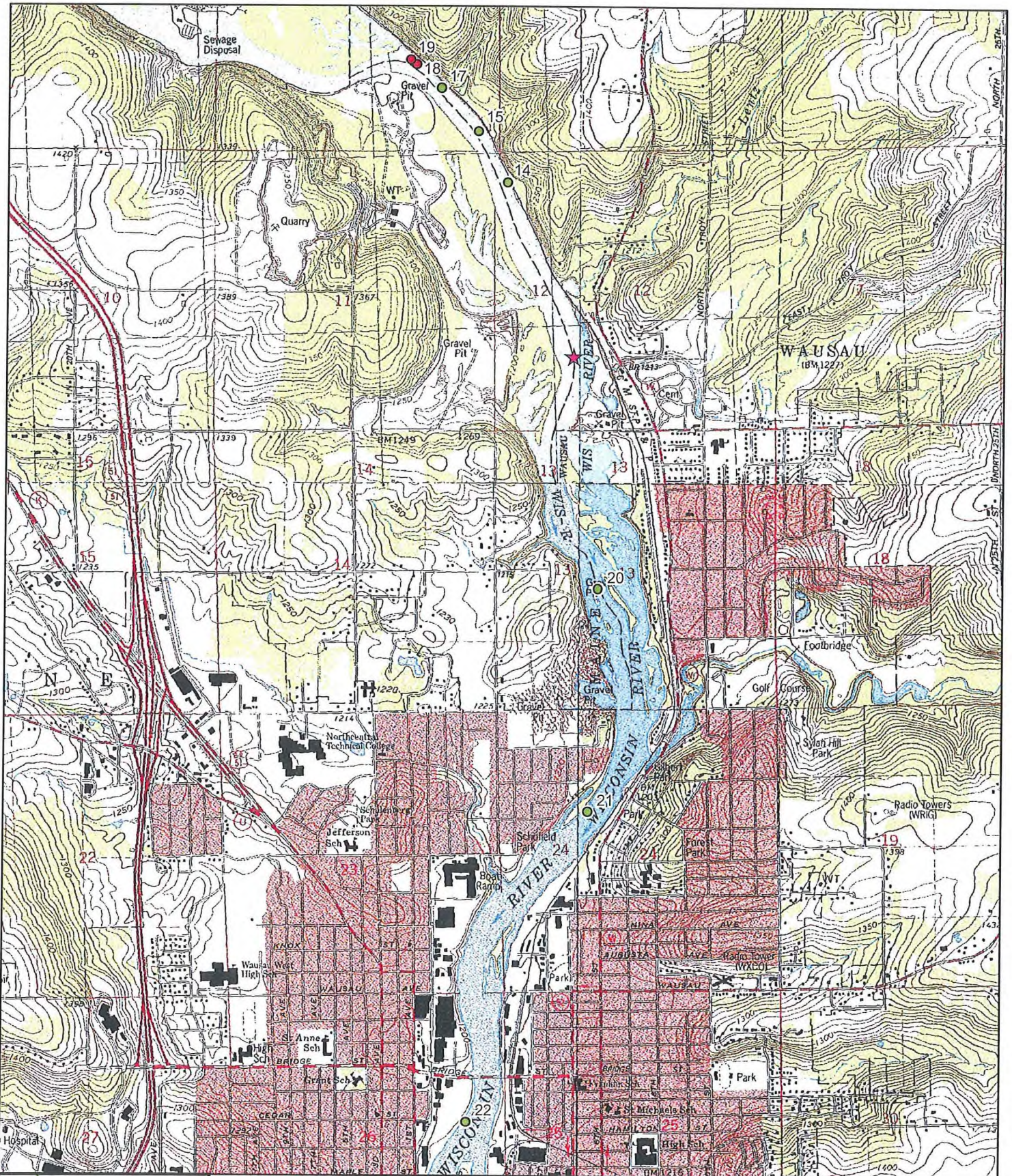
Jersey 2011

20-Jul-11

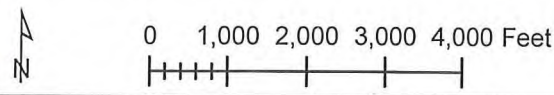
General Plant Vigor							
Colony Number	Colony Size S 0-5 M 6-50 L >50	Plant Height 4=>4ft 3=2-4ft 2=1-2 ft 1= <1 ft	Plant Flowering 4=100% of plants 3=51-99% of plants 2=26-50% of plants 1= <25% of plants	Beetle Feeding 4=0-25% feeding 3=26-50% feeding 2=51-75% feeding 1=76-100% feeding	Total Plant Vigor 10= 12=good 7- 9=fair 4- 6=poor 0- 3=very poor	Notes	GPS Point
23			NO PLANTS NOTED				
24			NO PLANTS NOTED				
25			NO PLANTS NOTED				
26			NO PLANTS NOTED				
27			NO PLANTS NOTED				
28			NO PLANTS NOTED				
29			NO PLANTS NOTED				
30			NO PLANTS NOTED				
31			NO PLANTS NOTED				
32	M	4	3	3	9	feeding	178
33			NO PLANTS NOTED				

APPENDIX B

WAUSAU HYDROELECTRIC PROJECT
PURPLE LOOSESTRIFE SURVEY RESULTS



2011 Wausau Purple Loosestrife Survey



- ★ Beetle Release Site
- Purple Loosestrife
 - 0-5 Plants
 - 6-50 Plants
 - >50 Plants

Purple Loosestrife Survey Form

Hydroelectric Project Wausau 2011
 Inspection Date 20-Jul-11

General Plant Vigor							
Colony Number	Colony Size S 0-5 M 6-50 L >50	Plant Height 4=>4ft 3=2-4ft 2=1-2 ft 1= <1 ft	Plant Flowering 4=100% of plants 3=51-99% of plants 2=26-50% of plants 1= <25% of plants	Beetle Feeding 4=0-25% feeding 3=26-50% feeding 2=51-75% feeding 1=76-100% feeding	Total Plant Vigor 10 12=good 7- 9=fair 4- 6=poor 0- 3=very poor	Notes	GPS Point
1			NO PLANTS NOTED				
2			NO PLANTS NOTED				
3			NO PLANTS NOTED				
4			NO PLANTS NOTED				
5			NO PLANTS NOTED				
6			NO PLANTS NOTED				
7			NO PLANTS NOTED				
8			NO PLANTS NOTED				
9			NO PLANTS NOTED				
10			NO PLANTS NOTED				
11			NO PLANTS NOTED				

Purple Loosestrife Survey Form

Hydroelectric Project

Wausau 2011

Inspection Date

20-Jul-11

General Plant Vigor							
Colony Number	Colony Size S 0-5 M 6-50 L >50	Plant Height 4=>4ft 3=2-4ft 2=1-2 ft 1= <1 ft	Plant Flowering 4=100% of plants 3=51-99% of plants 2=26-50% of plants 1= <25% of plants	Beetle Feeding 4=0-25% feeding 3=26-50% feeding 2=51-75% feeding 1=76-100% feeding	Total Plant Vigor 10 12=good 7- 9=fair 4- 6=poor 0- 3=very poor	Notes	GPS Point
12			NO PLANTS NOTED				
13			NO PLANTS NOTED				
14	S	4	4	4	12	no feeeding	192
15	S	4	3	3	10	feeding	193
16			NO PLANTS NOTED				
17	S	4	3	3	10	feeding	194
18	L	4	2	2	8	feeding	195
19	L	4	2	2	8	feeding	196
20	S	3	4	4	11	no feeeding	197
21	S	3	3	3	9	feeding	198
22	S	4	4	2	10	feeding	188

USFWS DID NOT SUBMIT ANY COMMENTS

WDNR DID NOT SUBMIT ANY COMMENTS

Document Content(s)

20111207 Wausau Jersey FERC Exotics Report.PDF.....1-2

20111207 Wausau Jersey Appendices.PDF.....3-27