



Wisconsin Public Service Corporation

700 North Adams Street  
P.O. Box 19001  
Green Bay, WI 54307-9001

[www.wisconsinpublicservice.com](http://www.wisconsinpublicservice.com)

December 11, 2014

FERC Project No. 2476

Ms. Kimberly D. Bose, Secretary  
The Federal Energy Regulatory Commission  
888 First St NE  
Washington, DC 20426

Dear Secretary Bose:

Jersey Hydroelectric Project (P-2476)  
2014 Noxious Plants Monitoring Report and Six Year Summary

Per the order Amending Purple Loosestrife Monitoring Plan issued October 23, 2008, Wisconsin Public Service Corporation (WPS) is to provide annual updates on the *Galerucella sp.* beetles (beetles) release sites and purple loosestrife populations for a period of six years. After six years control data has been collected (2009-2014), WPS is to file a summary of the data and its recommendation on the schedule for conducting and reporting future purple loosestrife surveys.

In 2014, WPS released beetles that were reared on potted purple loosestrife plants. Approximately 3000 beetles were released by WPS on July 11, 2014.

WPS conducted a purple loosestrife survey on July 11, 2014. The results of the survey indicated a total of twelve (12) purple loosestrife colonies located within the project boundary. Beetle feeding was noted at ten (10) of those colonies. Heavy feeding (colonies with 75 to 100 percent of plants with active beetle feeding) was noted at nine (9) of those colonies. The purple loosestrife figure and data sheet provides the location of the purple loosestrife, locations of beetle feeding and the beetle release locations. The figure and datasheet are located in Appendix A.

WPS created a spreadsheet to summarize the six years of purple loosestrife survey and beetle release data. The spreadsheet is located in Appendix B. A review of the data shows that the number of loosestrife colonies has decreased from a total of 28 colonies in 2009 to twelve (12) colonies in 2014. The number of medium sized colonies has decreased from a total of nine (9) to seven (7) over that time-frame. The number of large colonies has decreased from five (5) in 2009 to one (1) in 2014. Beetle feeding, in many cases heavy feeding, was noted on most colonies.

This review of the monitoring data shows that the introduction of beetles as a biocontrol measure at the Jersey Hydroelectric Project has been effective at reducing the overall number of purple loosestrife colonies and the size of those colonies. WPS proposes to decrease monitoring frequency at the reservoir to a period of once every three years. Since healthy beetle populations are present,

Ms. Kimberly D. Bose  
December 11, 2014  
Page 2 of 2

WPS proposes to also discontinue releasing beetles at the reservoir. If the survey conducted in three years shows that there is a decrease in purple loosestrife populations, WPS will continue monitoring every three years. If the survey does not show a decrease in purple loosestrife populations, WPS will resume conducting annual monitoring and beetle releases.

Documentation of submittal of the results to WDNR and FWS has been included in Appendix C.

If you have any questions regarding this report, please contact Darrin Johnson at (715) 345-7509.

Sincerely,

A handwritten signature in black ink, appearing to read "Gil Snyder", with a long horizontal flourish extending to the right.

Gil Snyder  
Manager - Regional Generation

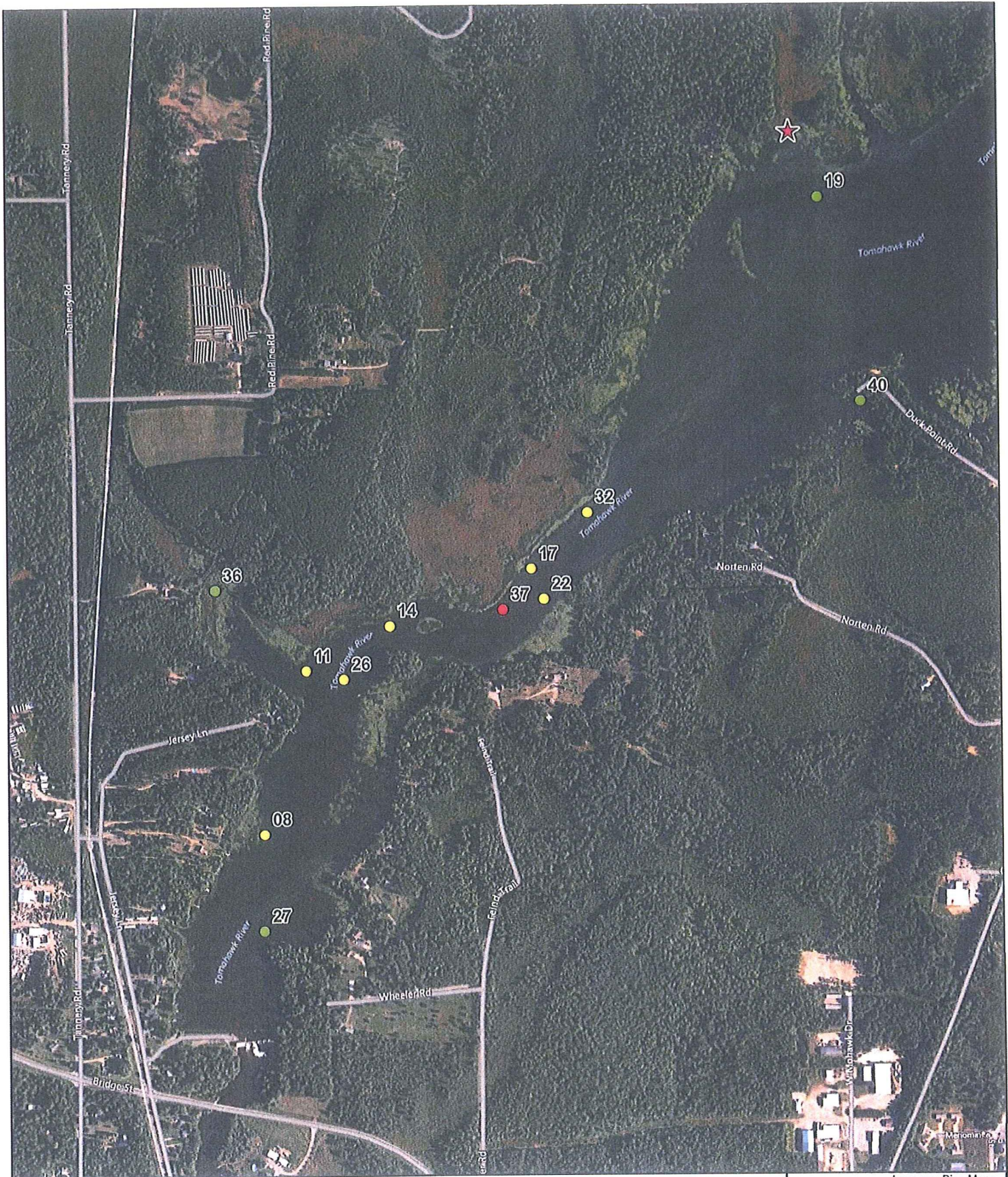
DMJ/rjf

Enclosed: Appendix A; Appendix B; Appendix C

cc:	Mr. Shawn Puzen, IBS - D2	Mr. Brad Menning, WPS - MERH
	Ms. Joan Johaneck, WPS - D2	Mr. John Zygaj, FERC - CRO
	Mr. William Bosacki, WPS - D2	Mr. Edward Brandt, WPS - CRI
	Mr. John Myers, IBS - D2	Ms. Pat Grant, FERC - CRO

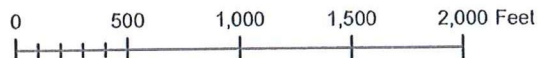
## APPENDIX A

### 2014 Jersey Flowage Purple Loosestrife Survey Results



Price	Oneida
	Lincoln
Taylor	Marathon

## 2014 Jersey Flowage Purple Loosestrife Survey



Date: 10/28/2014

- Imagery: Bing Maps
- ★ Beetle Release Site
  - Purple Loosestrife
  - 0-5 Plants
  - 6-50 Plants
  - >50 Plants

### Purple Loosestrife Survey Form

Hydroelectric Project

Jersey

Inspection Date

7/11/2014

Colony Number	Colony Size S 0-5 M 6-50 L >50	General Plant Vigor			Total Plant Vigor 10-12=good 7-9=fair 4-6=poor 0-3=very poor	Notes	GPS Point
		Plant Height 4=>4ft 3=2-4ft 2=1-2 ft 1= <1 ft	Plant Flowering 4=100% of plants 3=51-99% of plants 2=26-50% of plants 1= <25% of plants	Beetle Feeding 4=0-25% feeding 3=26-50% feeding 2=51-75% feeding 1=76-100% feeding			
1	No	Plants	Noted				
2	No	Plants	Noted				
3	No	Plants	Noted				
4	No	Plants	Noted				
5	No	Plants	Noted				
6	No	Plants	Noted				
7	No	Plants	Noted				
8	M	3	3	1	7		
9	M	Plants	Noted				
10	No	Plants	Noted				
11	M	4	3	1	8	11	

2014 - 12 colonies total

4 Small

7 Medium

1 Large

Feeding @ 10 colonies

Released 2000 beetles 7/11/2014

### Purple Loosestrife Survey Form

Hydroelectric Project

Jersey

Inspection Date

7/11/14

Colony Number	Colony Size S 0-5 M 6-50 L >50	General Plant Vigor			Total Plant Vigor 10-12=good 7-9=fair 4-6=poor 0-3=very poor	Notes	GPS Point
		Plant Height 4=>4ft 3=2-4ft 2=1-2 ft 1=<1 ft	Plant Flowering 4=100% of plants 3=51-99% of plants 2=26-50% of plants 1=<25% of plants	Beetle Feeding 4=0-25% feeding 3=26-50% feeding 2=51-75% feeding 1=76-100% feeding			
12	NO		Plants	Noted			
13	NO		Plants	Noted			
14	M	3	3	1	7		14
15	NO		Plants	Noted			
16		NO	Plants	Noted			
17	M	3	3	1	7		17
18		NO	Plants	Noted			
19	S	4	4	4	12	no feeding	19
20		NO	Plants	Noted			
21		NO	Plants	Noted			
22	M	4	3	1	8		22

### Purple Loosestrife Survey Form

Hydroelectric Project  
 Inspection Date

Jersey  
7/11/14

Colony Number	Colony Size S 0-5 M 6-50 L >50	General Plant Vigor			Total Plant Vigor 10-12=good 7-9=fair 4-6=poor 0-3=very poor	Notes	GPS Point
		Plant Height 4=>4ft 3=2-4ft 2=1-2 ft 1= <1 ft	Plant Flowering 4=100% of plants 3=51-99% of plants 2=26-50% of plants 1= <25% of plants	Beetle Feeding 4=0-25% feeding 3=26-50% feeding 2=51-75% feeding 1=76-100% feeding			
23	NO		Plants	Noted			
24		NO	Plants	Noted			
25		NO	Plants	Noted			
26	M	4	3	1	8		26
27	S	4	4	4	12	Beetle feeding	27
28		NO	Plants	Noted			
29		NO	Plants	Noted			
30		NO	Plants	Noted			
31		NO	Plants	Noted			
32	M	4	4	1	9		
33		NO	Plants	Noted			





## Appendix B

### Summary of Jersey Flowage Purple Loosestrife Surveys

2009-2014

Jersey Project

Year	Total Number of Colonies	Number of small colonies(0-5 plants)	Number of Medium Colonies (6-50 plants)	Number of Large Colonies (50+ plants)	Number of colonies with beetle feeding	Percentage of total colonies with beetle feeding	Beetles Released
2009	28	14	9	5	20	71%	1000
2010	35	18	10	5	28	80%	2000
2011	16	7	8	1	15	94%	2000
2012	21	12	7	2	19	90%	2000
2013	8	2	5	1	8	100%	3000
2014	12	4	7	1	10	83%	3000

<b>6 year average</b>	<b>20</b>	<b>9.5</b>	<b>7.7</b>	<b>2.5</b>	<b>16.7</b>	<b>86%</b>
-----------------------	-----------	------------	------------	------------	-------------	------------

## Appendix C

### Documentation of Consultation



Wisconsin Public Service Corporation

700 North Adams Street  
P.O. Box 19001  
Green Bay, WI 54307-9001

[www.wisconsinpublicservice.com](http://www.wisconsinpublicservice.com)

October 29, 2014

FERC Project No. 2476

Ms. Cheryl Laatsch  
WDNR-FERC Coordinator  
N7725 Hwy 28  
Horicon, WI 53032

Mr. Nick Utrup  
USFWS Ecological Services Field Office  
4101 American Blvd. East  
Bloomington, MN 55425

Dear Ms. Laatsch and Mr. Utrup:

**Jersey Hydroelectric Project (P-2476)**  
**2014 Noxious Plants Monitoring Report and Six Year Summary**

Per the order Amending Purple Loosestrife Monitoring Plan issued October 23, 2008, Wisconsin Public Service Corporation (WPS) is to provide annual updates on the *Galerucella sp.* beetles (beetles) release sites and purple loosestrife populations for a period of six years. After six years of control data have been collected (2009-2014), WPS is to file a summary of the data and its recommendation on the schedule for conducting and reporting future purple loosestrife surveys.

In 2014, WPS released beetles that were reared on potted purple loosestrife plants. Approximately 3000 beetles were released by WPS on July 11, 2014.

WPS conducted a purple loosestrife survey on July 11, 2014. The results of the survey indicated a total of twelve (12) purple loosestrife colonies located within the project boundary. Beetle feeding was noted at ten (10) of those colonies. Heavy feeding (colonies with 75% to 100% of plants with active beetle feeding) was noted at nine (9) of those colonies. The purple loosestrife figure and data sheet provides the location of the purple loosestrife, locations of beetle feeding and the beetle release locations. The figure and datasheet are located in Appendix A.

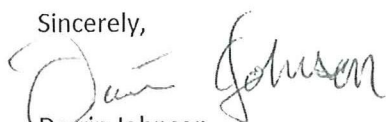
WPS created a spreadsheet to summarize the six years of purple loosestrife survey and beetle release data. The spreadsheet is located in Appendix B. A review of the data show that the number of loosestrife colonies has decreased from a total of 28 colonies in 2009 to twelve (12) colonies in 2014. The number of medium sized colonies has decreased from a total of nine (9) to seven (7) over that time-frame. The number of large colonies has decreased from five (5) in 2009 to one (1) in 2014. Beetle feeding, in many cases heavy feeding, was noted on most colonies.

This review of the monitoring data shows that the introduction of beetles as a biocontrol measure at the Jersey Hydroelectric Project has been effective at reducing the overall number of purple loosestrife colonies and the size of those colonies. WPS proposes to decrease monitoring frequency

at the reservoir to a period of once every three years. Since healthy beetle populations are present, WPS proposes to also discontinue releasing beetles at the reservoir.

If you have any questions or comments regarding this report, please provide them within 30 days to Darrin Johnson at (715) 345-7509.

Sincerely,

A handwritten signature in cursive script that reads "Darrin Johnson".

Darrin Johnson  
Environmental Consultant

DMJ

Enclosed: Appendix A, Appendix B

CC: Mr. Brad Menning, WPSC-MERH

Mr. William Bosacki, WPSC-D2

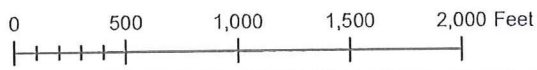
## APPENDIX A

### 2014 Jersey Flowage Purple Loosestrife Survey Results



Price	Oneida
Taylor	Lincoln
	Marathon

## 2014 Jersey Flowage Purple Loosestrife Survey



Date: 10/28/2014

- Imagery: Bing Maps
- ★ Beetle Release Site
  - Purple Loosestrife**
  - 0-5 Plants
  - 6-50 Plants
  - >50 Plants

### Purple Loosestrife Survey Form

Hydroelectric Project

Jersey

Inspection Date

7/11/2014

Colony Number	Colony Size S 0-5 M 6-50 L >50	General Plant Vigor			Total Plant Vigor 10-12=good 7-9=fair 4-6=poor 0-3=very poor	Notes	GPS Point
		Plant Height 4=>4ft 3=2-4ft 2=1-2 ft 1= <1 ft	Plant Flowering 4=100% of plants 3=51-99% of plants 2=26-50% of plants 1= <25% of plants	Beetle Feeding 4=0-25% feeding 3=26-50% feeding 2=51-75% feeding 1=76-100% feeding			
1	No	Plants	Noted				
2	No	Plants	Noted				
3	No	Plants	Noted				
4	No	Plants	Noted				
5	No	Plants	Noted				
6	No	Plants	Noted				
7	No	Plants	Noted				
8	M	3	3	1	7		
9	No	Plants	Noted				
10	No	Plants	Noted				
11	M	4	3	1	8	11	

2014 - 12 colonies total

4 small

7 medium

1 large

Feeding @ 10 colonies

Released 2000 beetles 7/11/2014



### Purple Loosestrife Survey Form

Hydroelectric Project  
Inspection Date

Versey

7/11/14

Colony Number	Colony Size S 0-5 M 6-50 L >50	General Plant Vigor			Total Plant Vigor 10-12=good 7-9=fair 4-6=poor 0-3=very poor	Notes	GPS Point
		Plant Height 4=>4ft 3=2-4ft 2=1-2 ft 1= <1 ft	Plant Flowering 4=100% of plants 3=51-99% of plants 2=26-50% of plants 1= <25% of plants	Beetle Feeding 4=0-25% feeding 3=26-50% feeding 2=51-75% feeding 1=76-100% feeding			
12	NO	Plants	Plants	Noted			
13	NO	Plants	Plants	Noted			
14	M	3	3	1	7		14
15	NO	Plants	Plants	Noted			
16		NO	Plants	Noted			
17	M	3	3	1	7		17
18		NO	Plants	Noted			
19	S	4	4	4	12	NO Feeding	19
20		NO	Plants	Noted			
21		NO	Plants	Noted			
22	M	4	3	1	8		22

### Purple Loosestrife Survey Form

Hydroelectric Project

Jersey

Inspection Date

7/11/14

Colony Number	Colony Size S 0-5 M 6-50 L >50	General Plant Vigor			Total Plant Vigor 10-12=good 7-9=fair 4-6=poor 0-3=very poor	Notes	GPS Point
		Plant Height 4=>4ft 3=2-4ft 2=1-2 ft 1=<1 ft	Plant Flowering 4=100% of plants 3=51-99% of plants 2=26-50% of plants 1=<25% of plants	Beetle Feeding 4=0-25% feeding 3=26-50% feeding 2=51-75% feeding 1=76-100% feeding			
23	NO		Plants	Noted			
24		NO	Plants	Noted			
25		NO	Plants	Noted			
26	M	4	3	1	8		26
27	S	4	4	4	12	Beetle feeding	27
28		NO	Plants	Noted			
29		NO	Plants	Noted			
30		NO	Plants	Noted			
31		NO	Plants	Noted			
32	M	4	4	1	9		
33		NO	Plants	Noted			



## Appendix B

### Summary of Jersey Flowage Purple Loosestrife Surveys

2009-2014

Jersey Project

Year	Total Number of Colonies	Number of small colonies(0-5 plants)	Number of Medium Colonies (6-50 plants)	Number of Large Colonies (50+ plants)	Number of colonies with beetle feeding	Percentage of total colonies with beetle feeding	Beetles Released
2009	28	14	9	5	20	71%	1000
2010	35	18	10	5	28	80%	2000
2011	16	7	8	1	15	94%	2000
2012	21	12	7	2	19	90%	2000
2013	8	2	5	1	8	100%	3000
2014	12	4	7	1	10	83%	3000

<i>6 year average</i>	20	9.5	7.7	2.5	16.7	86%
-----------------------	----	-----	-----	-----	------	-----

## WDNR Comments

## Johnson, Darrin M

---

**From:** Laatsch, Cheryl - DNR <Cheryl.Laatsch@wisconsin.gov>  
**Sent:** Wednesday, October 29, 2014 1:16 PM  
**To:** Johnson, Darrin M  
**Subject:** RE: Wausau Invasive Reports



Jodi L was very happy with the format of the report and the ease in understanding that was done, and why. Nice job.

**We are committed to service excellence.**

Visit our survey at <http://dnr.wi.gov/customersurvey> to evaluate how I did.

Cheryl Laatsch  
Phone: 920-387-7869  
[Cheryl.laatsch@wisconsin.gov](mailto:Cheryl.laatsch@wisconsin.gov)

---

**From:** Johnson, Darrin M [<mailto:DMJohnson@integrysgroup.com>]  
**Sent:** Wednesday, October 29, 2014 1:15 PM  
**To:** Laatsch, Cheryl - DNR  
**Subject:** RE: Wausau Invasive Reports

Thanks for your comments Cheryl.

**Darrin M. Johnson**  
Environmental Consultant | Environmental Services | Integrys Business Support, LLC

715-345-7509  
715-697-3130 *cell*  
715-345-7505 *fax*  
[dmjohnson@integrysgroup.com](mailto:dmjohnson@integrysgroup.com)

[www.integrysgroup.com](http://www.integrysgroup.com)

Providing support for Integrys Energy Group, Integrys Energy Services, Integrys Transportation Fuels, Michigan Gas Utilities, Minnesota Energy Resources, North Shore Gas, Peoples Gas, Upper Peninsula Power Company, Wisconsin River Power Company, and Wisconsin Public Service.

---

**From:** Laatsch, Cheryl - DNR [<mailto:Cheryl.Laatsch@wisconsin.gov>]  
**Sent:** Wednesday, October 29, 2014 1:14 PM  
**To:** Johnson, Darrin M  
**Subject:** Wausau Invasive Reports

We recommend: If there is not a decrease or if there is an increase at their next survey in three years, then they should resume their current beetle release and monitoring schedule.

**We are committed to service excellence.**

Visit our survey at <http://dnr.wi.gov/customersurvey> to evaluate how I did.

Cheryl Laatsch  
Phone: 920-387-7869  
[Cheryl.laatsch@wisconsin.gov](mailto:Cheryl.laatsch@wisconsin.gov)

## WPS Response to WDNR comments

**Comment 1:** We recommend: If there is not a decrease or if there is an increase at their next survey in three years, then they should resume their current beetle release and monitoring schedule.

**WPS Response:** WPS will resume the current annual beetle release and monitoring schedule if there is not a decrease or if there is an increase at their next survey in three years.

**Comment 2:** Jodi L was very happy with the format of the report and the ease in understanding that was done, and why. Nice job.

**WPS Response:** Comment Noted.



No comments were received from FWS

Document Content(s)

20141211 Jersey FERC Letter.PDF.....1-2

20141211 Jersey Invasive Report Appendices.PDF.....3-25