

Final

2011 LAND & WILDLIFE MANAGEMENT REPORT (Per FERC License Article 404)

**Per USDA Forest Service 4(e) Condition 10
Per WDNR Revised 401 Water Quality Certification Item Letter P, Q, R**

**Winter Hydroelectric Project
FERC Project #2064
Flambeau Hydro, LLC**

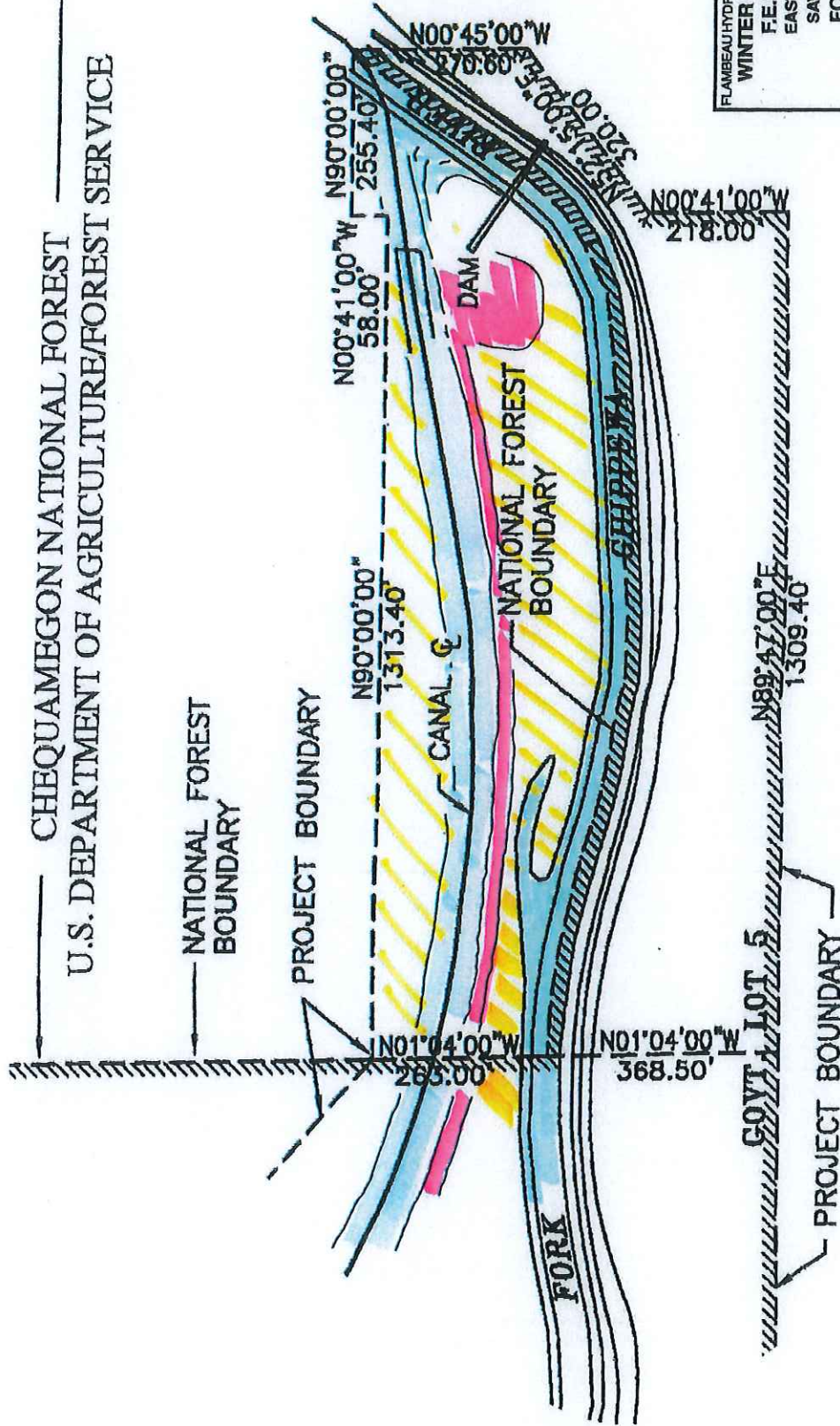
East Fork of the Chippewa River, Sawyer County, Wisconsin

Respectfully Submitted by:

**North American Hydro Holdings
116 North State Street
Neshkoro, Wisconsin 54960**

Final – February 24, 2012

CHEQUAMEGON NATIONAL FOREST
 U.S. DEPARTMENT OF AGRICULTURE/FORREST SERVICE

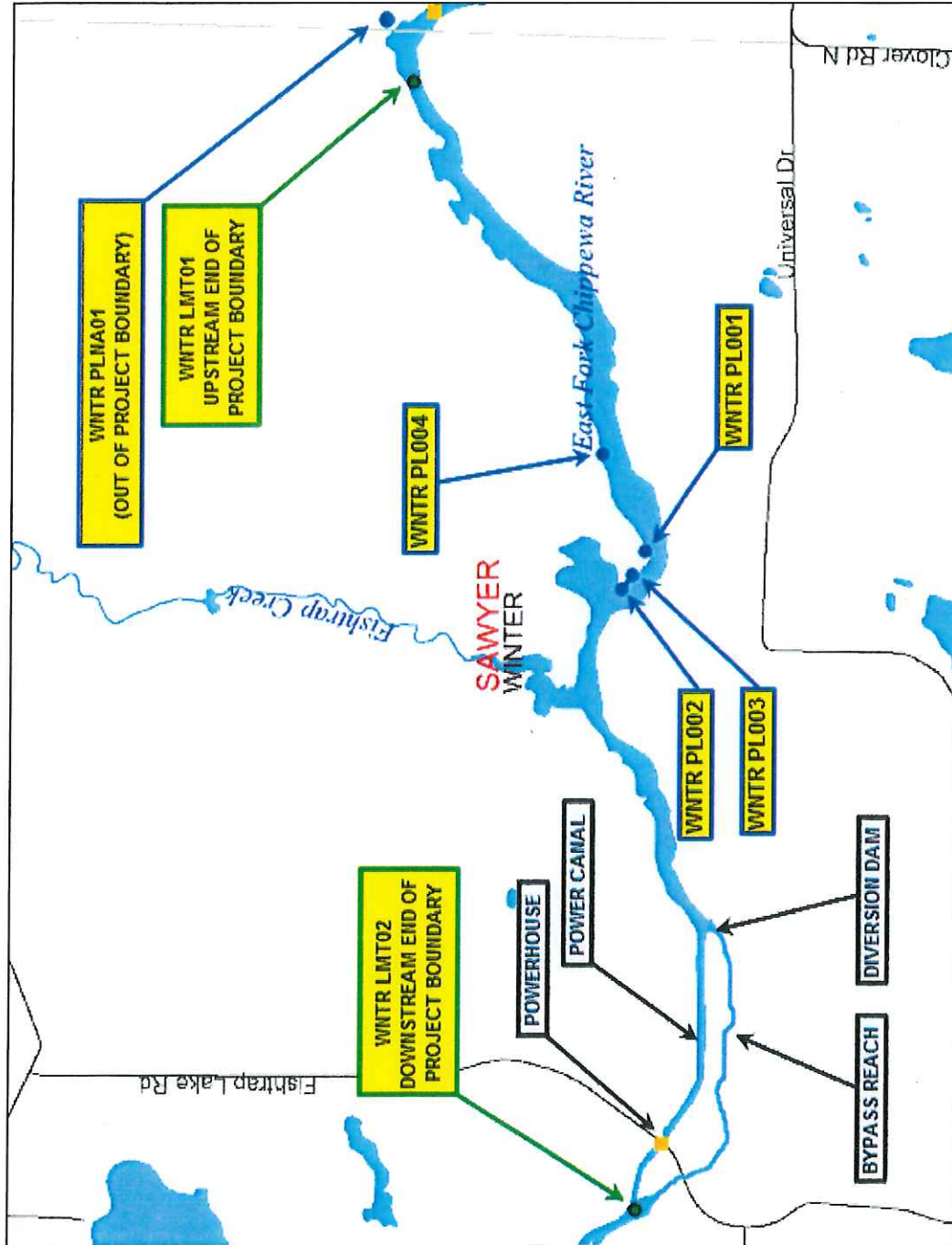


-  POWER CANAL EMBANKMENT AND TOE AREA
-  POWER CANAL/EAST FORK RIVER
-  DIVERSION DAM ACCESS ROAD

FLAMBEAU HYDRO LLC SAWYER COUNTY, WISCONSIN
WINTER HYDROELECTRIC PROJECT
 F.E.R.C. PROJECT NO. 2064
 EAST FORK OF CHIPPEWA RIVER
 SAWYER COUNTY, WISCONSIN
 FOREST SERVICE LANDS
 AT
THE WINTER PROJECT

WINTER PROJECT, PURPLE LOOSESTRIFE LOCATION MAP 2011

Winter WI, FERC #2064



Legend

- Dams
- Major Highways
- Interstate
- State Highway
- U.S. Highway
- County Roads
- Local Roads
- 24K County Boundaries
- Civil Towns
- Civil Town
- 24K Open Water
- 24K Rivers and Shorelines
- Intermittent
- Fluctuating
- Perennial
- Cities and Villages
- Village
- City

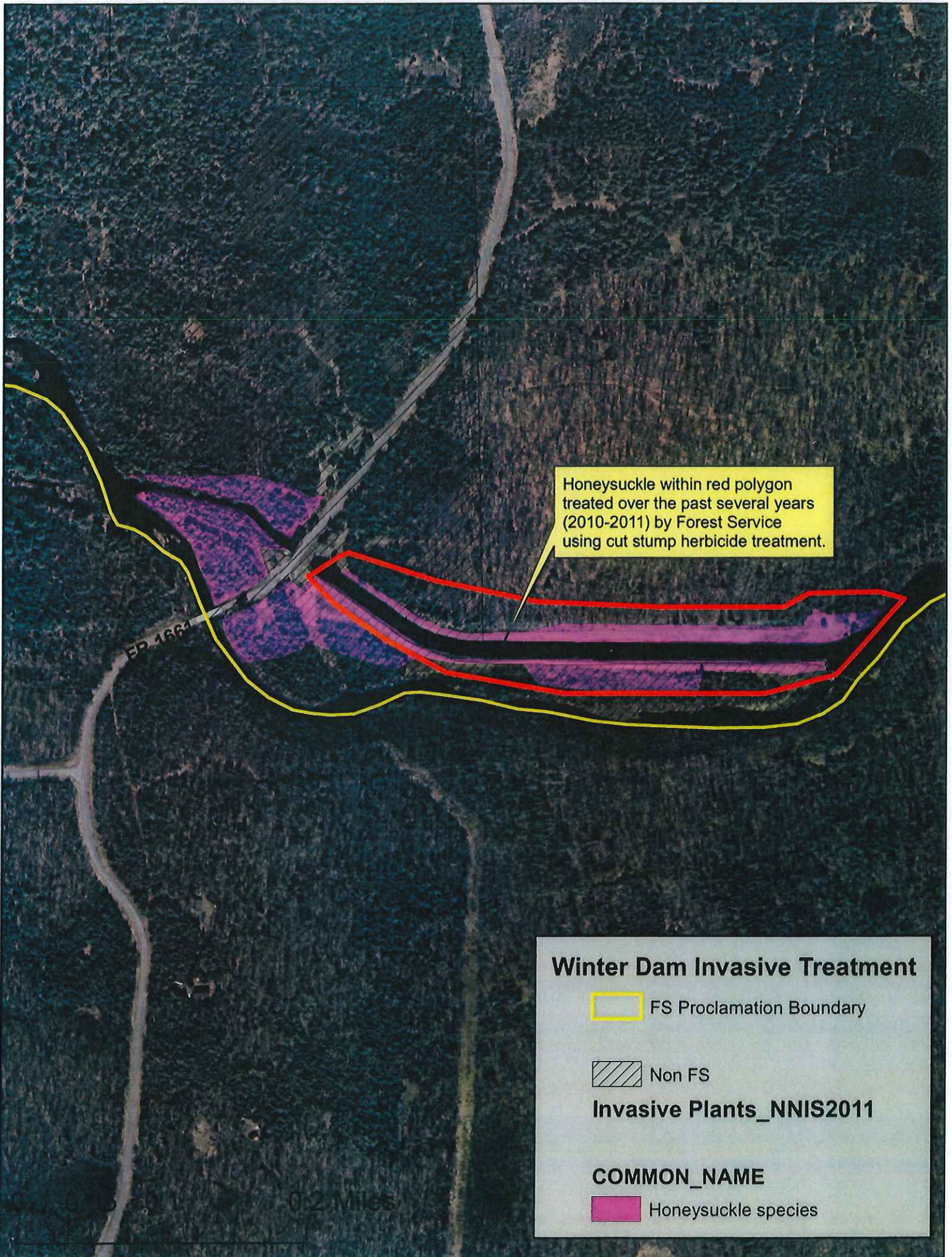
Purple Loosestrife Observed in 2011

Purple Loosestrife Observed in Previous Years and not in 2011

Scale: 1:18,999

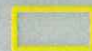



This map is a user generated static output from an Internet mapping site and is for general reference only. Data layers that appear on this map may or may not be accurate, current, or otherwise reliable. THIS MAP IS NOT TO BE USED FOR NAVIGATION.



Honeysuckle within red polygon treated over the past several years (2010-2011) by Forest Service using cut stump herbicide treatment.

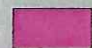
Winter Dam Invasive Treatment

 FS Proclamation Boundary

 Non FS

Invasive Plants_NNIS2011

COMMON_NAME

 Honeysuckle species