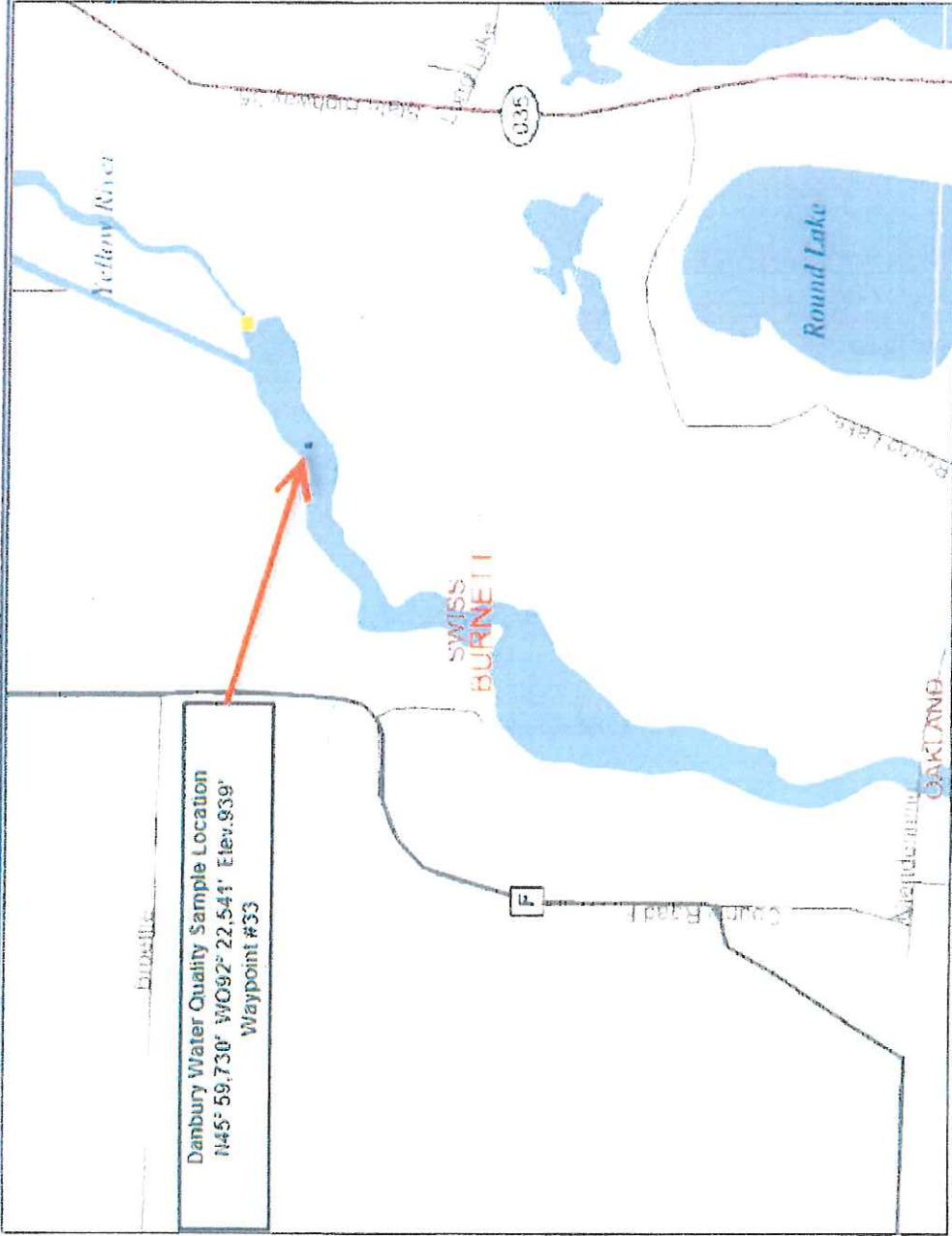


**Danbury Hydroelectric Project  
Water Quality Sampling Location  
FERC Project #9184**

Danbury Water Quality Sample Location  
N45° 59.730' W092° 22.541' Elev. 939'  
Waypoint #33



**Legend**

- County
- Major Highways
- Interstate
- State Highway
- U.S. Highways
- County Roads
- Local Roads
- 24K County Boundaries
- Civil Towns
- Civil Town
- 24K Open Water
- 24K Rivers and Streamlines
- Cities and Villages
- village
- City

Scale: 1:14,043

0 1400 2800 4200 ft.

This map is user generated static output from an internet mapping site and is for general reference only. Data layers that appear on this map may or may not be accurate, current, or otherwise reliable. THIS MAP IS NOT TO BE USED FOR NAVIGATION.