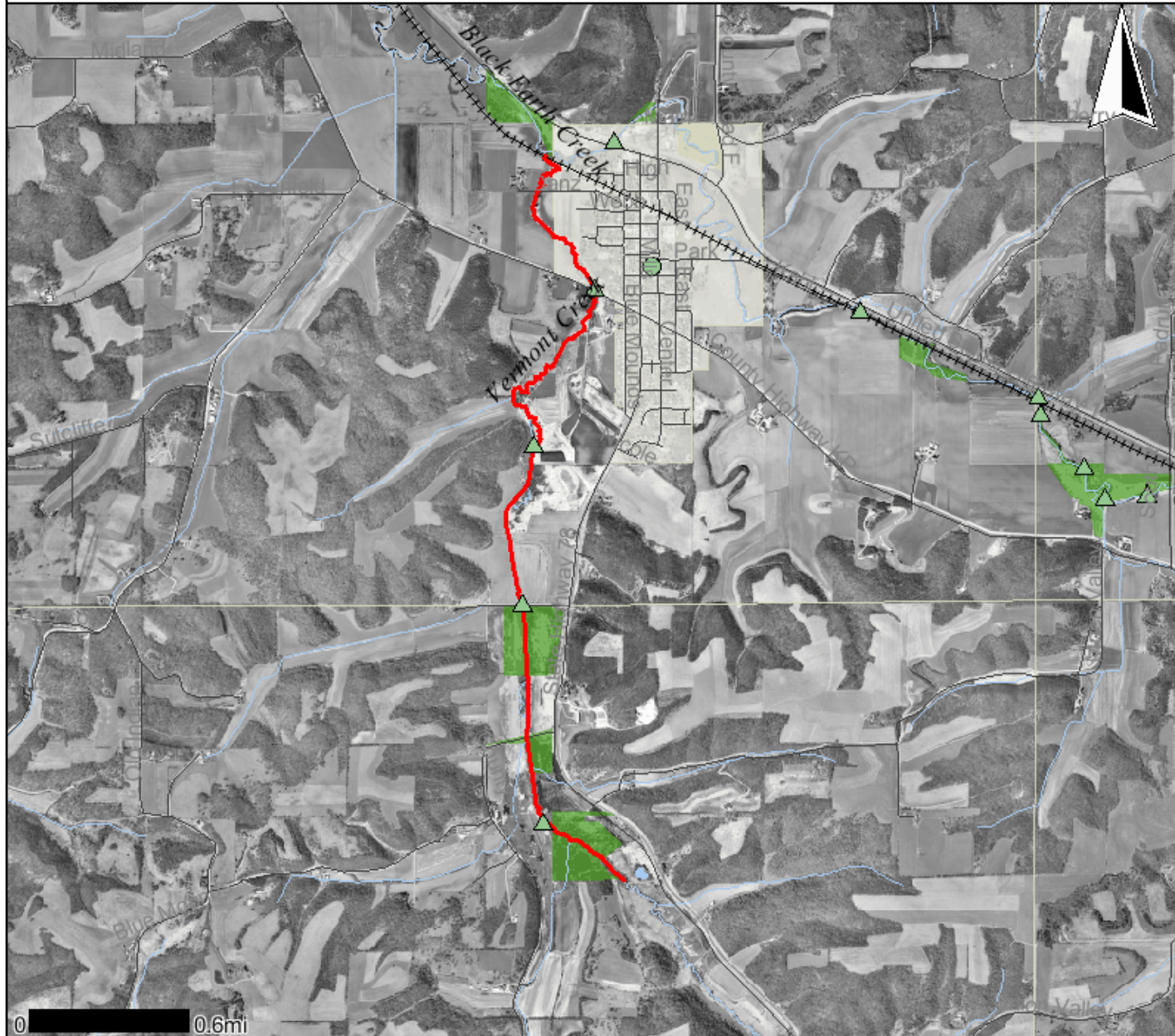


vermont creek 303d site

Legend



- Monitoring Station Points**
 - ▲ Active
 - FHDB Pending
 - Inactive Pending
 - Inactive Obsolete
 - ★ New Pending
- Monitoring Station Lines**
 - Active
 - Inactive Obsolete
 - New Pending
 - Not defined
- Monitoring Station Areas**
 - Active
 - Inactive Obsolete
 - New Pending
 - Not defined
- Impaired Waters Lines**
 - 303d Flagged AU
- Impaired Waters Areas**
 - 303d Flagged AU
- Impaired Waters Category Lines**
 - Contaminated Sediment Dominated
 - Atmospheric Deposition Dominated
 - Physical or Habitat Dominated
 - Nonpoint Source Dominated
 - Point and Nonpoint Source Blend
 - Other or Multiple Factors
- Impaired Waters Category Areas**
 - Contaminated Sediment Dominated
 - Atmospheric Deposition Dominated
 - Physical or Habitat Dominated
 - Nonpoint Source Dominated
 - Point and Nonpoint Source Blend
 - Other or Multiple Factors
- 24K County Boundaries**
 -
- Railroads**
 -
- Local Roads**
 -
- Civil Towns**
 -
- Civil Town**
 -
- 24K Open Water**
 -
- 24K Rivers and Shorelines**
 -
- Cities and Villages**
 -
- Village**
 -
- City**
 -
- DNR Managed Lands**
 - Fee
 - National Forest Boundaries

Scale: 1:36,780

DO NOT USE FOR NAVIGATION

0 0.6mi