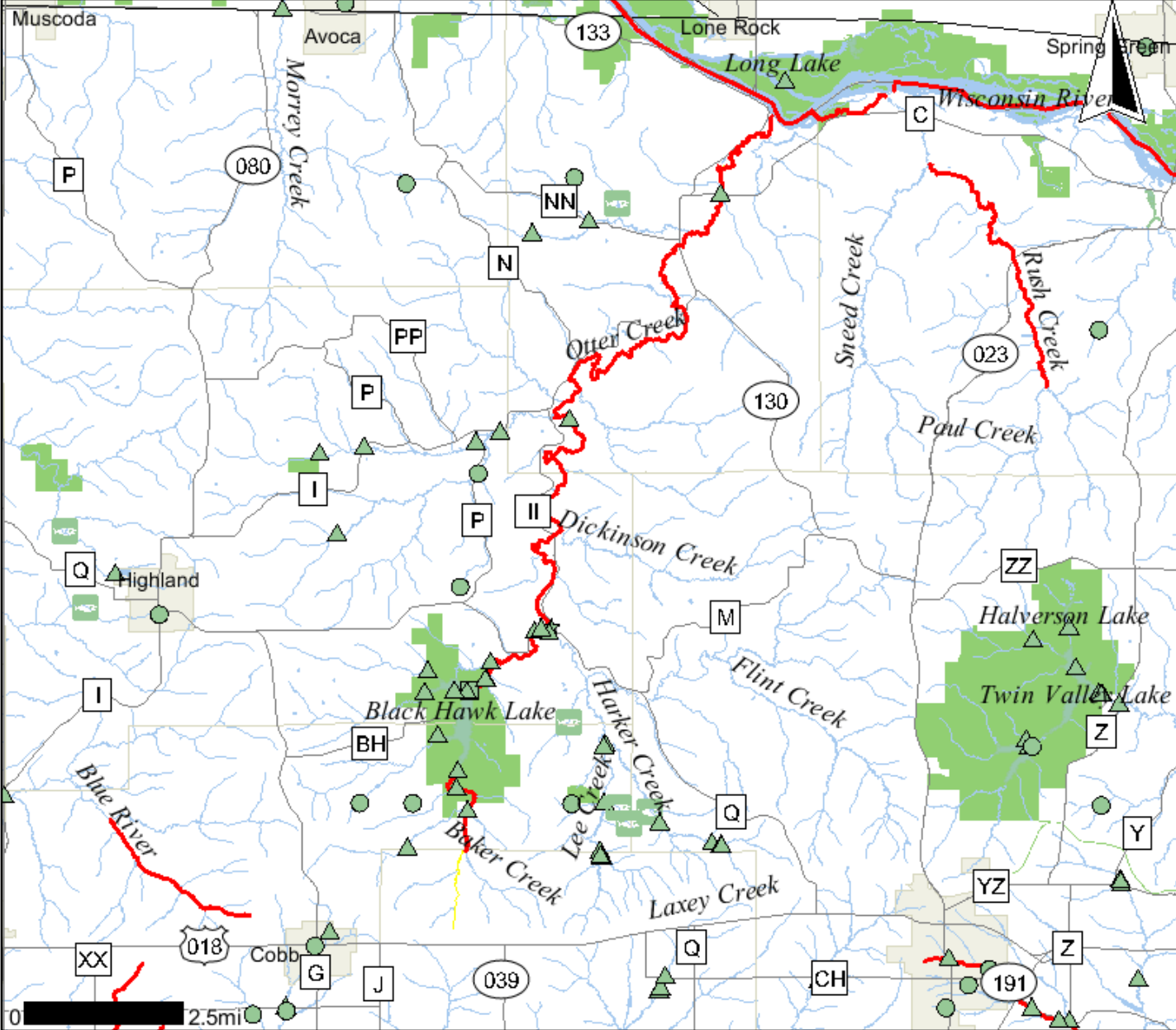


Otter Creek 303d Site (1237100)

Legend



- Monitoring Station Points**
 - Active
 - FHDB Pending
 - Inactive Pending
 - Inactive Obsolete
 - New Pending
- Monitoring Station Lines**
 - Active
 - Inactive Obsolete
 - New Pending
 - Not defined
- Monitoring Station Areas**
 - Active
 - Inactive Obsolete
 - New Pending
 - Not defined
- Impaired Waters Lines**
 - 303d Flagged AU
- Impaired Waters Areas**
 - 303d Flagged AU
- Impaired Waters Category Lines**
 - Contaminated Sediment Dominated
 - Atmospheric Deposition Dominated
 - Physical or Habitat Dominated
 - Nonpoint Source Dominated
 - Point and Nonpoint Source Blend
 - Other or Multiple Factors
- Impaired Waters Category Areas**
 - Contaminated Sediment Dominated
 - Atmospheric Deposition Dominated
 - Physical or Habitat Dominated
 - Nonpoint Source Dominated
 - Point and Nonpoint Source Blend
 - Other or Multiple Factors
- 24K County Boundaries**
- Railroads**
- Major Highways**
 - Interstate
 - State Highway
 - U.S. Highways
 - County Roads
- Civil Towns**
- Civil Town**
- 24K Open Water**
- 24K Rivers and Shorelines**
- Cities and Villages**
 - Village
 - City
- DNR Managed Lands**

Scale: 1:160,213

DO NOT USE FOR NAVIGATION