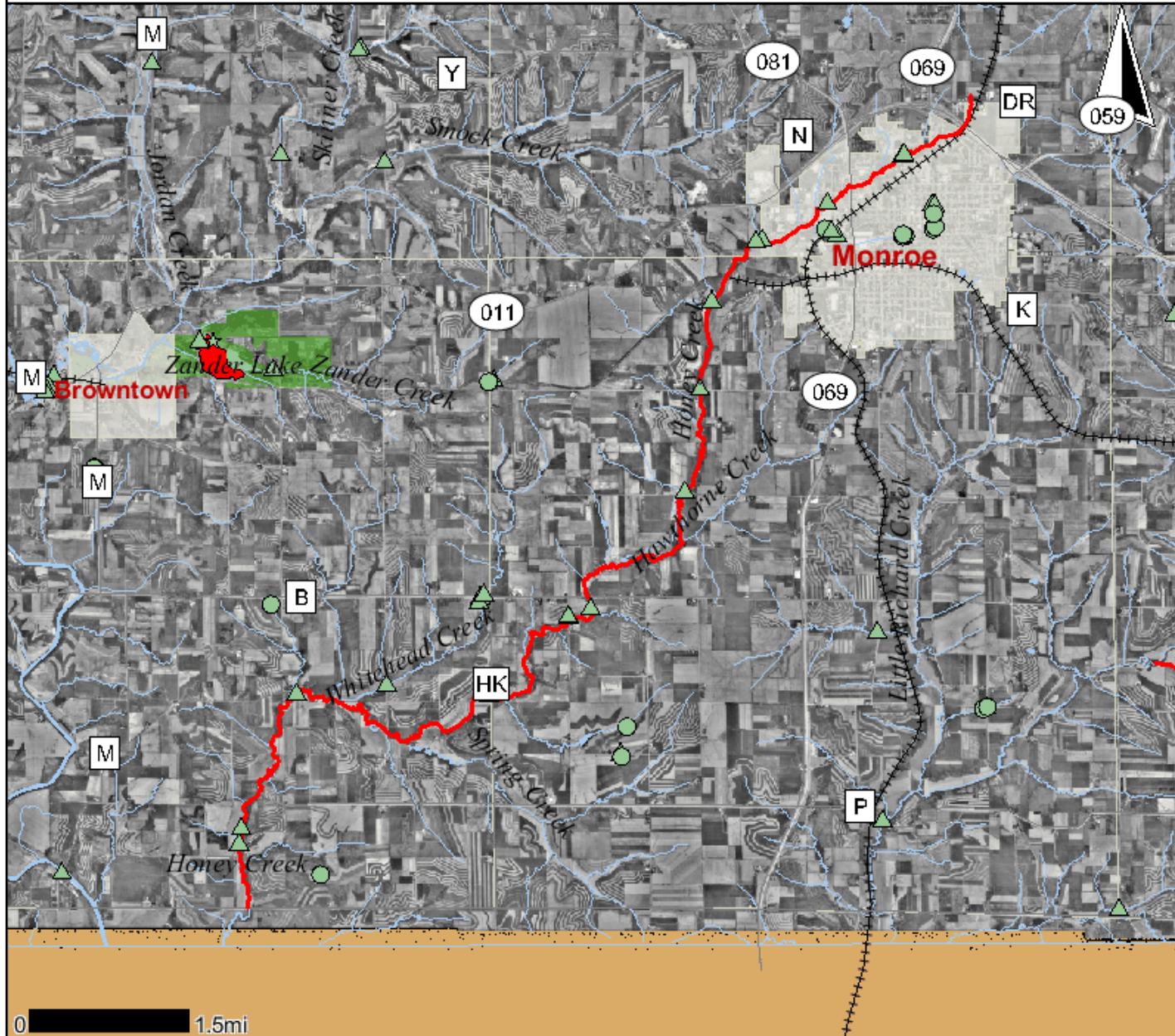


Honey Creek 303d Site Near Monroe

Legend



- Monitoring Station Points**
 - ▲ Active
 - ◐ FHDB Pending
 - ◑ Inactive Pending
 - ◒ Inactive Obsolete
 - ★ New Pending
- Monitoring Station Lines**
 - Active
 - - - Inactive Obsolete
 - ⋯ New Pending
 - ⋯ Not defined
- Monitoring Station Areas**
 - Active
 - ▨ Inactive Obsolete
 - ▩ New Pending
 - Not defined
- Impaired Waters Lines**
 - 303d Flagged AU
- Impaired Waters Areas**
 - 303d Flagged AU
- Impaired Waters Category Lines**
 - Contaminated Sediment Dominated
 - Atmospheric Deposition Dominated
 - Physical or Habitat Dominated
 - Nonpoint Source Dominated
 - Point and Nonpoint Source Blend
 - Other or Multiple Factors
- Impaired Waters Category Areas**
 - Contaminated Sediment Dominated
 - Atmospheric Deposition Dominated
 - Physical or Habitat Dominated
 - Nonpoint Source Dominated
 - Point and Nonpoint Source Blend
 - Other or Multiple Factors
- 24K County Boundaries**
 - 24K County Boundaries
- Railroads**
 - Railroads
- Major Highways**
 - Interstate
 - State Highway
 - U.S. Highways
 - County Roads
- Civil Towns**
 - Civil Town
 - 24K Open Water
 - 24K Rivers and Shorelines
- Cities and Villages**
 - Village
 - City
- DNR Managed Lands**
 - DNR Managed Lands

Scale: 1:97,424

DO NOT USE FOR NAVIGATION